



# Unie會館

Green Island  
Top  
Clubhouse  
Design

以「島嶼度假精神」為核心，重新界定民宿會館的定位，從傳統住宿機能，提升為具備完整體驗的會館空間。

透過動線設計的層次與材質的整合，讓使用者在進入空間的過程中，如同逐步轉換生活節奏，由外部環境過渡至相對安定、放鬆的室內空間，建立明確的空間感受。

With the "island vacation spirit" at its core, the positioning of guesthouses and resorts is redefined, elevating them from traditional accommodation functions to a resort space offering a complete experience.

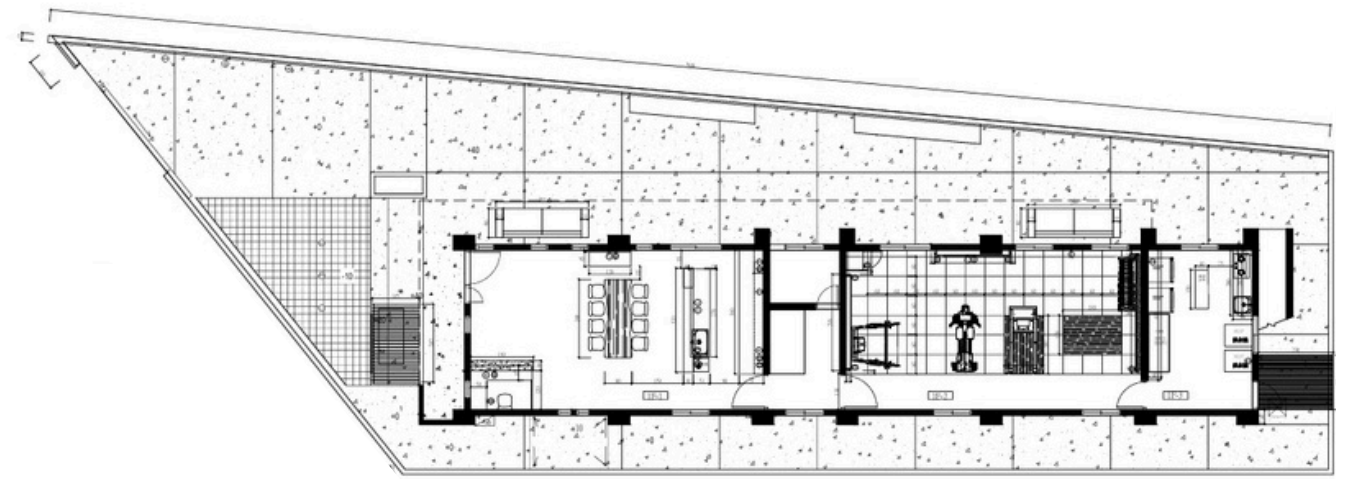
Through the layering of circulation design and the integration of materials, users gradually shift their pace of life as they enter the space, transitioning from the external environment to a relatively stable and relaxing indoor space, establishing a clear spatial experience.



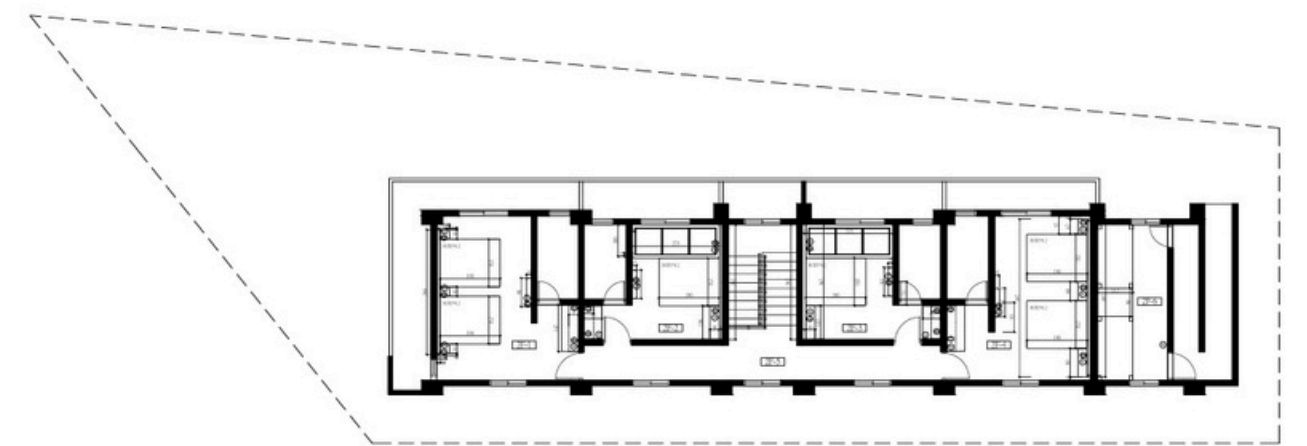
綠島受東北季風、鹽分與高濕度影響期長，一般材料難以長期承受，因此本案在設計之初，即確立「耐候策略」為核心方向。

戶外用材：枕木、日本檜木、塑化木

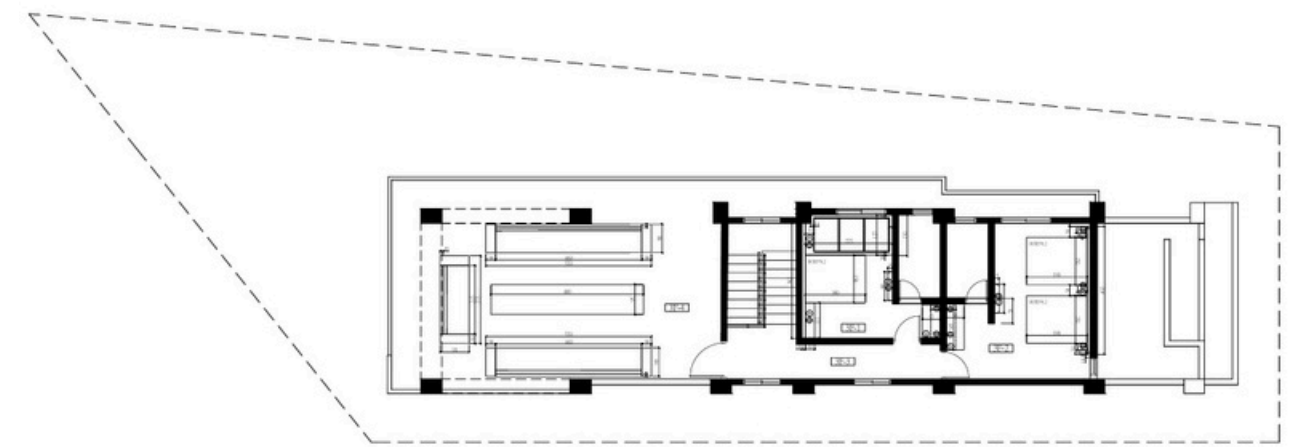
Green Island is affected by the northeast monsoon, salinity and high humidity all year round, which is difficult for ordinary materials to withstand for a long time. Therefore, from the beginning of the design, the "weather resistance strategy" was established as the core direction.



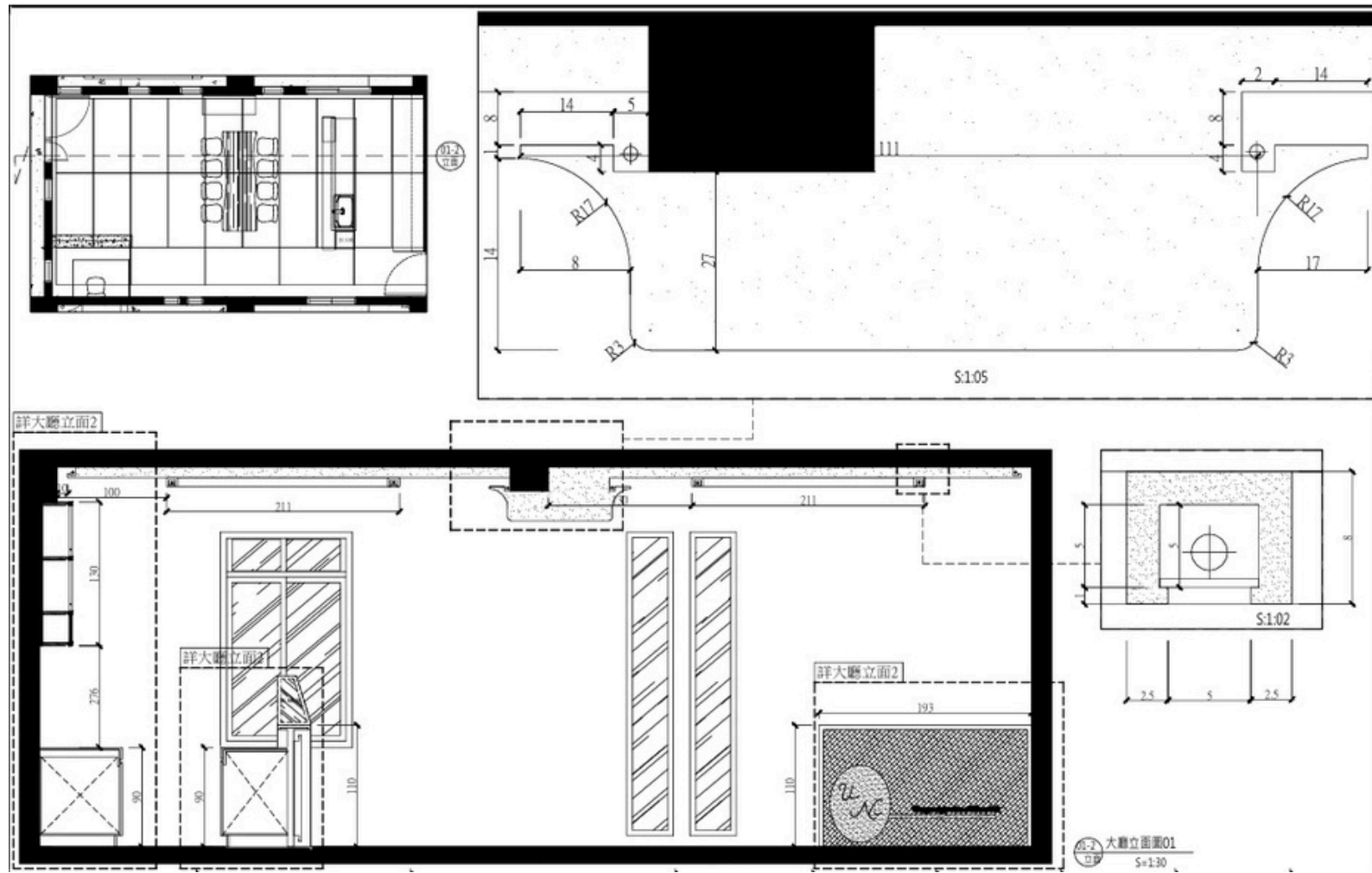
First floor plan



Second floor plan



Third floor plan



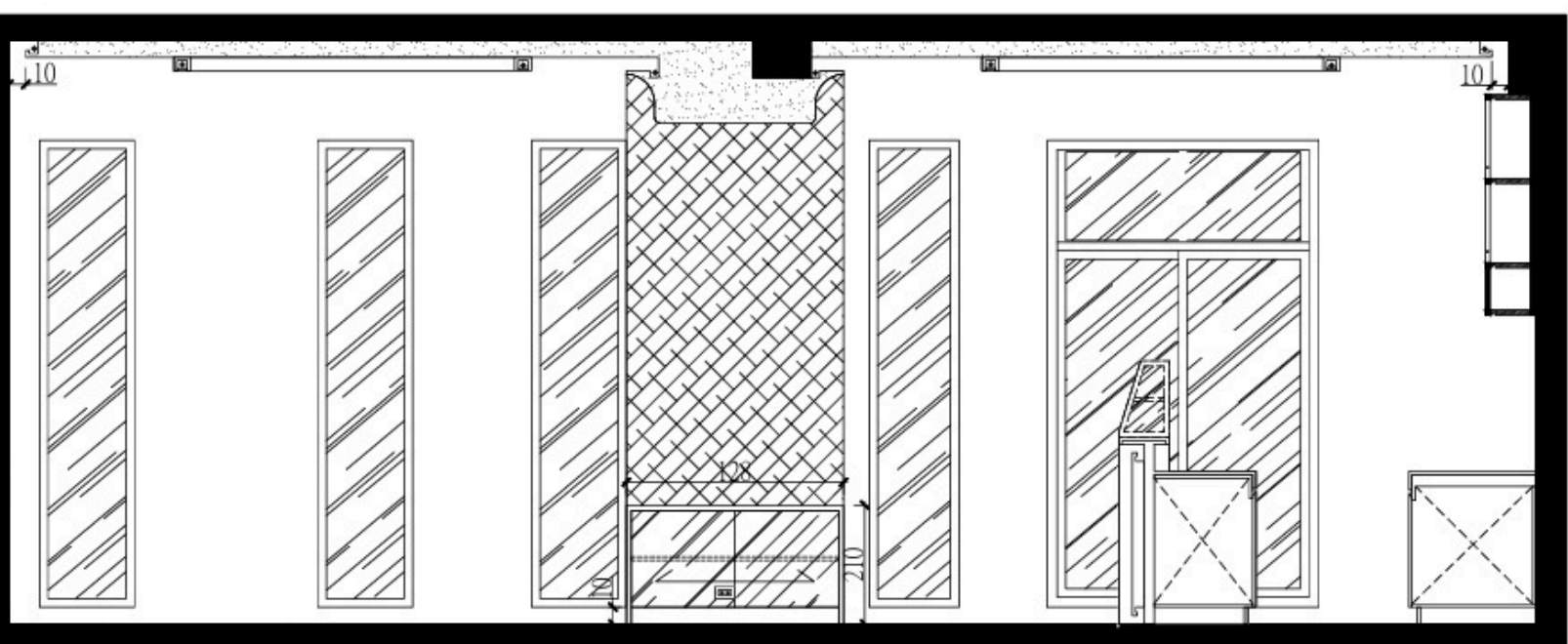
透過「曲面與圓形木作整合結構體」，將原本的結構樑體，轉化為具有流動性的包覆造型，達到結構隱藏與強化空間的層次效果。

By integrating curved and circular wooden structures, the original structural beams are transformed into a fluid, enveloping form, achieving the effect of concealing the structure and enhancing the spatial hierarchy.



透過左右兩側清玻璃的配置，大幅提升室內自然光照率，改善原先可能偏暗的入口空間，並減少白天對人工照明的依賴。

The use of clear glass on both sides significantly increases the penetration rate of natural light in the room, improving the previously dark entrance space and reducing the reliance on artificial lighting during the day.



本案籌建之初，恰逢綠島岸邊出現大翅鯨的蹤跡。對屋主而言不只是巧合，而更像是一種回應——一種豐收與幸運的自然訊號，所以將大翅鯨融入空間設計，並將鯨魚頭部朝向櫃台，呼應風水中「引氣入場」的概念，寓意財氣匯聚。同時以LED防水條燈勾勒建築輪廓，讓會館在夜晚如燈塔般醒目可見。

At the outset of this project, humpback whales were spotted along the shore of Green Island. For the homeowner, this was more than just a coincidence; it felt like a response—a natural signal of abundance and good fortune, and a harbinger of the business and life to come. Therefore, the humpback whale was incorporated into the spatial design, with its head facing the counter, echoing the feng shui concept of "drawing qi into the space," symbolizing the gathering of wealth. Meanwhile, LED waterproof strip lights outline the building's shape, making the clubhouse as eye-catching as a lighthouse at night.



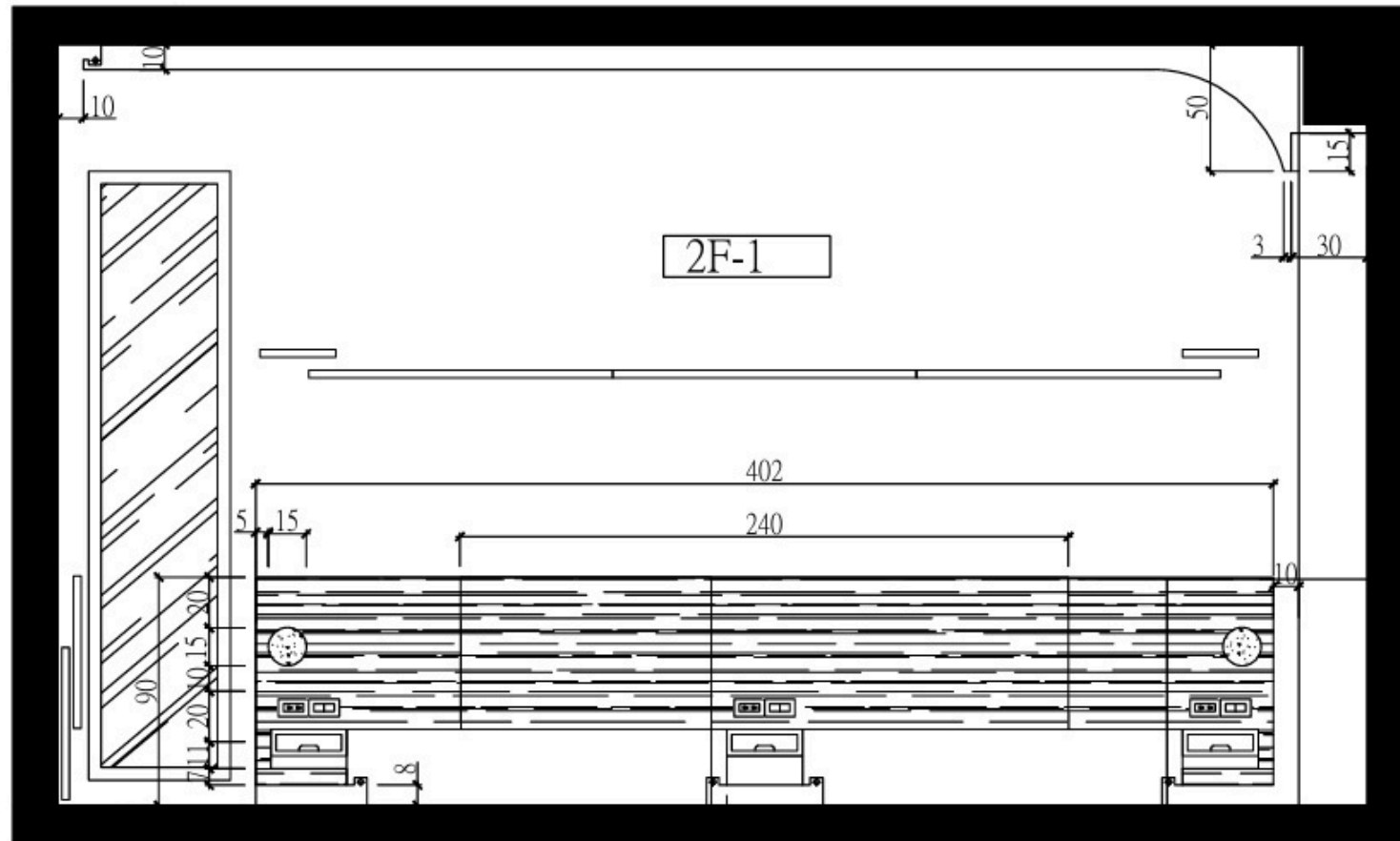


刻意設計兩種天花板語言，作為房型辨識的核心。

一者靠近落地窗處轉化為弧形天花，讓光線順著曲面延展，回應自然採光的方向，寓意將海浪拍岸的美麗畫面帶入室內。

Two distinct ceiling designs were intentionally chosen to define the room's layout.

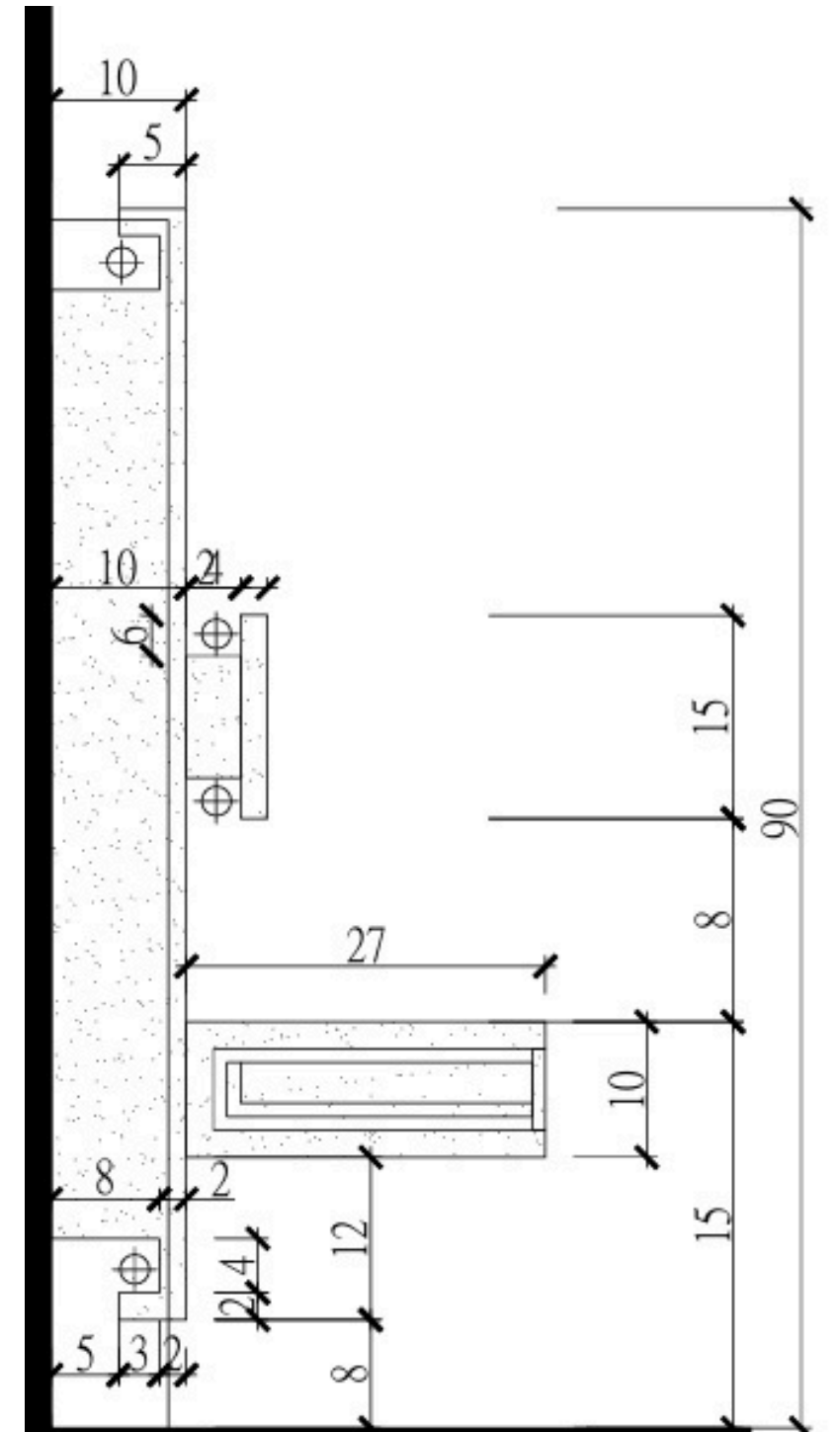
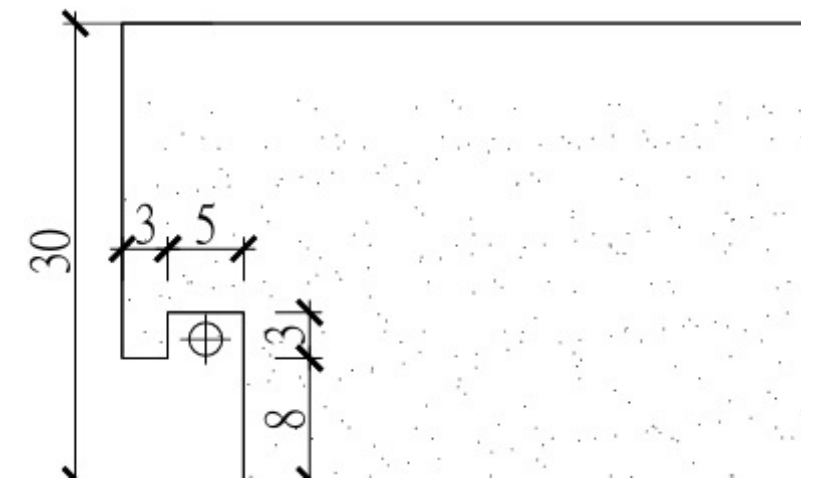
One ceiling near the floor-to-ceiling windows transforms into a curved shape, allowing light to extend along the curved surface and echoing the direction of natural light, symbolizing the bringing of the beautiful image of waves crashing on the shore into the interior.





床體設計則以「輕量化」為出發，於床背板和床底嵌入隱藏光源，讓量體產生微幅離地的視覺效果，降低傳統床架的厚重感，使休憩區域呈現出近似漂浮的輕盈狀態，亦提升夜間氛圍的層次。

The bed design is based on "lightweighting," with hidden light sources embedded in the headboard and under the bed to create a visual effect of the body being slightly off the ground. This reduces the heaviness of traditional bed frames and makes the resting area appear as if it is floating, which also enhances the atmosphere at night.



整體色彩以藍與白為主軸，象徵海與光的和諧關係，搭配白橡木材質的溫潤紋理，平衡空間的冷暖調性，讓每一位入住者，在簡約之中感受到被細緻對待的舒適體驗。





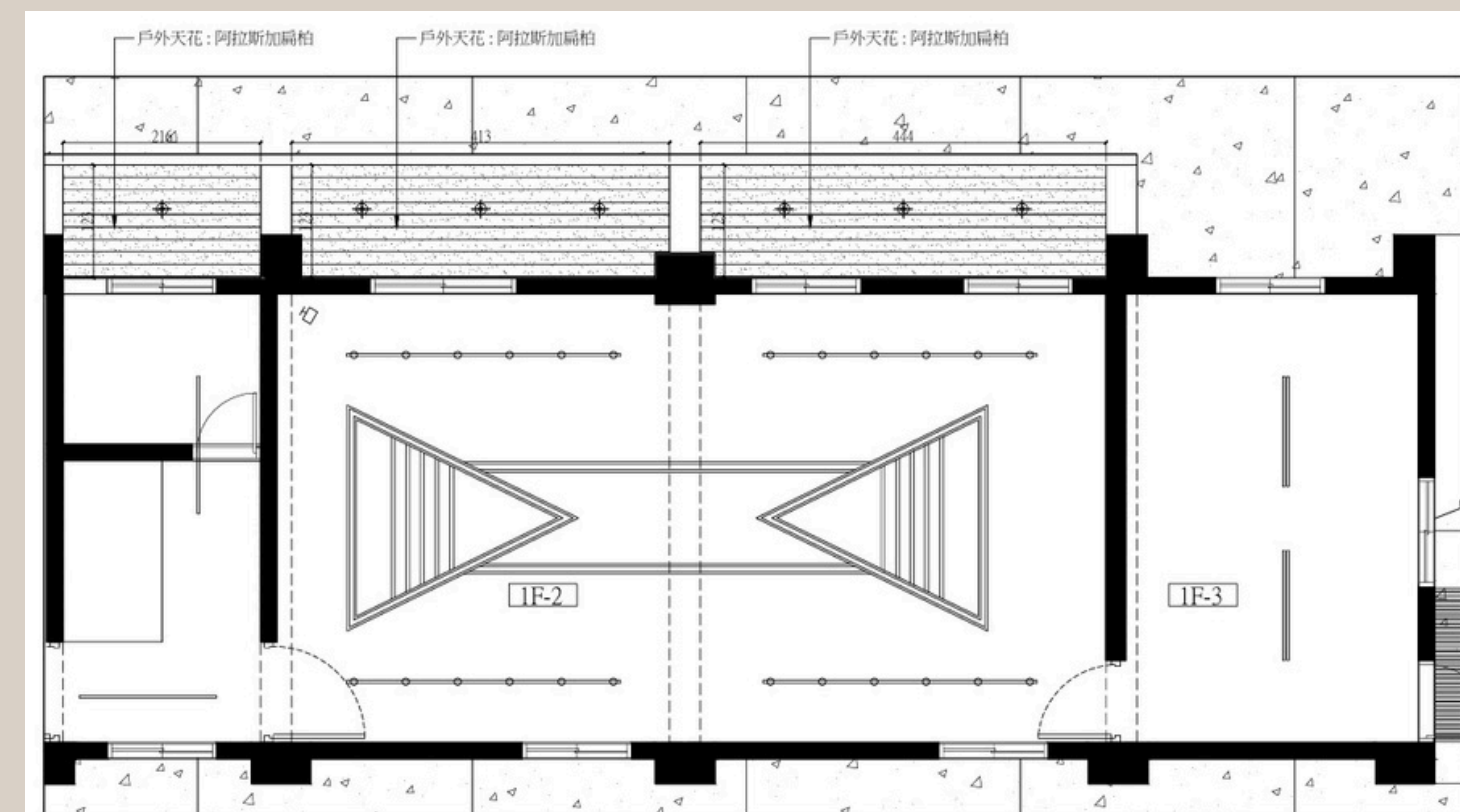
機能突破 — Functional breakthrough



Incorporating "healthy living" into the club's positioning, it features an indoor fitness space rarely seen on Green Island, breaking through the traditional framework of guesthouses that only provide accommodation.

In terms of spatial design, the ceiling uses modern geometry as its main axis, employing symmetrical triangular lighting shapes. Through the extension and interweaving of linear light sources, the space possesses a clear design identity beyond its functionality.

The layered arrangement of lighting avoids the oppressive and monotonous feeling of traditional fitness spaces with their single lighting, further enhancing comfort and focus during use.

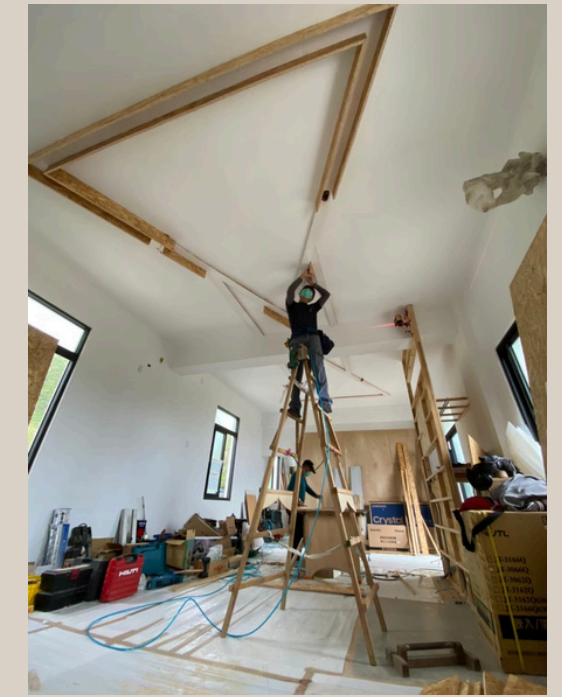


將「健康生活」納入會館定位的一部分，導入全綠島少見的室內健身空間，突破傳統民宿僅提供住宿的機能框架。

空間設計上，天花以現代幾何為主軸，採用對稱三角形燈光造型，透過線性光源的延展與交錯，使空間在功能性之外，亦具備明確的設計識別。

燈光層次的安排，避免傳統健身空間單一照明所帶來的壓迫與單調感，進一步提升使用時的舒適度與專注感。

1. 所有建材、設備及工班皆須由台灣本島調度，從台中出發至綠島，包含陸運與海運，整體運輸距離約為250~300公里。
2. 綠島長期受東北季風影響，海象不穩，船班常因風浪停駛，導致建材無法如期運抵現場。
3. 周邊道路寬度不足3米8，大型車輛難以進場，材料需多次轉運與分批搬運，因此建立彈性施工機制，以因應氣候與運輸不確定性。



All building materials, equipment, and work crews must be sourced from mainland Taiwan, traveling from Taichung to Green Island, including both land and sea transport, with an overall distance of approximately 250-300 kilometers.

Green Island is chronically affected by the northeast monsoon, resulting in unstable sea conditions. Ship services are frequently suspended due to rough seas, causing building materials to be delayed in arriving on time.

The surrounding roads are less than 380 centimeters wide, making it difficult for large vehicles to access the site. Materials need to be transferred and transported in batches multiple times. Therefore, a flexible construction mechanism has been established to cope with the uncertainties of weather and transportation.





最終完成的，不只是一間民宿會館，而是一個結合自然環境、材料時間性與人文的空間作品。  
在嚴峻條件之下，透過設計與工程的整合，將一個理想，轉化為舒適的度假場域。