

Overview

VILLA 49 is a designer's private residence with three above-ground floors and one basement, offering approximately 1,000 sqm of interior space and a 400 sqm ecological garden. The project distills 30 years of design experience and living insights, inspired by the idea of "bringing travel home" — choosing a waterside setting to recreate a relaxed, seaside lifestyle in daily living.

Guided by the concept of Embracing Nature · Intelligent Living, the design adopts an integrated approach across architecture, interior, landscape and furnishings. Organised around water, the space forms a continuous, pool-centred living environment.



Memories of Travel

Custom systems

①

**ULTRA-SLIM
MOTORISED GLAZING**



②

**20-METRE
SEAMLESS CURTAIN**



③

**EXTRA-LARGE
CABINET SYSTEM**





Site Advantages

The site features a regular courtyard facing a river, with woodland on both sides, providing strong natural and ecological resources.



Challenge

1 Aging of building facades



The original exterior of the building is old and the windows for natural light are small.

2 Wall damage and mold growth



Mildew has formed on the interior walls, and the wall surfaces are showing signs of peeling.

3 Low ceiling and poor lighting in basement



The basement has low ceiling height, insufficient natural lighting, and an overall dim environment.

Design Approach

Integrated architecture, Interior, Landscape, and Decoration Design



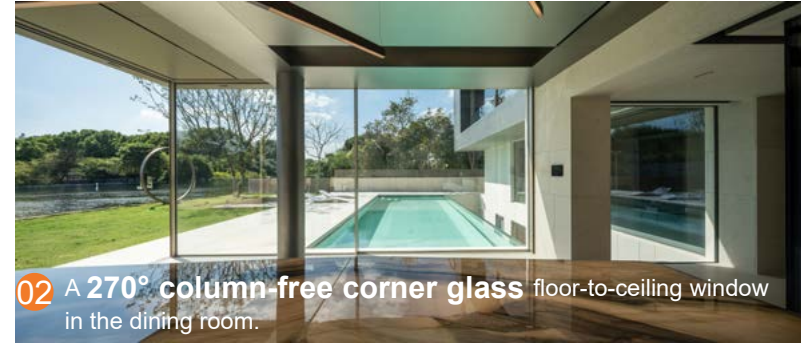
Inspiration

1 Architecture: Dissolving Boundaries

An ultra-slim motorised panoramic glazing system brings the landscape into the interior, allowing the pool and poolside dining to visually extend into the living space.



01 An 8-meter panoramic glass window in the living room



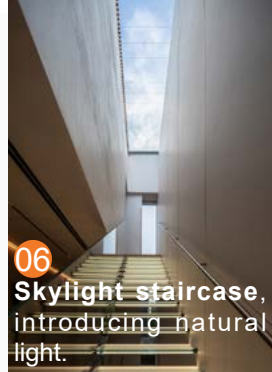
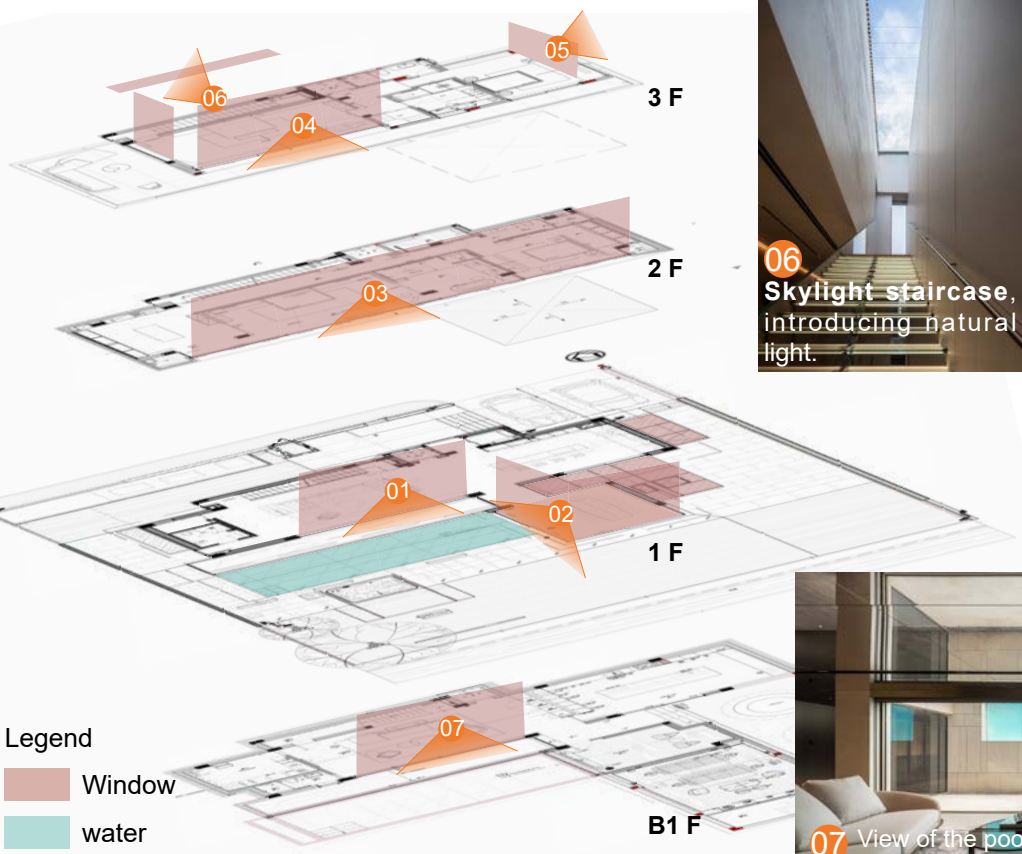
02 A 270° column-free corner glass floor-to-ceiling window in the dining room.



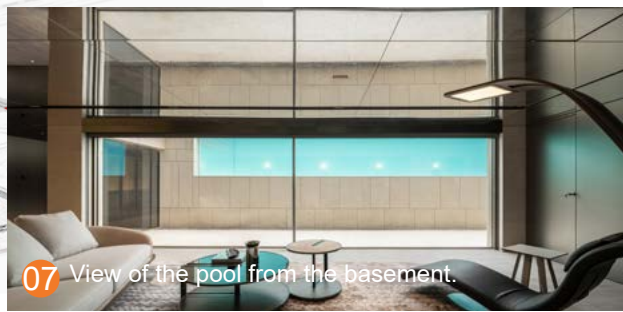
03 A 20-meter continuous window on the building facade



04



06 Skylight staircase, introducing natural light.



07 View of the pool from the basement.

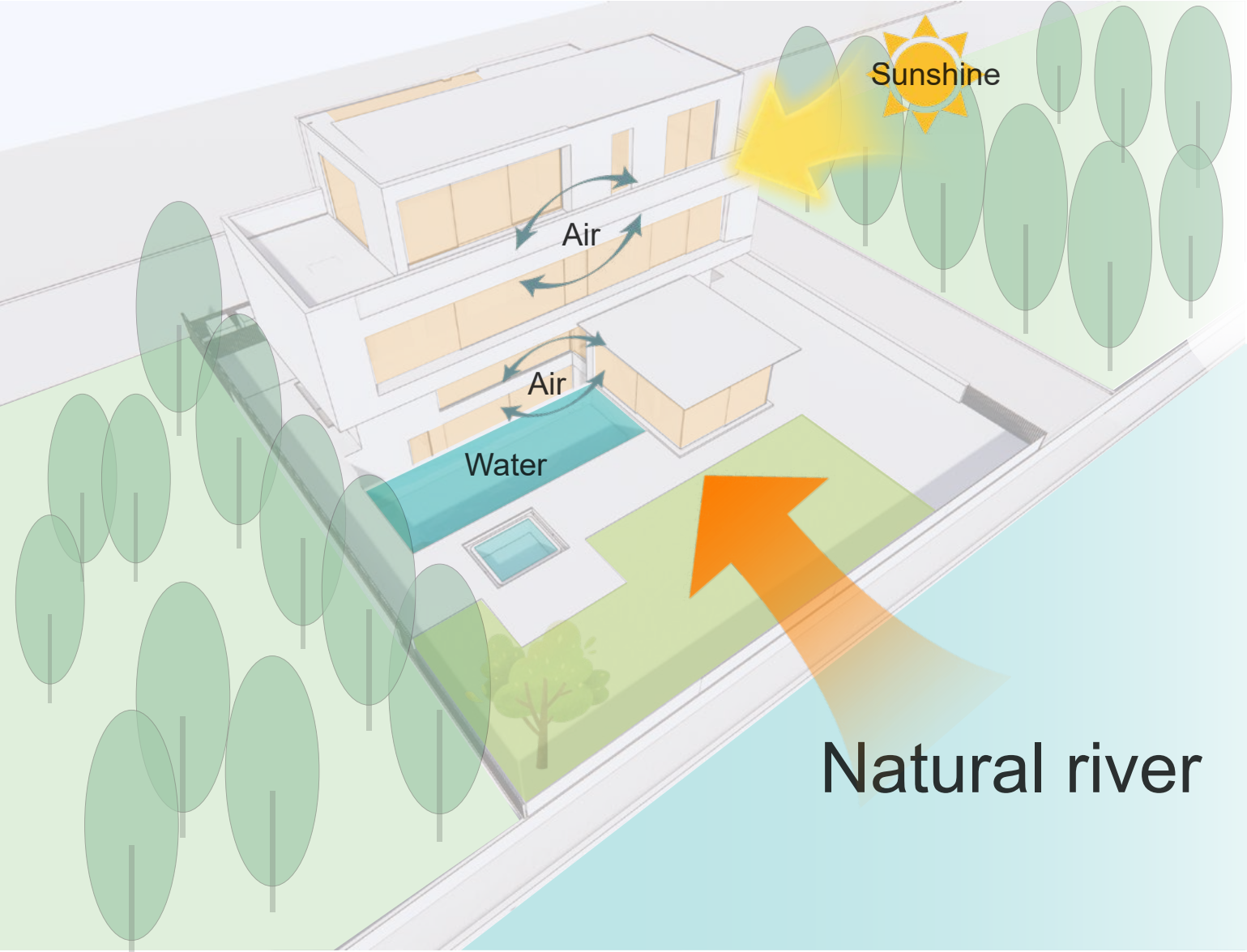


05

Inspiration

2 Water as Space: Light x Water

Water is used as a medium to reconnect people with nature, organising space around water, light, air and daily life.

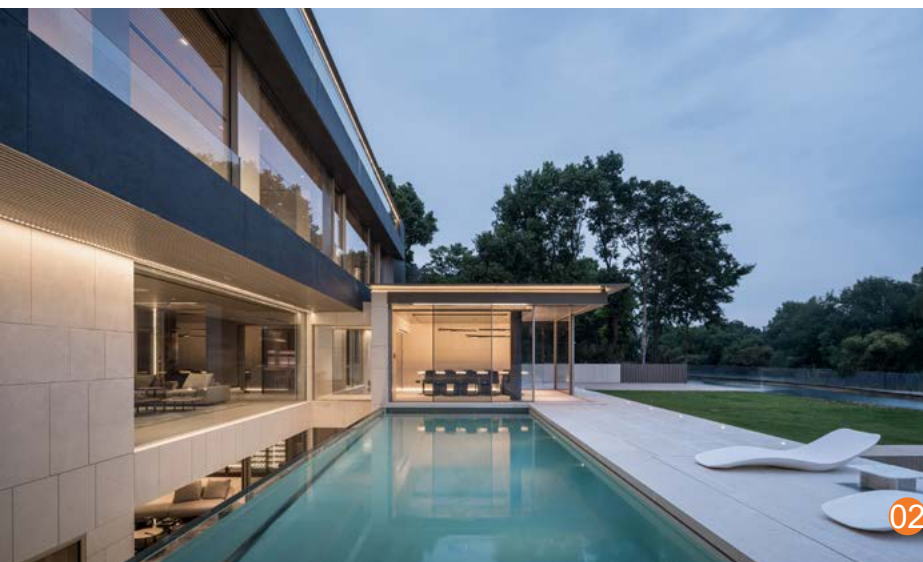
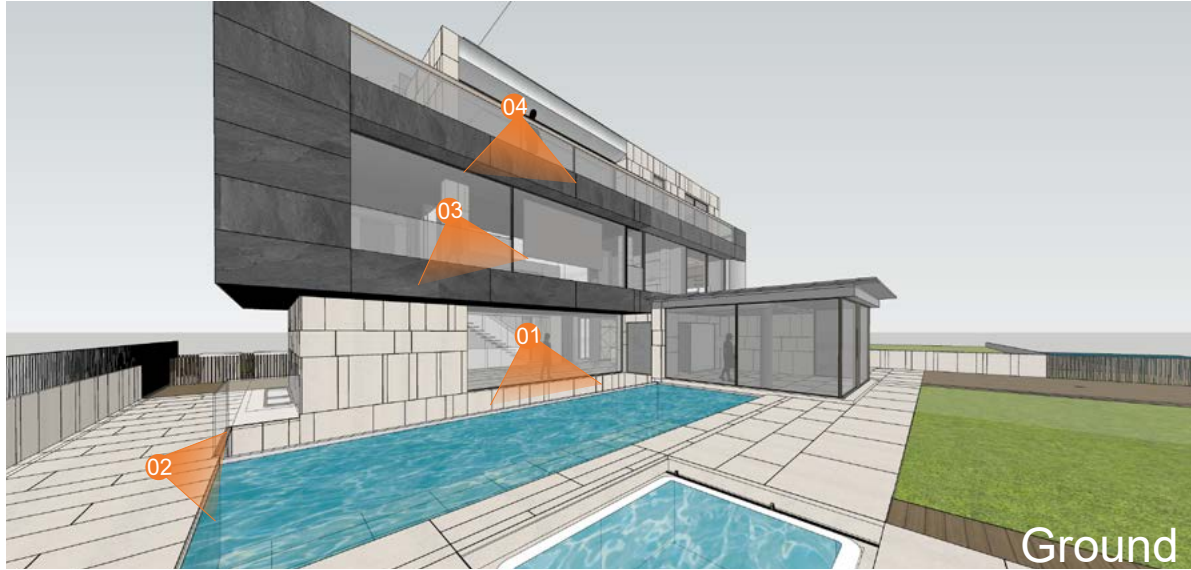


Inspiration

2 Water as Space: Light × Water

The Tiffany Blue pool, spa, water interfaces and mist installations create dynamic light effects.

Water links spaces and family interaction, supporting a continuous, year-round living experience.

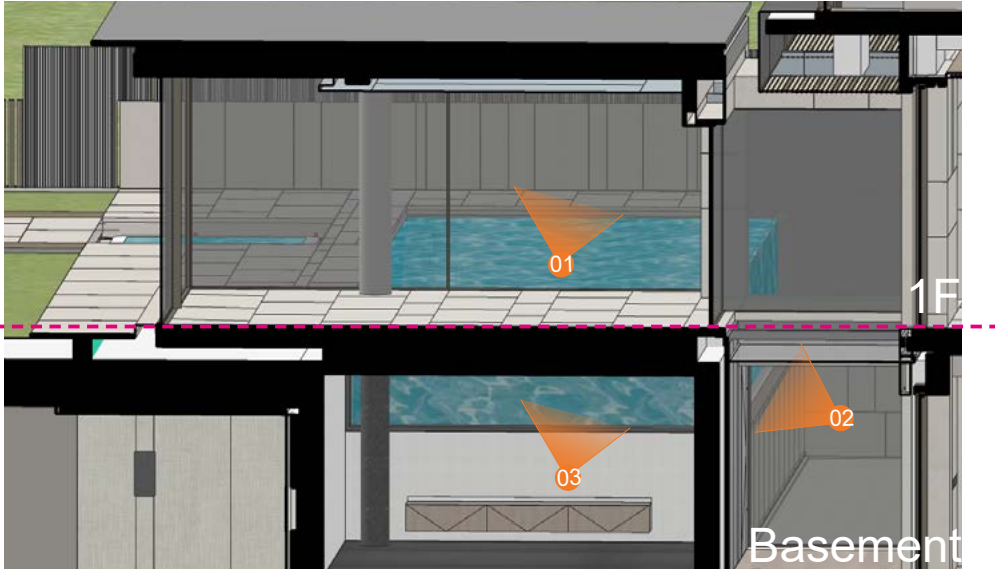


Inspiration

2 Water as Space: Light x Water

The Tiffany Blue pool, spa, water interfaces and mist installations create dynamic light effects.

Water links spaces and family interaction, supporting a continuous, year-round living experience.



Realization technology

To achieve spatial integration and high-quality living, the project developed and applied three core systems:

① Ultra-slim Motorised Window and Door System

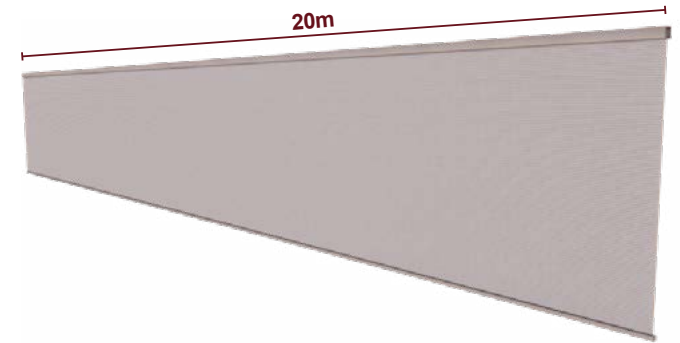
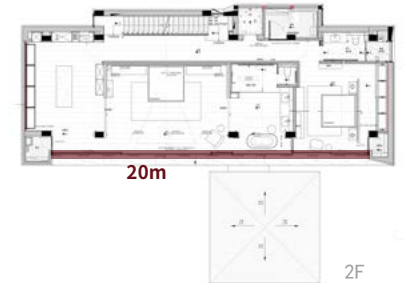
A fully concealed frame design hides upper and lower tracks within the floor, enabling barrier-free movement and a minimal interface. It ensures safety while providing continuous panoramic views and strengthening indoor-outdoor connectivity.



Realization technology

② 20-Metre Seamless Motorised Curtain System

A fully concealed frame design hides upper and lower tracks within the floor, enabling barrier-free movement and a minimal interface. It ensures safety while providing continuous panoramic views and strengthening indoor-outdoor connectivity.



Weather sensing device



Sun Light



Rain



Wind

Integrated with light and weather sensors, the system automatically adapts to environmental changes—providing shade under strong sunlight and openness when conditions allow.

Smart Environmental Response

It transforms shading into a responsive interface, enhancing comfort, energy efficiency, and spatial experience.



Shading that thinks with the environment

Realization technology

③ Extra-large size cabinet system

Measuring 4500 × 1500 × 900 mm, the island .
A 6 mm solid stainless steel sheet is formed as a seamless surface,
ensuring precision and integrity at large scale.
The design redefines the kitchen from functional equipment to a central spatial
element connecting daily life.



Centered on a 4500 × 1500 × 900 mm large-scale island, the design integrates washing, preparation, and cooking into one continuous surface, allowing actions to flow naturally without interruption.



6 mm solid stainless steel monolithic sheet

FUNCTION

PREP



COOKING



STORAGE

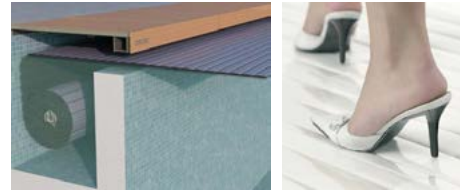


INTERACTION





Motorized Thermal Cover



Motorized Thermal Cover:

Integrating heat retention, thermal insulation, dust protection, and leaf prevention, the cover significantly reduces energy consumption when the pool is not in use. With one-touch operation, it opens smoothly without interfering with courtyard circulation or daily activities.

Intelligent Living

SPA Warm Water System: A Resort-Style Oasis for All Seasons

A 40°C SPA warm water pool is set alongside the swimming pool, equipped with an automatic cover system:

When not in use, it serves as a walkable platform, preserving garden space.

When opened, it creates a resort-like experience combining a swimming pool and a warm water spa.

Ideal for winter and evening use, it meets both family-friendly and adult leisure needs. This system provides the home with a truly "year-round water amenity," seamlessly integrating a resort lifestyle into daily living.



42°C Constant-Temperature Pool

Technical properties

Integrating heat retention, thermal insulation, dust protection, and leaf prevention, the cover significantly reduces energy consumption when the pool is not in use. With one-touch operation, it opens smoothly without interfering with courtyard circulation or daily activities.

Key Technologies & Specifications:

1) 12,000 mm transparent acrylic swimming pool, constructed with approximately 120 mm thick aquarium-grade acrylic, offering high structural strength and clarity;

integrated with a water circulation and filtration system, air-source heat pump temperature control (approx. 30°C), and an automated thermal cover for safety and year-round use.

Key Technologies & Specifications:

1) **12,000 mm transparent acrylic swimming pool**, constructed with approximately 120 mm thick aquarium-grade acrylic, offering high structural strength and clarity; integrated with a water circulation and filtration system, air-source heat pump temperature control (approx. 30°C), and an automated thermal cover for safety and year-round use.



With its high water clarity, the pool reveals a Tiffany Blue gradient created by natural light refraction, becoming the visual focal point of the space.



Materials

Transparent Acrylic Pool
120 mm aquarium-grade acrylic ensures strength, safety, and exceptional clarity

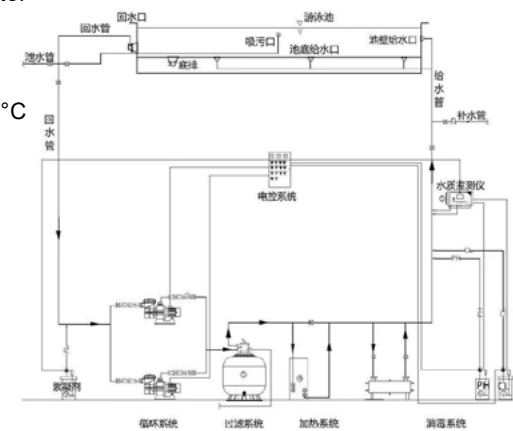
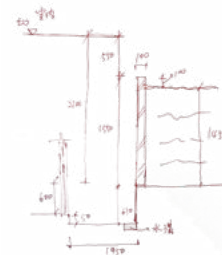


Chemical-Free Filtration

Circulation-based purification keeps the water clear and gentle without chlorine or chemicals.

Air-Source Heat Pump

An energy-efficient system maintains ~30 °C year-round, enabling all-season use.



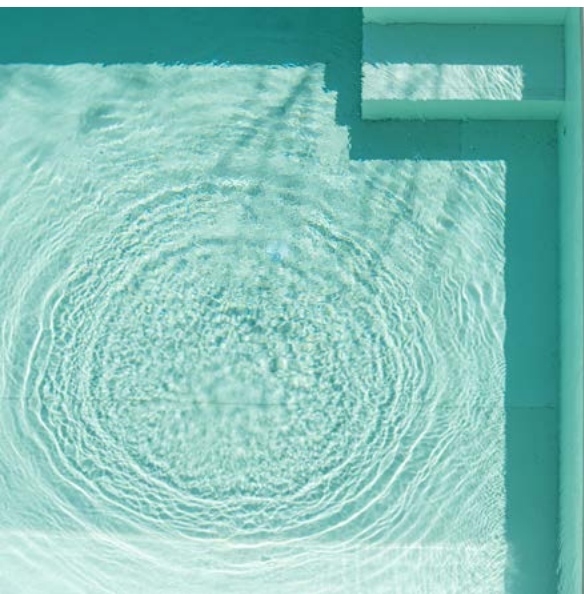
Tiffany Blue Pool



Talenti
OUTDOOR LIVING



Italian imported brand: Talenti Reef





8-meter seamless glass façade



Key Technologies & Specifications:

- 2) Living room: 8,000 mm seamless full-height glass façade.





A 20-meter continuous glass façade

Key Technologies & Specifications:

- 3) Bedroom: 20,000 mm continuous panoramic glazing interface.





1F - Living Room

Materials & Systems:

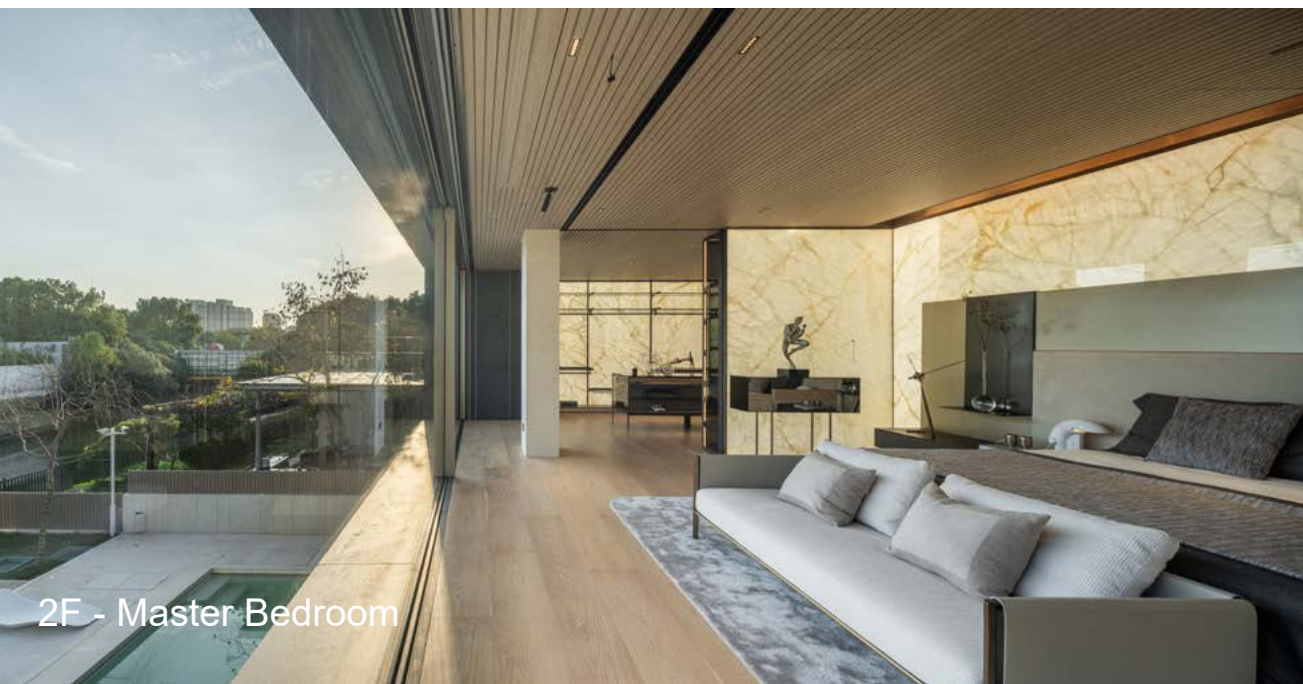
4) Extensive use of illuminated natural stone across major functional spaces.



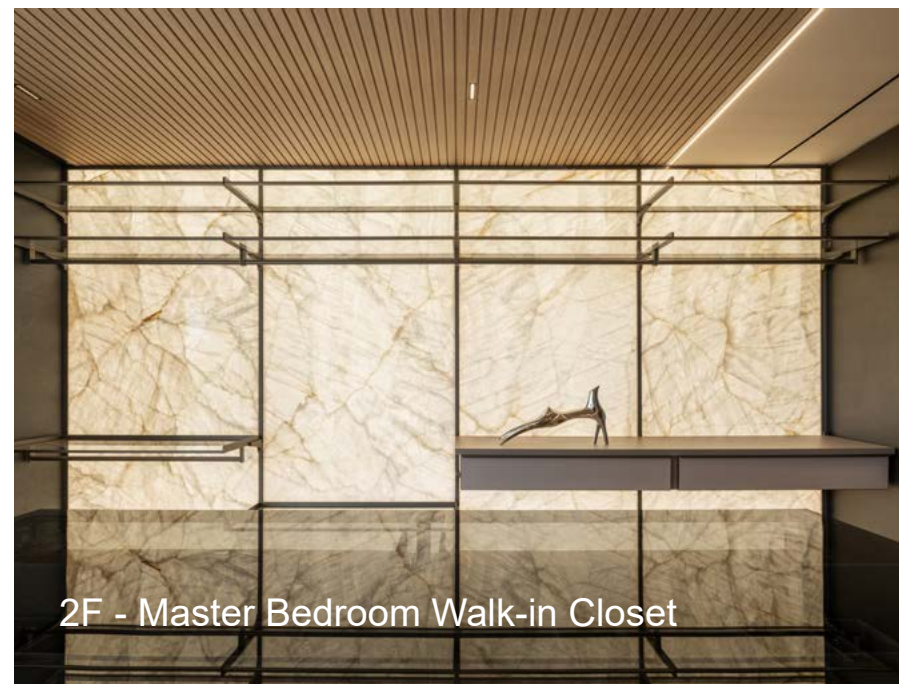
White Crystal (with built-in LED light tube)



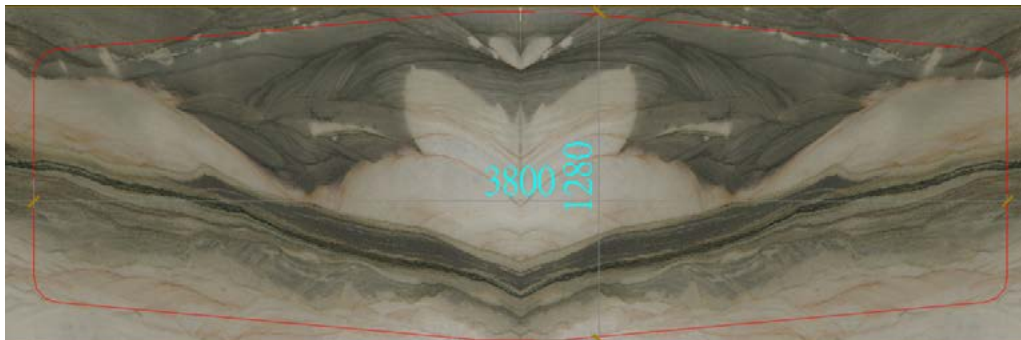
An illuminated entrance door made of natural stone



2F - Master Bedroom



2F - Master Bedroom Walk-in Closet



Original "Desert Hills" Natural Marble Dining Table

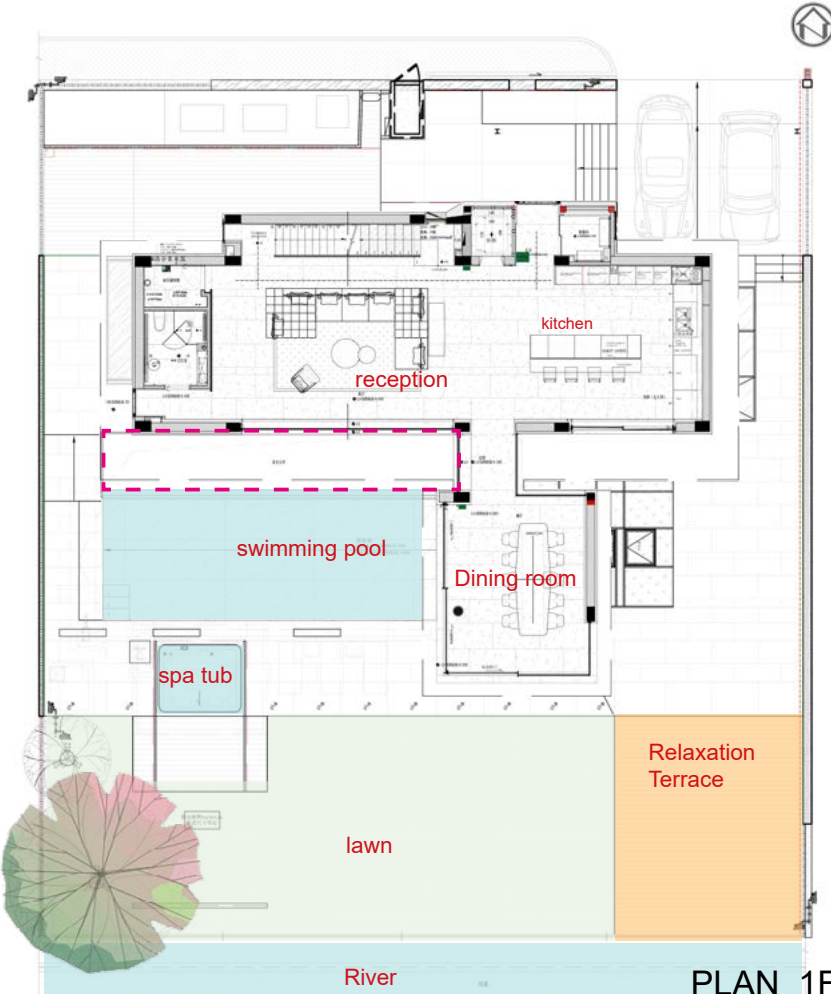


Materials & Systems:

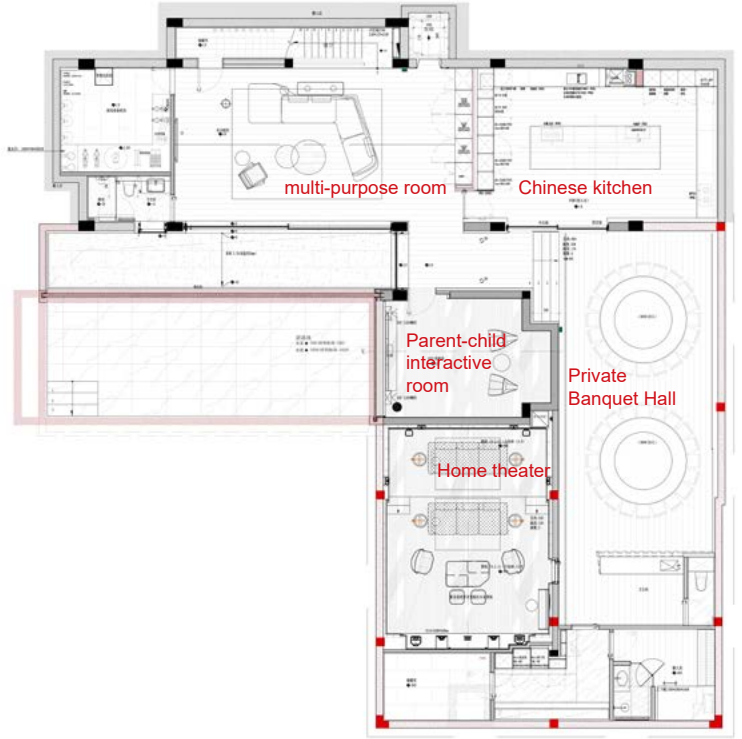
- 5) Custom luminous jade dining table, alongside the development of a fully natural marble illuminated wardrobe system.



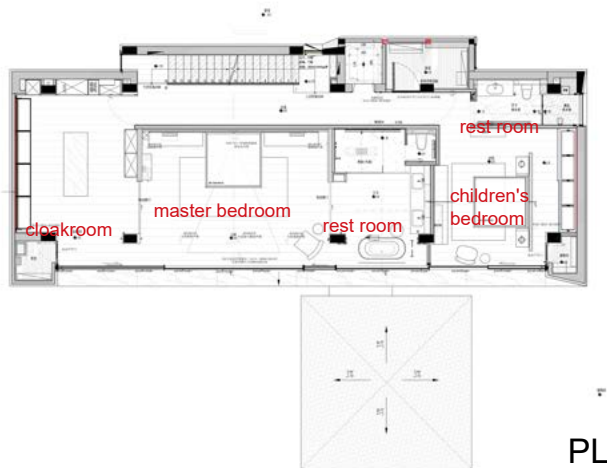
PLAN



PLAN 1F



BASEMENT



PLAN 2F



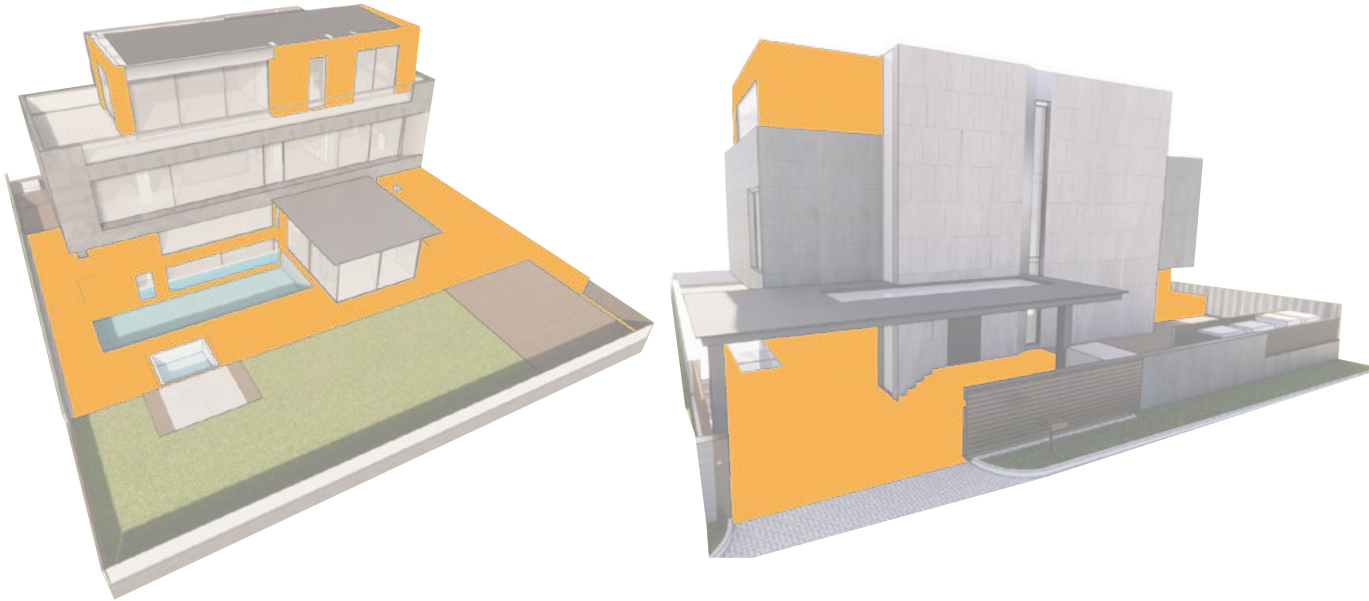
PLAN 3F



Unified materials

Material: Unified Beige Stone

A consistent beige stone is used throughout the architecture, interior, and landscape to create a seamless integration of all three elements.



Seamless integration of architecture, interior, and landscape through a unified stone system. Boundaries dissolve, spaces flow, creating a holistic living environment.

Legend

 Beige Stone



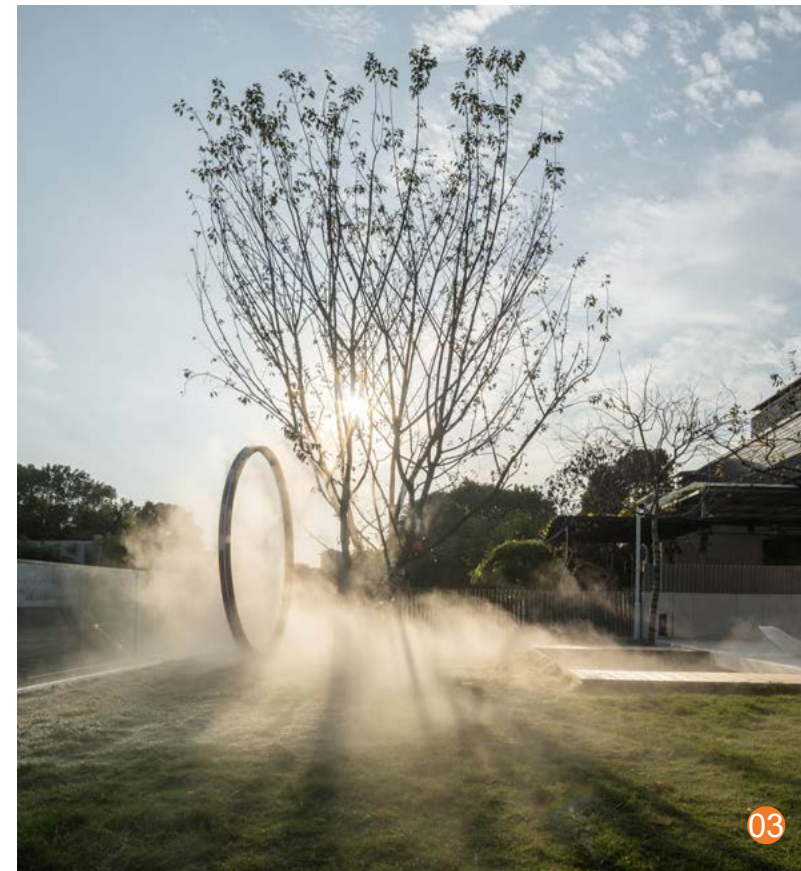
Interaction

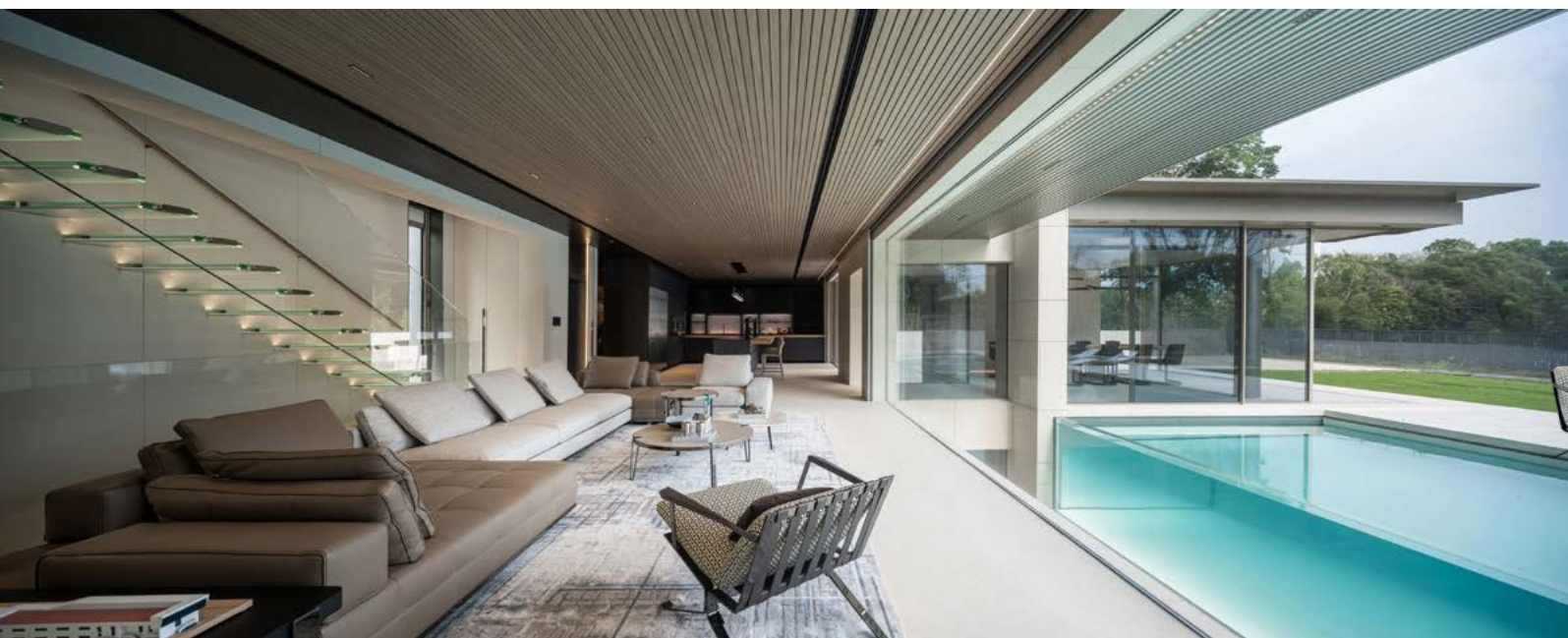
The residential spaces are organized around a **poolside living concept**. The living and dining areas connect directly to the pool through fully openable glass interfaces, creating a continuous indoor-outdoor experience.



Family members remain visually connected across different floors and spaces.

Children can move freely between the pool and garden, while adults maintain easy supervision and interaction from indoors, allowing communication and social activities to occur naturally.





Minotti

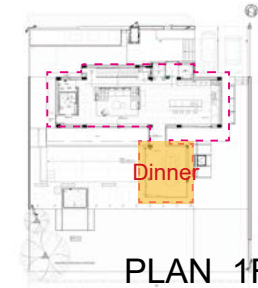
Italian imported brand: Minotti



Italian imported brand: Trussardi

A fully integrated smart-home system enables **one-touch control of doors, windows, curtains, lighting, and environmental systems** via mobile devices or wall panels, ensuring simple and intuitive operation.





Life Scenarios Organized from the "Poolside"

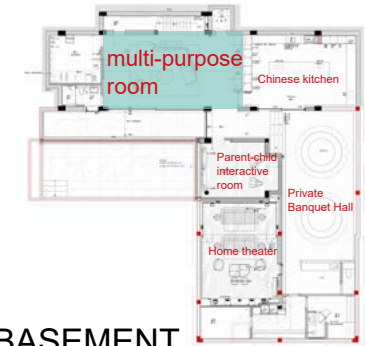
The design reimagines the home's core space around "poolside living."

Floor-to-ceiling glass seamlessly connects the living and dining areas to the pool, creating an open visual flow.

Across floors and spaces, family members interact naturally—children play freely while adults supervise comfortably from indoors. Care, conversation, and connection happen organically.



The restaurant is equipped with 270° pillar-less corner glass floor-to-ceiling windows.



BASEMENT



The Tiffany Blue swimming pool addresses the lack of natural light in the basement, while the mirrored ceiling visually enhances the height of the space.





désirée 



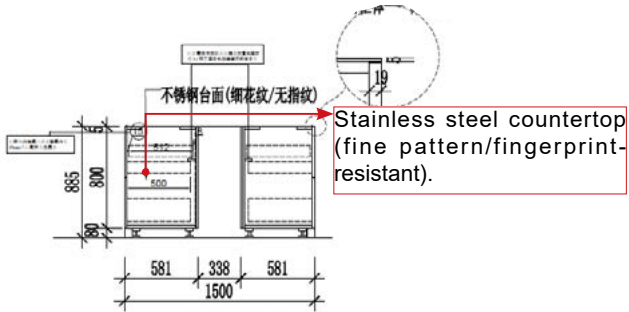
Italian imported brand: Desiree



Co-developed kitchen island

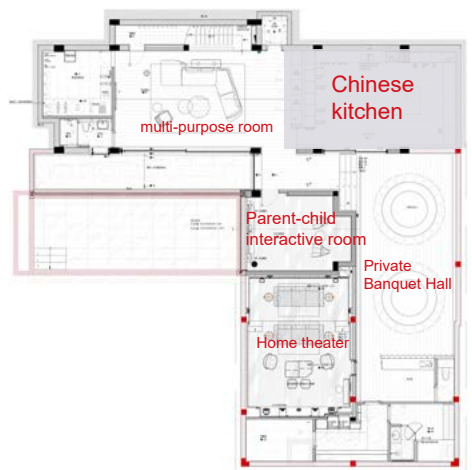
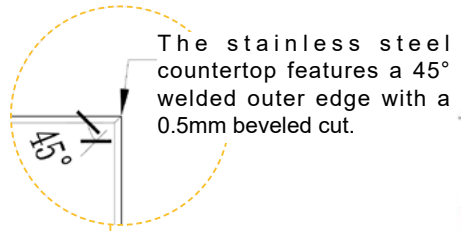
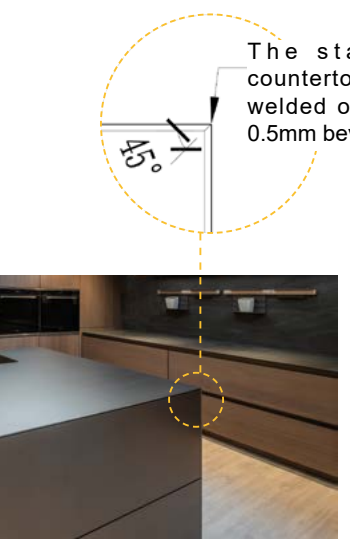
The basement kitchen island is a 4.5-meter-long, 1.5-meter-wide seamless stainless steel island, co-designed by our company in collaboration with Poggenpohl, the German high-end kitchen brand.

GATHERINGS

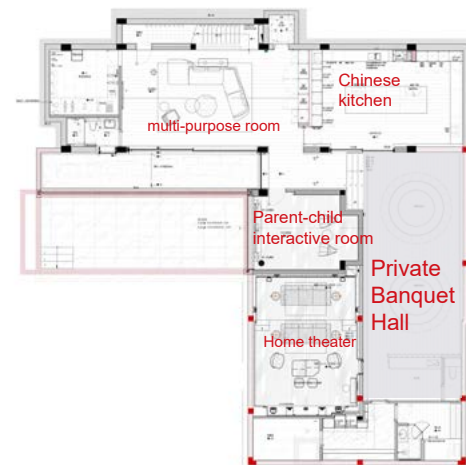
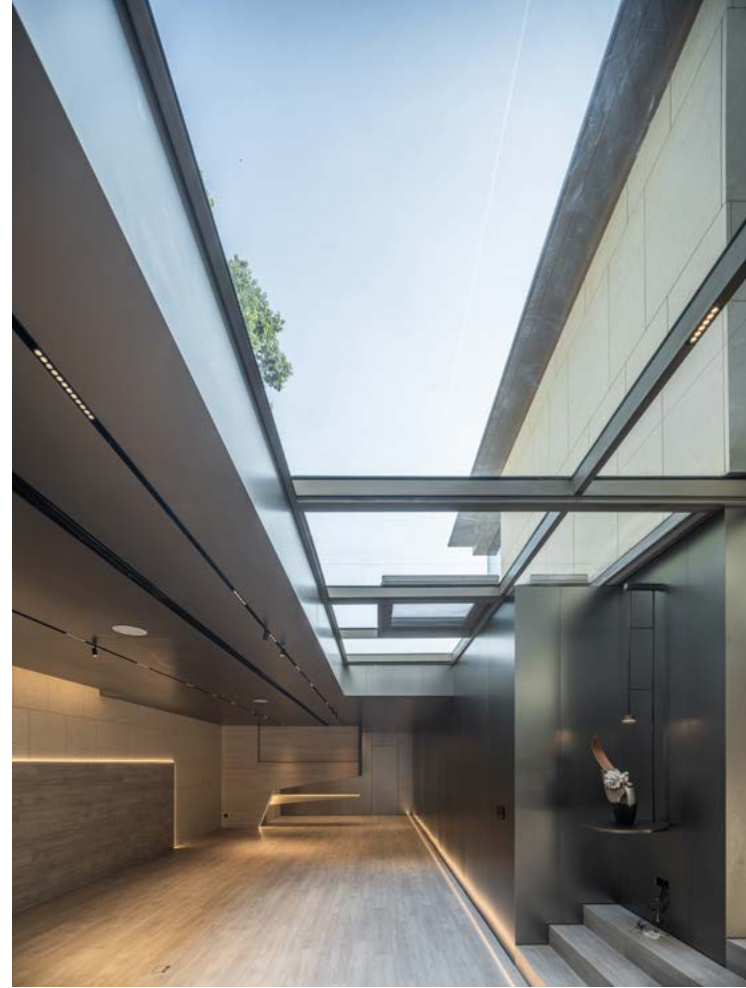


Cross-section view of the kitchen island.

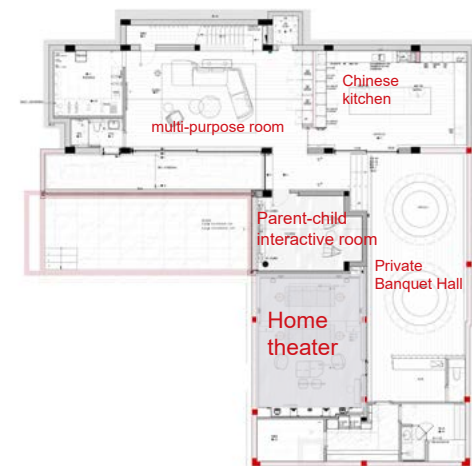
Extra-large seamless stainless steel island countertop



The basement kitchen



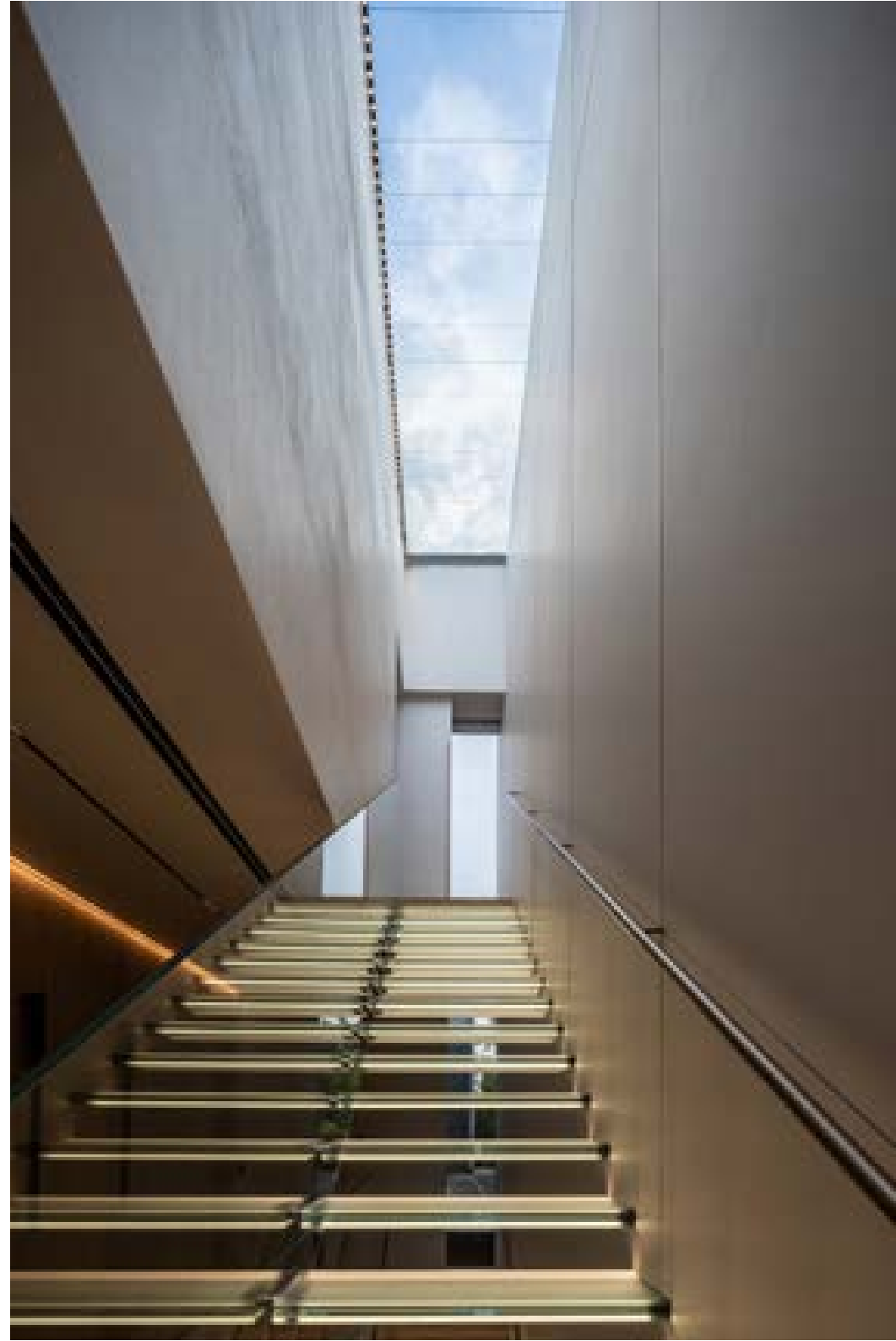
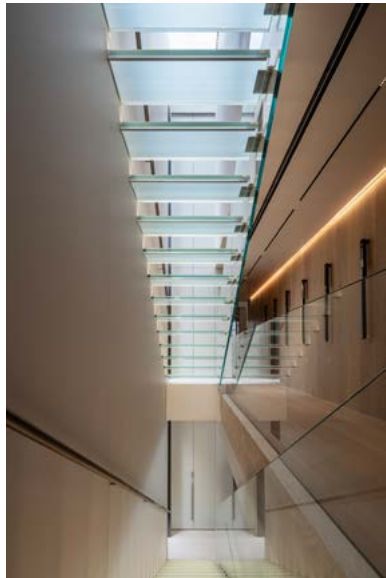
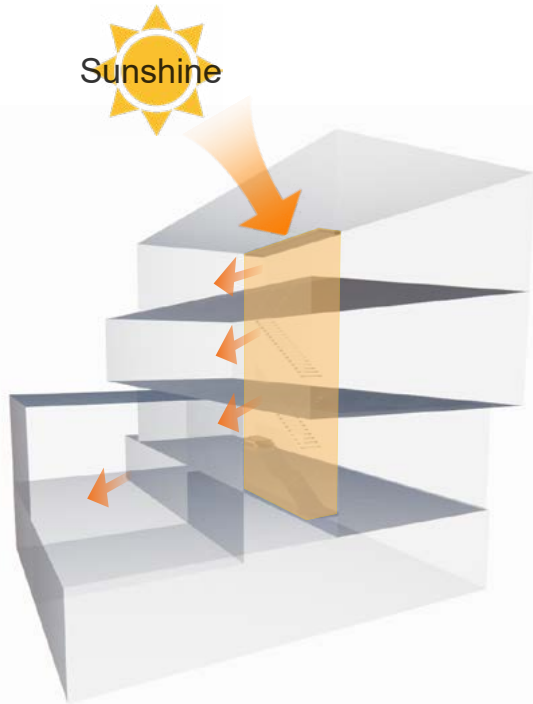
Private Banquet Hall



Home theater

Staircase of Light

A skylight staircase that channels natural sunlight into the heart of the home. Frameless glass structure with embedded light strips emphasizes a transparent, lightweight visual effect.



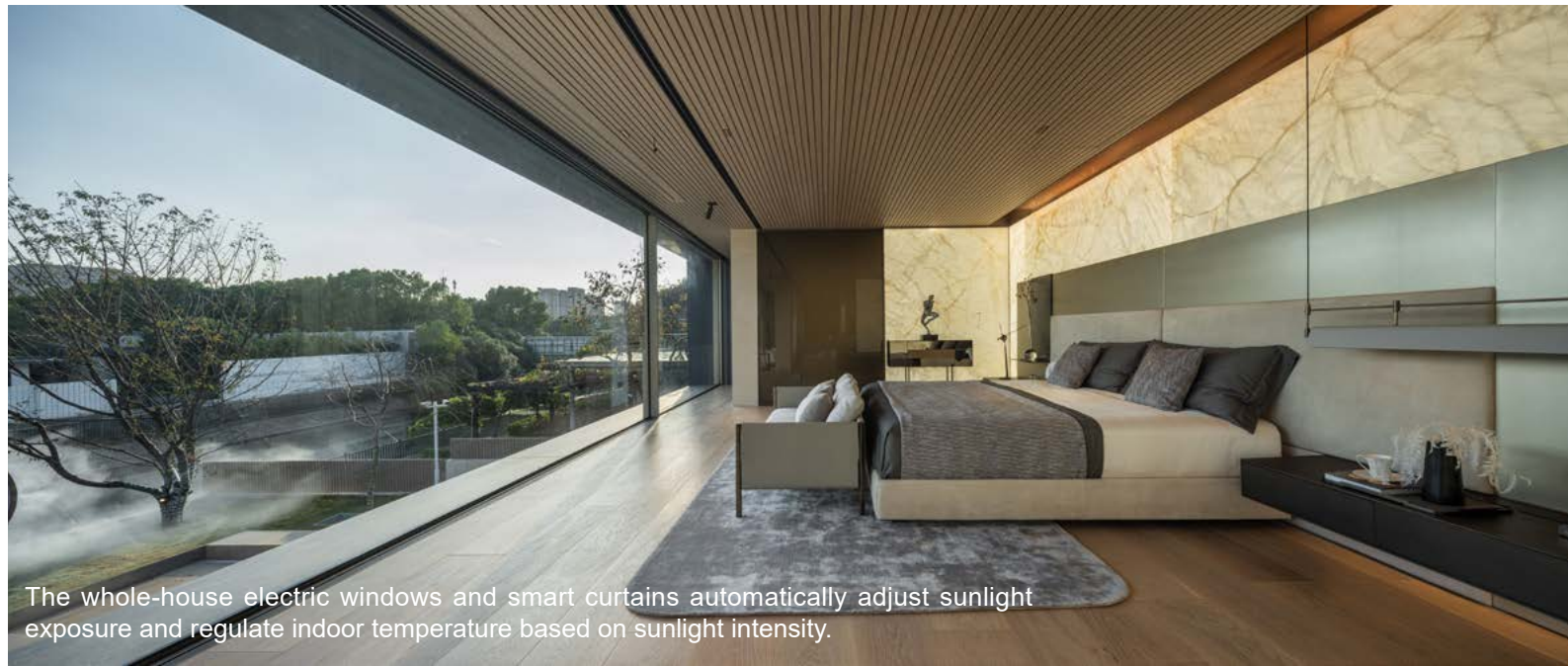


PLAN 2F

Intelligent Living



Customize a 28-meter-long electric curtain weighing 300 kilograms, with 5 built-in steel pipe reels, suitable for panoramic glass in the bedroom.



The whole-house electric windows and smart curtains automatically adjust sunlight exposure and regulate indoor temperature based on sunlight intensity.



PLAN 2F



ligne roset®
depuis 1860



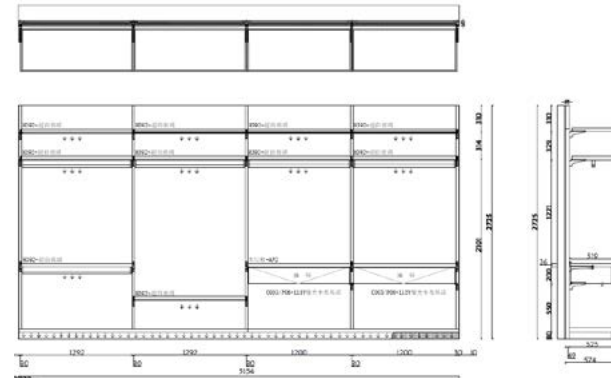
Italian imported brand: ligne roset





Material Innovation:

Creating China's first all-natural marble wardrobe, showcasing luminous stone slabs in their full, uninterrupted beauty.



Drawer Front:C003/P06-115Y Matte Cappuccino

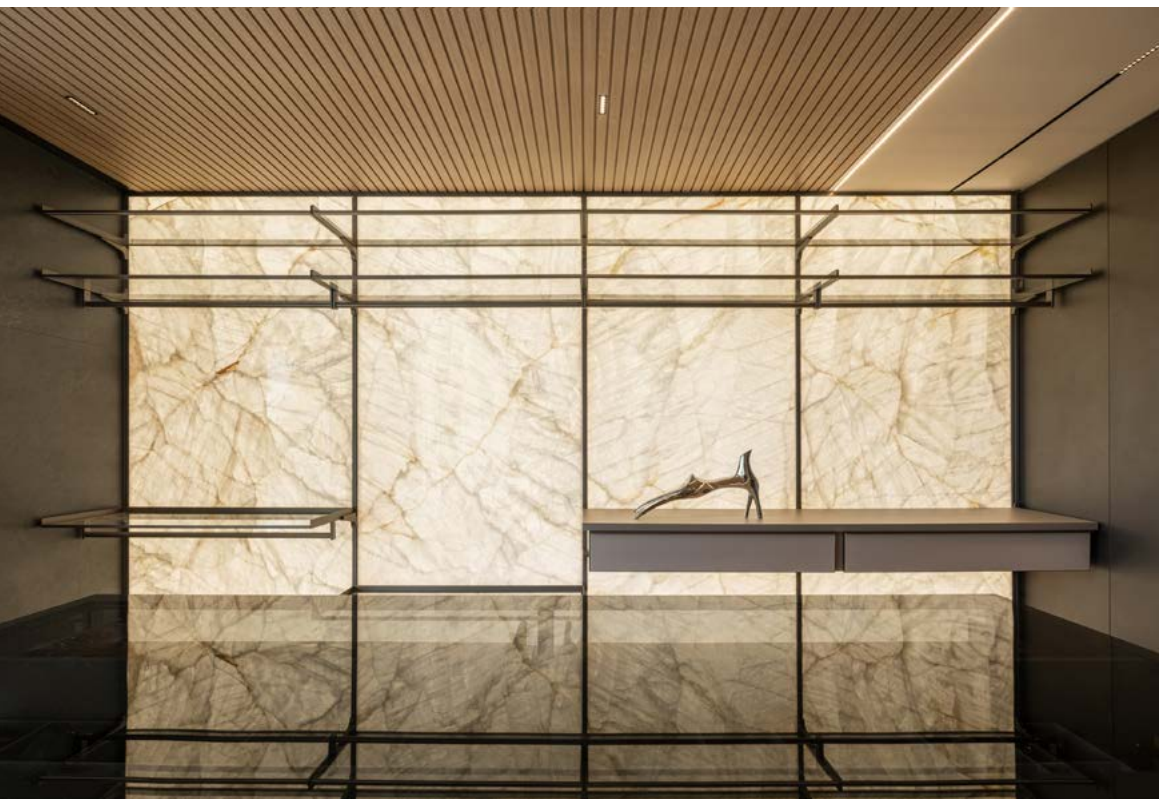
Shelf Lighting: Ultra-Clear Glass

Back Panel: Client-supplied luminous marble, 49mm thick + 12mm wood substrate

Panel Material: AP2

Ceiling Height:2740mm - 12mm = 2728mm (aluminum alloy adjustment)

Cabinet Height:2725mm





PLAN 2F

All bathrooms feature "minimalist ultra-thin glass doors + marble/stone slabs" (no wood finishes, preventing mold).

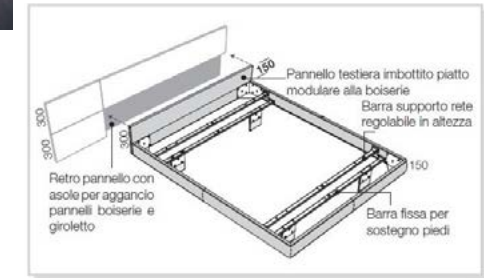
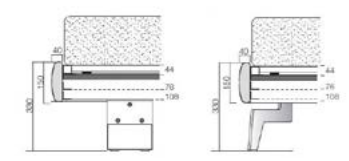
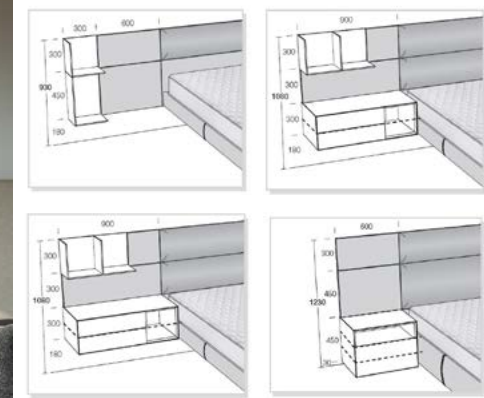
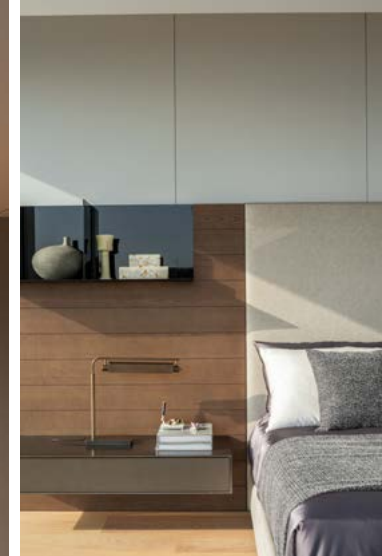


PLAN 2F

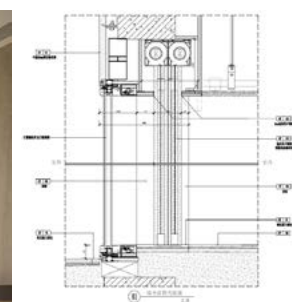
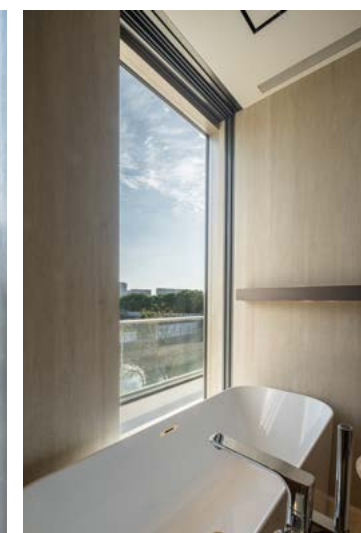
Barrier-free design

1. The water barrier is "flush with the floor + sloped," providing comfortable footing and preventing mold.
2. The shower area features a "rotating sliding door."





The integrated design of the bed and back panel allows for versatile combination possibilities.



Frame-view doors and windows offer safety without compromising the enjoyment of outdoor scenery.

Framing a view — each scene is a world of its own.



The project does not seek formal novelty, but responds to real living needs:

- Making water safer and usable year-round
- Allowing light to truly enter the home
- Encouraging natural family interaction
- Letting technology serve life, not disrupt it

Ultimately, a water-centered residence emerges—one that connects nature, family, and time.



PLAN 3F