



土城華固住宅案

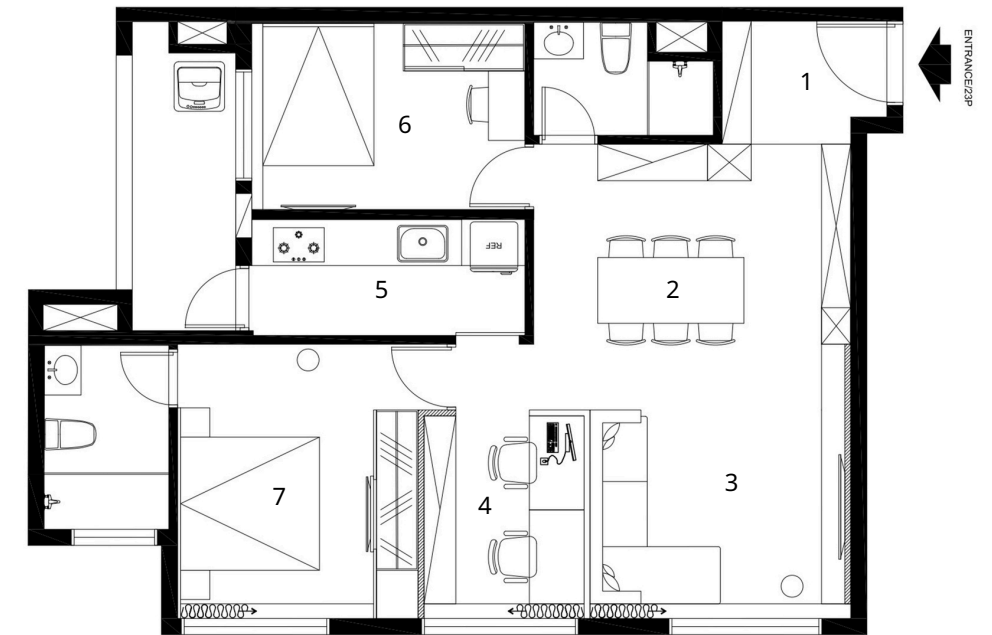
平面圖

1. 玄關
2. 餐廳
3. 客廳
4. 半開放式書房
5. 廚房
6. 次臥
7. 主臥

設計說明

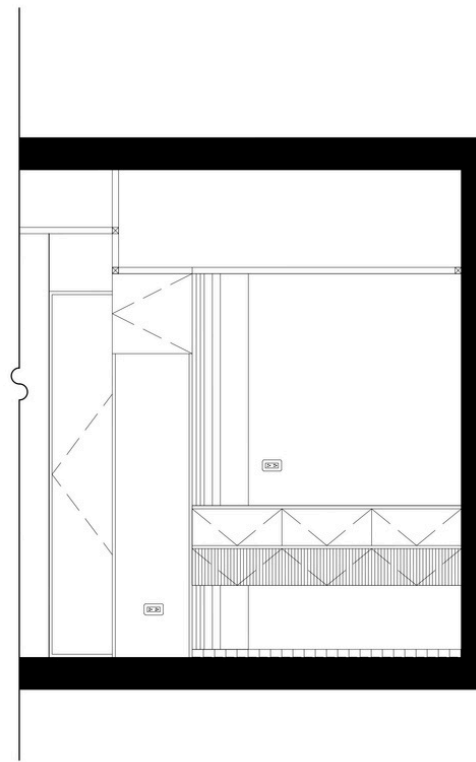
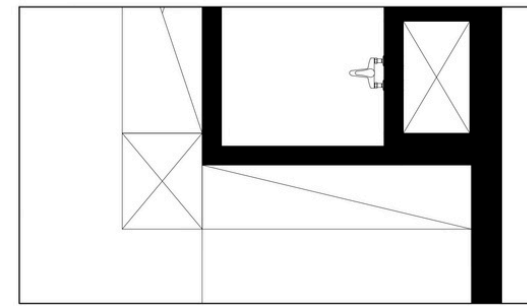
本案以優化既有空間格局為出發點，透過動線重整與開放尺度的拿捏，引入更多自然景觀與日光，讓居者在返家之際，即能感受放鬆而愜意的生活氛圍。材質選用上，以大板磚的自然紋理為主軸，並透過桌面材質相互呼應，形塑整體一致且純粹的視覺語彙。同時，設計團隊巧妙化解原有大樑的壓迫感，改以鏡面材質包覆，串聯空間中的自然紋路，使光影流動之間，如層巒倒映湖面，為場域注入沉穩而內斂的氣質。

整體色彩以溫潤的大地色系統整鋪陳，並在不同量體與介面中延續相同語彙：如床頭繡布比例結合細緻木紋，營造柔和層次；玄關鏡面則延伸大理石地坪紋理，放大空間尺度。透過材質、比例與光影的細膩堆疊，使整體空間在簡約之中蘊含豐富層次，展現靜謐而高質感的居住表情。



This project begins with optimizing the existing spatial layout, carefully refining circulation and spatial openness to introduce more natural scenery and daylight. The goal is to create a home that immediately feels relaxing and comfortable upon arrival. In terms of material selection, large-format tiles with natural veining serve as the primary design language, echoed by the tabletop finishes to establish a cohesive and pure visual expression. The design also thoughtfully transforms the original structural beam—once a spatial weakness—by cladding it with mirrored surfaces that connect and reflect the natural patterns throughout the space. As light moves across these surfaces, the atmosphere evokes layered mountains mirrored upon a tranquil lake, lending the interior a calm and restrained character.

A warm earth-tone palette unifies the overall composition and is consistently extended across different volumes and surfaces. For example, the upholstered headboard proportions are paired with refined wood grain to create soft layering, while the entry mirror visually extends the marble flooring to enhance spatial depth. Through the careful orchestration of materials, proportions, and light, the space achieves a minimalist yet richly layered aesthetic, expressing a serene and refined living environment.



設計說明

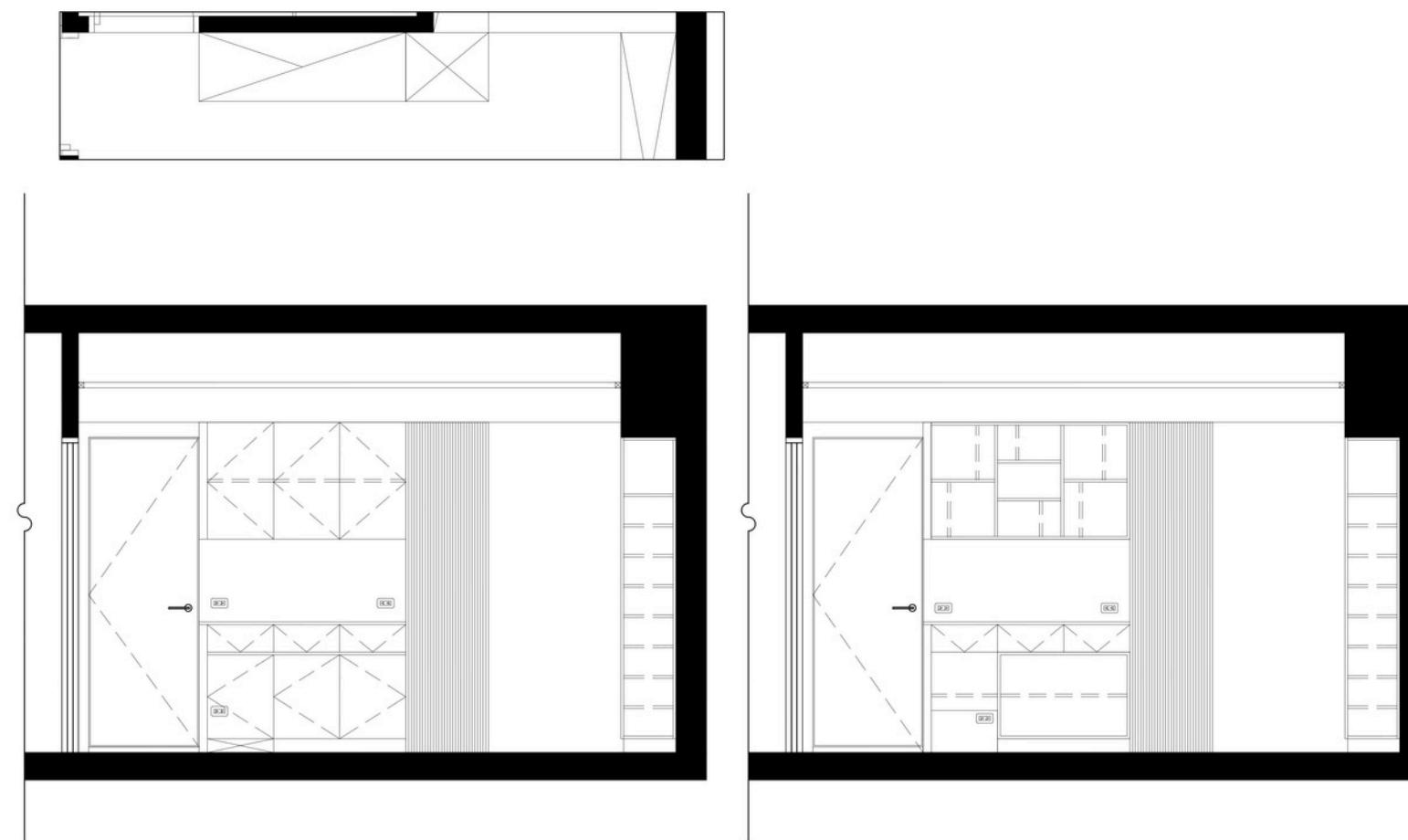
玄關以深木皮包覆天花延伸立面，鏡面右側鏡面放大尺度並強化入口空間，搭配深色石材地坪形塑沉穩基調；懸浮櫃體結合垂直線條飾板，弱化量體。左側整合電子衣櫥，機能隱於純粹介面之中。

The entryway is wrapped in dark wood veneer extending from ceiling to walls, while the mirrored surface on the right visually enlarges the space and reinforces a sense of arrival. A dark stone floor establishes a calm, grounded atmosphere. Floating cabinetry with vertical detailing lightens the overall mass, as an integrated electronic wardrobe on the left discreetly conceals functionality within a refined, minimalist envelope.

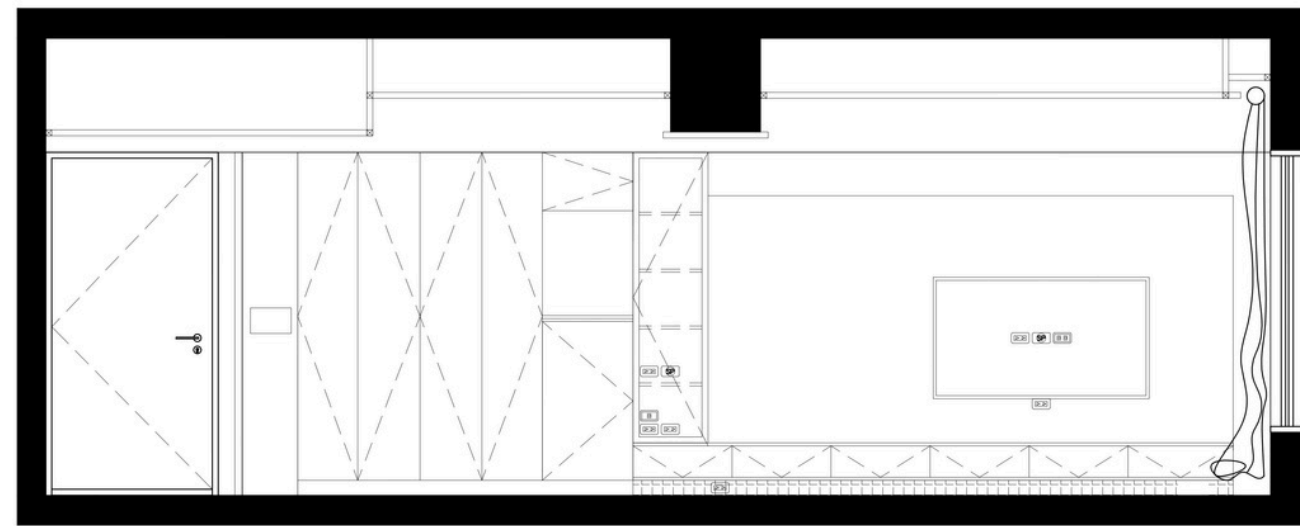
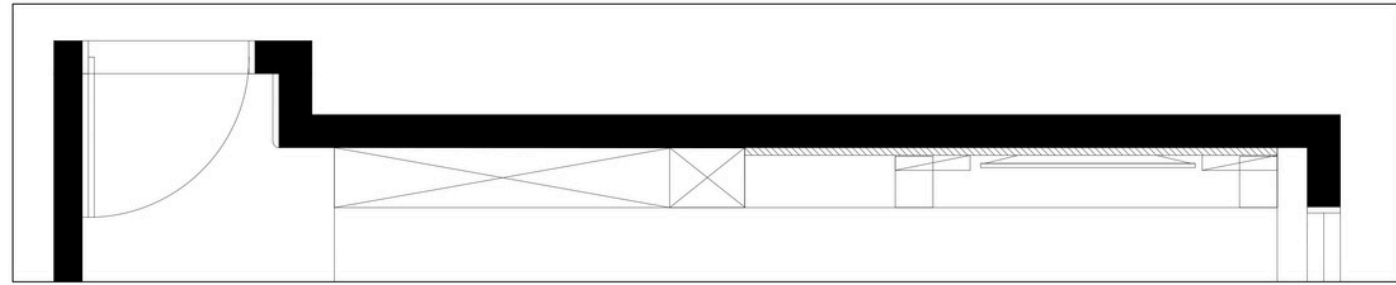


設計說明

餐廳以深色木皮餐邊櫃搭配玻璃吊櫃，兼顧展示與收納；下方櫃體整合掃地機器人回充空間。石材餐桌搭配弧形導角櫃體，柔化動線轉折，形塑沉穩而細膩的用餐氛圍。



The dining area features dark wood veneer sideboard cabinetry paired with glass-fronted wall units, balancing display and storage. The lower cabinets integrate a concealed docking space for a robotic vacuum. A stone dining table is complemented by softly curved cabinetry edges, easing circulation and shaping a calm, refined dining atmosphere.

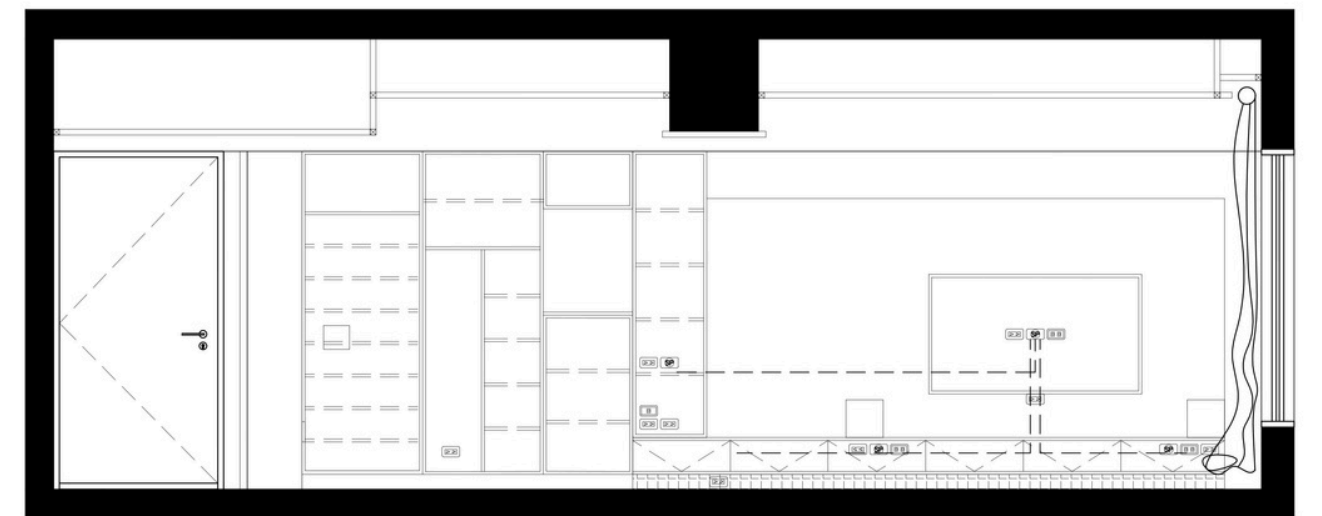
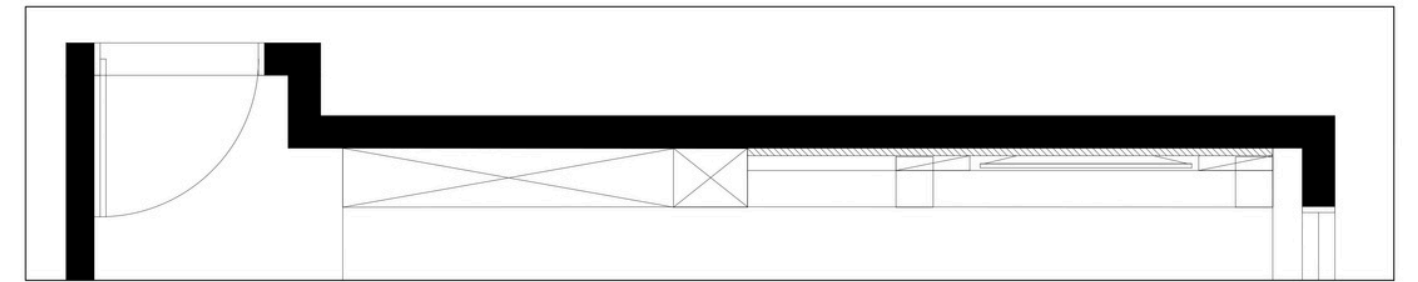


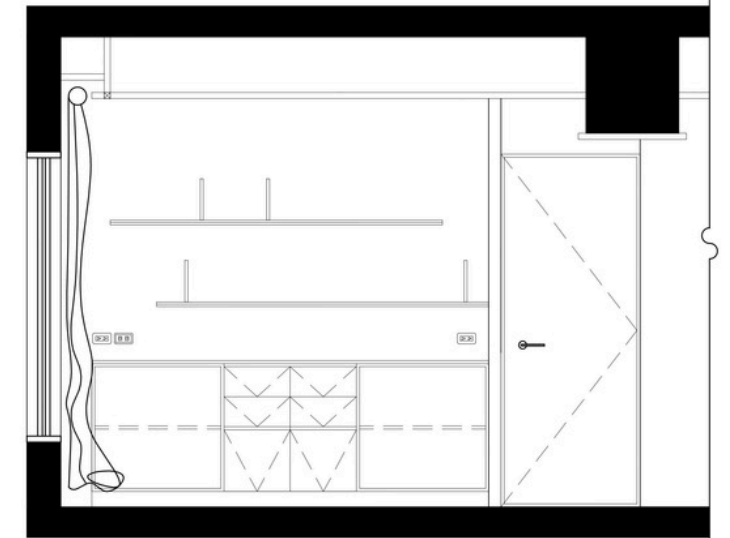
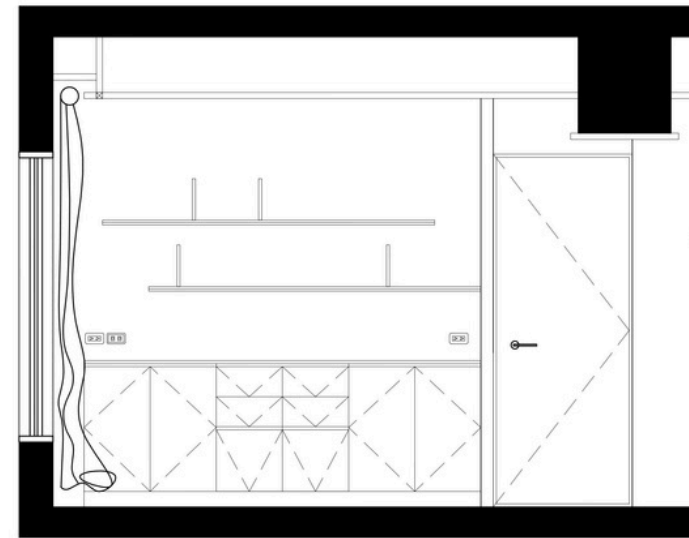
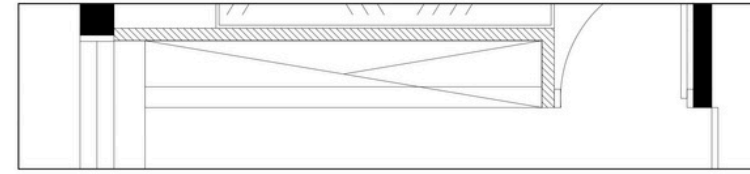
設計說明

客廳以奢石電視牆搭配低調木質電視櫃，沉穩紋理成為視覺核心，柔和布織沙發與圓几平衡石材張力。天花導入鏡面處理，消隱結構樑體並放大空間尺度

The living room is anchored by a statement luxury stone TV wall paired with understated wooden cabinetry, where rich veining becomes the visual focal point. Soft upholstered sofas and a round coffee table temper the stone's presence. A mirrored ceiling treatment subtly conceals structural beams while visually expanding the spatial volume.



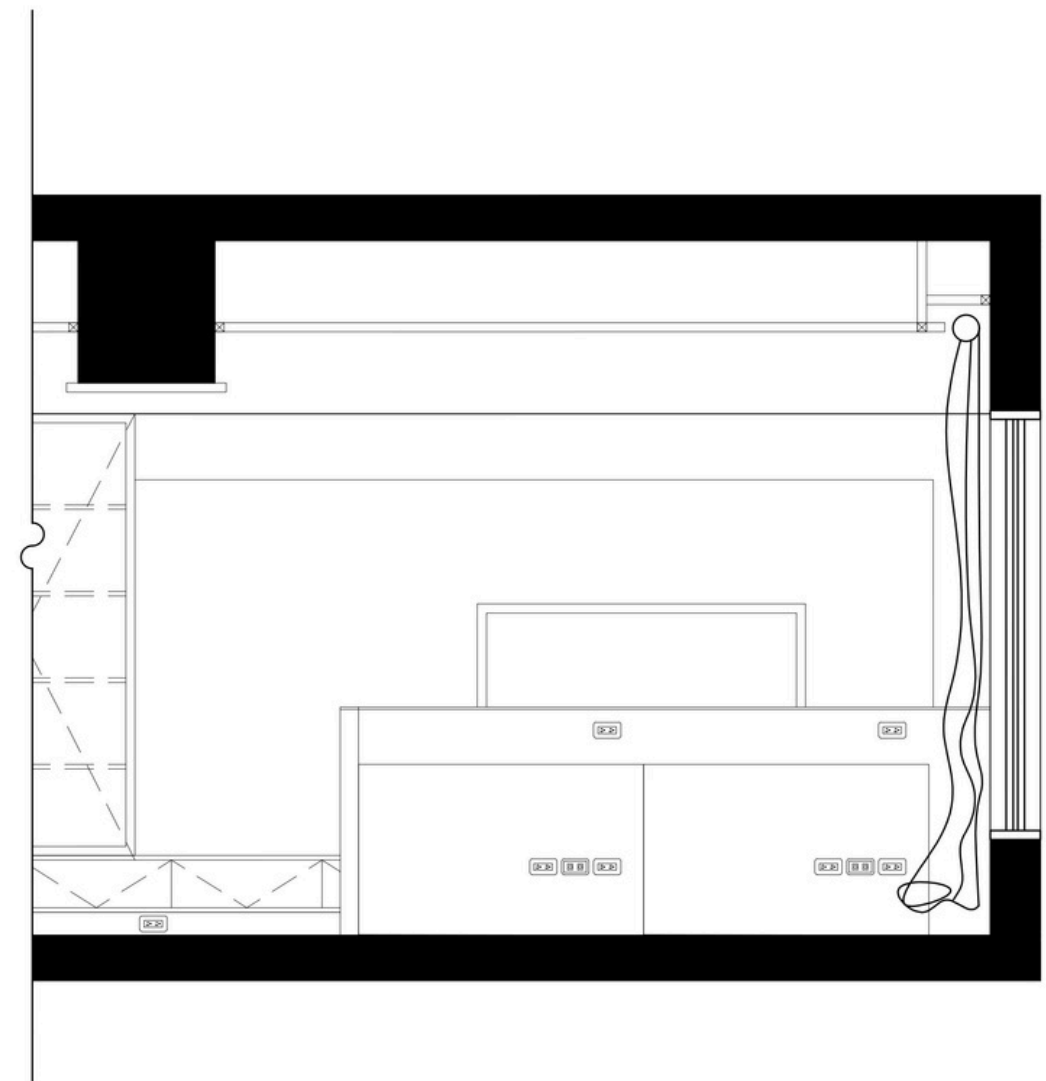
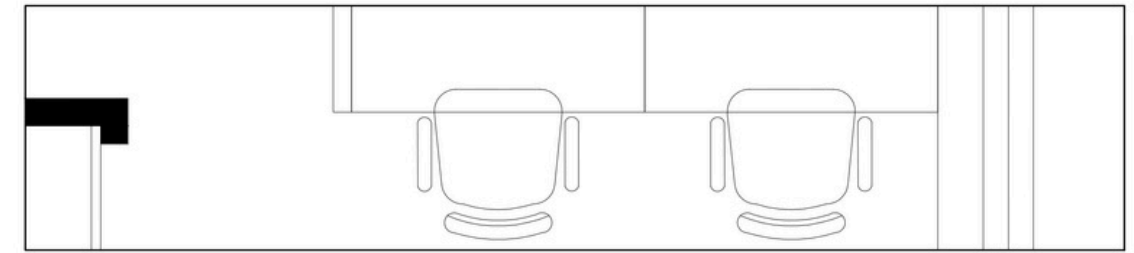




設計說明

半開放式書房以矮牆整合工作檯面，結合層架書牆，在開放與專注之間取得恰到好處的界線。

The semi-open study on the right is defined by a low partition that seamlessly integrates a built-in work surface, paired with layered open shelving. This composition establishes a carefully calibrated boundary, balancing spatial openness with the focus required for work.





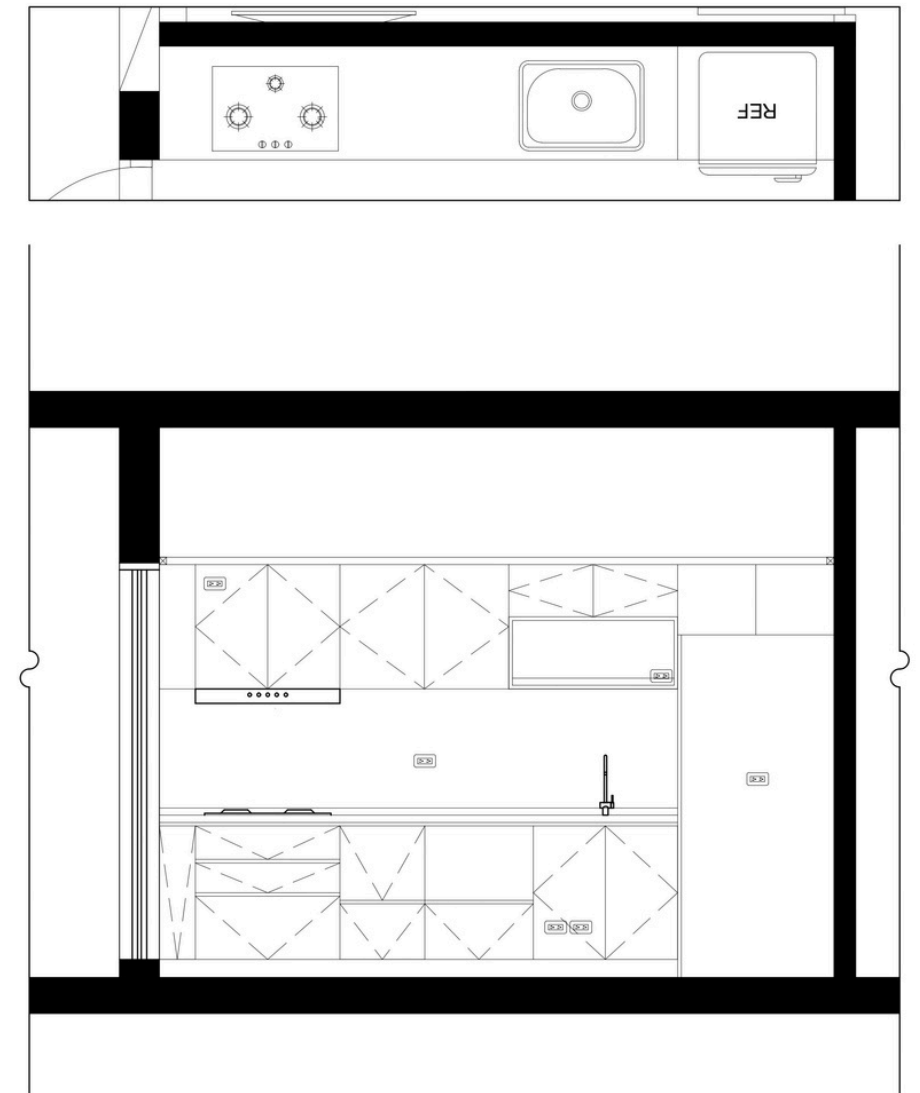
設計說明

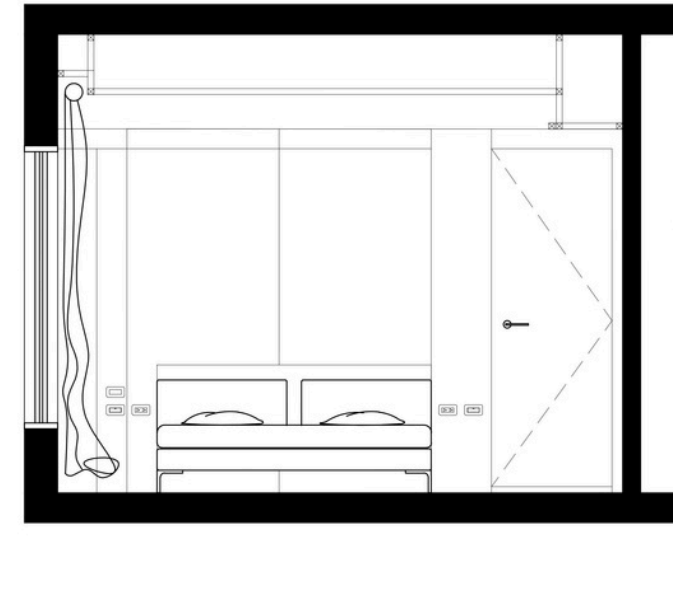
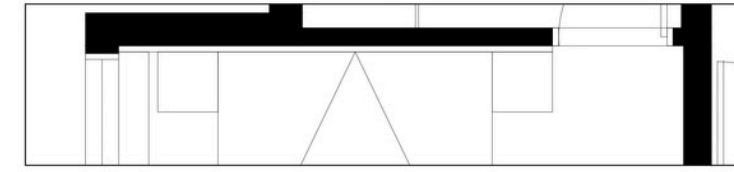
運用黑白灰三色系構建出俐落的層次感。霧面純白櫃體大面積鋪陳，搭配黑色的把手框架與龍頭，形成強烈的視覺對比。

右側則巧妙置入銀色鏡面冰箱，其反射特性不僅消弭了大型家電的沉重感，更在虛實之間延展了空間深處的視覺層次。天花板選用溫潤的深色木質調，平衡了冷色調的清冷，為洗鍊的烹飪場域注入一抹生活的純粹暖意。

A sleek, layered composition unfolds in a refined palette of black, white, and gray. Matte white cabinetry dominates the space, contrasted sharply by black hardware and faucet details.

On the right, a mirrored silver fridge subtly integrates into the layout, its reflective surface lightening the presence of the appliance while amplifying spatial depth. Overhead, a warm, dark wood ceiling offsets the cool tones, introducing a quiet, tactile warmth that elevates the kitchen into a space of understated elegance.





設計說明

以低調而精緻的品味為題，讓厚實的繃布背牆奠定視覺重心，側邊搭配溫潤的直紋木飾面，軟硬材質的對比不僅強化視覺層次，也帶來細膩的觸覺感受。簡潔的幾何分割與深沉色調相互呼應，在極簡語彙中，營造出現代人文生活的靜謐氛圍。

The space exudes understated sophistication. A substantial black upholstered feature wall anchors the visual composition, complemented by warm, linear wood paneling on the side. The contrast between soft and hard materials not only heightens visual interest but also introduces a subtle tactile richness. Clean geometric divisions harmonize with deep, resonant tones, creating a minimalist vocabulary that frames a serene, contemporary human-centric living environment.



設計說明

簡鍊的灰白色鋪陳衣櫃主體，與沉穩的深褐色木質梳妝區交織出豐富的虛實對比。透過活動式門片與電視的整合手法，極大化空間效能，搭配梳妝區整面落地鏡，更凸顯空間的深度與層次。

A minimalist gray-and-white palette defines the wardrobe, harmonizing with the deep brown wood of the vanity to create a rich interplay of solid and void. Sliding doors seamlessly integrate the TV, maximizing spatial efficiency, while the full-height mirror at the vanity amplifies the sense of depth throughout the room.

