

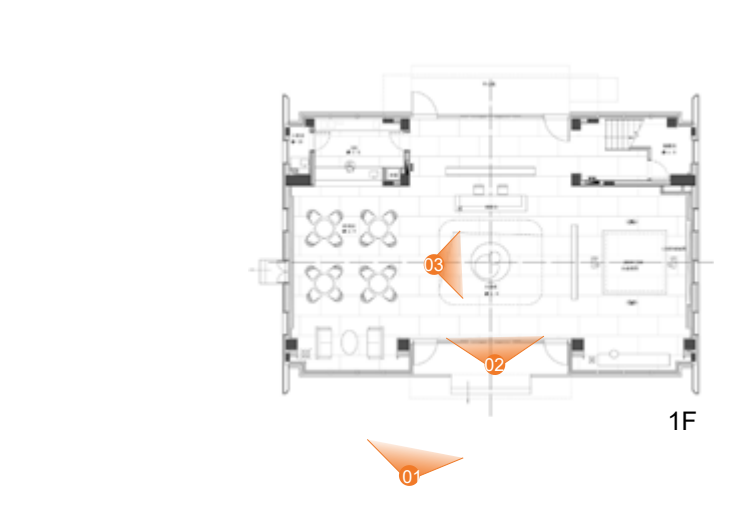
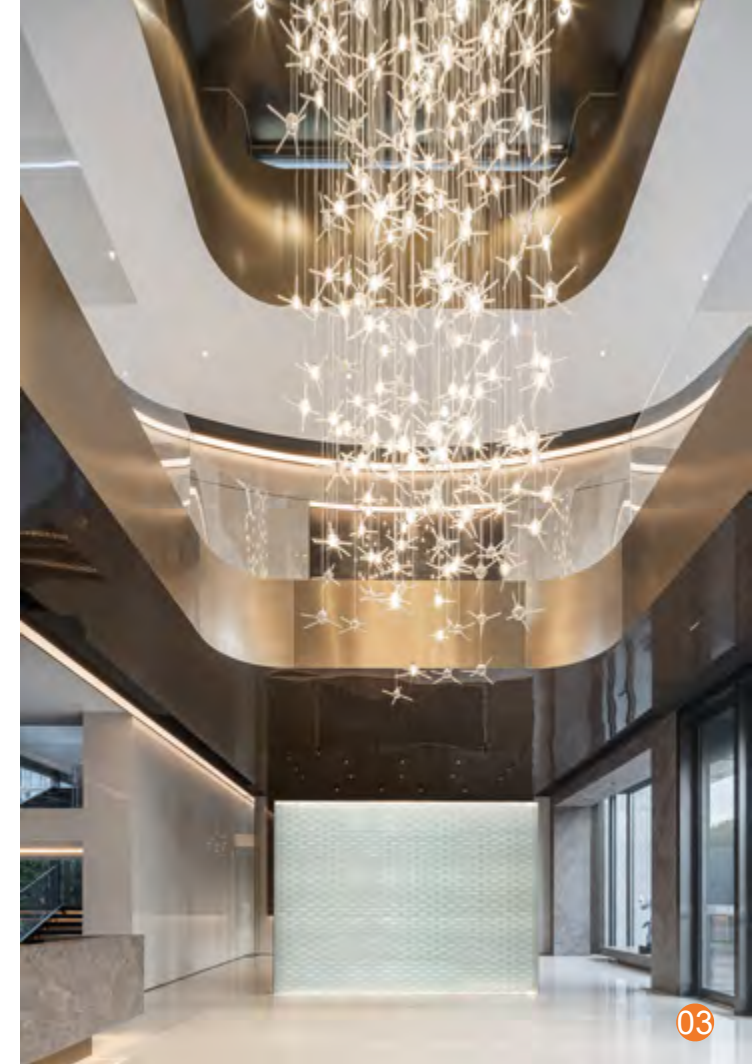


STAR FALL

Project explanation

This project is the entrance lobby of a residential community, conceived as an immersive spatial narrative that frames the first experience of home.





RECEPTION



CONSULTATION



LOUNGE



Within the double-height volume, **a cascading chandelier composed of star-like lights forms a strong visual focal point and a distinctive spatial identity.** Organized around this core, arrival, reception, and communal areas unfold in a fluid and continuous sequence.

Unlike conventional lobbies, the design transforms arrival into an emotional experience—using light, reflection, and spatial layering to evoke a sense of belonging and create a deep connection between residents and the community.

Inspiration

1 Spatial Order

The overall architectural space is based on the concept of “a circle within a square.” Within a balanced and rational rectilinear layout, the central circular hall acts as the spatial core, generating a four-directional symmetrical order. The circle is not only an expression of geometric aesthetics, but also symbolizes integration, communication, and belonging in community life, creating a warm, fluid, and well-balanced spatial experience.



Inspiration

2 Artistic Inspiration - Starlight

The main visual inspiration comes from the natural image of starlight. A custom-designed artistic chandelier composed of hundreds of luminous points is suspended in the central hall, resembling converging starlight and flowing illumination, creating a ceremonial visual focus.

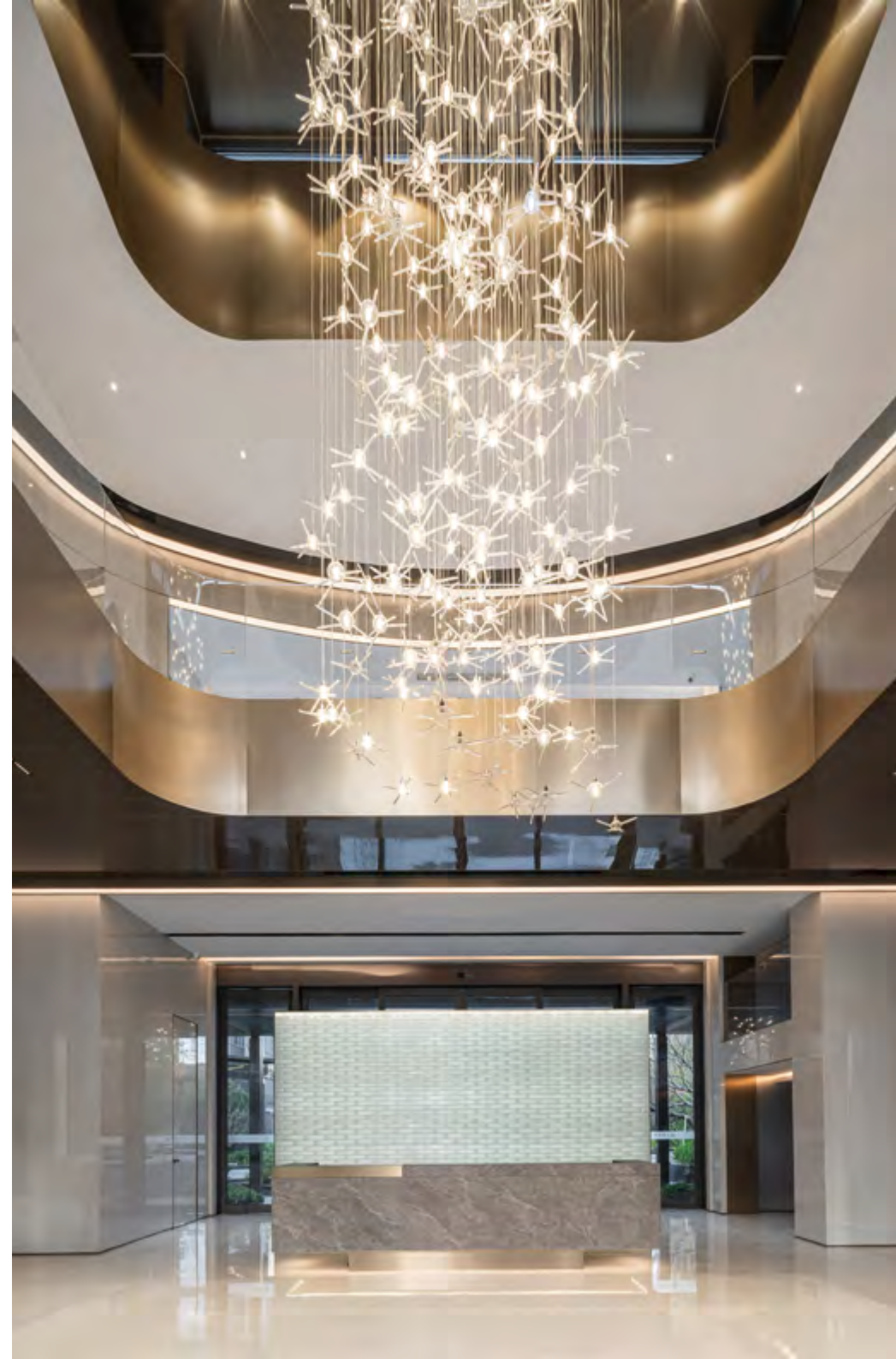
The lighting not only shapes the atmosphere, but also symbolizes connection and warmth among people in the future community, giving the sales gallery both artistic character and spiritual significance.



starlight



starry sky

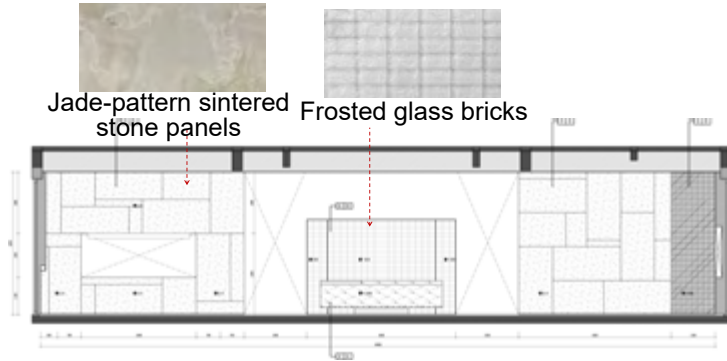


Realization Technology

The project adopts a spatial strategy combining axial organization with a central core, creating a clear and ceremonial circulation. Layered open and semi-private spaces allow seamless transitions between movement, pause, and interaction.

Material selection emphasizes light, shadow, and texture, **integrating stone, wood veneer, metal, and glass to create a refined and layered spatial experience.**

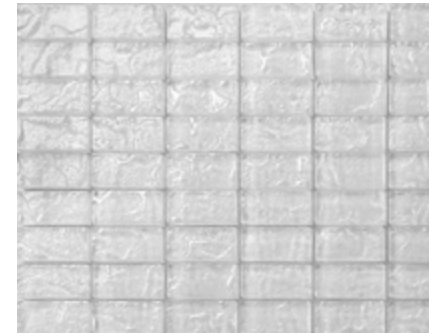
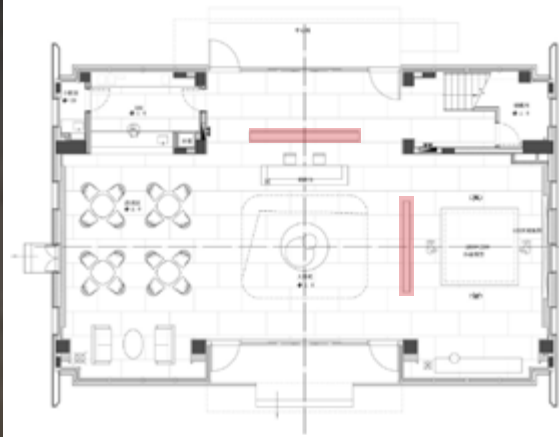
The lighting system employs a multi-level strategy, combining the central artistic chandelier with indirect and accent lighting, allowing the space to present soft and dynamic variations of light throughout the day.





Interaction

Upon entering the lobby, visitors are first drawn to the central circular void, where the cascading chandelier establishes a strong visual anchor. From this core, the space expands outward, forming a clear and intuitive circulation. As people move through the space, they naturally experience different zones for arrival, pause, interaction, and rest.



Frosted glass bricks

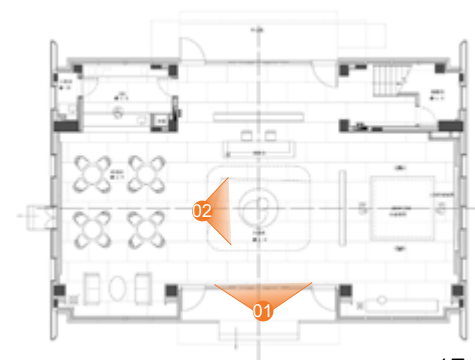
Technical properties

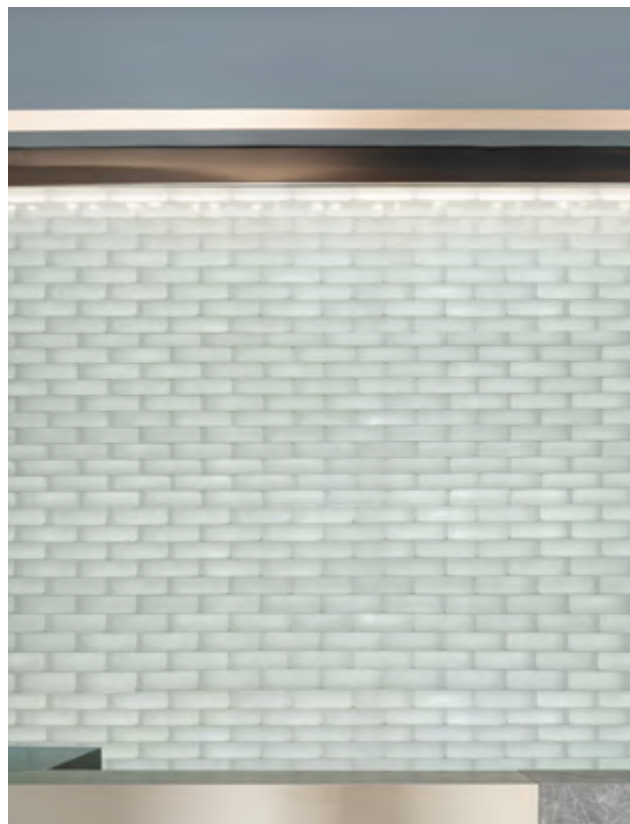
Frosted glass bricks :

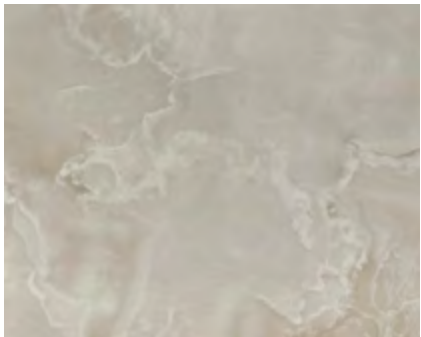
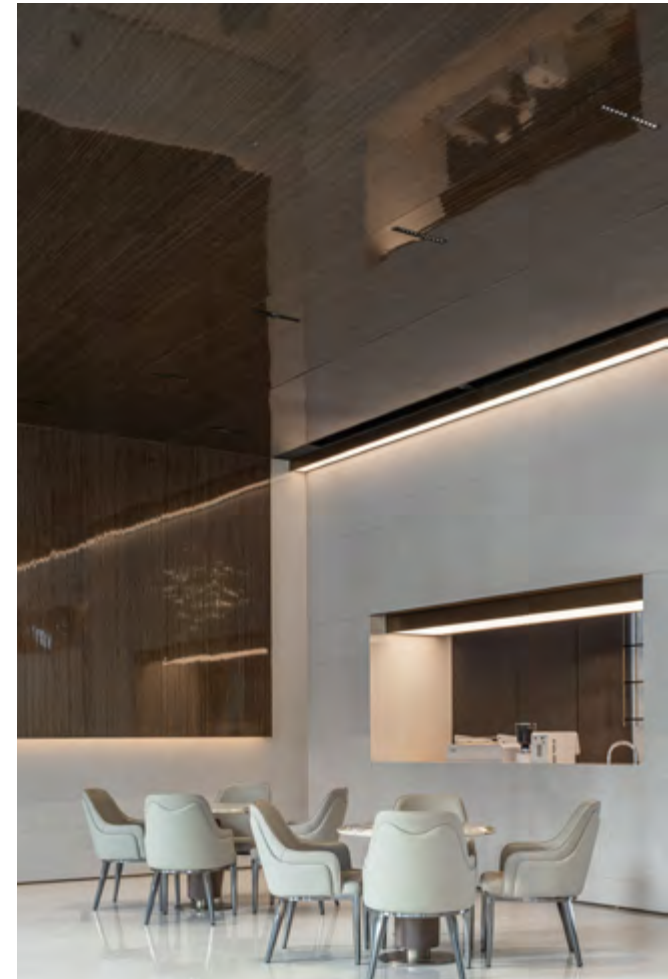
(50 × 100 × 200 mm)

- a. translucent but not transparent, anti-glare
- b. resistant to temperatures from -50°C to 300°C without deformation, Class A1 non-combustible material
- c. can integrate LED strips to create soft lighting effects







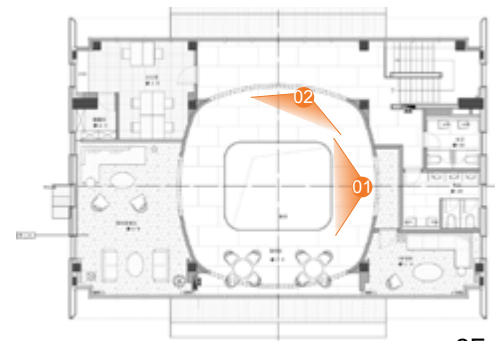


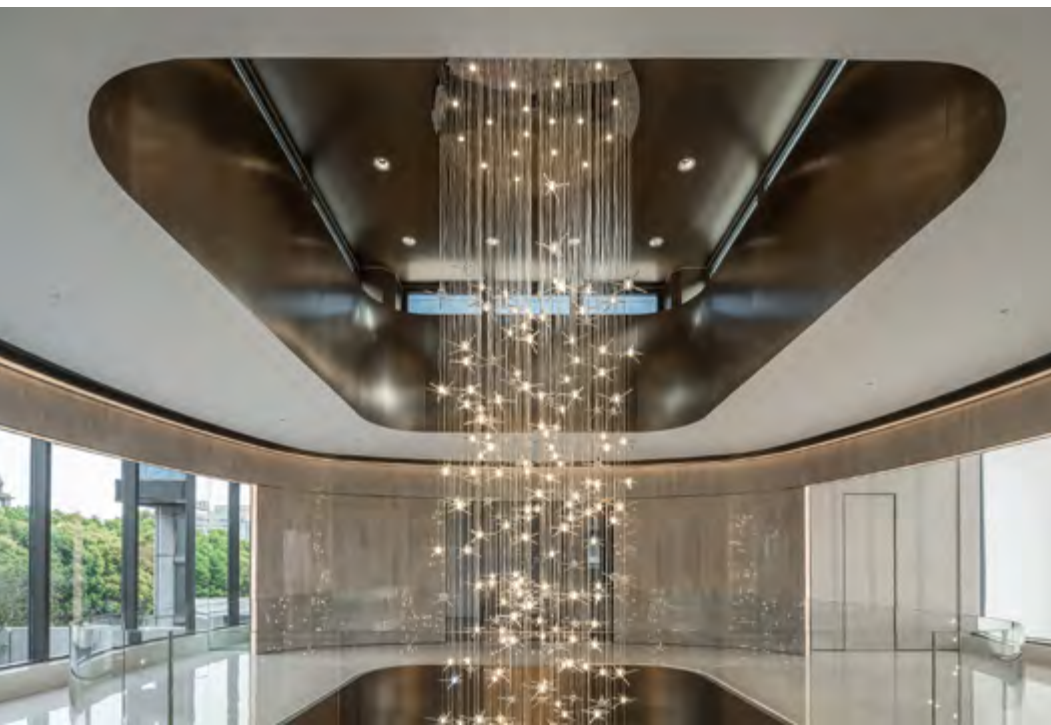
Jade-pattern sintered stone panels :
(1600 × 3200 × 8 mm)

- a. featuring natural jade-like textures and snowflake patterns
- b. semi-translucent, scratch-resistant and stain-resistant, enhancing the artistic quality of the space

Jade-pattern sintered stone panels





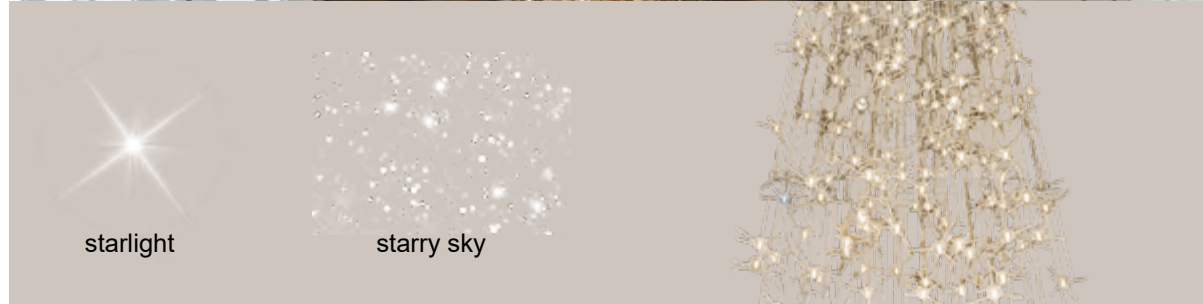


High-gloss light-colored resin panels

High-gloss light-colored resin panels :

(1220 x 2440 mm / 3000 x 3 mm)

- a. smooth and delicate surface, waterproof, moisture-resistant
- b. resistant to acids, alkalis, alcohol, and cleaning agents
- c. UV-resistant, suitable for both interior and exterior use



starlight

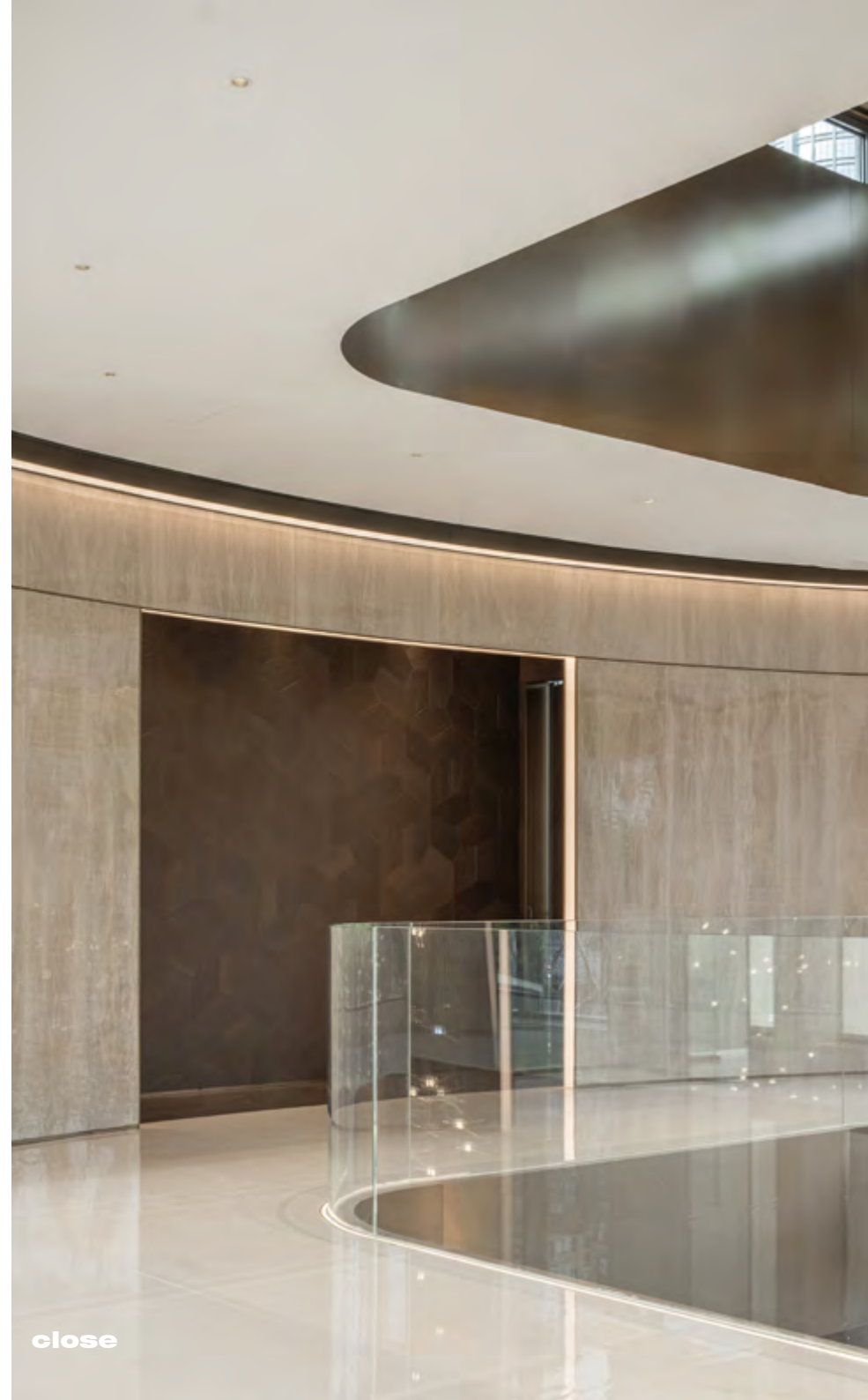
starry sky



artistic chandelier



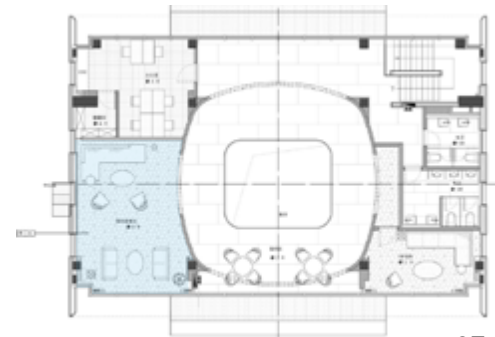
open



close



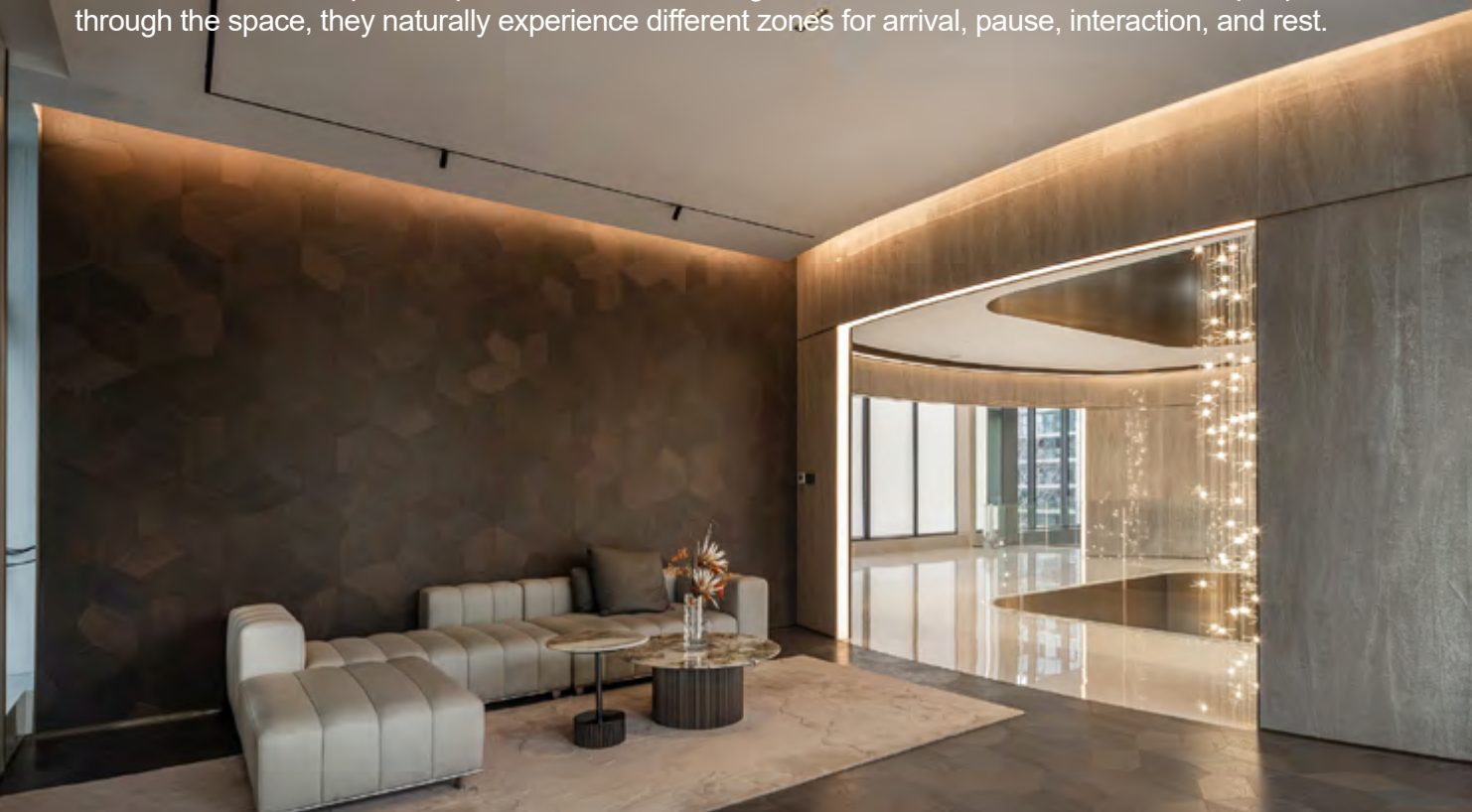
Parquet Flooring





Research challenge

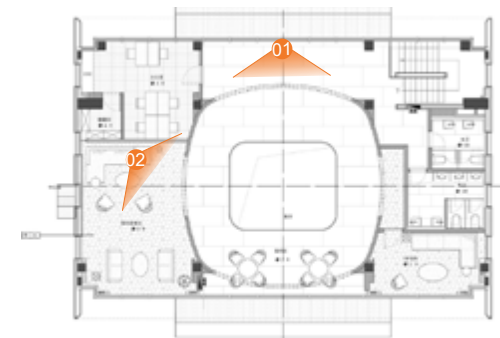
Upon entering the lobby, visitors are first drawn to the central circular void, where the cascading chandelier establishes a strong visual anchor. From this core, the space expands outward, forming a clear and intuitive circulation. As people move through the space, they naturally experience different zones for arrival, pause, interaction, and rest.

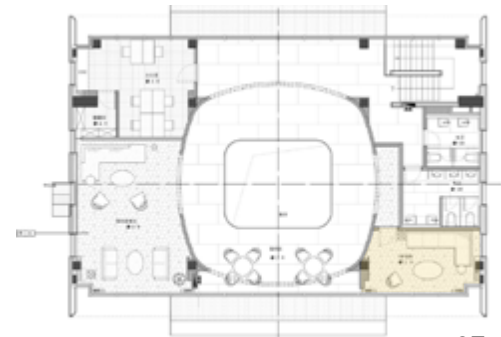




In addition, customized materials posed constraints in production cycles and construction processes, requiring continuous optimization between time, cost, and quality.

Through multidisciplinary collaboration and iterative refinement, the project successfully achieved a balance between design expression, user experience, and technical feasibility.





2F

