

Cityscape Development Limited logo and name in Chinese and English.

Cityscape Development Limited logo and name in Chinese and English, mirrored on the floor.

Flowing Art



PROJECT EXPLANATION

Purpose:

The project aims to design a corporate headquarters that integrates functionality, innovation, and artistic expression.

By blending smart design with artistic elements, it enhances employee efficiency, strengthens the company's image, and offers a unique experience for clients and visitors, creating a flexible and multifunctional workspace.



Functional Layout:

The space is divided into four key functional areas: a. Lobby b. Meeting Rooms c. Workspaces d. Executive Offices

a. Lobby

Represents the company's image and serves as a welcoming and waiting area.



b. Meeting Rooms

Designed for team collaboration, discussions, and business meetings.



c. Workspaces

Provides an efficient and open environment for daily operations.



d. Executive Offices

Combines privacy and comfort to support leadership decision-making.



INSPIRATION

Concept: "Flowing Art"

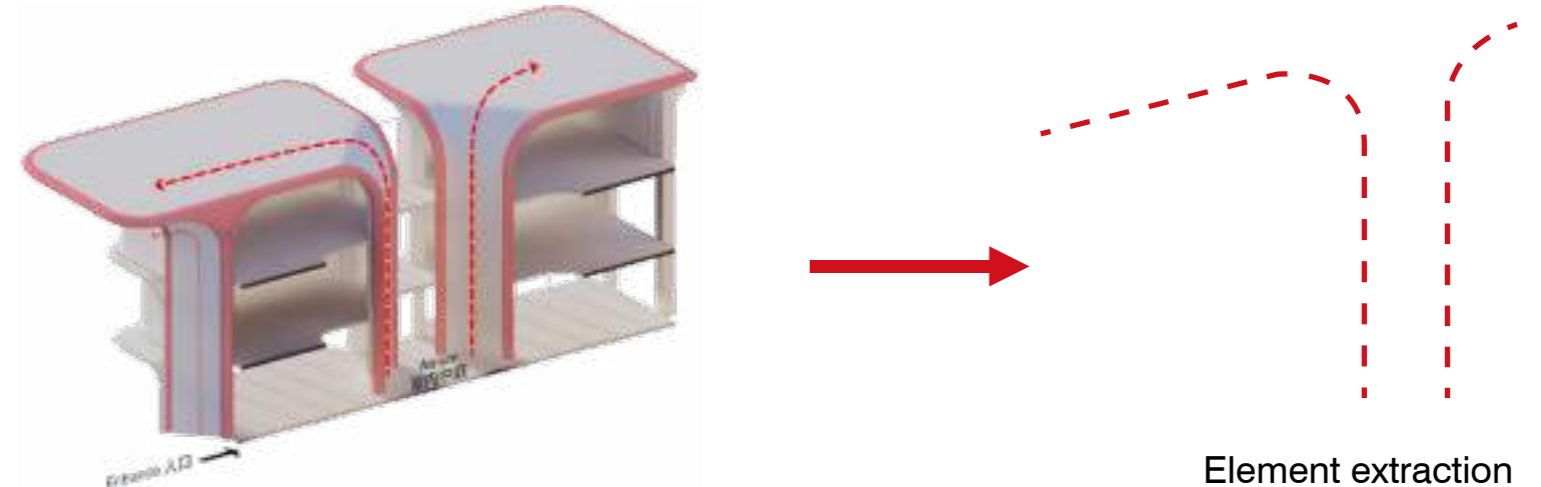
The design draws inspiration from the fusion of architecture and art, using fluid curves to showcase the harmony of technology and creativity.



The Architectural design by Kohn Pedersen Fox Associates (KPF)

1-Architectural Language

The design draws inspiration from the fusion of architecture and art, using fluid curves to showcase the harmony of technology and creativity.

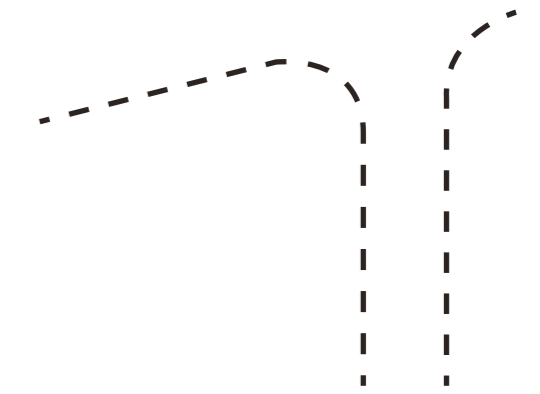


Element extraction



2-Artistic Office Space

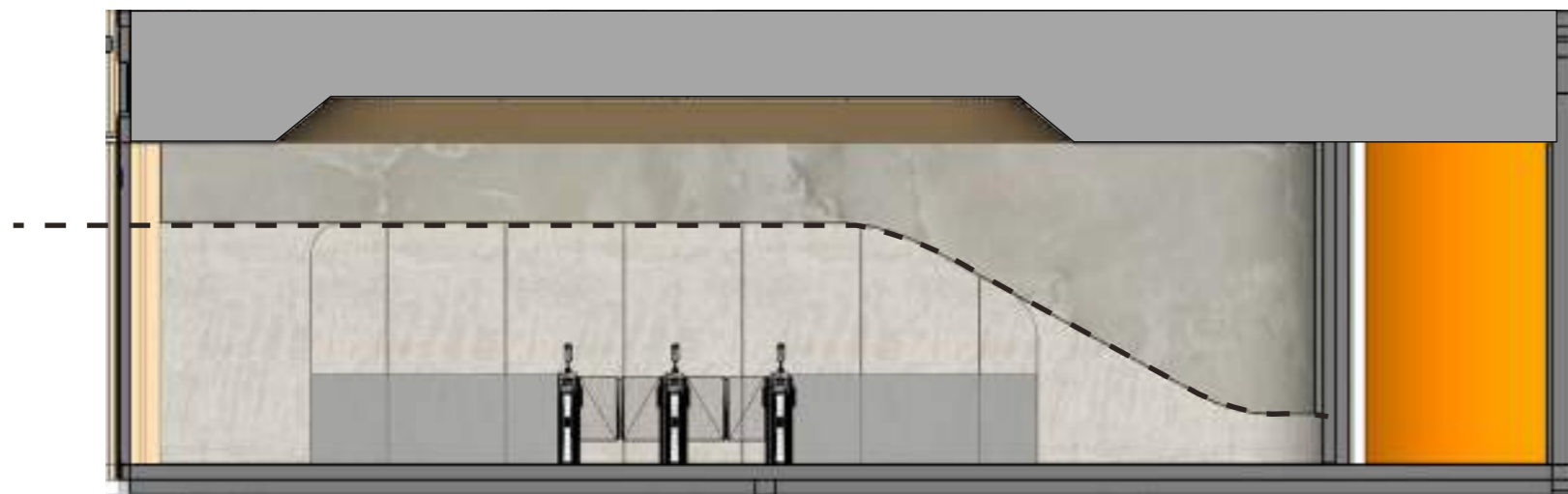
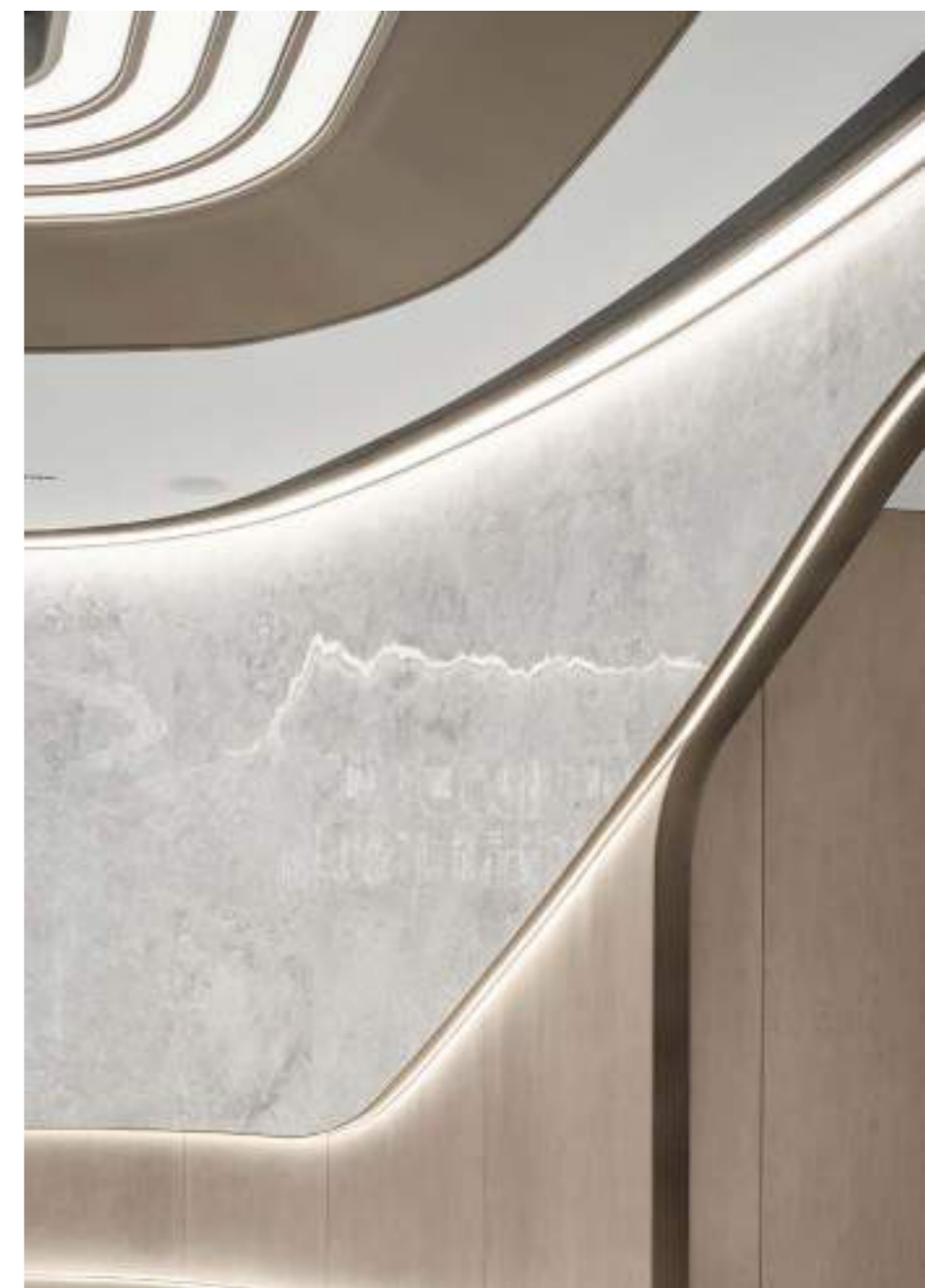
The integration of artistic elements redefines the conventional office environment, enhancing spatial experience.

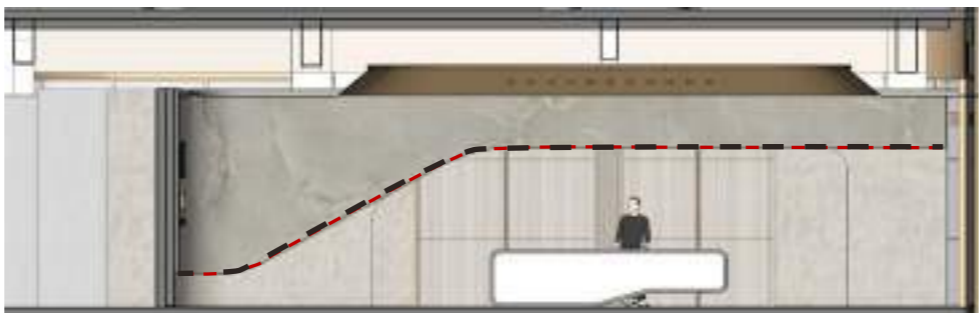
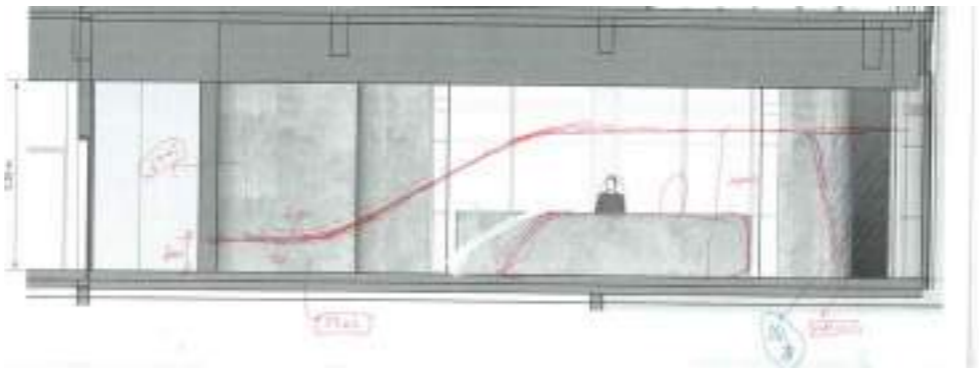


1-Architectural Language

Soft, curved walls create seamless transitions, eliminating rigid partitions and blurring traditional spatial boundaries. This approach enhances continuity and openness in public areas, fostering a dynamic and interactive workspace that stimulates creativity and collaboration.









2-Artistic Office Space

By deeply merging art and culture, **the design creates a workspace that is both aesthetically refined and rich in cultural significance, infusing the office with inspiration and vitality.**



MATERIALS

The project adheres to the principles of environmental protection and sustainability, using WPC bamboo charcoal wood metal panels and WPC bamboo charcoal wood boards, which offer high strength, stability, and eco-friendliness.

The bamboo charcoal wood material is formaldehyde-free, effectively purifying the air and eliminating odors, in line with carbon neutrality principles.

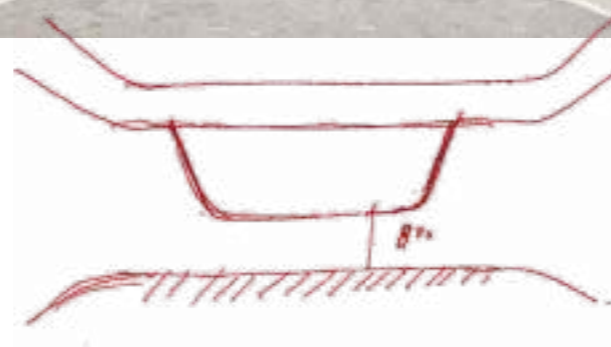
This material supports direct installation, reducing construction time, and features functions such as grooving and edge folding to address closure issues.



WPC bamboo charcoal wood metal panels







To achieve sustainable design, material selection focuses on durability and environmental friendliness.

Materials such as shadow wood veneer, ripple-patterned jade stone, and antique bronze stainless steel combine aesthetics with durability, reducing resource consumption.



antique bronze stainless steel



shadow wood veneer



ripple-patterned jade stone



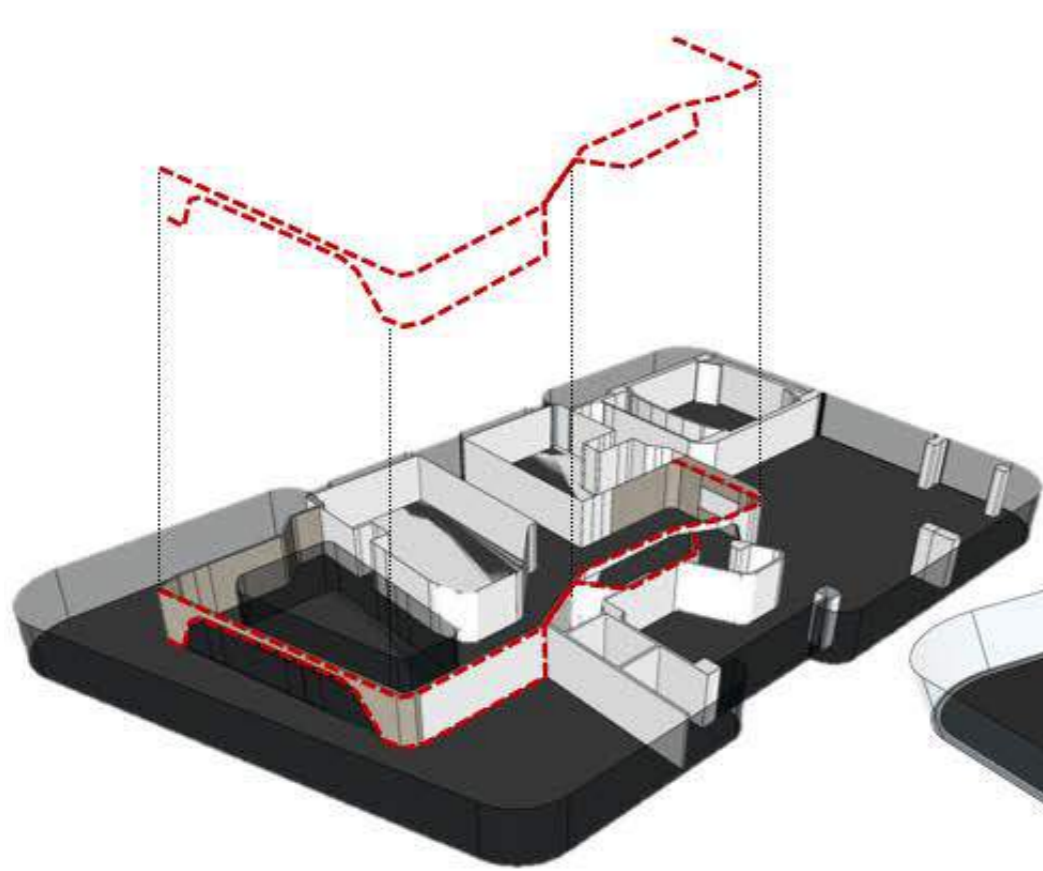
TECHNICAL PROPERTIES

The maximum size of the WPC bamboo charcoal wood wall panel is 1200mm x 8mm x 6000mm.

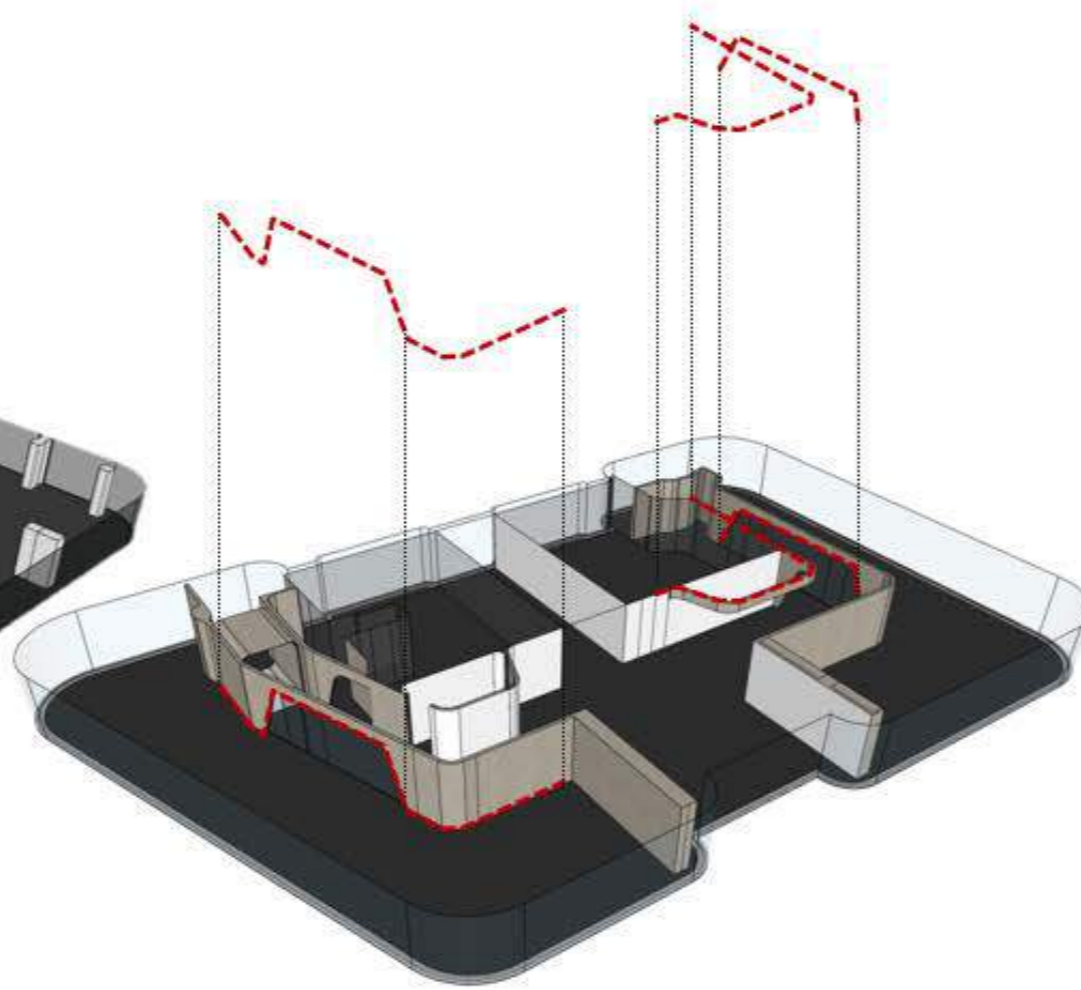
The WPC bamboo charcoal wood fiberboard features eco-friendliness, ease of installation, fire and water resistance, and excellent sound insulation.



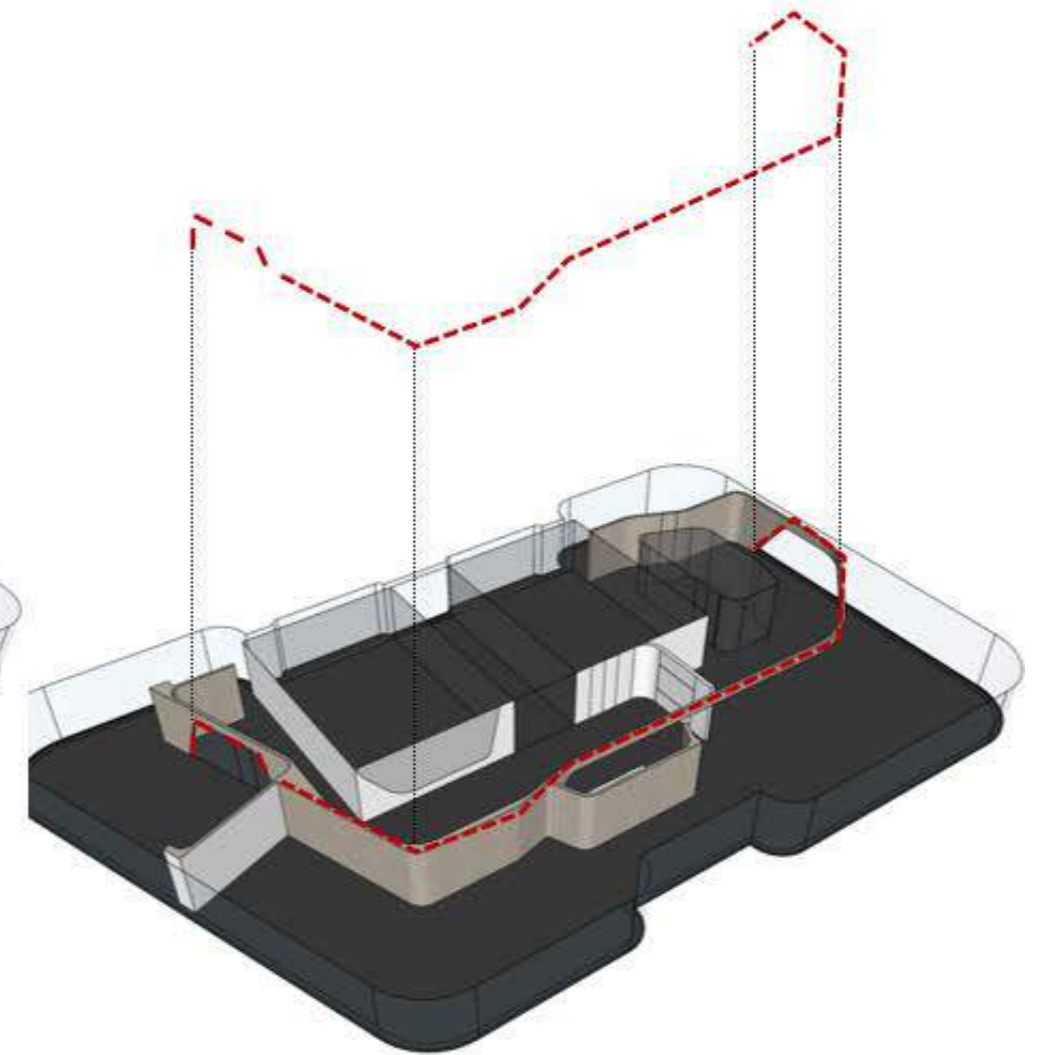
- It meets the EU E1 formaldehyde standard, preventing harmful formaldehyde emissions. Installation can be completed directly on bare walls or wooden battens, making it simple to operate.
- It has passed the EU Class C fire resistance test, with excellent waterproof performance, and the surface PVC film is easy to clean.
- The sound insulation effect can reach up to 29 decibels, offering a variety of styles, high flexibility, and the ability to be directly bent, simplifying construction.



2F



3F



4F

INTERACTION:

This design project creates an interactive and flexible office space that blends art and design to break away from traditional office environments.

The layout and furniture can be adjusted according to needs, encouraging interaction and collaboration between employees and visitors.



Office furniture, like the butterfly desk, adopts a flexible design and uses sustainable materials such as wood and recyclable plastics, allowing for future space adjustments and reconfigurations to meet the evolving demands of the workplace.

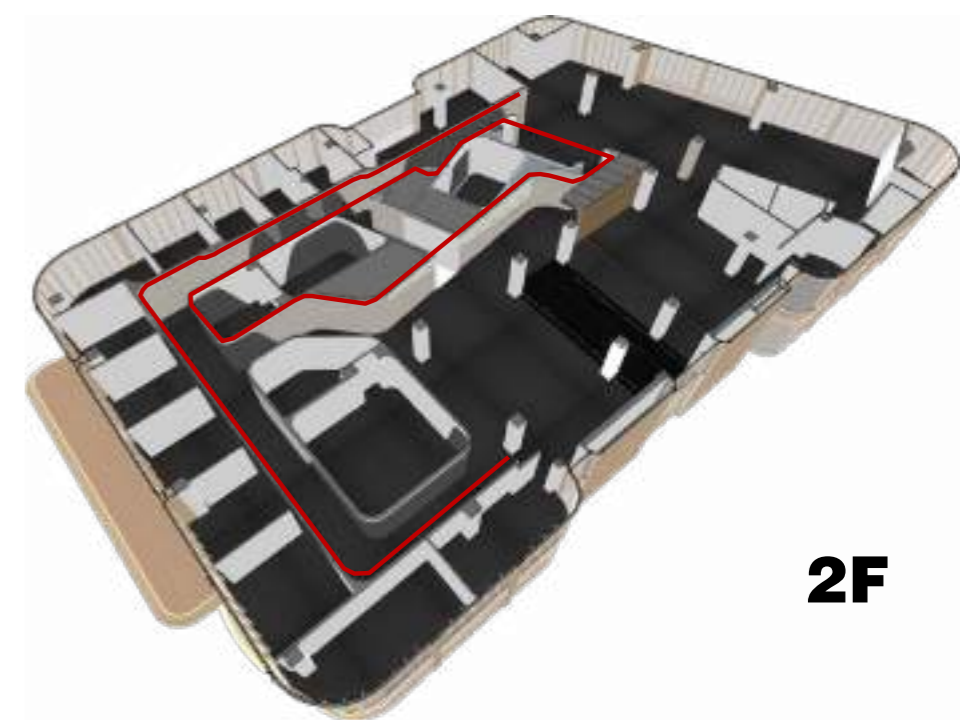






Artworks and flowing curved designs blur the boundaries of traditional offices, creating an open and innovative atmosphere.

Through flexibility and sustainable design, the space adapts to changing needs over time, stimulating creativity, enhancing team collaboration, and improving work efficiency, far surpassing the limitations of traditional fixed spaces.



2F

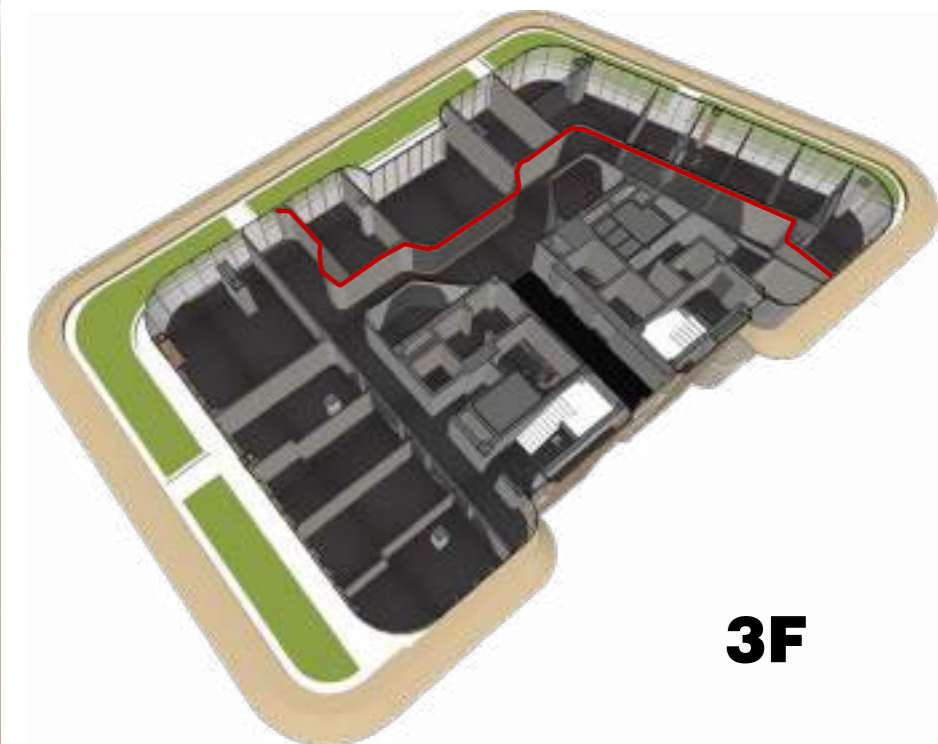












3F

RESEARCH ABSTRACT:

On the business level, it helps enterprises enhance work efficiency and innovation capabilities by boosting employees' creativity and collaboration, thereby strengthening the company's competitiveness.





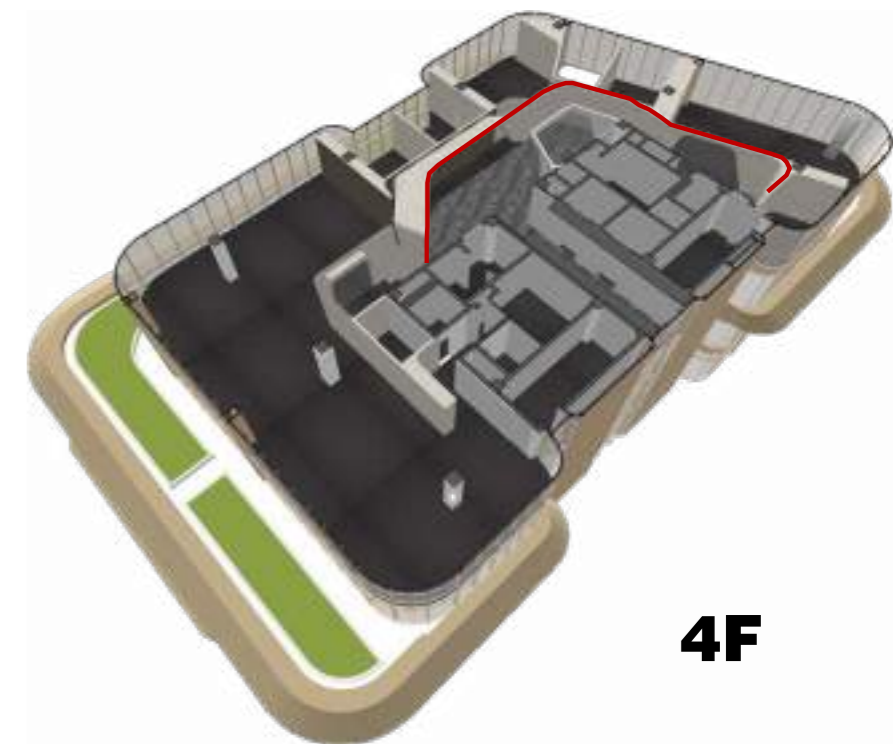
On the design level, this flexible, interactive, and art-integrated office space model breaks through traditional design thinking, establishes new design standards, and demonstrates how innovative design can improve work experience and spatial value, setting a benchmark for future office environments.



RESEARCH CHALLENGE:

In this design project, the biggest challenge was to break through the limitations of traditional office spaces and create an environment that is both artistic and flexible.

Discarded fixed layouts to provide an open and interactive space, while addressing the diverse needs of both employees and visitors. By utilizing the fluidity and inclusivity of curves, we crafted an office space with an artistic atmosphere, integrating original artworks to establish a new realm for modern office environments.



4F

