



FLOW

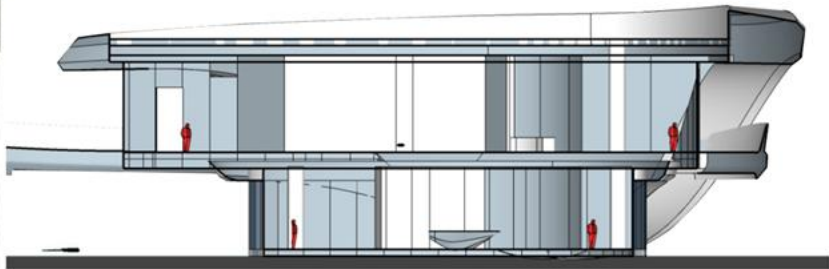


# FLOW CONCEPT

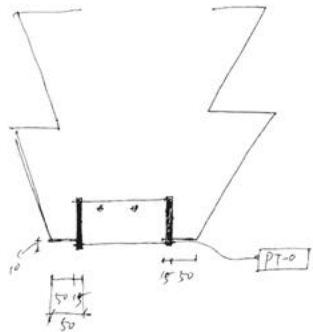


## MEISHAN CALIFORNIA SMART CITY

The project is located in the southern section of Tianfu Avenue in Chengdu. It is a development and exhibition area in the California Smart City. The California Smart City will focus on clean energy as its main industrial chain to create a smart city covering the new and clean generation of information technology. The designer takes the two elements of "water" and "light" as the themes, allowing nature and technology to collide to re-establish the emotional connection between man and nature.



## 04 SPACE



The curved wall resembles the ripples produced by the flow of curved water, which has the energy to form a dynamic vision, creating a "FLUID" spatial form.



## 01 STREAM

Extract  
Simplify



## 02 FLUID



## 03 TEXTURE

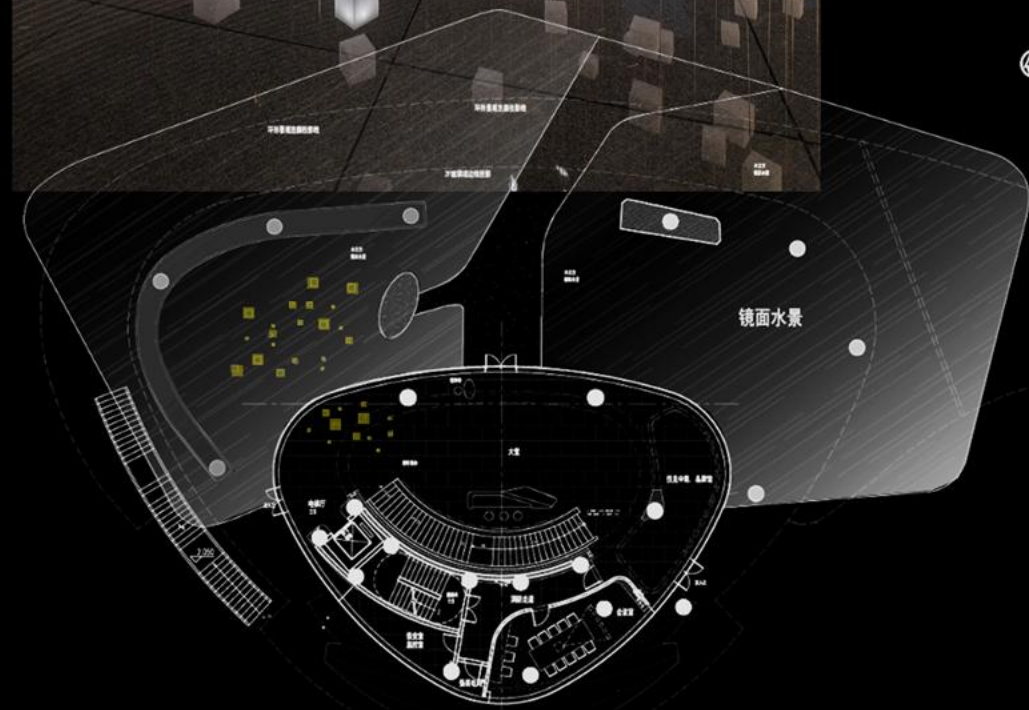




**LOCATION**









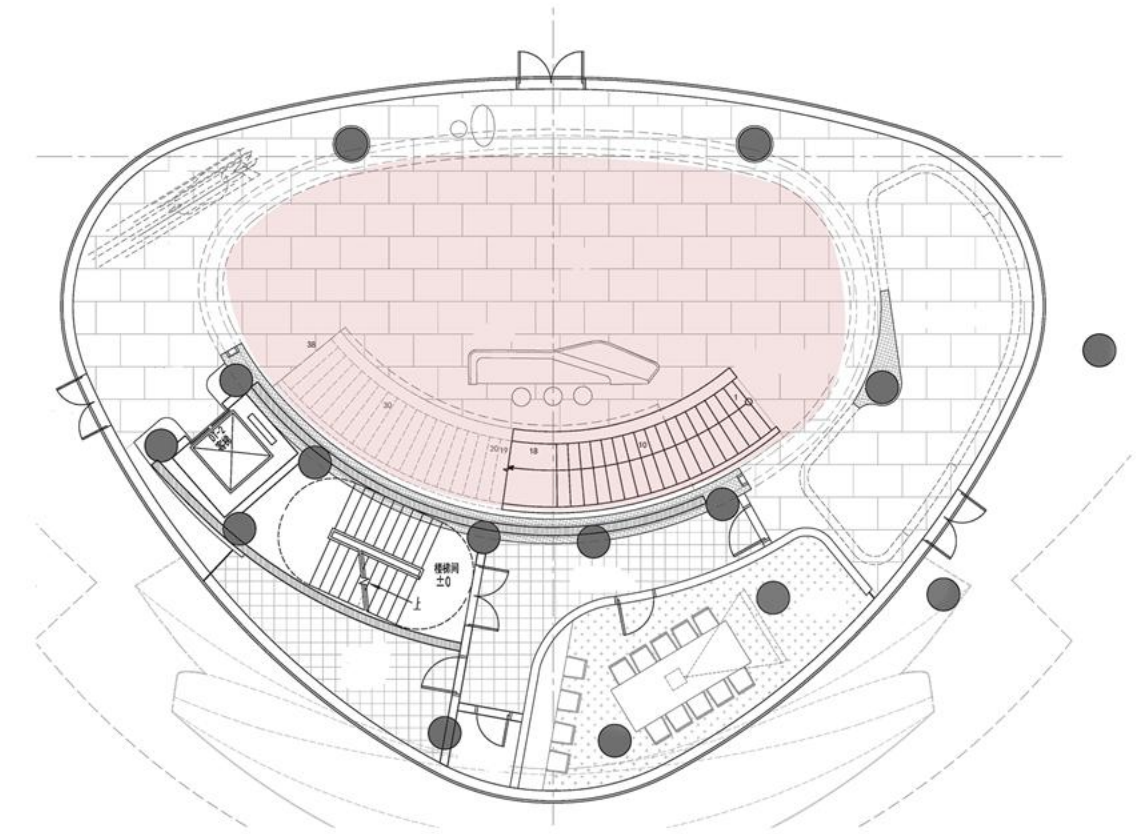


## LIGHT CUBE

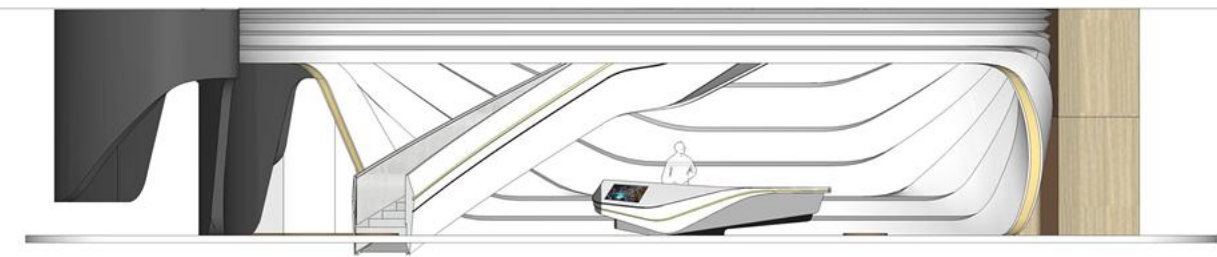
The light cube art installation in front of the entrance of the lobby hangs over the water, staggered high and low. The cube is made of acrylic material and endowed with lighting. The building seems to be floating on the water surface, connected by light cubes, shaping the image of the future city of science and technologies.





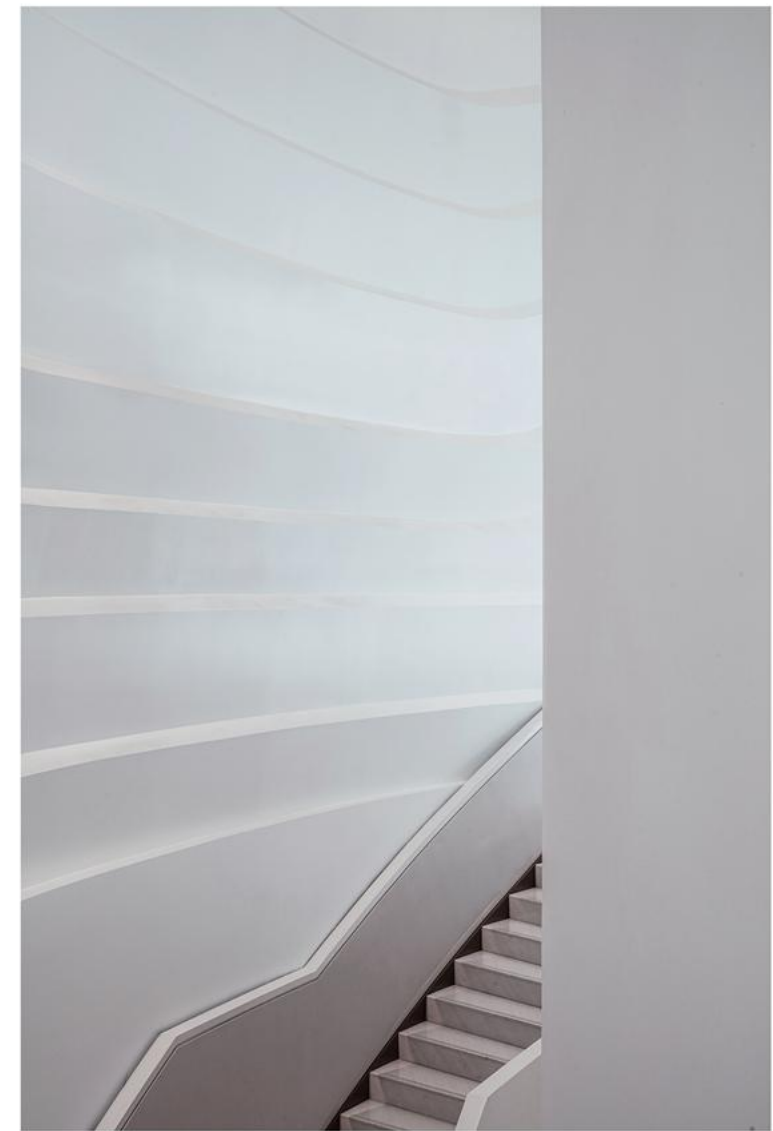


The curved wall resembles the ripples produced by the flow of curved water, which has the energy to form a dynamic vision, creating a "fluid" spatial form.







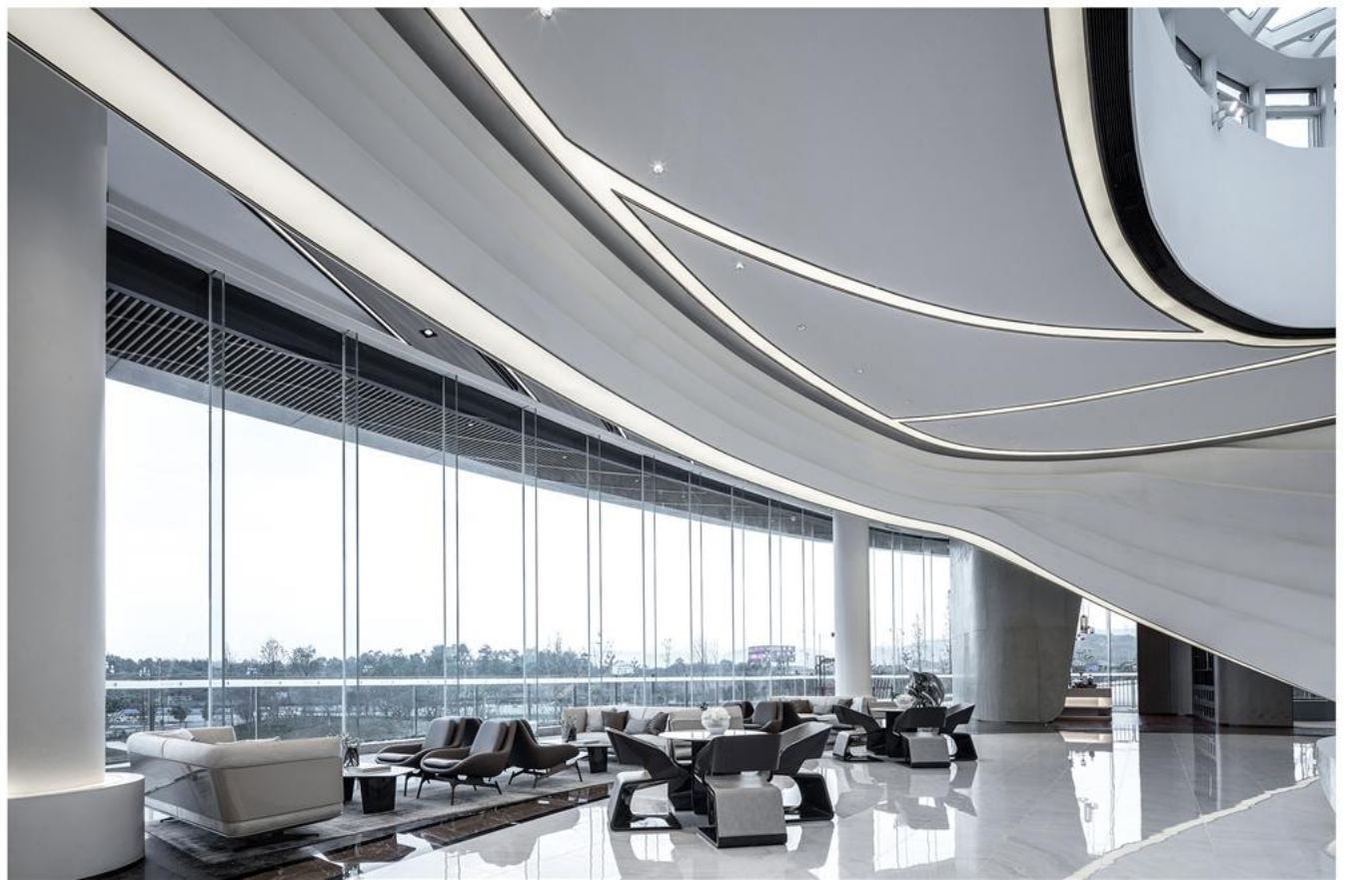


Through the plastic and smooth lines, a continuous facade shape and the continuity of spatial circulation are created. The staircase is hidden in the natural and smooth facade; connecting the upper and lower floors



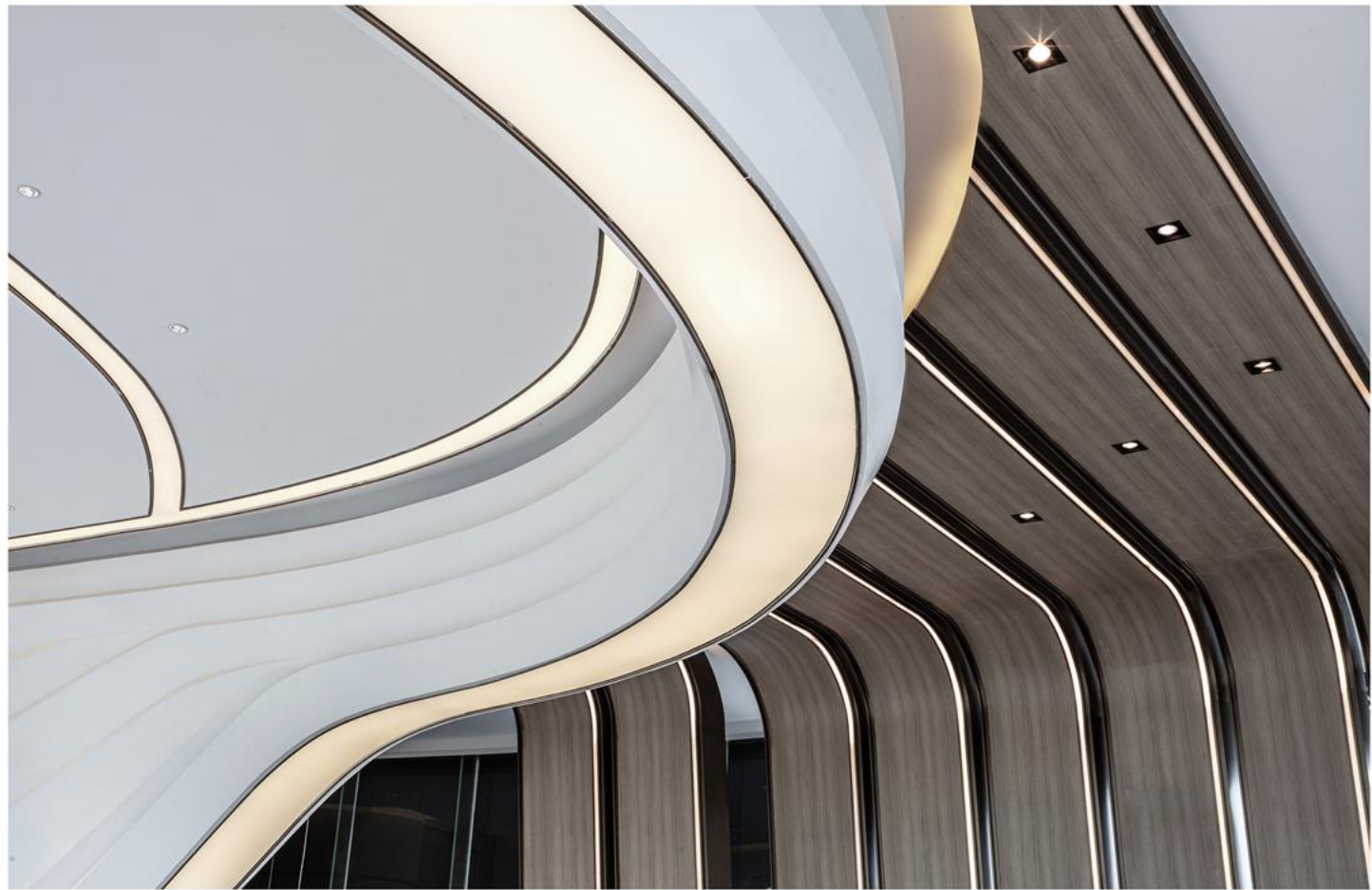
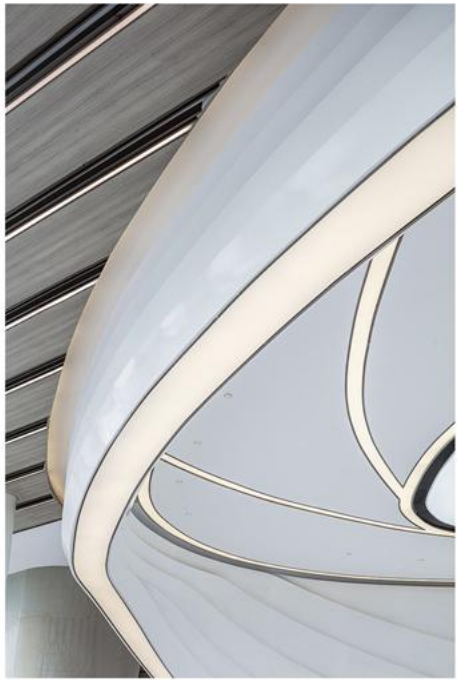




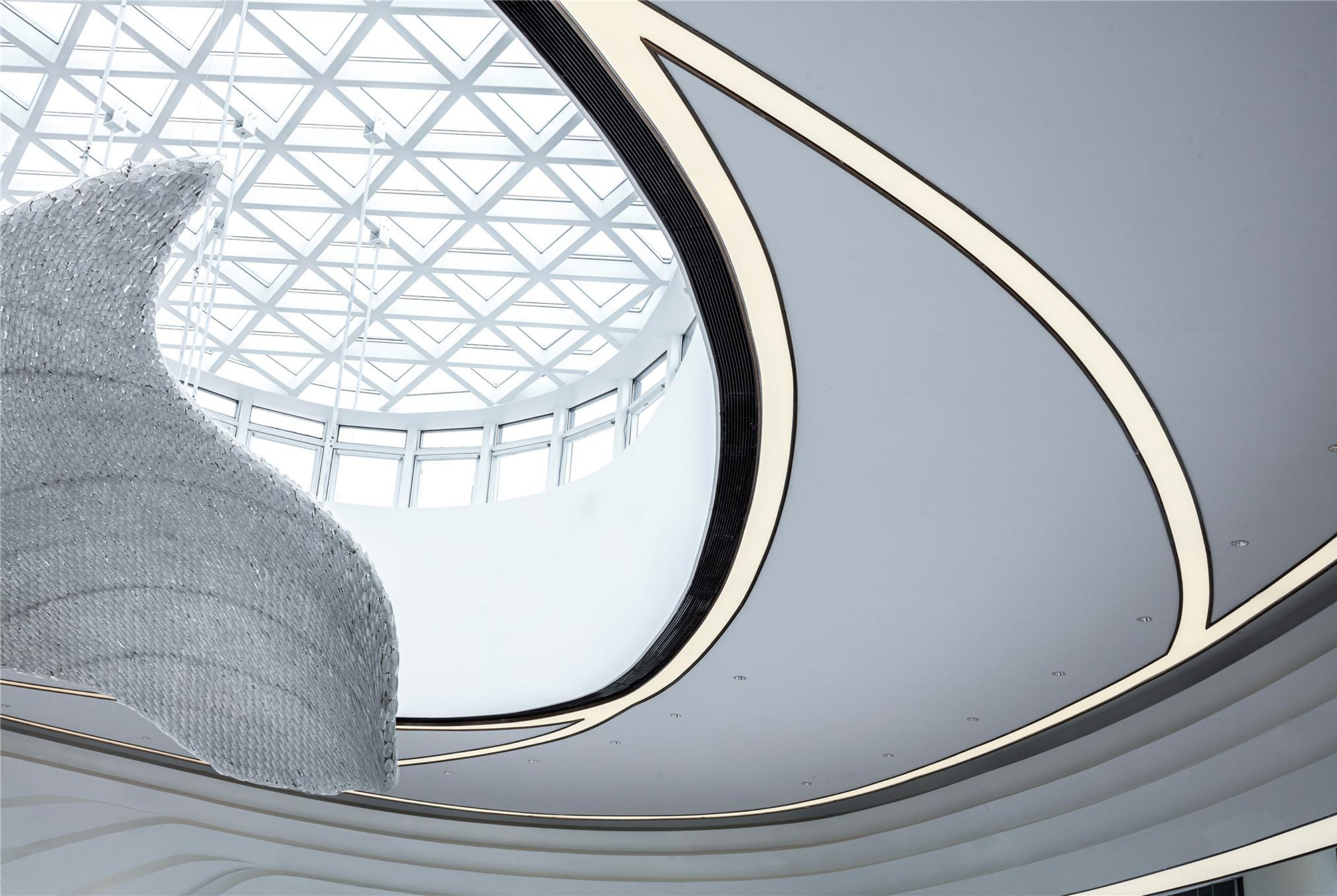


➡ **VIEW**









The curved wall resembles the ripples produced by the flow of curved water, which has the energy to form a dynamic vision, creating a "fluid" spatial form.



