

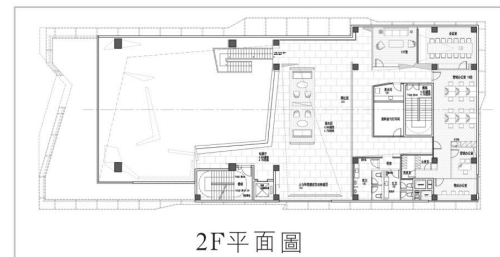
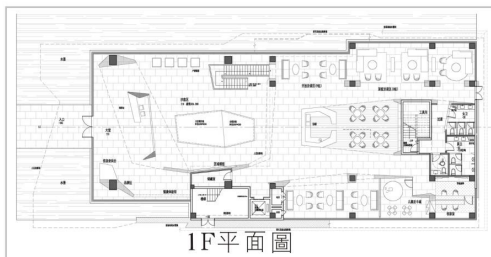
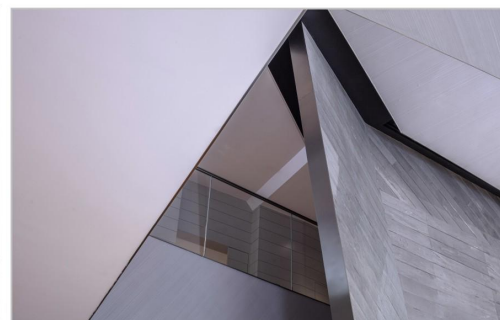
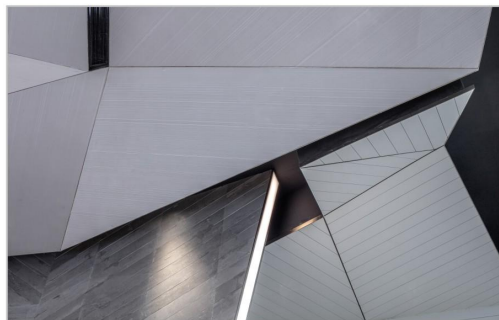
PARK LIGHT

重慶復地[公園和光]

THE MOUNTAIN IS CITY AND THE CITY IS THE MOUNTAIN 01

山即是城 城即是山

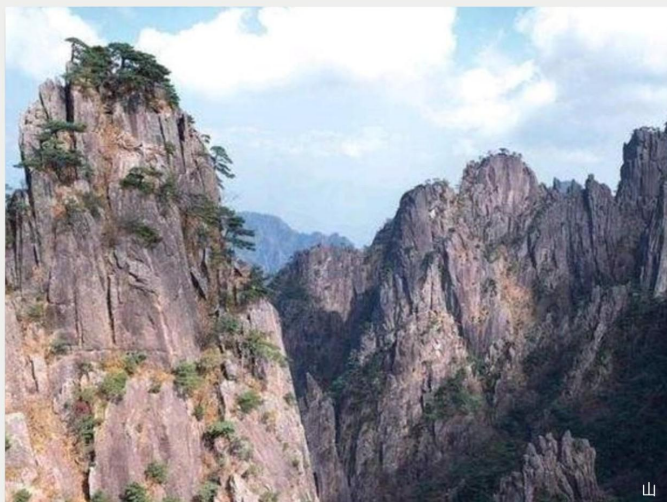
Dialogues take place with the site and the building. The design of the housing estate, Chongqing Fudi Gongyuan Huguang, echoes the urban humanities and unique atmosphere of it, and all spatial elements and intentions occur naturally.



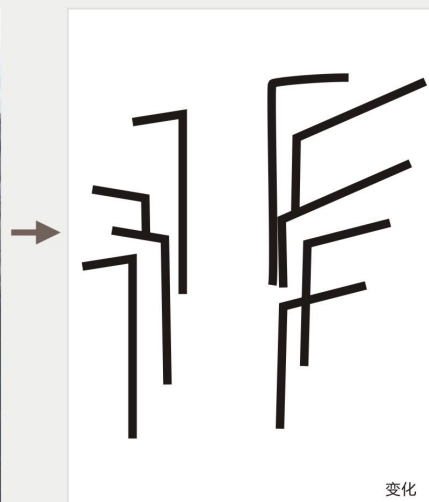


1 GEOGRAPHICAL POSITION

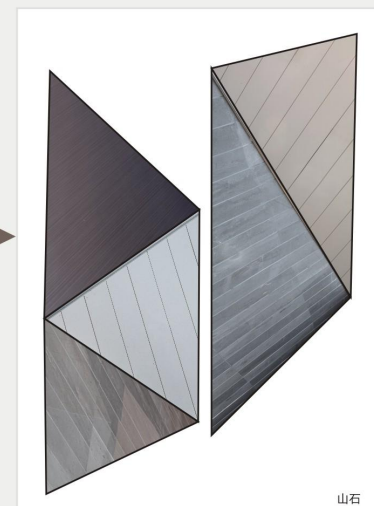
Chongqing is an important national central city in the southwest region. It has a landscape of mountains and rivers, and is the birthplace of Bayu culture. The undulating base of native mountains and rivers has created a three-dimensional urban form of Chongqing; the rich urban development process has precipitated an inclusive and open urban culture. Overlapping each other, various elements together affect the development direction of urban construction, and label Chongqing a diverse and unique city.



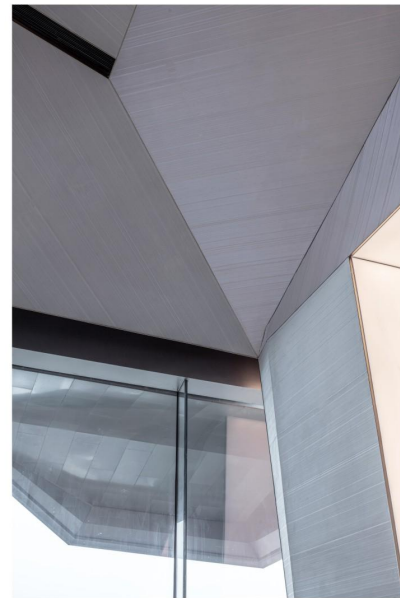
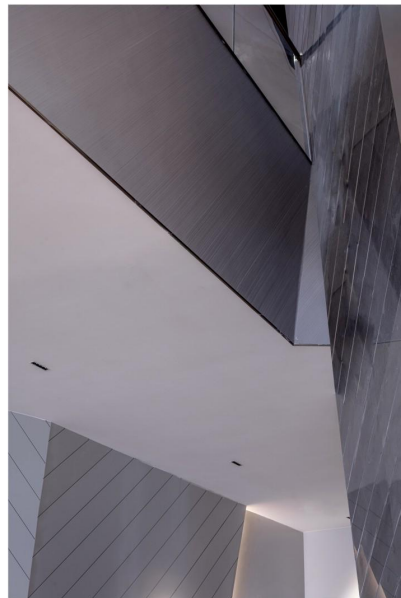
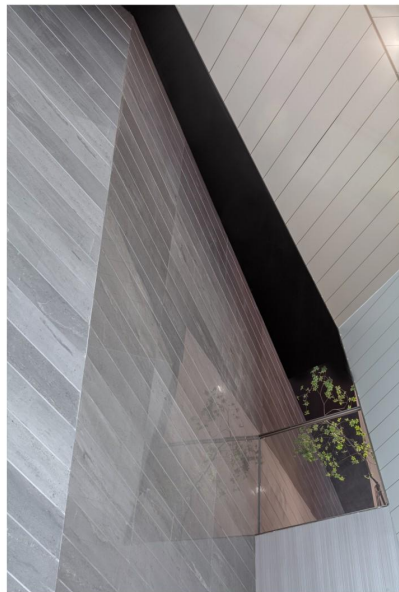
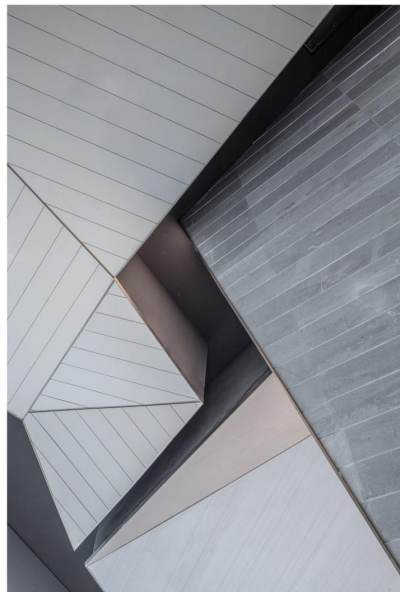
2 MOUNTAIN



3 CHANGE



4 MOUNTAIN STONE



体积感

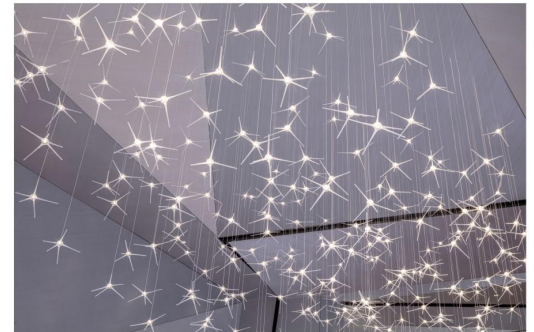
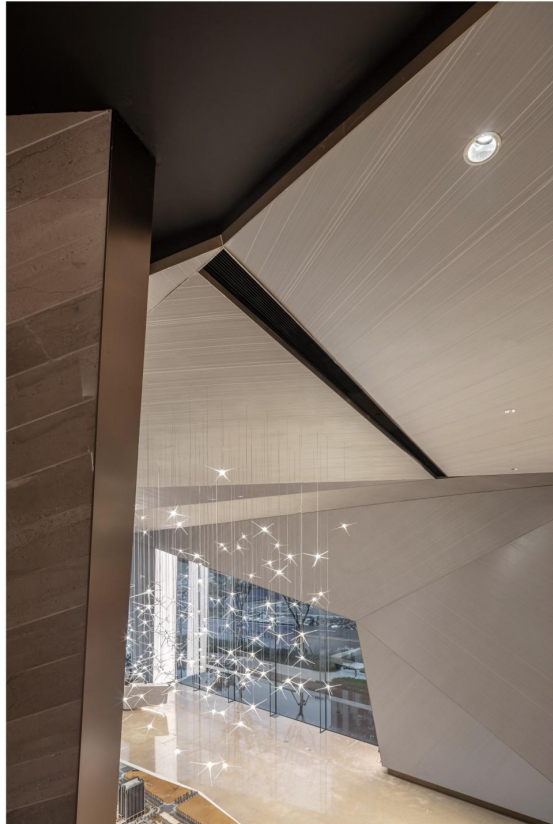
5 SENSE OF VOLUME





In ancient times, "cave dwelling" was in the wild, and later saints changed their accommodations to palaces.

It is designed according to the original rock-like mass of the building, taking the form and artistic conception of "cave" as its prototype, and at the same time taking the most primitive way of living of mankind, which is living in a cave, as its design concept, forming a wonderful atmosphere like cave dwelling.



Looking up at the sky,
those distant stars are
the "decoration" of the sky.