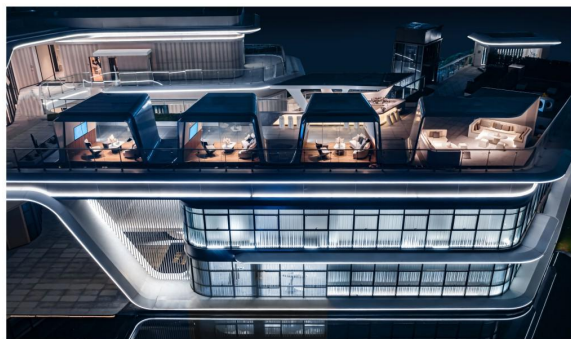


RIVER PALACE

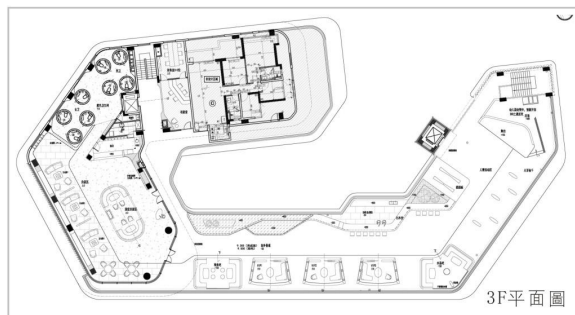
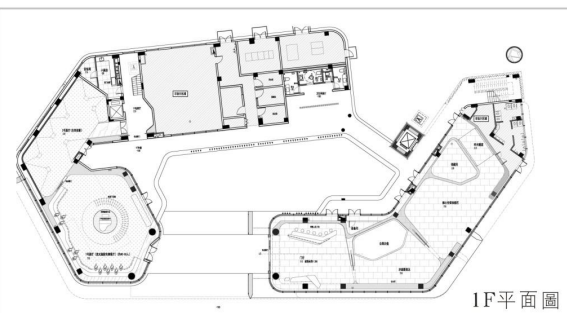
廣州中海[觀瀾府]

露臺

TERRACE 01



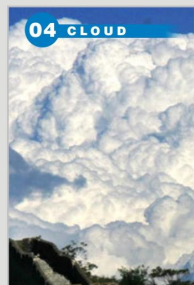
The majority of yacht design is related to water. To break the waves, the outlines of yacht are mostly streamlined – which is exactly the natural form of water; within the streamlined outline, decoration, furniture and even the form of the space itself are restricted and influenced by it, and once again respond to water-related reveries.

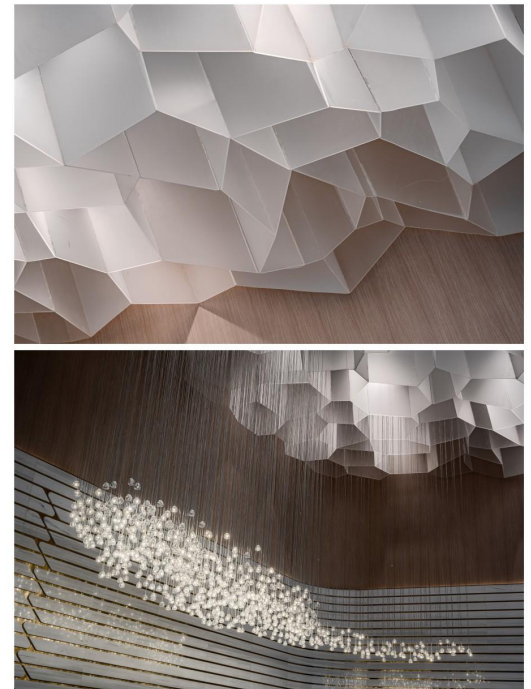




With lines growing from the ground, undulating like waves and delineating several sets of pavilion-like private space, it is ideal for friends from a specific circle to have a drink here.

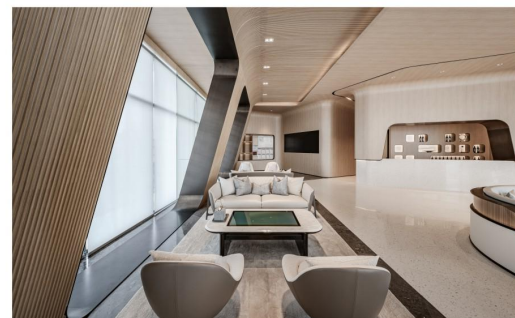
思路概念 **02** IDEA CONCEPT





As soon as you enter the space, you can see water, which turns into rain and merges into clouds. The sunlight passes through the clouds, brightening or extinguishing with its intensity. The designer was inspired by the natural meteorological change and abstracted it with geometric shapes to form the ceiling on the top of the reception hall.

seats are arranged based to the rebuilt window panes in the interior of the three-story negotiation space, as if it is in a yacht, the social area is divided by the scenery of the window sash. A huge touch screen is set up above the table, laying out the whole picture of the project.





Under the guidance of ceiling, you can reach a mysterious place, where the beams of light in cool and warm tones rise through the sky. It seems to be infinitely distant due to mirror reflections, like ancient palaces that accidentally show up when people dive deep under the sea.