

**TEXTILE**





1. DURING THE MING AND QING DYNASTIES, HANGZHOU HAD THE GOVERNMENT OFFICES THAT SUPPLIED TEXTILES FOR THE IMPERIAL PALACE

2. DEQING COUNTY IS LOCATED ALONG THE BEIJING-HANGZHOU CANAL. IT IS THE MOST ADVANTAGEOUS GEOGRAPHICAL POSITION TO DEVELOP THE TEXTILE INDUSTRY.

3. DEQING HAS THOUSANDS OF YEARS OF TEXTILE HISTORY AND IS ALSO AN IMPORTANT SILK WEAVING INDUSTRY REGION IN CHINA.



CHINA  
HANGZHOU  
DEQING COUNTY





1. THE GOVERNMENT WANTS TO PRESERVE OLD BUILDINGS AS THE CITY'S ARTS CENTER, leading people to regain the memory of history.



2. We want to energize the city and PRESERVE ITS CULTURAL MEMORY



THE OLD TOWN IS BEING TRANSFORMED

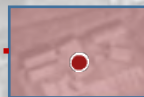


CHINA  
HANGZHOU  
TEXTILE



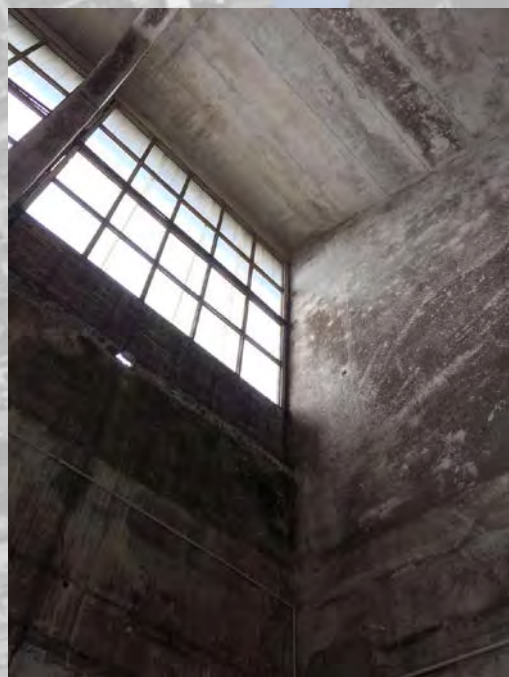
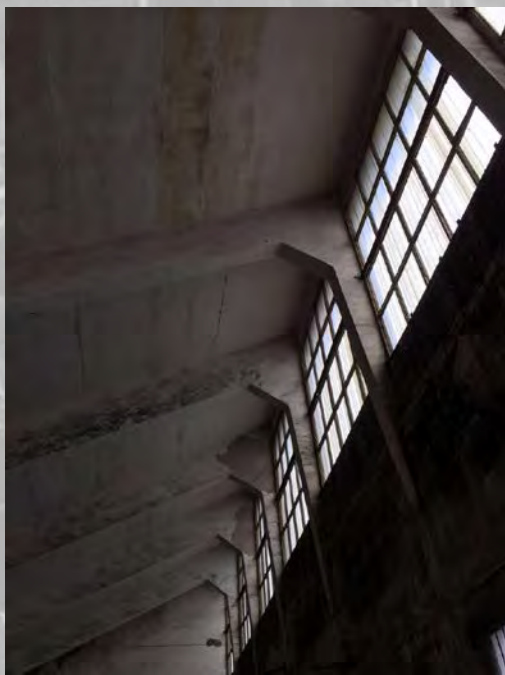


THE PAST



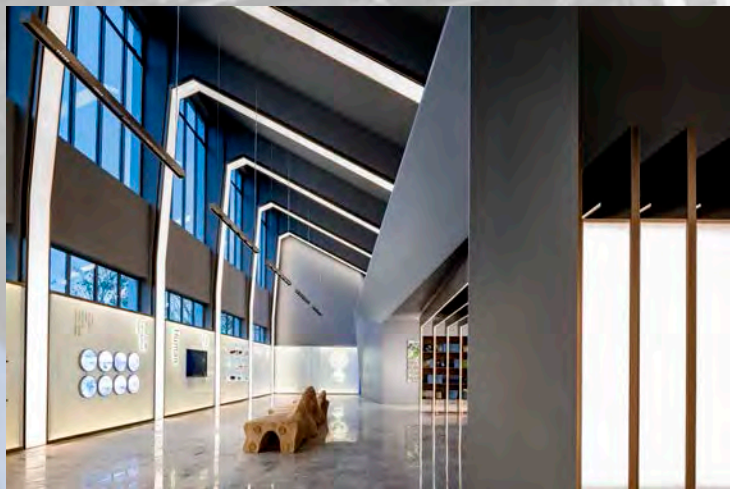
OUT SIDE





IN SIDE





EXHIBITION



LIBRARY

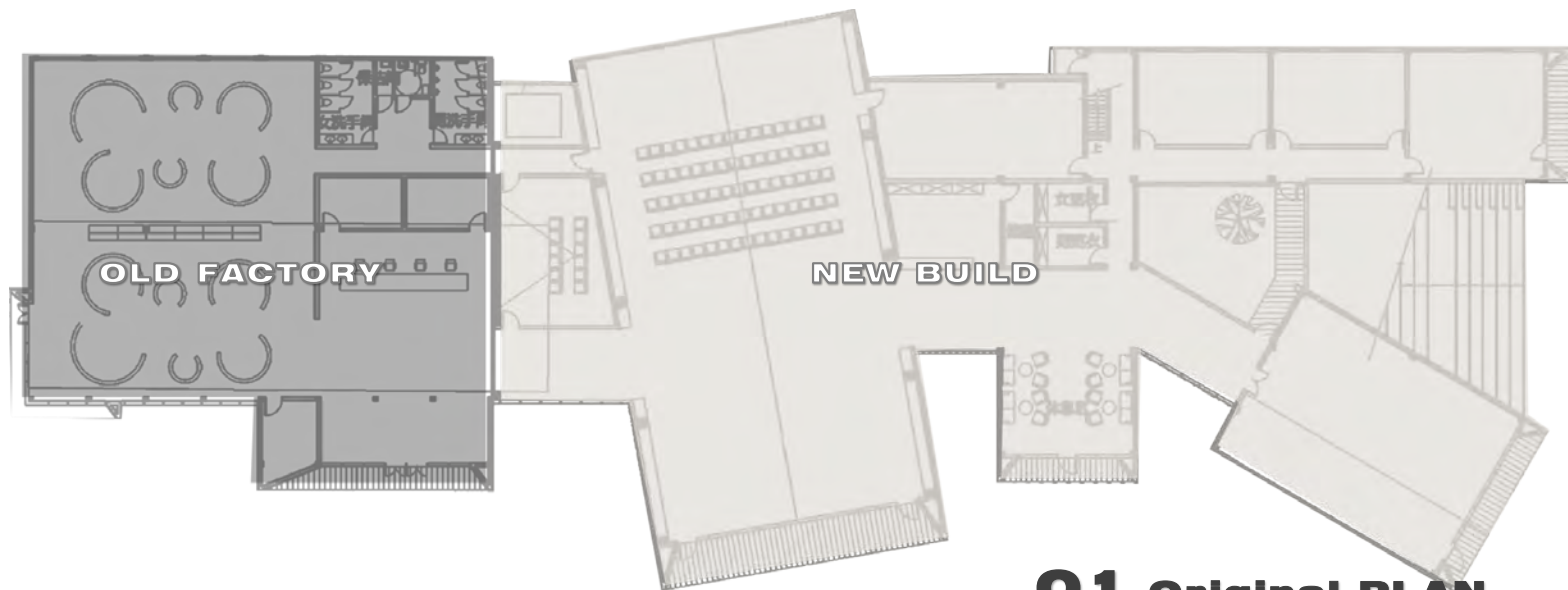


CAFE

We want to **EQUIPS IT WITH MODERN DIVERSIFIED FUNCTIONAL SPACES TO INJECT NEW VITALITY INTO THIS SPACE.**

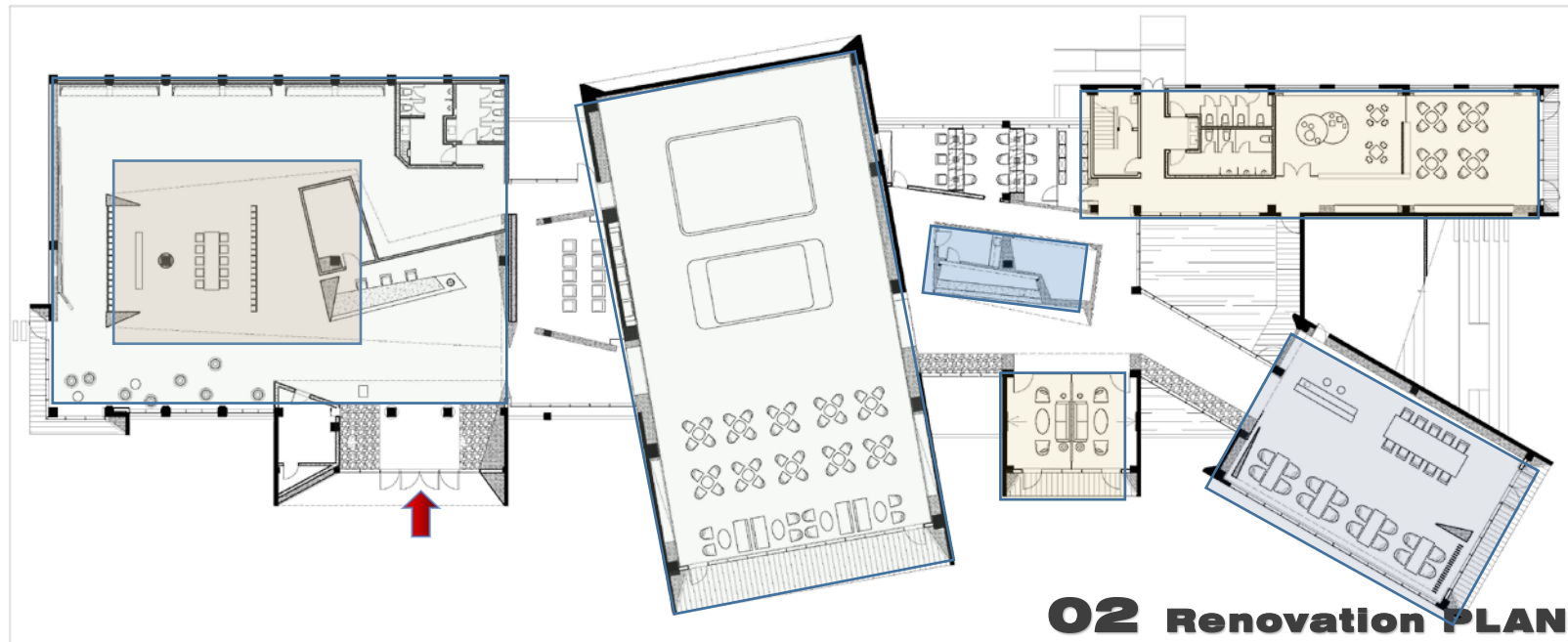
CHINA  
HANGZHOU  
TEXTILE

# PLAN



**01 Original PLAN**

- library
- Cultural exhibition hall
- Tea club
- Youth activity area
- cafe



**02 Renovation PLAN**



# TEXTILE

CITY ART CENTRE



The main body of the space follows the architectural structure of the old factory building, and uses the architectural symbols of the broken lines to integrate the building into the interior to form an organic unity. It is like an art gallery that exists in a box. The combination of the box, reflection, refraction, fission, deformation and other methods are combined, and the traditional construction is combined in a new scene with the methods of fracture, dislocation, distortion, and contradiction. The line-shaped roof makes the space more visually malleable. The light strips above the reception desk follow the roof, as if a huge textile machine and let the space cross through history and lead people to regain the memory of history.

## CONCEPT



Space 01

**D.** COMPLETE



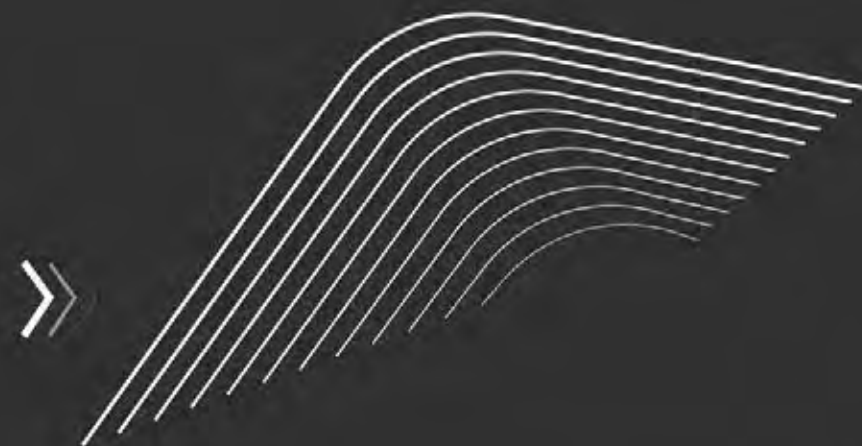
Space 02



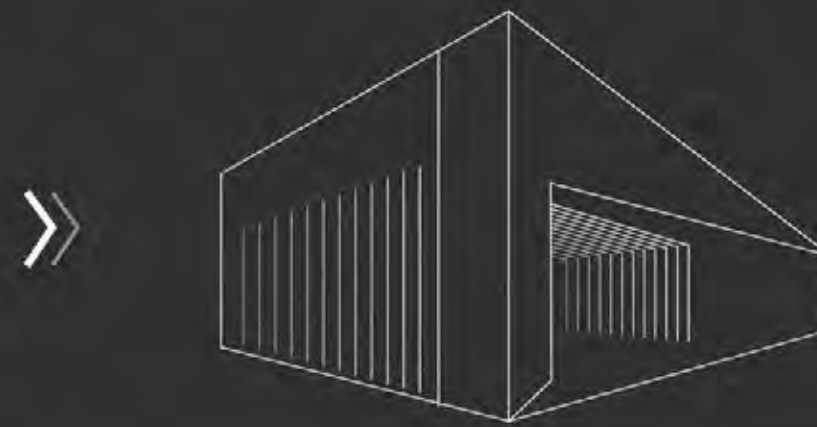
Space 03



**A.** TEXTILE MACHINE



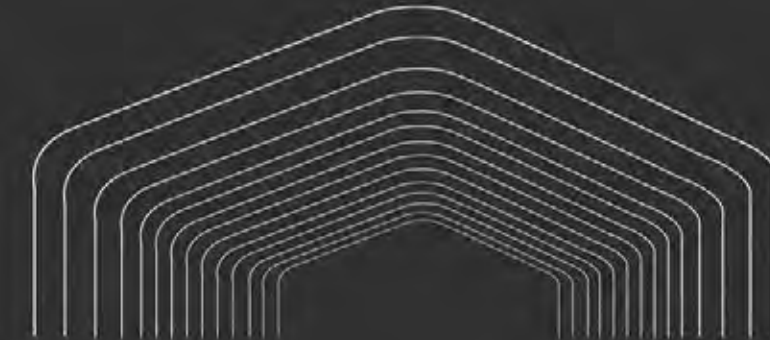
**B.** SURFACE



**C.** SPACE 01

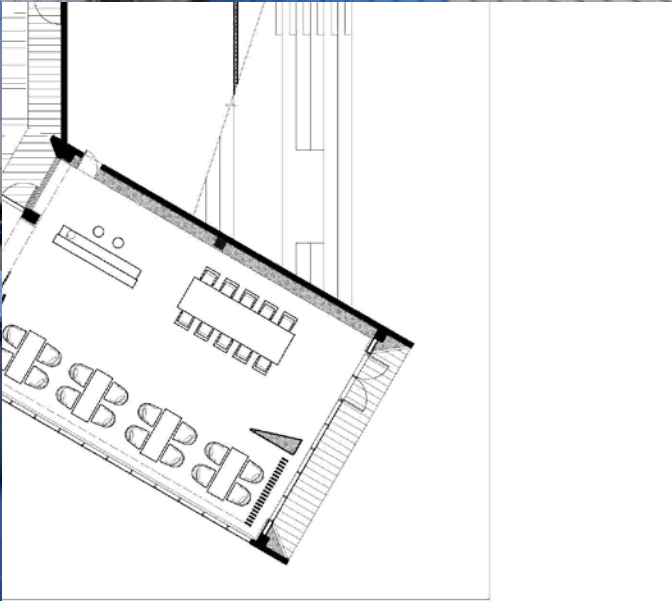


SPACE 02

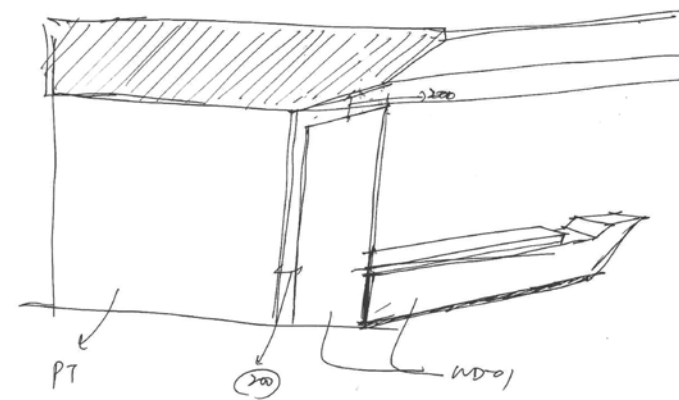
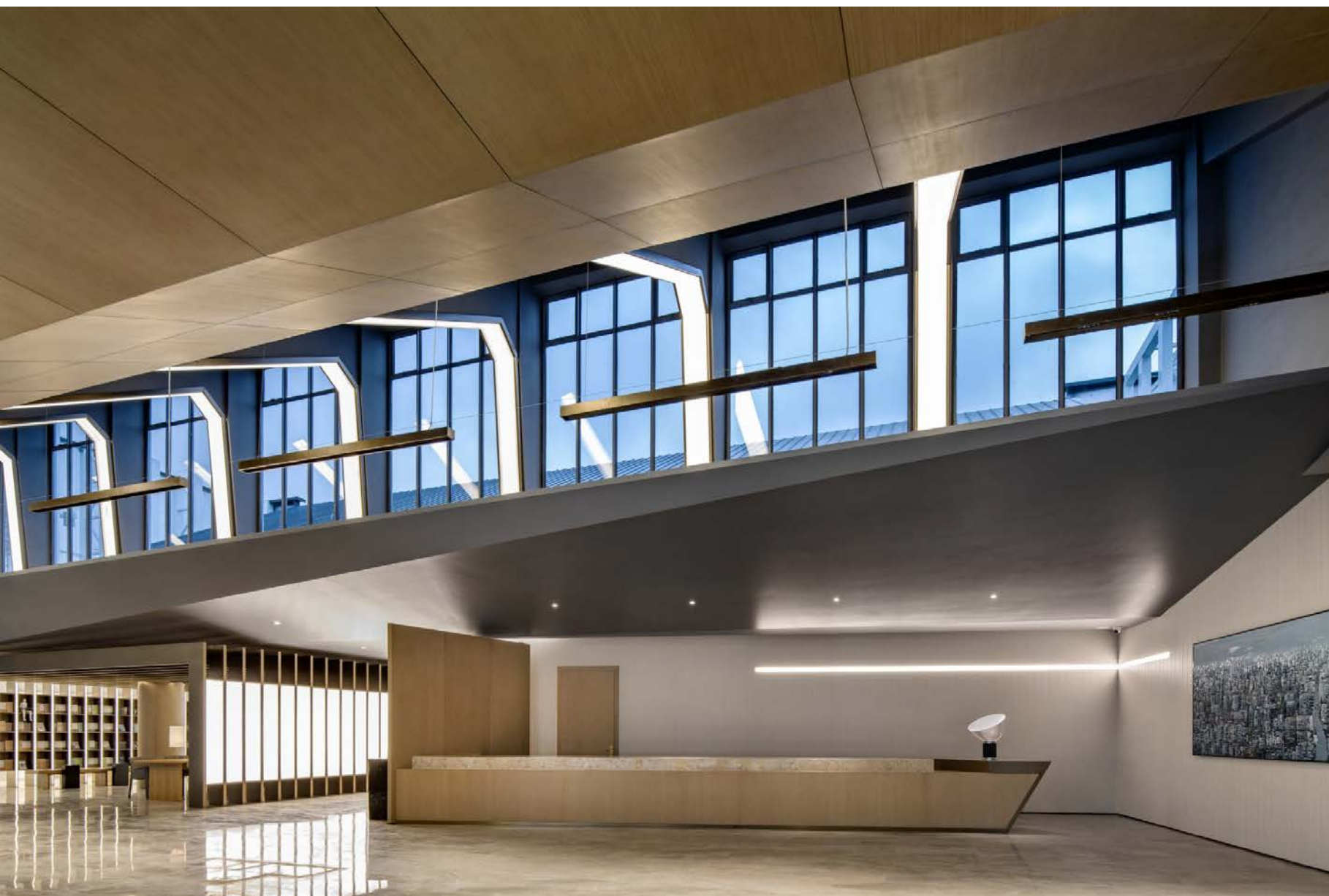


SPACE 03

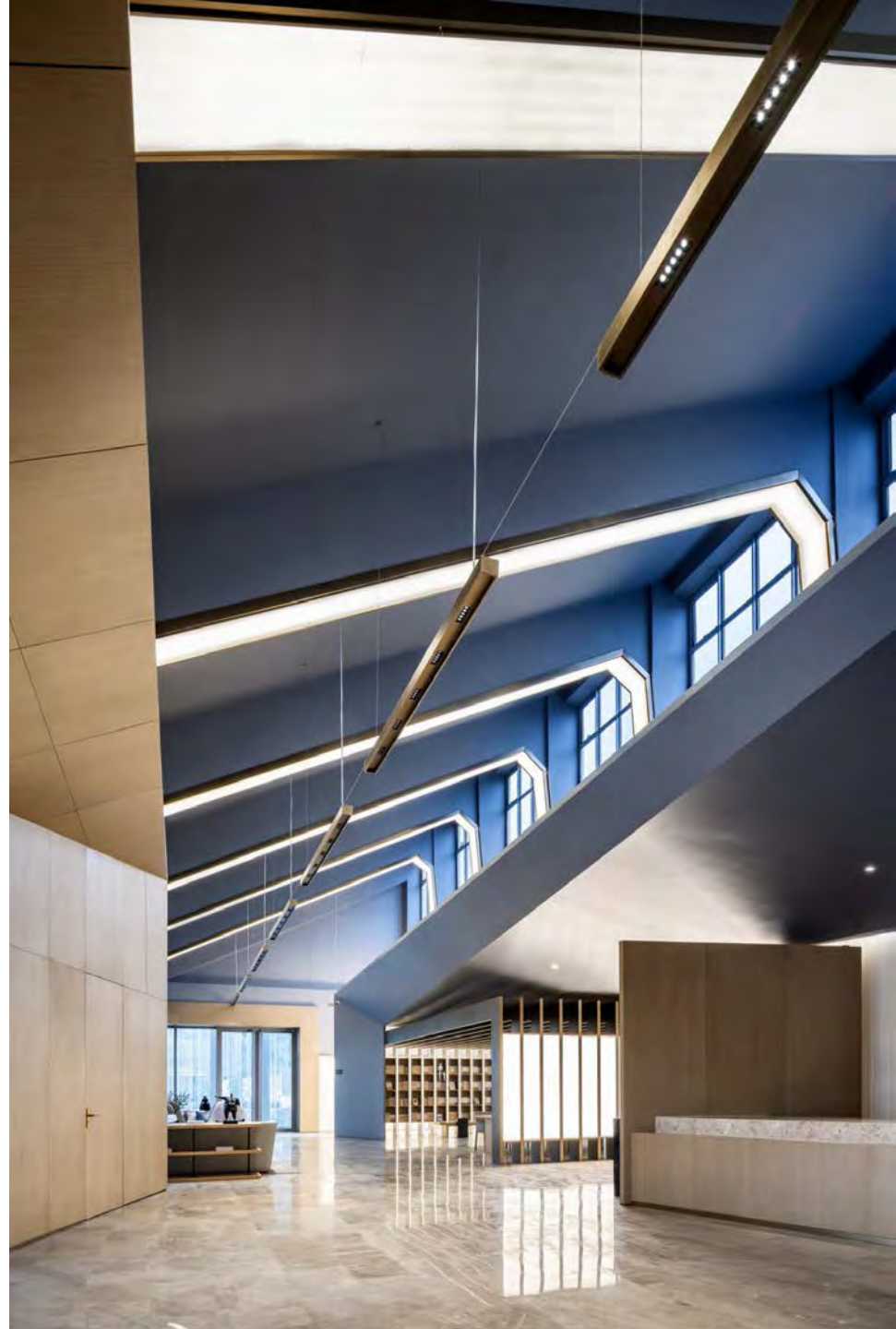
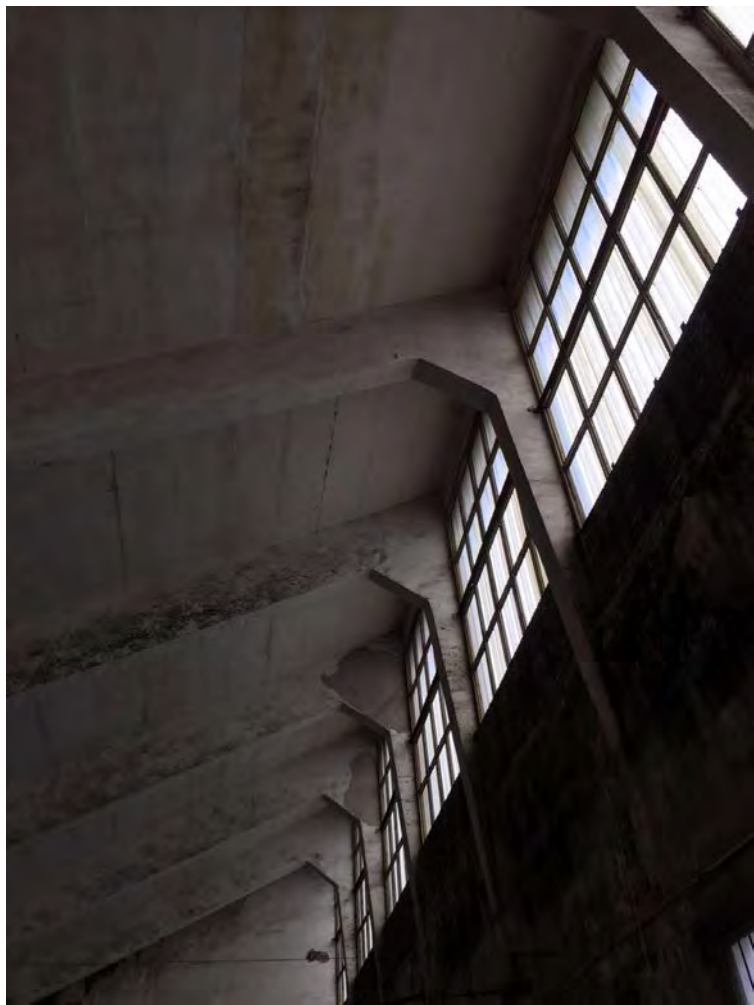




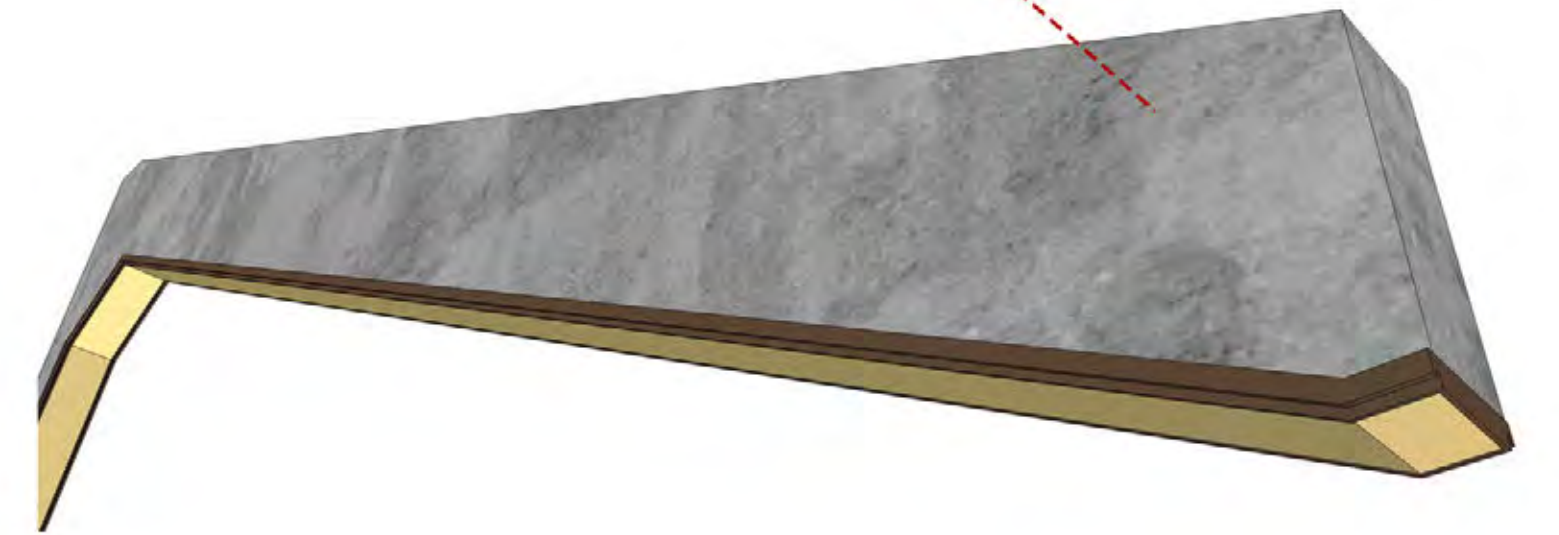
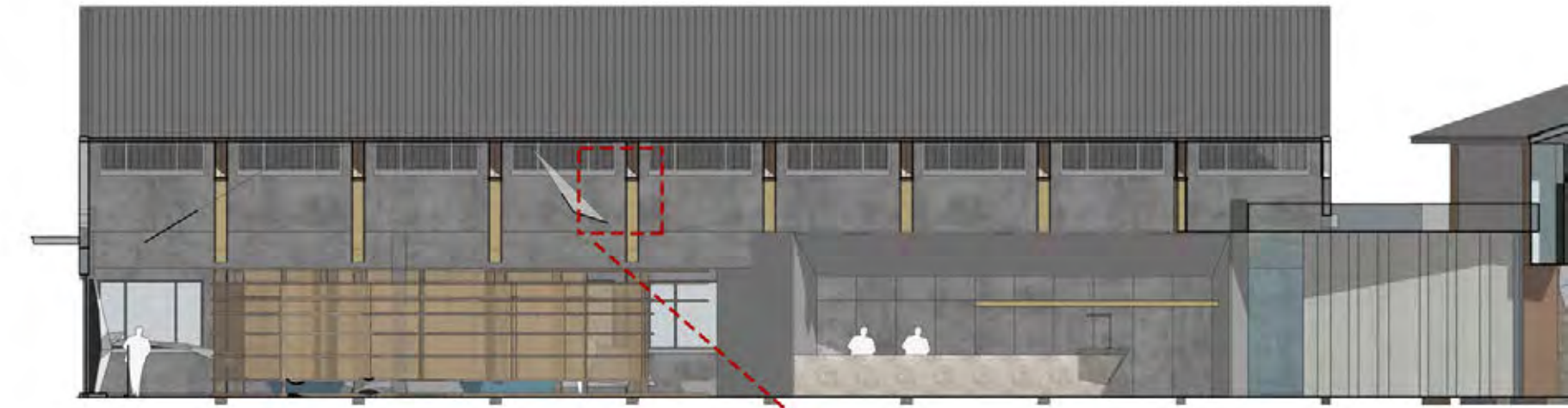




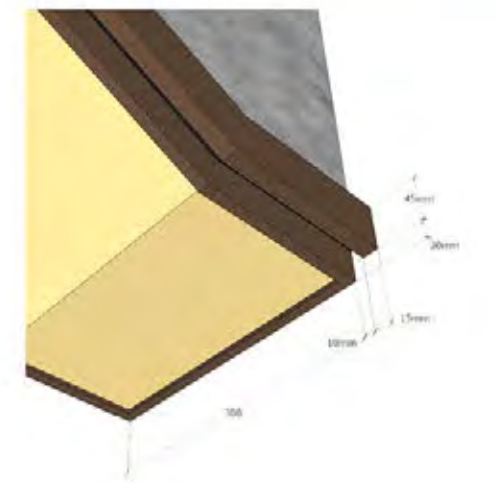




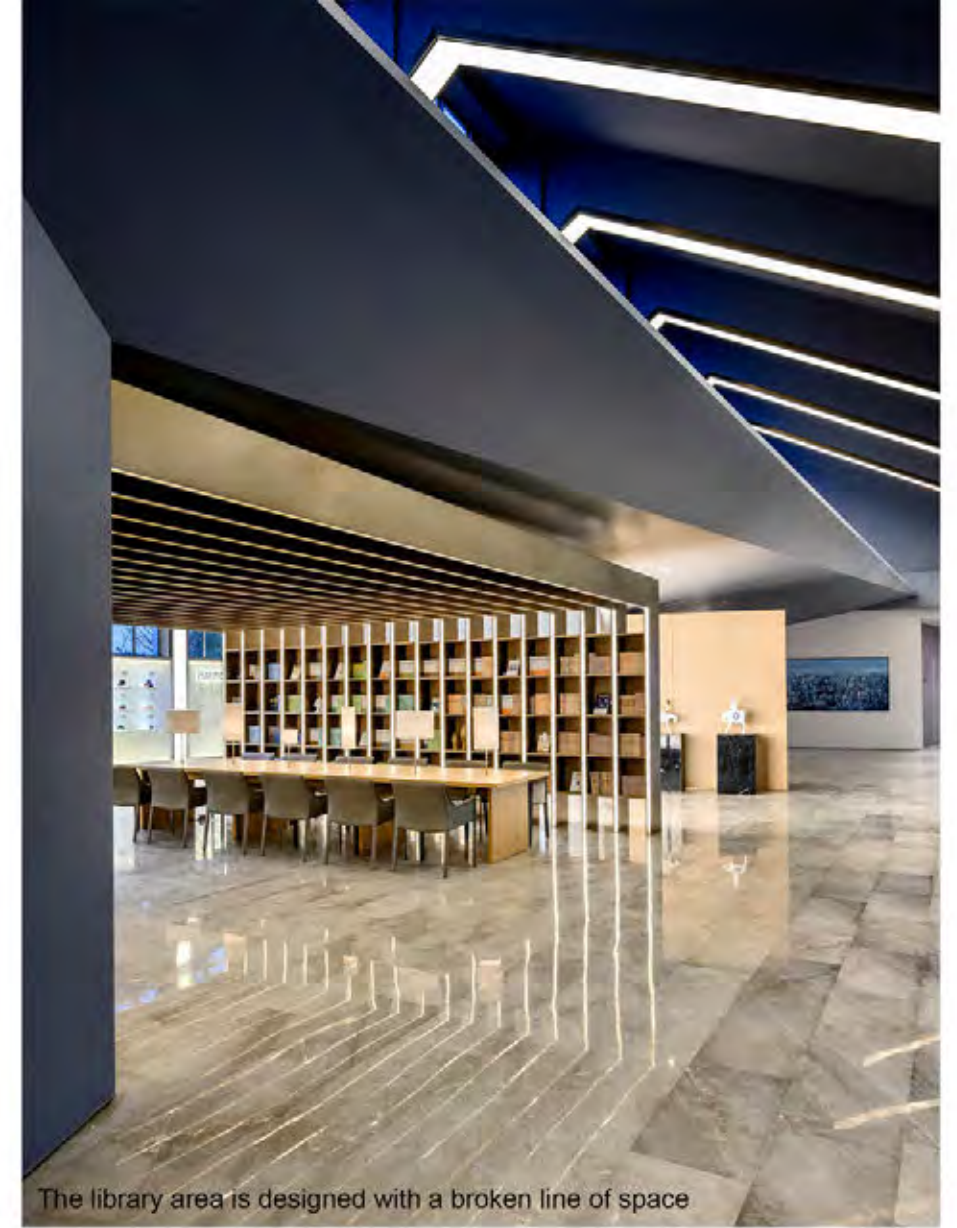




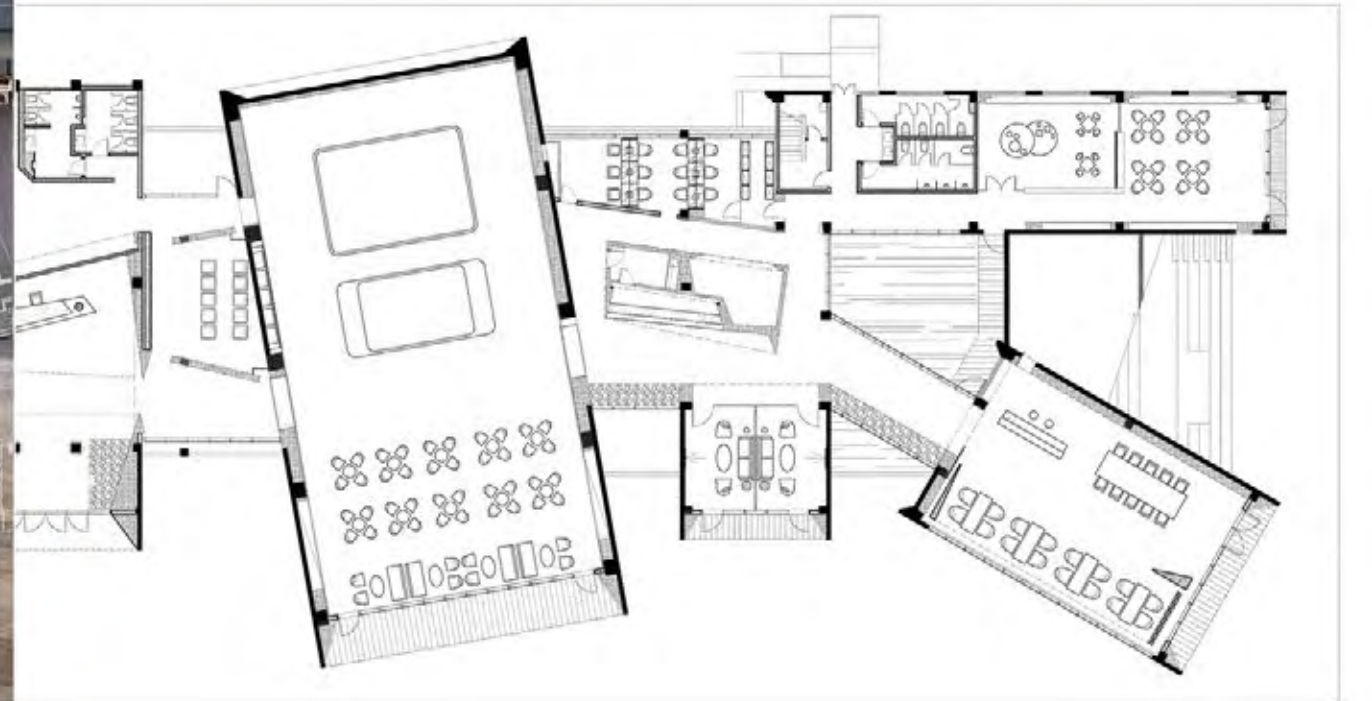
The main body of the space follows the architectural structure of the old factory building, and uses the architectural symbols of the broken lines to integrate the building into the interior to form an organic unity.



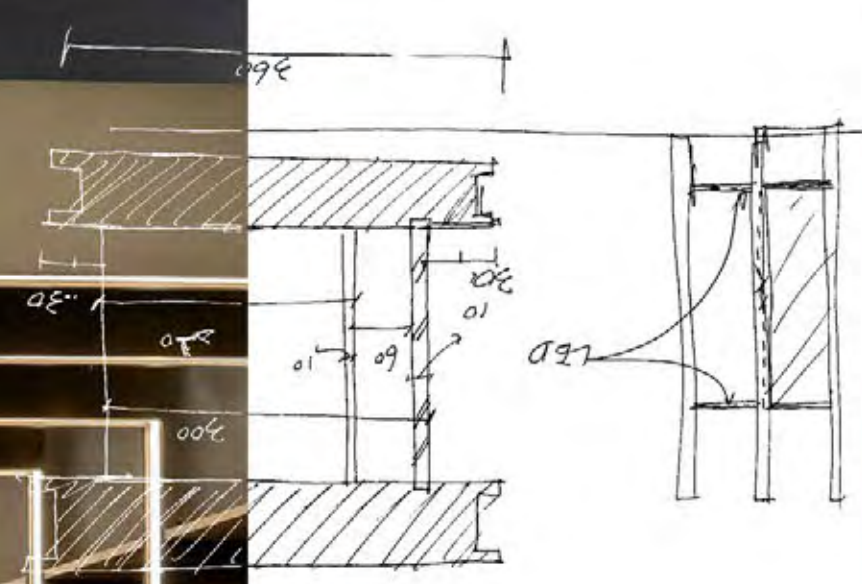




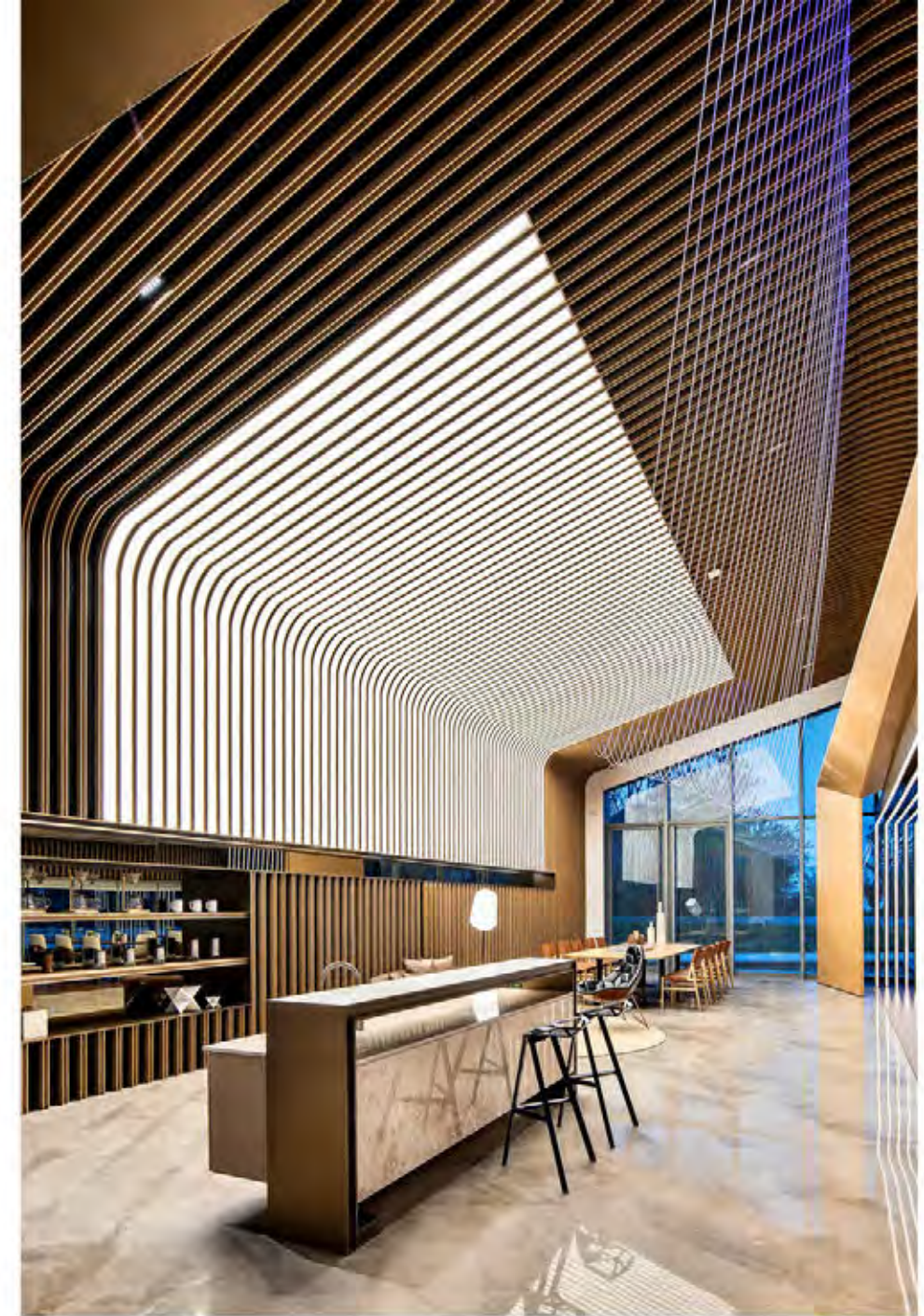
The library area is designed with a broken line of space











The roof of the art gallery continues the historical elements. The designer hopes to preserve the memory of its history and culture. He wants to translate the yarn elements of the textile machine into a modern design language, combined with the light to present the top and façade design of the space. The light formed from the yarn is related to the cultural context from ancient times to the present, and at the same time gives the space a modern simplicity and order aesthetics. It seems to tell the centuries-old textile culture of Leidian Town, and people and space can reunite with the times.





FIBER OPTIC

