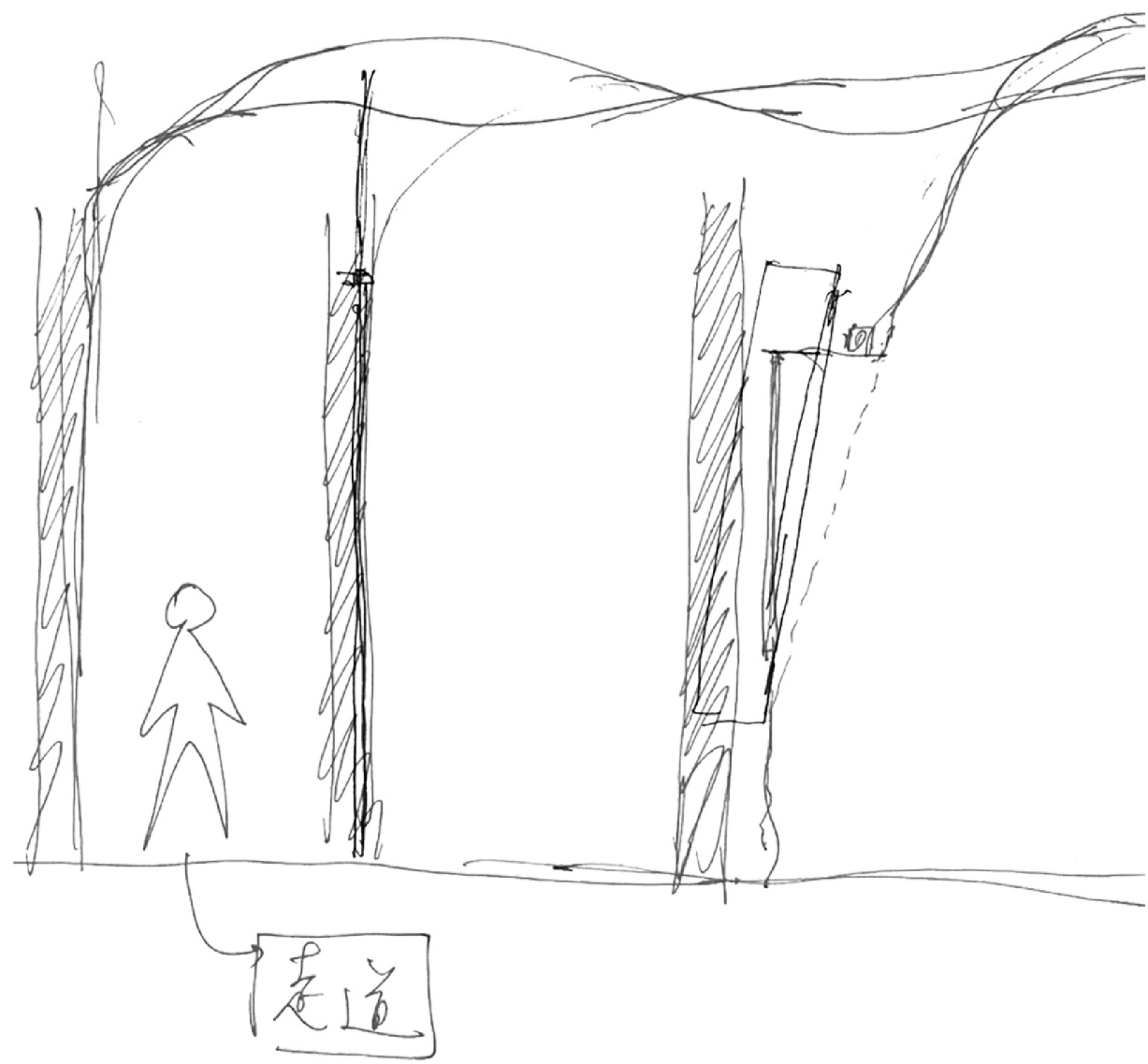
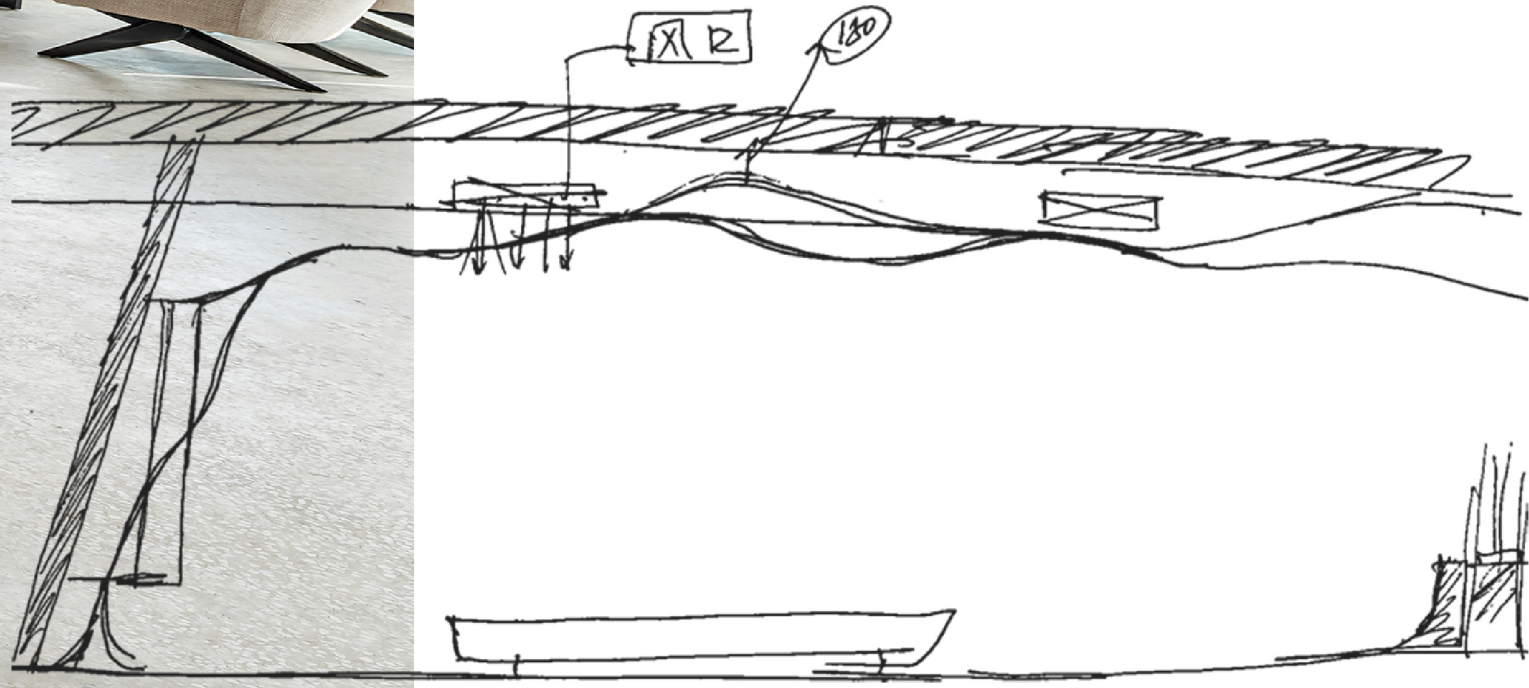




The designer applies the feeling of waves and fluctuations in the water to the indoor space. The neat wooden waves at the top of the negotiation area are interwoven with the rhythmic visual aesthetic feeling in the clouds and running water. The vitality and appeal of the curve are embodied here. It is flexible, soft and changeable, making people feel relaxed, happy and elegant.



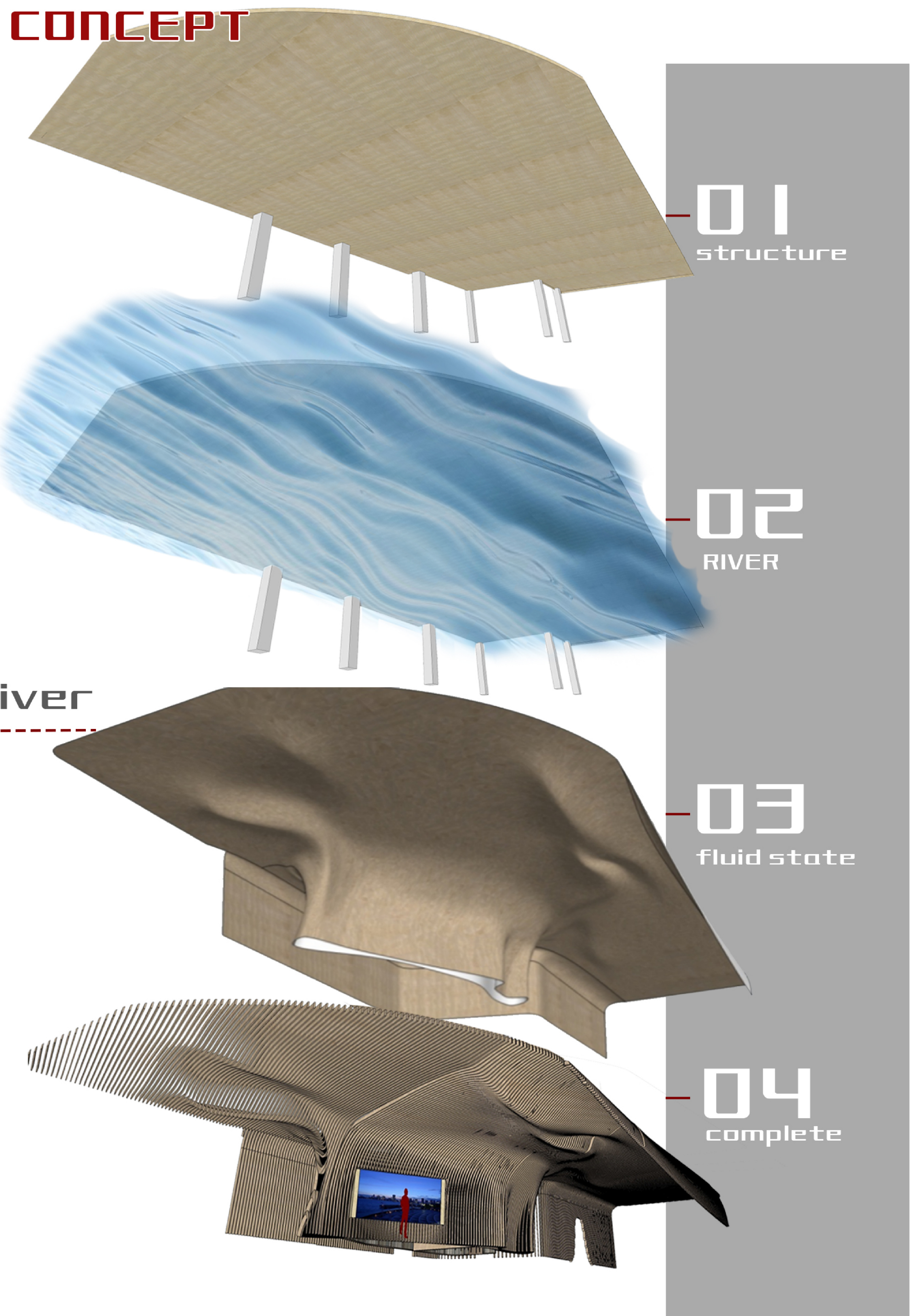
THE BEAUTY OF THE CURVE 01



The Feihe River

Hefei is the capital city of Anhui Province and an innovative capital with international influence. The project is located in the eastern part of the main urban area of Yaohai District, Hefei City, far from the noise of the city center. The northeast direction of the project is separated from the Yaohai Wetland Park. It has superior natural environment and ecosystem. A large area of green landscape belt is planned on both sides of the building to construct a quiet and fresh natural space environment. Inspired by the design of "Fei river form" of Hefei Mother River, the designer follows the concept of art design of Fei river curve and introduces the art elements of flowing space into the interior space.

CONCEPT



作品名稱	FLUID SPACE		
創作時間	2018.6-2019.1	設計者姓名	凌子達
職業	設計總監	公司名稱	KLID達觀國際設計事務所