



華人之創獎

TAIWAN GOOD DESIGN AWARD

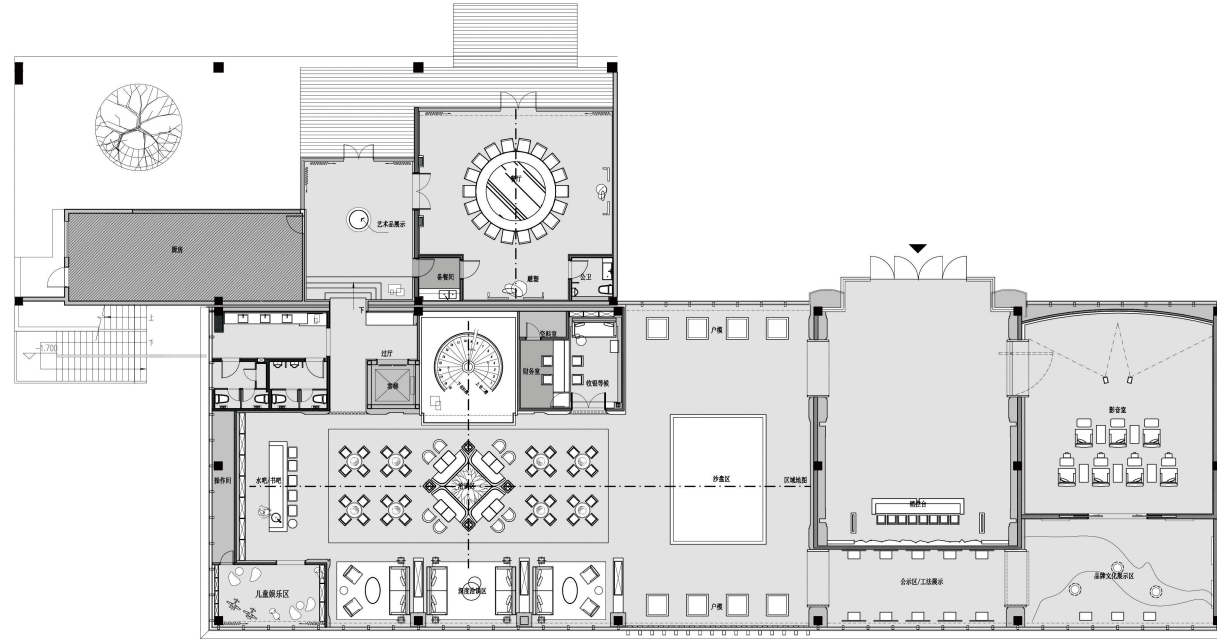
蘭州海成·金融府售樓處

Lanzhou Haicheng

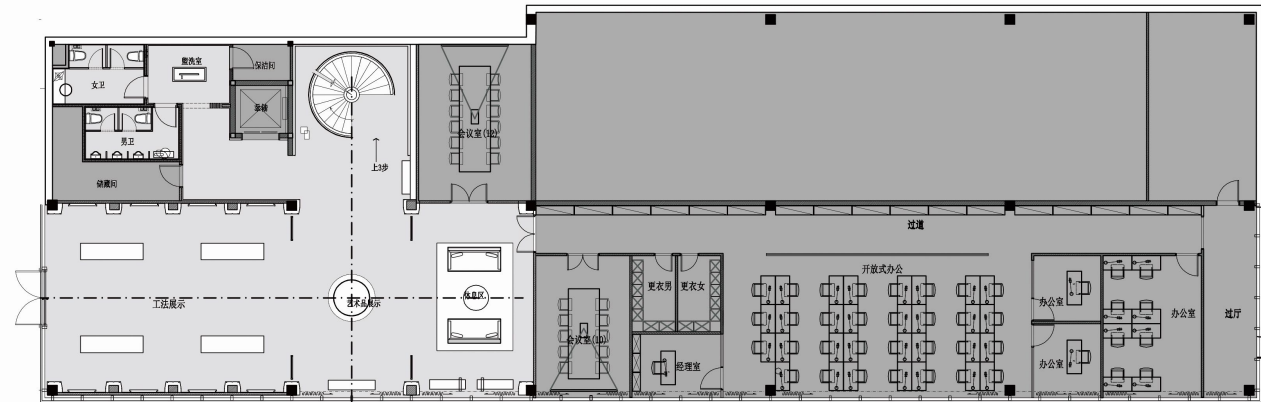
Jingrongfu Sales Center

作品資訊

Work Information



一層平面圖



二層平面圖

設計說明

Design Introduction

接待大廳的藝術燈飾似一條銀色綢帶將空間聯結，如鑲嵌在孤煙大漠夕陽中，重現當年絲綢之路上商旅不絕的景象，也仿佛聽到了飄忽在大漠中的悠悠駝鈴聲。

On the ceiling of the reception hall of the sales center, the designer connected the adjacent spaces with an artistic lighting like silver ribbon. People who walk into this space can feel the setting sun in the desert, and even think of the endless business travel on the Silk Road in ancient times, as if they can hear the camel bell floating in the desert.

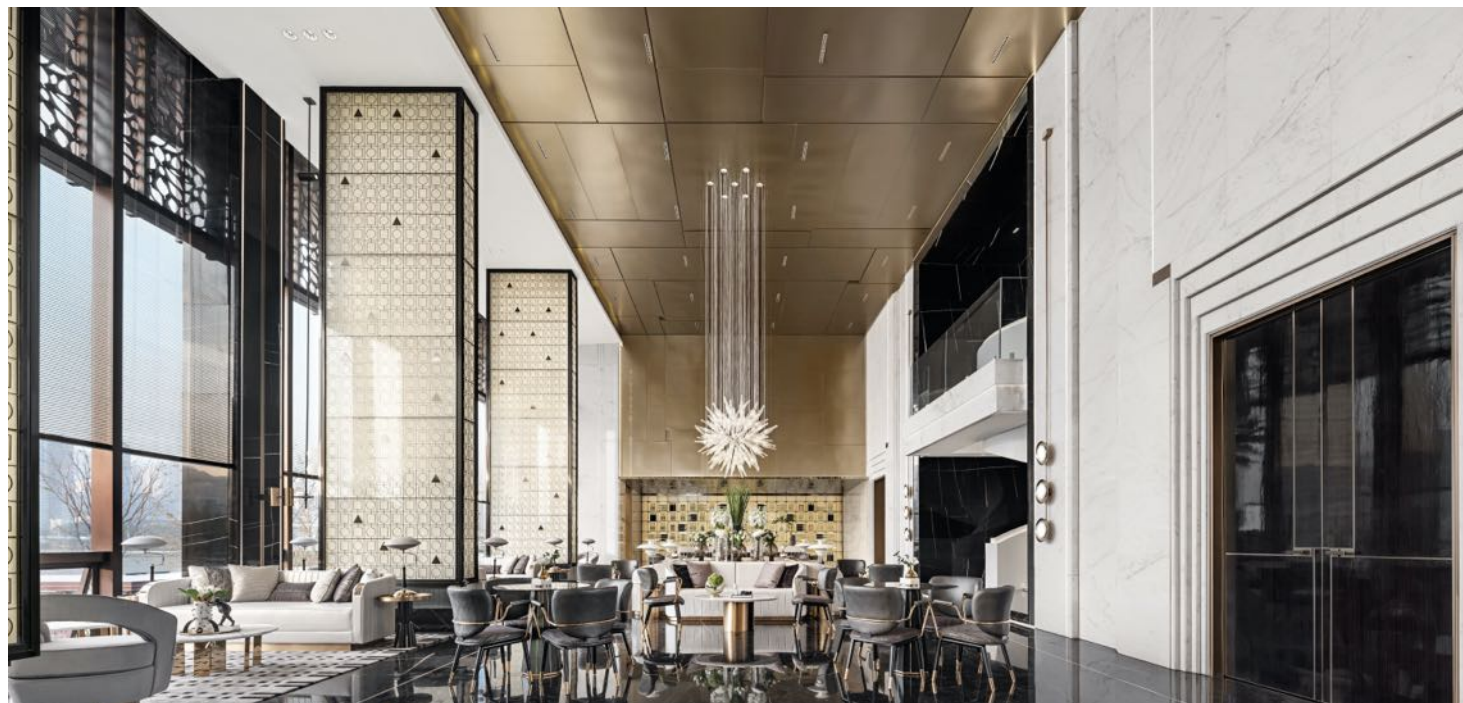


設計說明

Design Introduction

空間挑高，開闊大氣，濃厚的東方古典美學蘊含於此，對立統一的動態平衡讓空間之美充滿層次感。基於對獨特的地域文化的理解，將文化之元素與內涵融於每一件器物中，用藝術與設計表達蘭州的大美蒼穹，無限星光。

Super high space appears open atmosphere, and will be strong Oriental classical aesthetics contained in them, there is the dynamic balance of the unity of opposites let the beauty of space full of layers. Based on the understanding of the unique regional culture, the designer integrates cultural elements and connotations into each decorative object, and USES art and design to express the beautiful scene of the city of Lanzhou with its big sky and infinite stars.



設計說明

Design Introduction



洽談區大廳高而開闊，雄渾大氣，屏風樣式的隔斷，蘊含著濃厚的東方古典美學，亦可謂“重到蘭州境，吟魂覺暗消”。而這“屏風”又因上面規律的幾何圖形添了幾分現代的靈動感，細微的結合卻是深遠的視覺變化。

The lobby of the sales center's negotiation area is spacious and gives a grand atmosphere. The designer uses a partition of the screen style to contain a strong oriental classical aesthetic. The regular geometric figures on the screen also add a bit to the entire space. Modern dexterity, though subtle combination, also brings profound visual changes.

設計說明

Design Introduction

蘭州，古稱“金城”，黃河穿城而過。本案將千年來的西北盛景融匯於建築室內空間中，以金色為主色調，將絲綢元素融於室內及陳設設計中，彰顯出東方特色的奢華高貴，與建築外煙霞互為呼應。

Lanzhou, known as "Golden City" in ancient times, it's crossed by the Yellow River, which is the most famous river in China. In this project, the millennium northwest scenery is integrated into the interior space of the building, with gold as the main color, silk elements are integrated into the interior and furnishings design, highlighting the luxury and nobleness of Oriental characteristics, and echoing the haze outside the building.





設計說明

Design Introduction

水吧利用紋理增強質感。黑色的神秘，金色的奢華，帶來強烈的視覺衝擊。反映高級藝術情調的同時，更代表對高品質生活細節的追求。

The water bar in the sales center uses textured decoration to enhance the space texture. The mystery of black and the luxury of gold bring a strong visual impact. While reflecting the high-level artistic mood, it also represents the pursuit of high-quality life details.

陀螺形狀的藝術裝置將過客的目光集中於過廳，空間的藝術性在這裏展現出來，絲綢的金色依然貫穿，如放置藝術品的圓臺底部、桌椅腿部等，於細節處體現藝術之美。

The gyro-shaped art installation focuses the passer's attention in the hall of the sales center. The artistry of the space is shown here, and the golden color of silk still runs through, such as the bottom of the round table where the artwork is placed, the legs of the tables and chairs, etc., in the details. Reflects the beauty of art.





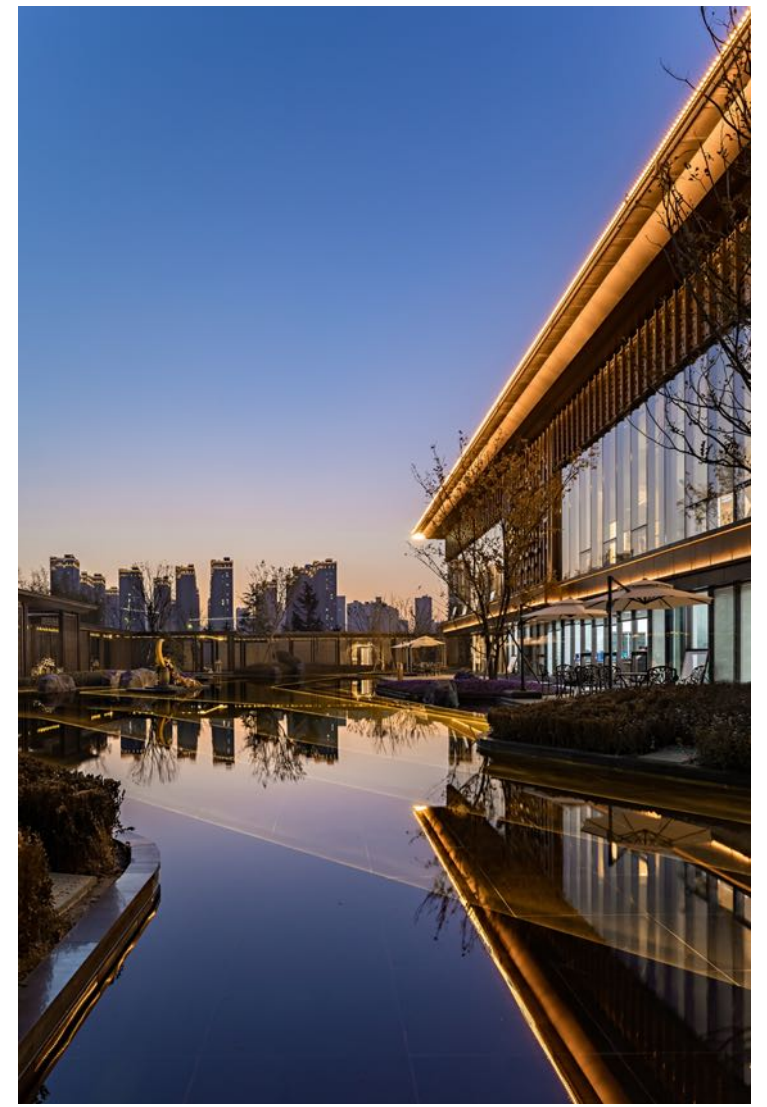
設計說明

Design Introduction



黃河遠上白雲間，一片孤城萬仞山。二層vip區從一層的莊重氣節中跳脫出來，柔和的色彩，使它更顯得祥和寧靜。像是從喧囂吵鬧的街道忽然轉進了婉轉狹長的小石板路，繁華聲絕於耳。

The VIP area on the second floor of the sales center escapes from the solemn temperament on the first floor. The soft colors make it more peaceful. It was as if suddenly turning from a hustle and bustle of the street into a gently narrow, small stone road, and the bustling sound was absolutely audible.



華人生創獎

TAIWAN GOOD DESIGN AWARD

Thank you !