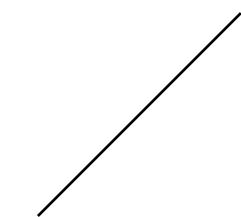


|||||.....|||||.....|||||.....

山瀾暮嶼



Monolithic Palace

大量混用木石質材，使自然元素徜徉於空間內，不被單一形式束縛。
山水景致重現於入門處天花壁面，以及光線錯落灑至的格栅區，大面積的敘事手筆，展現業主理想的自然原木本色設計。

The design team exploits abundant timber and stone to layout the space. Both the ceiling and the wall at the entrance are constructed of nature images, and assort with the wooden grilles, hence present the rustic texture of the property owner's ideal design.



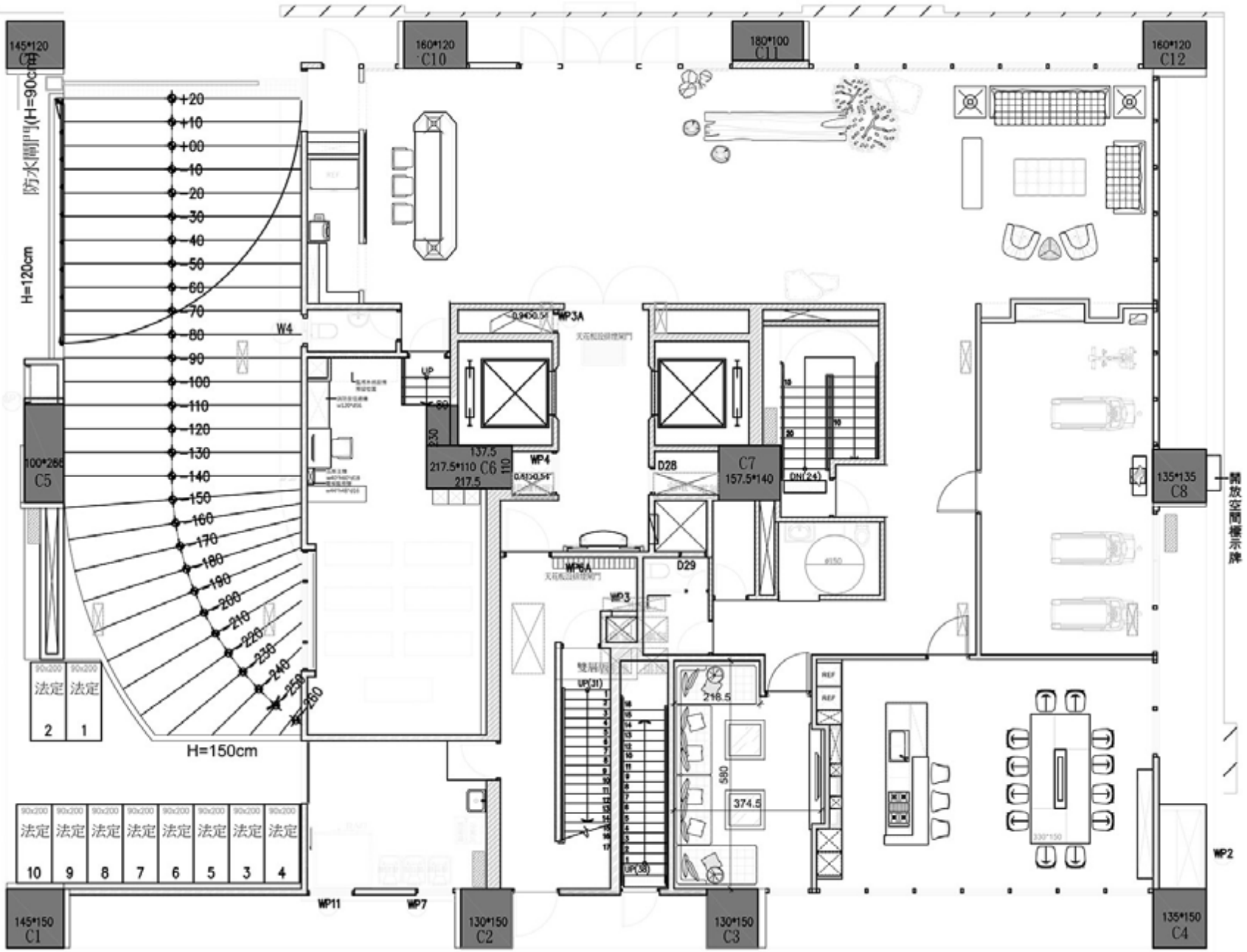


設計概念

Design Concept

業主在情境上表達了對原初系色調如暖木色、自然意象的喜愛，於是設計團隊依循其想法加以劃設，使整體景觀具渾然天成的壯闊風光；引渡山水意象進駐公設，突破日常的天地壁構圖，採用波浪符號以及相異的材質與色樣，最終鋪敘出色彩濃豔卻寬闊非凡、具流動性的量體景觀。

The property owner is keen about raw colors such as the balmy wooden hue and nature scenes; therefore the design team planned the panorama space of a magnificent natural layout to comply with the idea. Set up the public domain of landscape factors, for example, get rid of the conventional patterns of the ceiling, floor, and walls, further, make use of different materials and colors and then transform into waving texture, eventually construct an extraordinary dynamic views of the building site.



平面圖 Floor Plan



山瀾暮嶼 | Monolithic Palace



接待櫃檯

The reception counter

進入大廳，搶眼的酒紅與珠光藍迎面而來，予人強烈的視覺感受，進口材質的紅、藍皮雕版，分別在櫃檯後方以及廊道防火門做出造型。此外，團隊更在製作櫃檯背板時，以泡棉的佔比製造面板的厚薄差異，展現拼貼面的趣味；在此之上，更細心呈現散發貴氣的牡丹模樣，增添場域格調。

While entering the hall, the eye-catching colors of deep wine and pearlescent aqua grabs the sight, which manifests the stunning texture. The wall at the back of the reception counter and the elevator hallway fireproof door respectively make use of the imported blue and red leather crafts. The design team particularly takes the advantage of the thickness difference of panels to display the interest of the wall surface, and the peony figure that gives out the elegant spirit in the meantime puts a glamorous finish touching into the space.



山瀾暮嶼

／
Monolithic Palace

電梯廊道

The elevator hallway

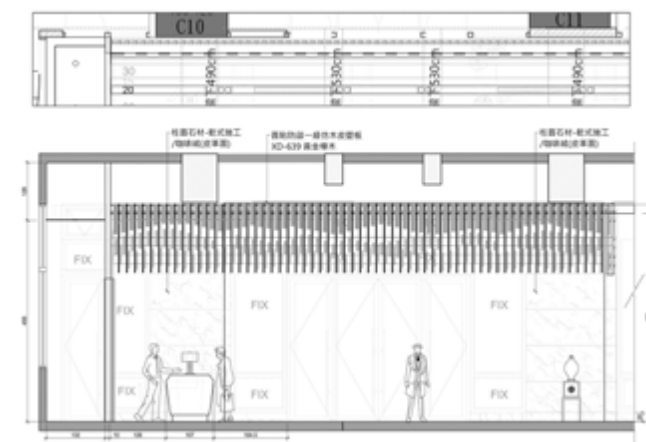
和外部接待大廳做出區別的電梯廊道，在形塑視覺3D效果的地板導引至終點後，是展演遼闊意象的鈦金屬端景，藉由窗櫺景致聯想的造景，伴以擺設品身後採特殊塗裝作法的藍與金，將筆直通道的空間感延伸向前。

Construct the elevator hallway floor of three - dimensional effect, which is tell apart from the reception hall. And making use of the window mullion image to guide the vision forward to the end of the hallway, well assort with the selected decoration and the special titanium coating treatment of blue and golden hue that excellently brings out the whimsical end view.



山瀾暮嶼 | Monolithic Palace

大廳AE-01立面圖



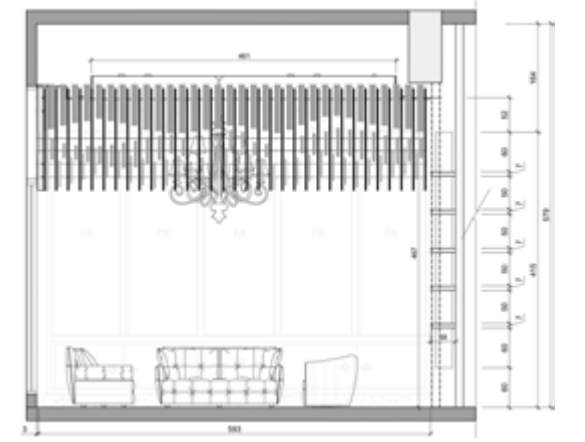
大廳

The reception hall

空間佔面廣闊，考慮設置遮簾會隱蔽外頭風光，設想避免日曬的其他途徑，最終決議在與天花板接點處配設格柵，具備山巒意象的模樣，在使陽光翩翩散落室內的同時，延續建築外觀的綠意景觀，內外設計相輔相成。

Considering that the setting of the sunblinds will conceal the outdoor scenery, thus the design team decides to make up the wooden gratings along the ceiling sides, which brings out the landscape feature of the vast space. The ingenious design not only introduces the outdoor sunlight, moreover works in concert with the exterior green views.

大廳AE-02立面圖



石材以自然質感呈現，藉表面的紋路顯出大海奔流的視覺效果，而天花板在數次調整後也與之呼應，引渡流水畫面、埋藏管線動態，並以黑色線條做切割，以流線型的割線增加空間亮點。

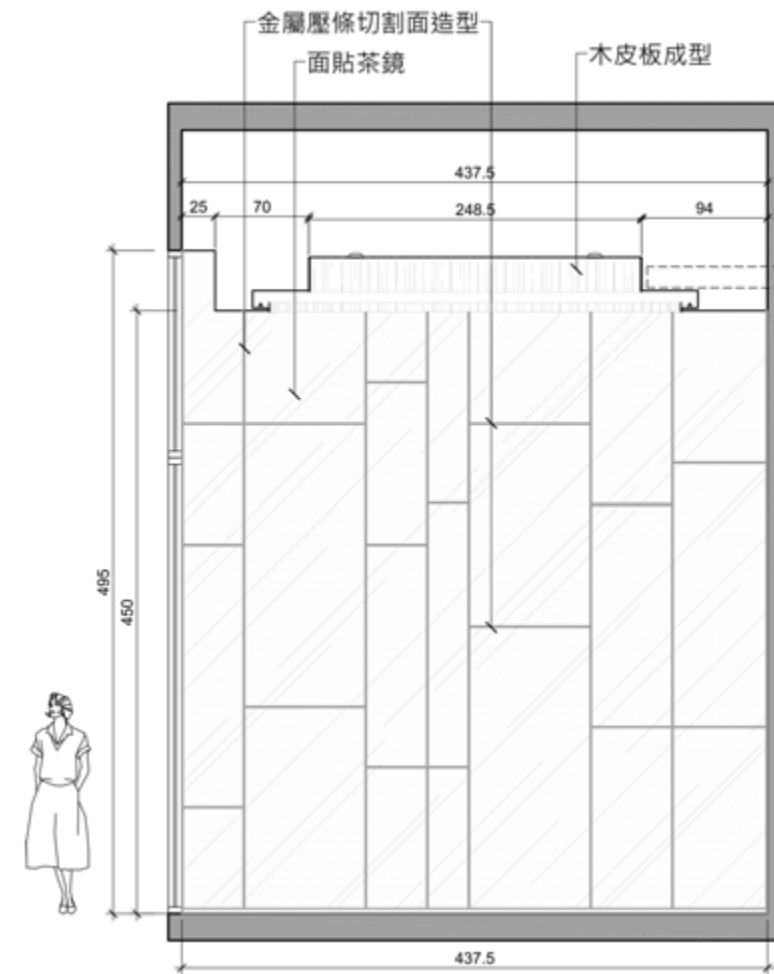
The stone wall is presented with its natural factor, which by means of the surface texture to bring about the visual effect of waves. And the ceiling has modified several times to create the dynamic outline, at the same time perfectly hide the pipelines. Furthermore, the black streamlined secants of the ceiling then become one of the striking features of the space.



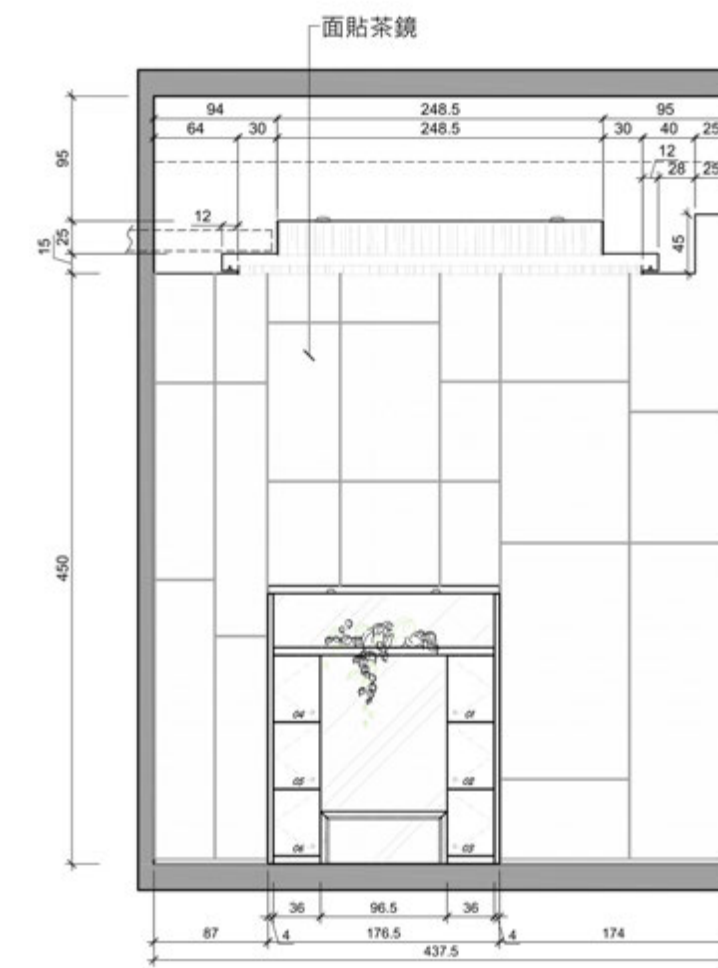
山瀾暮嶼 | Monolithic Palace



健身房DE-01立面圖



健身房DE-03立面圖



健身房

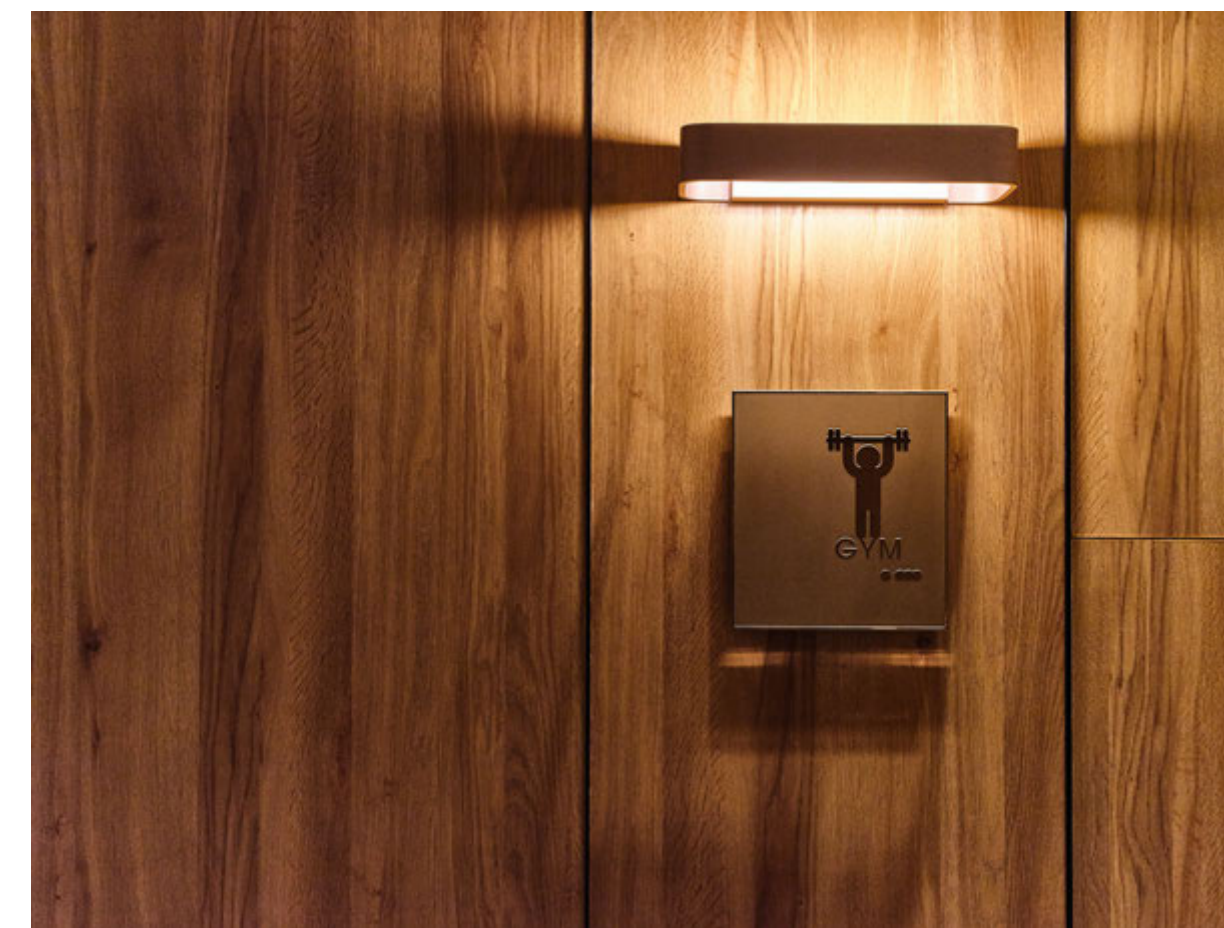
The fitness centre

健身房中使用大量茶玻板塊，結合金屬條的不規則切割，使空間表情更加豐富，除了有視覺延伸效果，更映照出健身者的身姿。

獨樹一格的區塊照明臉譜，在此揭開序幕，團隊成功克服弧形面框的做工難度，將木質地搭配暖色系漆面，在玻璃左右環伺的區域中，渲染溫柔的自然因子。

The fitness centre exploits tawny glass mirrors that go with the irregular metal lines, which enriches the spatial situation. Besides create the roomy perception, thus reflects the posture of the exercisers as well.

The design team successfully overcomes the difficulty of the arc frame pattern illumination, and then set up the extraordinary lights of the space. The wooden floor and the warm paint finishing of the ceiling that generate the mild texture of the refreshing circumstance.



廚藝教室

The cookery classroom

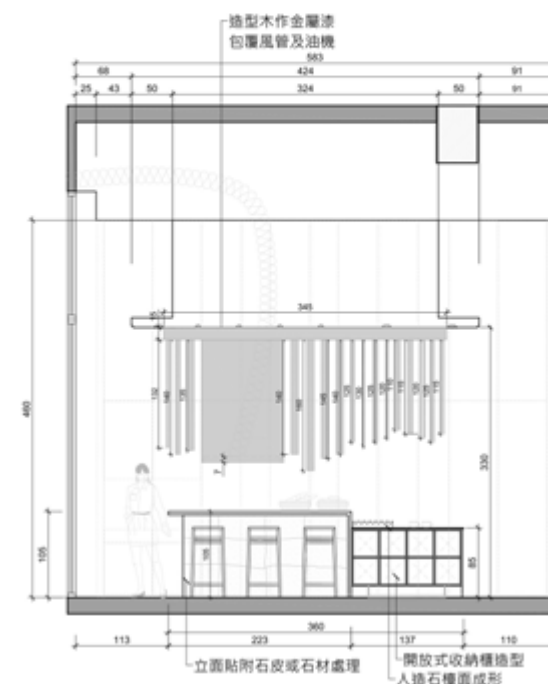
面積不一的九宮格配有往上照明的燈源，而在格狀外框中，尚有向下的LED光源；除去上述兩種光照方式，塊體中央更設有四處照明，兼顧環境氛圍和機能性，供使用者自由設定場地氣氛。和健身房相同，廚藝教室牆面為義大利塗裝漆，珠光色的漆面隨著光影和觀看角度變化畫面，晶瑩綠光映於眼中，釋出原初純真感。

將工作區和中島相結合的餐廚區，佔面最大的黑色塊處包藏了抽油煙機和其管路，配上左右具高低與寬細差別的鐵件，顯出動感波浪造型。看往吧檯中島處，不僅有用做區隔的石材，更有使用義大利進口奈米智慧材 FENIX的素色檯面，面對廚房工作造成的輕微刮損有修復效果，便於長久使用。

The ceiling of the square grid pattern is equipped with the illumination of upward and downward lighting sources, as well as the recessed lights. Take the advantages of the multifarious functional lights that can be freely adjusted to bring about the spatial atmosphere of different situations. The wall surface of the cookery classroom makes use of the Italian paint the same as the fitness center. The pearlescent paint changes with the light and shadow and the viewing angles, and the crystal green luster reflects the pure plain texture.

The preparing area is combined with the kitchen island, the above set up the kitchen ventilator and the pipelines, further equipped with black iron pieces of different height and width, which creates the dynamic feature of waves. The kitchen island is divided into two parts with a stone board and the imported FENIX countertop from Italy. The intelligent material is convenient to maintain and durable for usage.

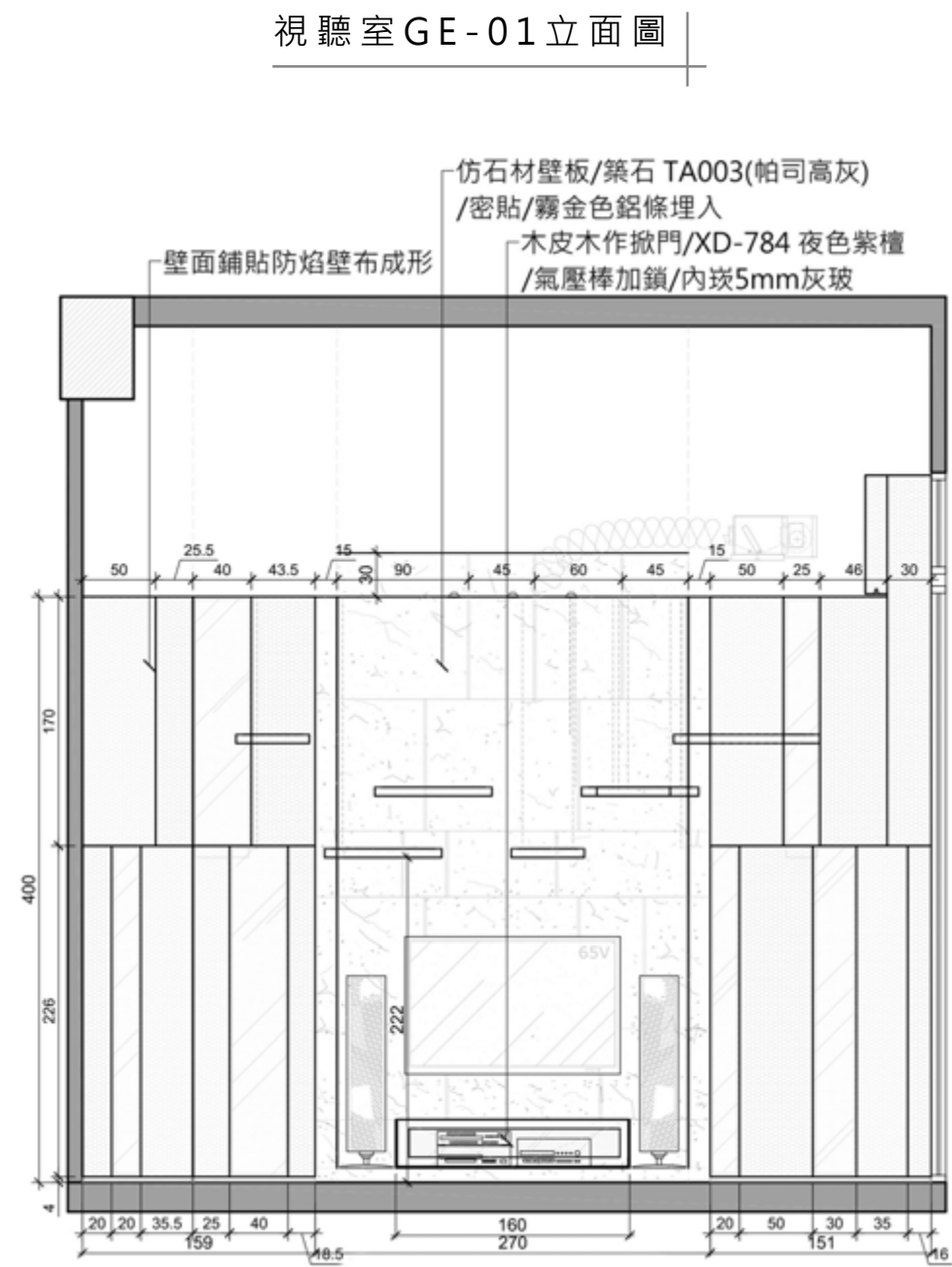
廚藝教室FE-01立面圖



山瀾暮嶼

Monolithic Palace

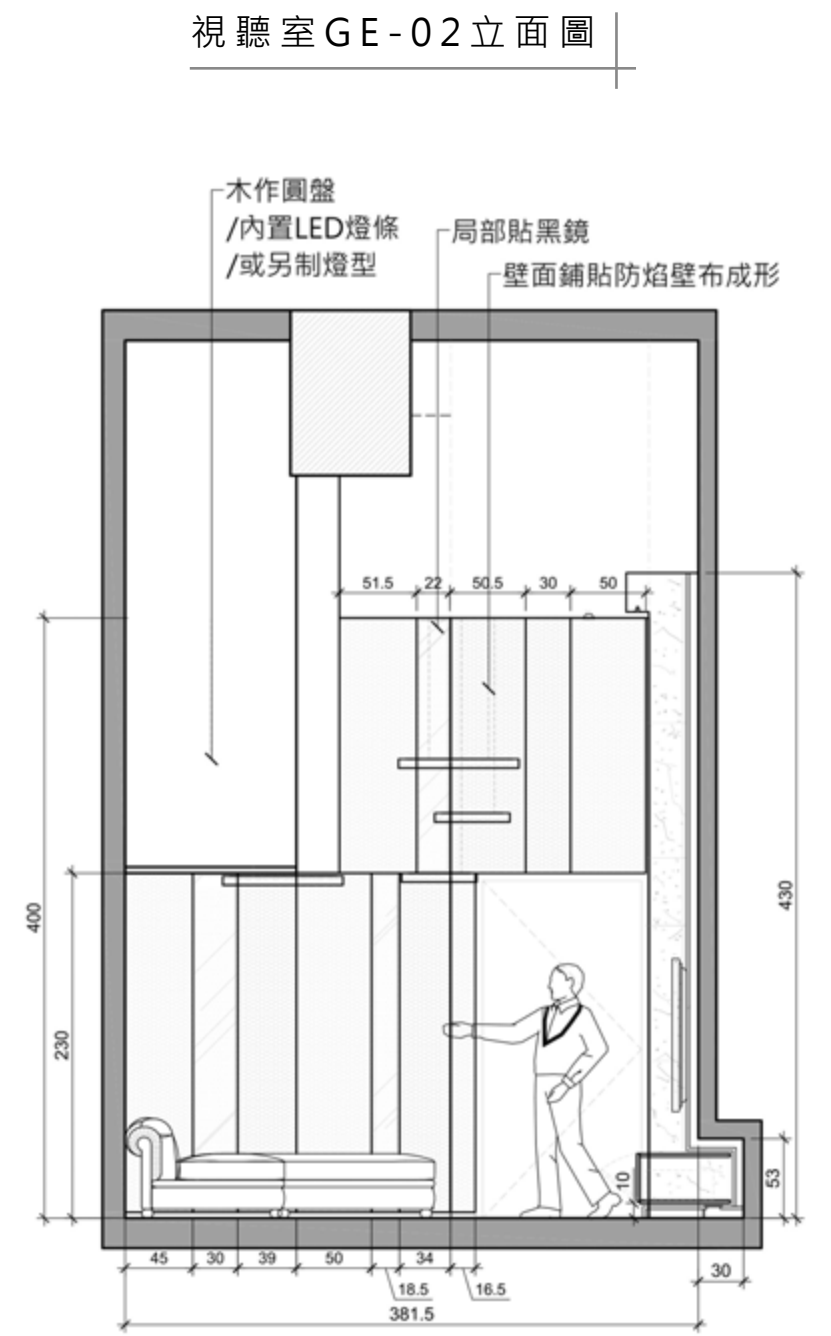




The audio-visual room

樓梯間佔比三分之一的視聽室，必須在兩米餘內設計出必須的造型與配備，設想視聽室需要的燈光氣氛，採懸掛式的多彩木作圓盤多數往下，且可調光，部分往上照明，兼顧沙發區所需的休憩情調，以及區外移動所需的燈光。

Due to the small plot of the audio-visual room, which is partly underneath the staircases. The design team hopes to meet the specific requirements of the lighting atmosphere, audio equipment, and the layout within around two square meters, therefore, hang up several colorful wooden round lights, hence constructs an unwind area of lounge charm; and the adjustable lights give out sufficient brightness for moving while needed.



山瀾暮嶼

Monolithic Palace



脫出風格框架 重現自然大氣

Depart from the style limitation and construct an enormous natural scene

華人
金創獎
TAIWAN
GOOD DESIGN
AWARD