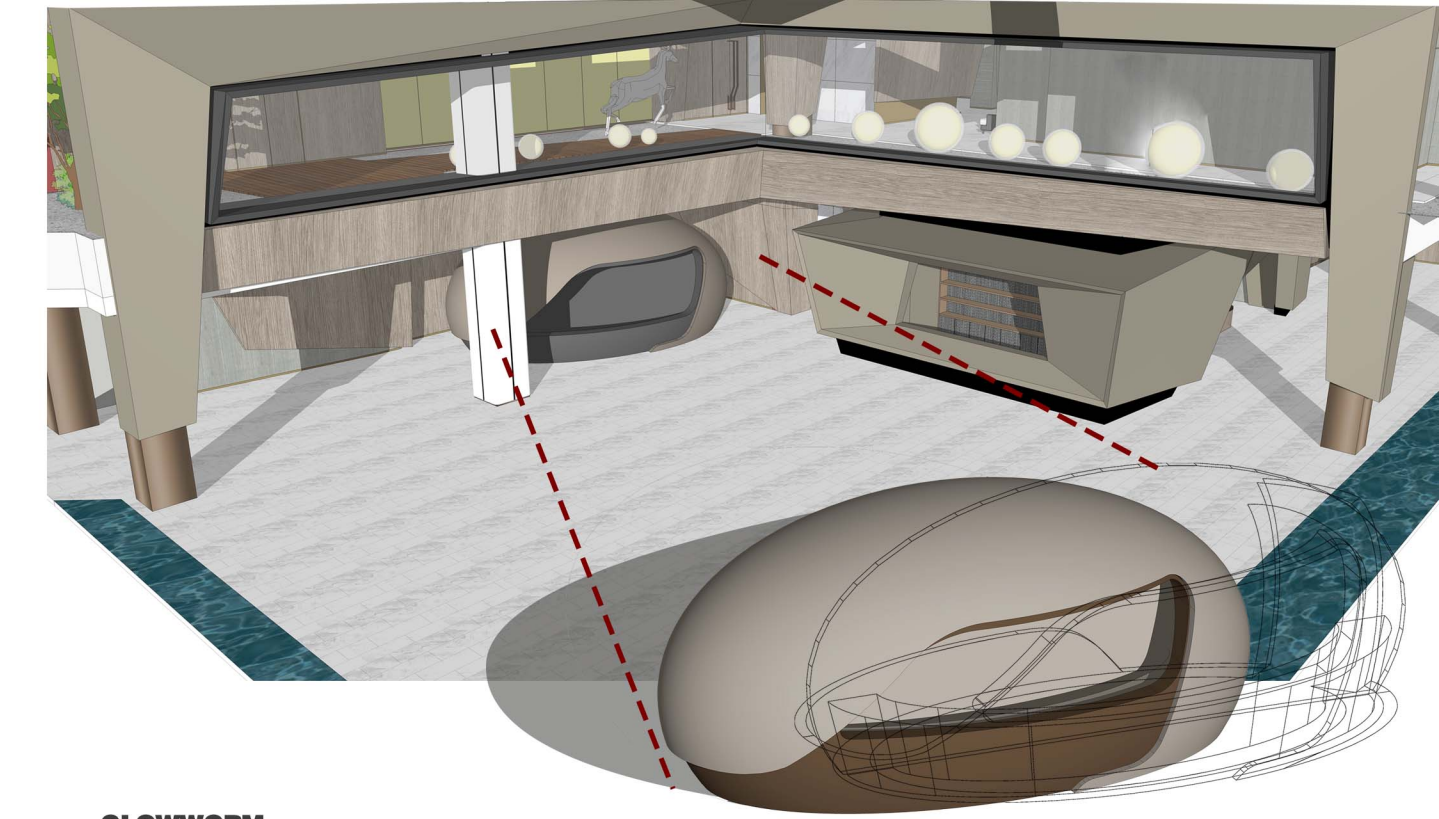
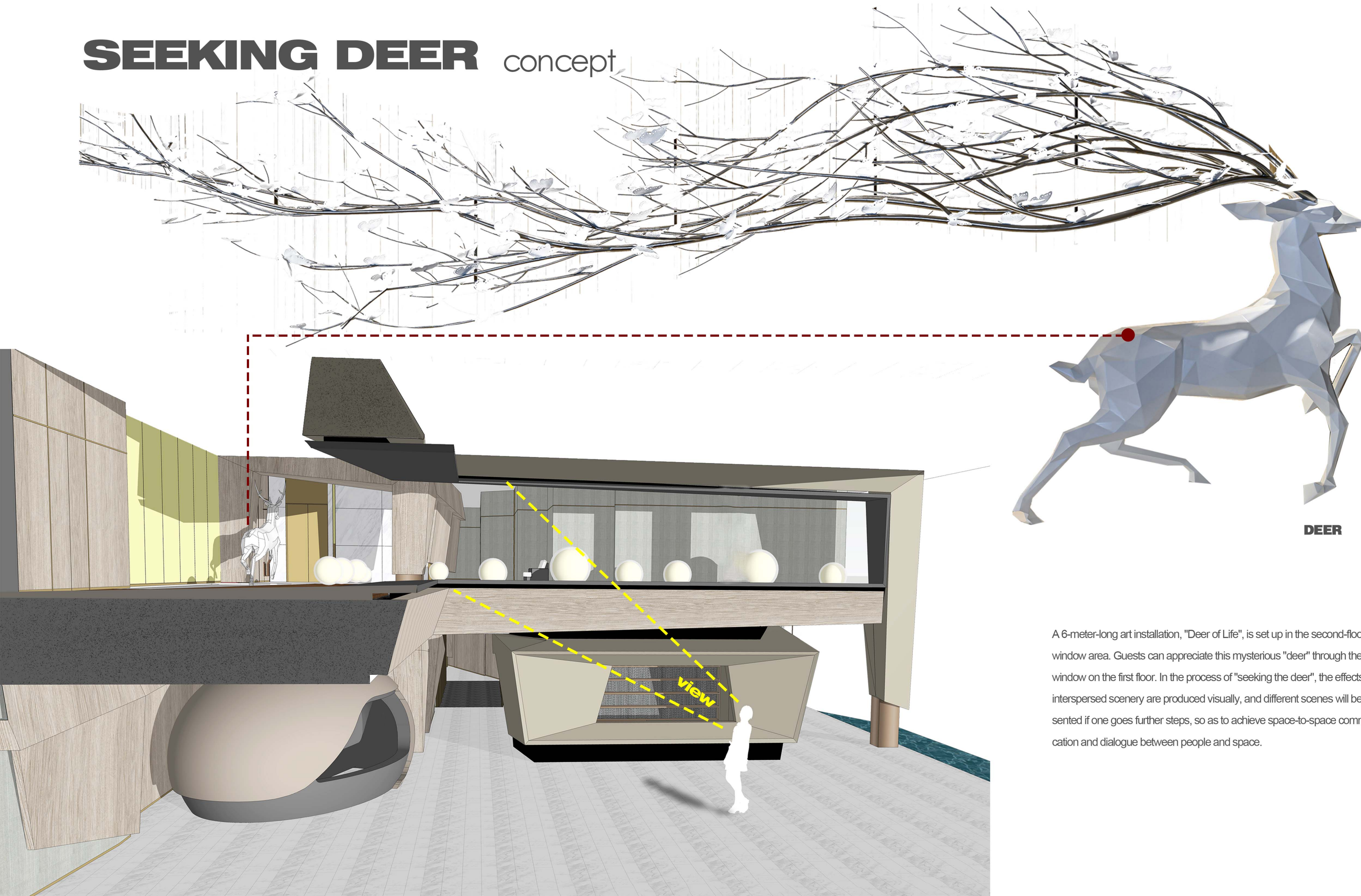




SEEKING DEER

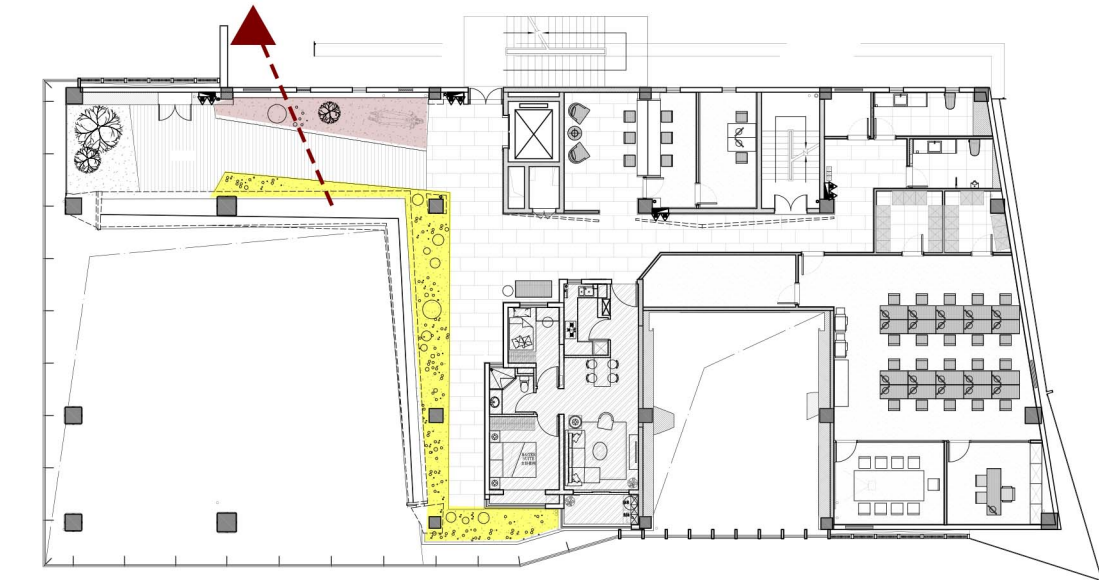


# SEEKING DEER concept

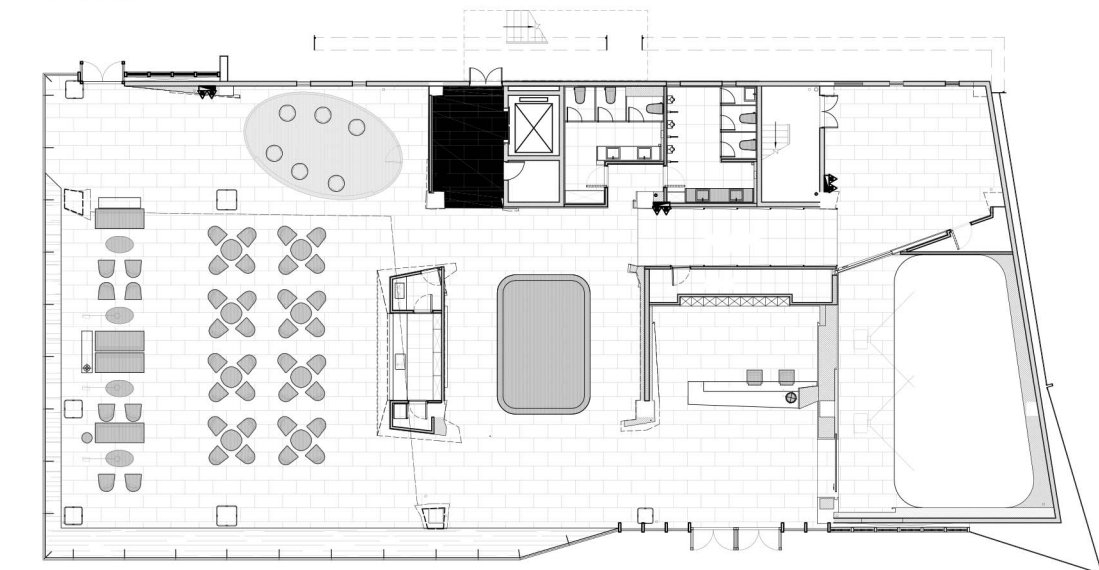


GLOWWORM

BAR



2F PLAN



1F PLAN

A 6-meter-long art installation, "Deer of Life", is set up in the second-floor window area. Guests can appreciate this mysterious "deer" through the window on the first floor. In the process of "seeking the deer", the effects of interspersed scenery are produced visually, and different scenes will be presented if one goes further steps, so as to achieve space-to-space communication and dialogue between people and space.



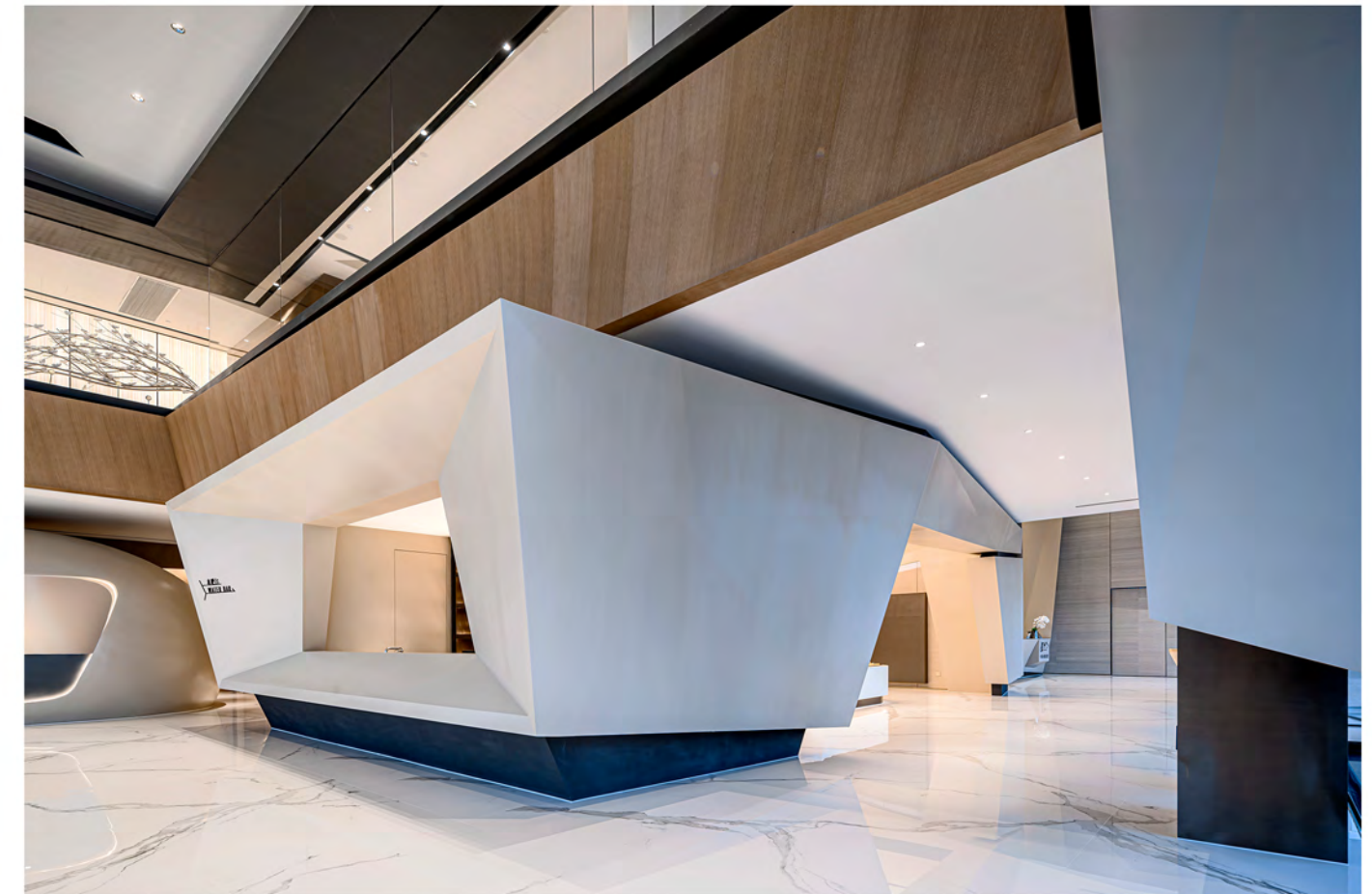


## SHOWCASE

visual connection, breaking boundaries

The conversation area on the first floor is a two-story empty space. The visual perception is the basis of the space experience. The designers break the definition of the space on the second floor with a large-scale floor-to-ceiling window, and break the dullness of the original solid wall with pure methods. And through the contrast between the virtual and the solid produced by the glass material, it forms an ethereal and vivid space beauty, achieves a visual connection, and forms a display center with a "contemporary art museum" experience.







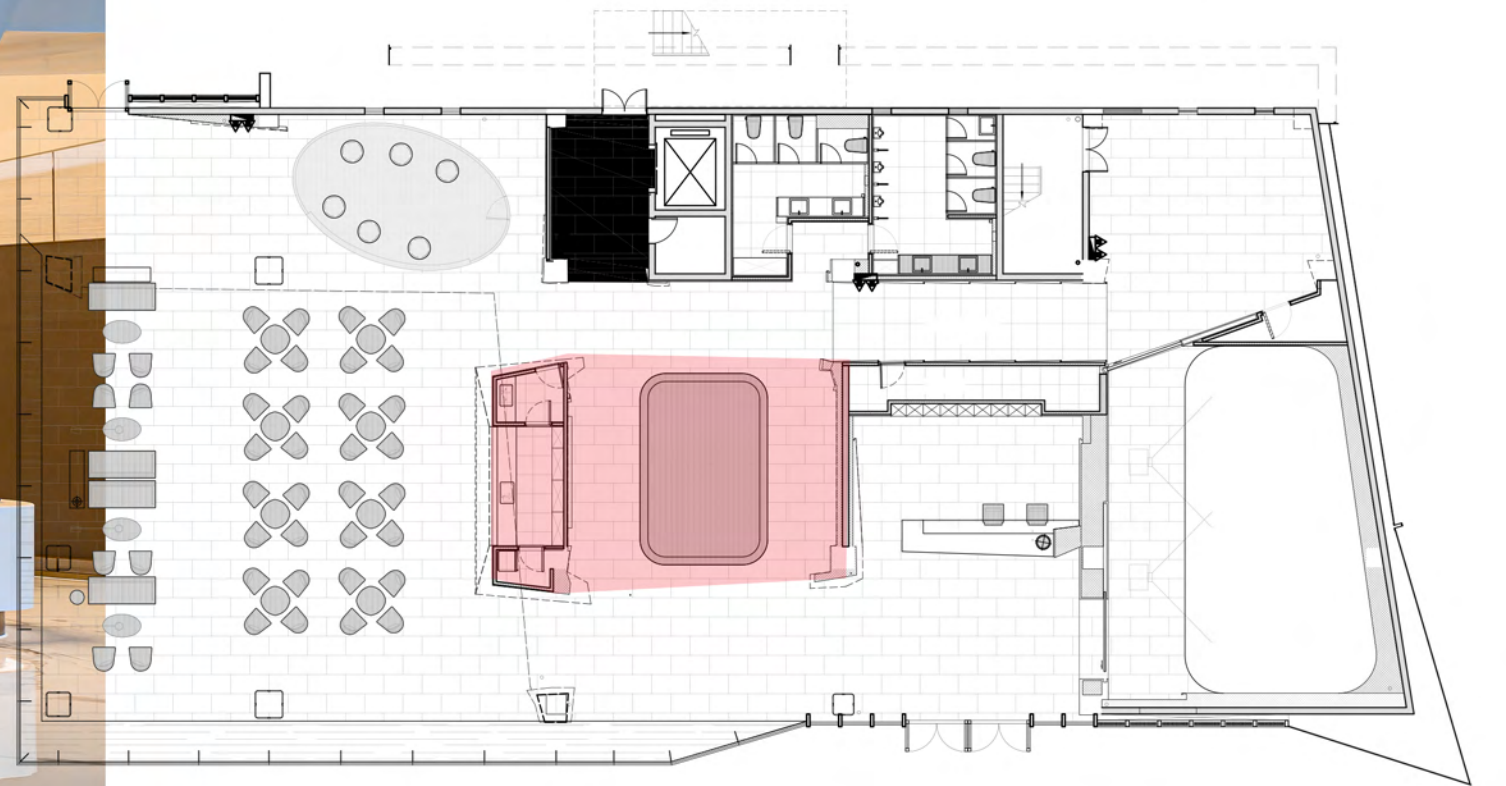




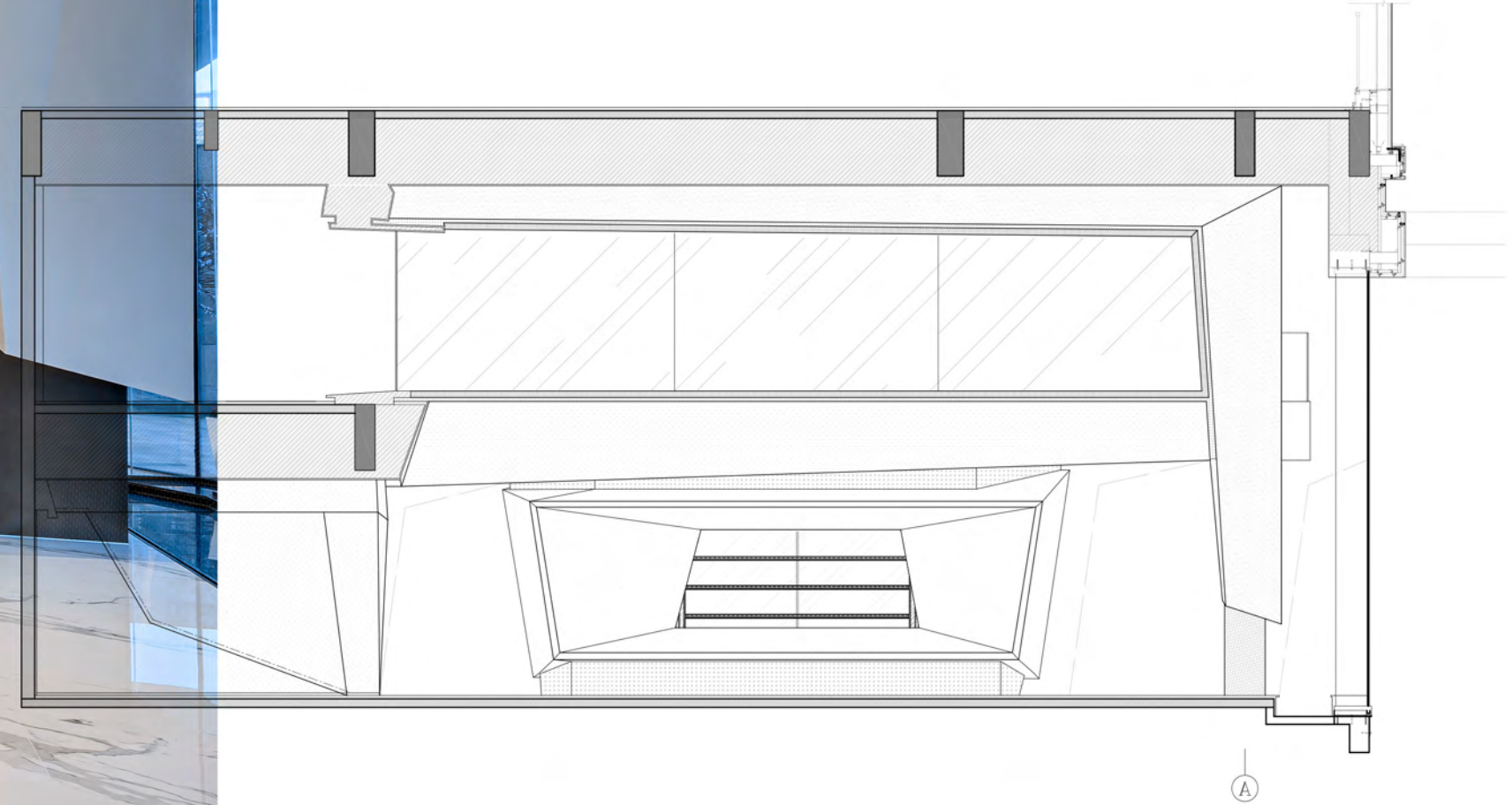


A 6-meter-long art installation, "Deer of Life", is set up in the second-floor window area. Guests can appreciate this mysterious "deer" through the window on the first floor. In the process of "seeking the deer", the effects of interspersed scenery are produced visually, and different scenes will be presented if one goes further steps, so as to achieve space-to-space communication and dialogue between people and space.

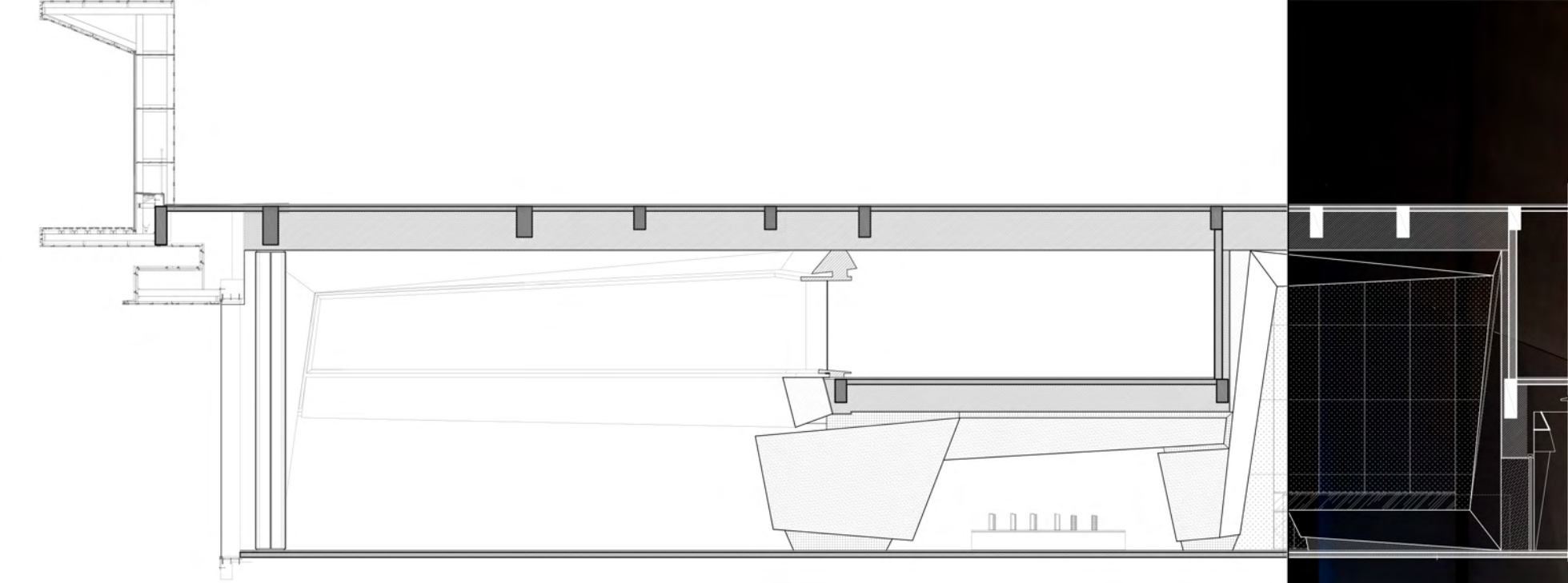












Into the lobby, ultra high carry empty let whole space be suddenly enlightened, ying ying waterscape swaying.





