



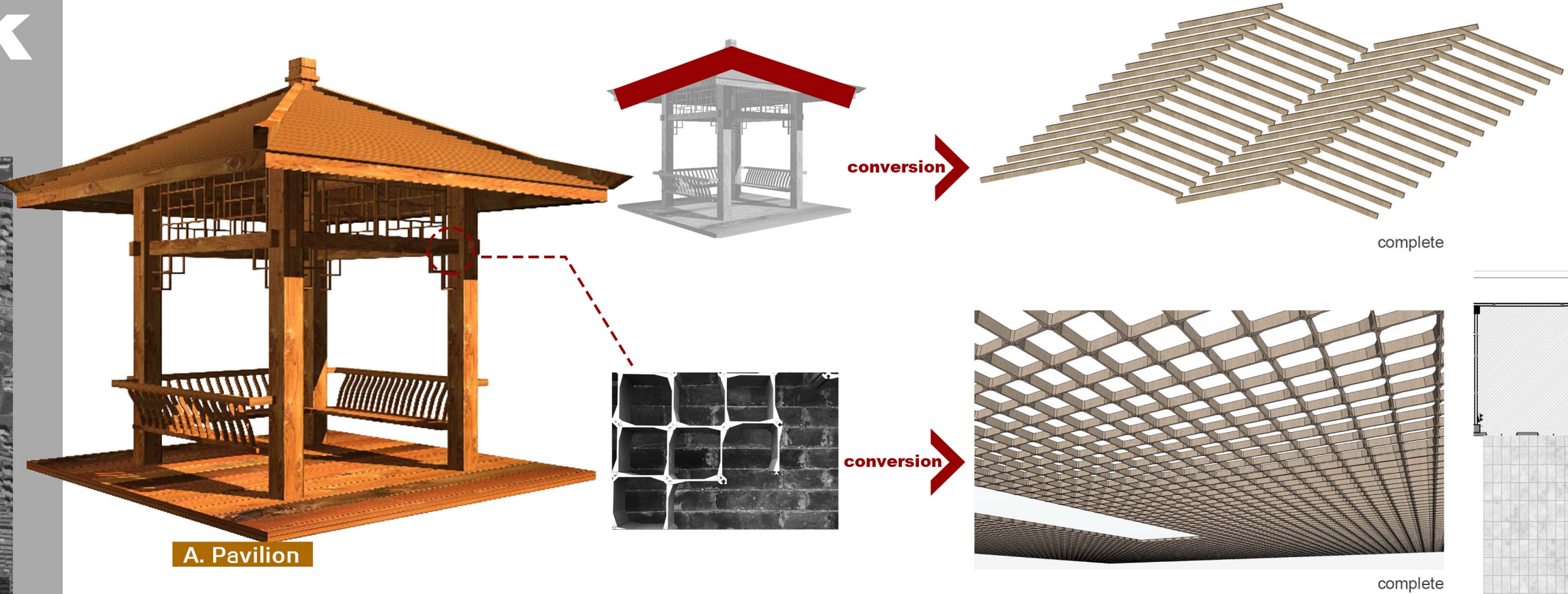
CENTRAL PARK

CENTRAL PARK

CONCEPT



The project is located at the intersection of Xijing Road and Xixi Avenue in the high-tech zone of Xi'an, next to Xi'an's largest urban ecological park, about 1700 mu(about 113.4hectares), and has become a natural landscape resource for the project. Every inch of land and every plant has got a very poetic expression. The designers hope to use the "Central Park" as the theme, combined with the guest line, and use the "Introduction, elucidation, transition, and summary" design method to create a reception center with park experience.



A. Pavilion



B. falling leaves



C. Screen

conversion

conversion

conversion

conversion

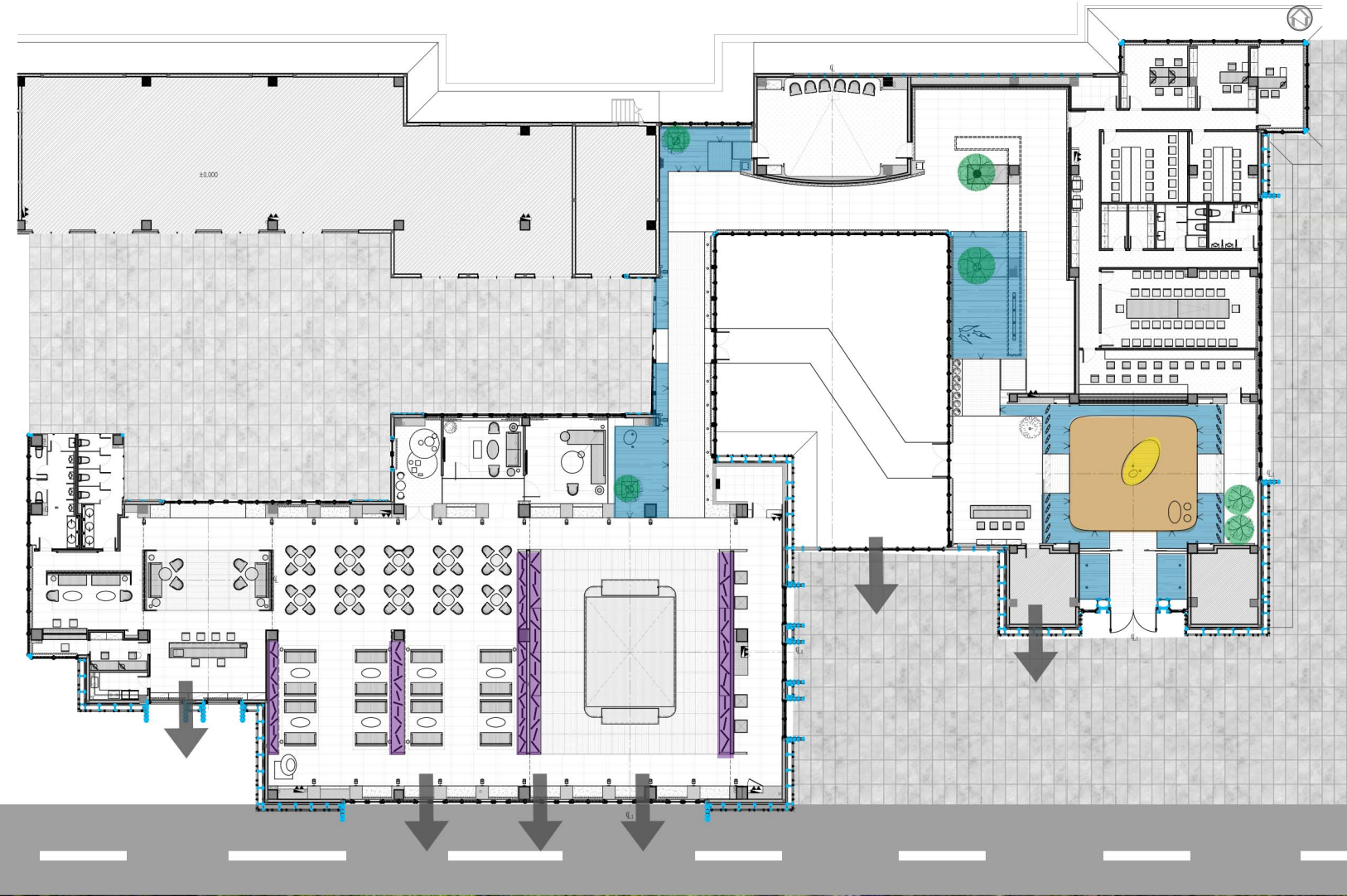
complete

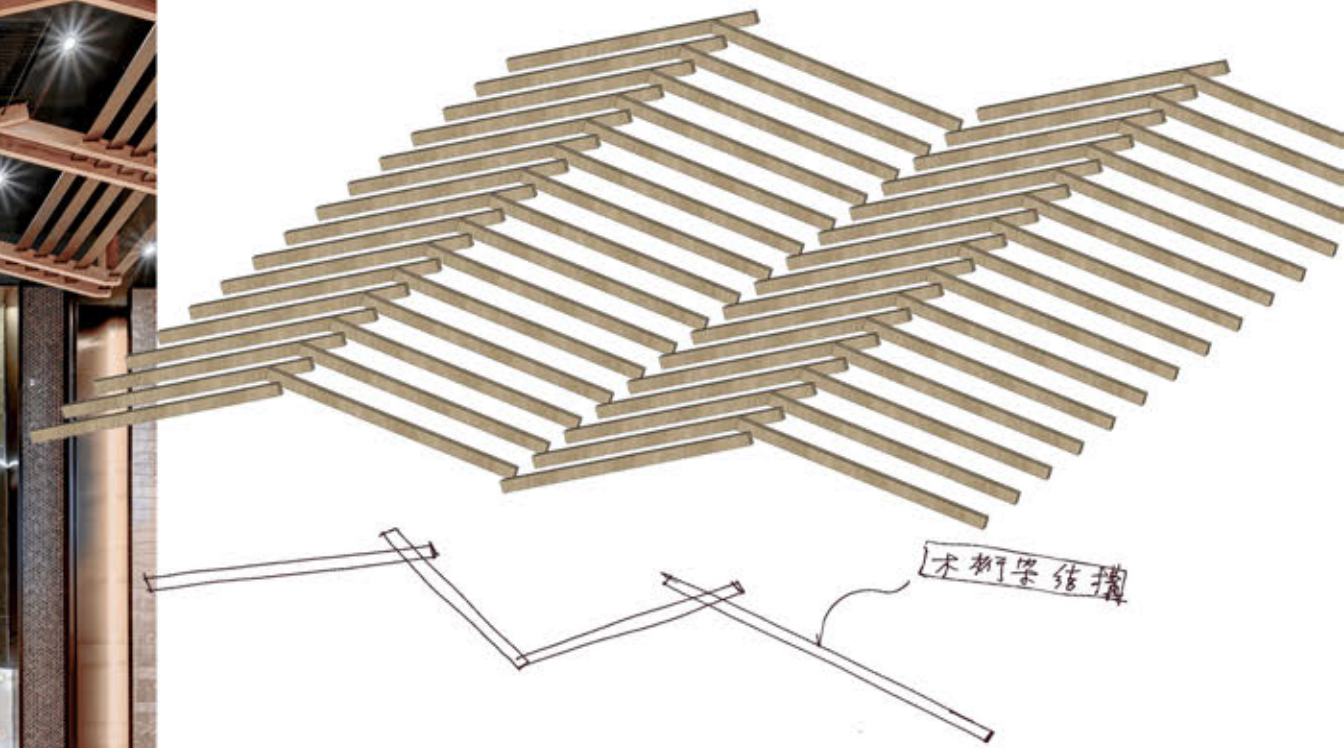
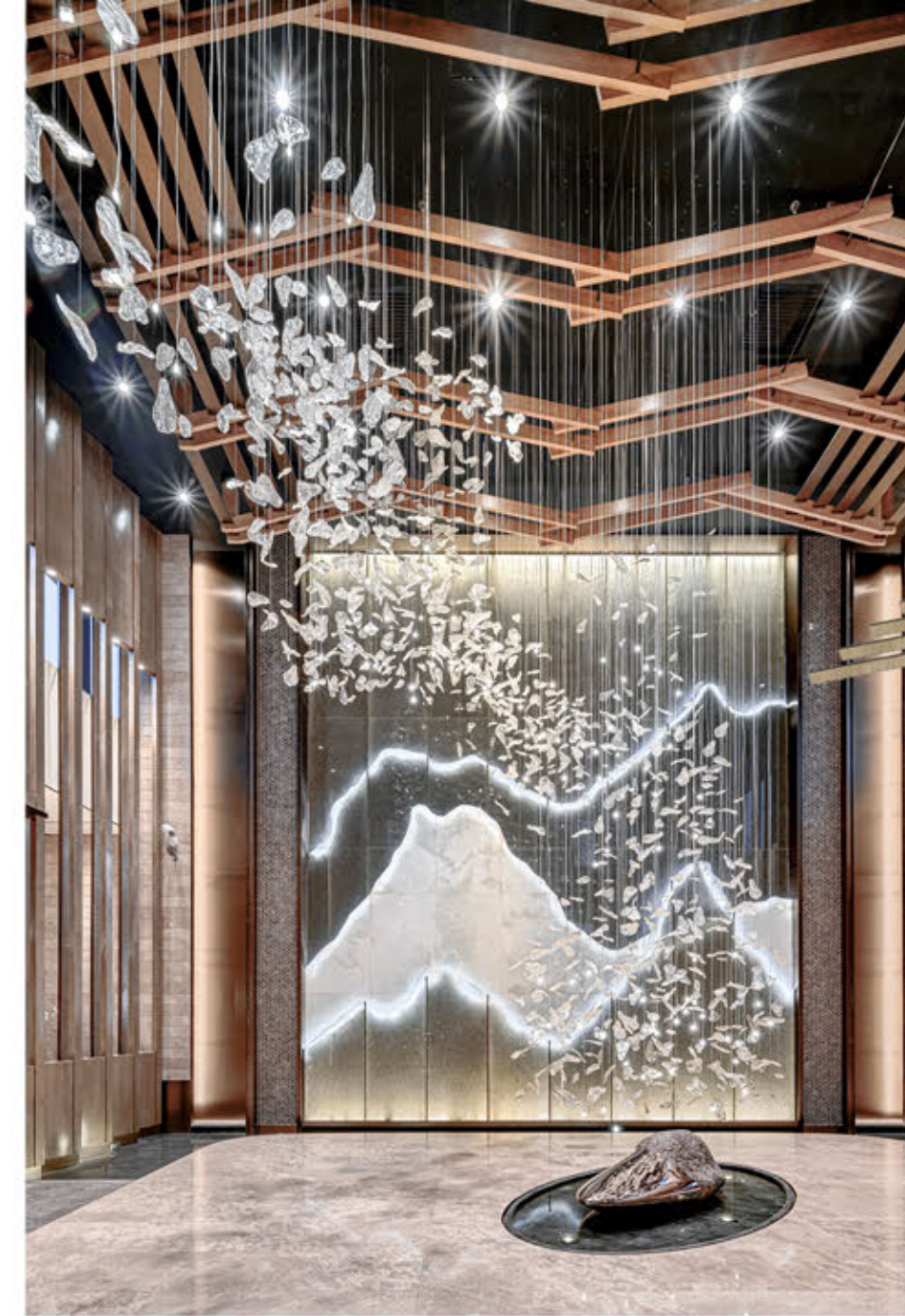
complete

complete

complete

Introduction. When you first enter the reception center, as the beginning of the creation of a spatial sequence, the designers use a set of "wood truss" structures as ceilings in the area of the entrance lobby to form a pavilion shape. The pavilion was a place for pedestrians to rest in ancient times. As an old Chinese saying goes: "The pavilion is where people stop for a rest and gathering". Integrating eastern philosophy and art into design, it constitutes a dialogue between tradition and modernity.



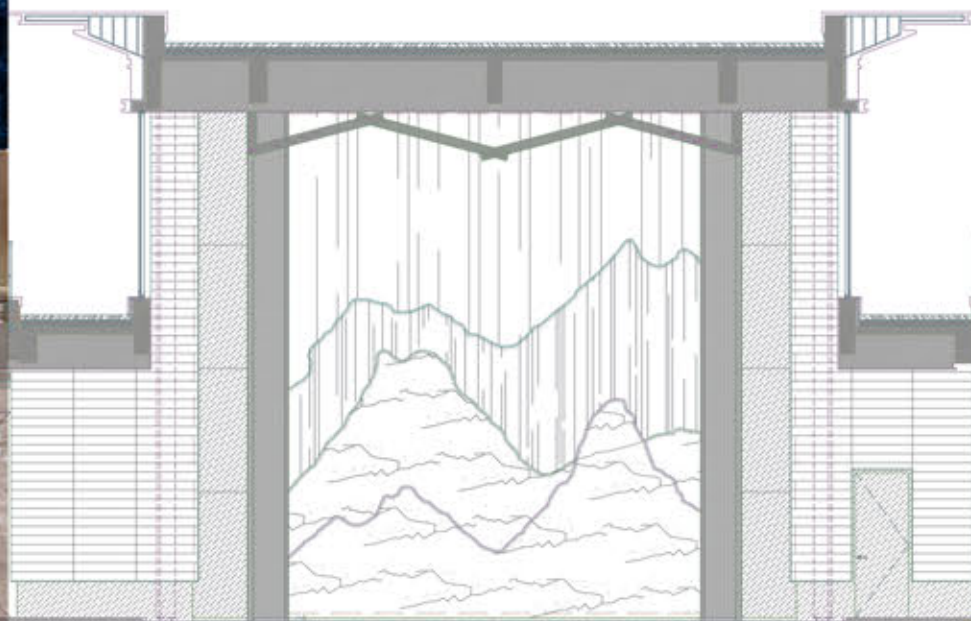


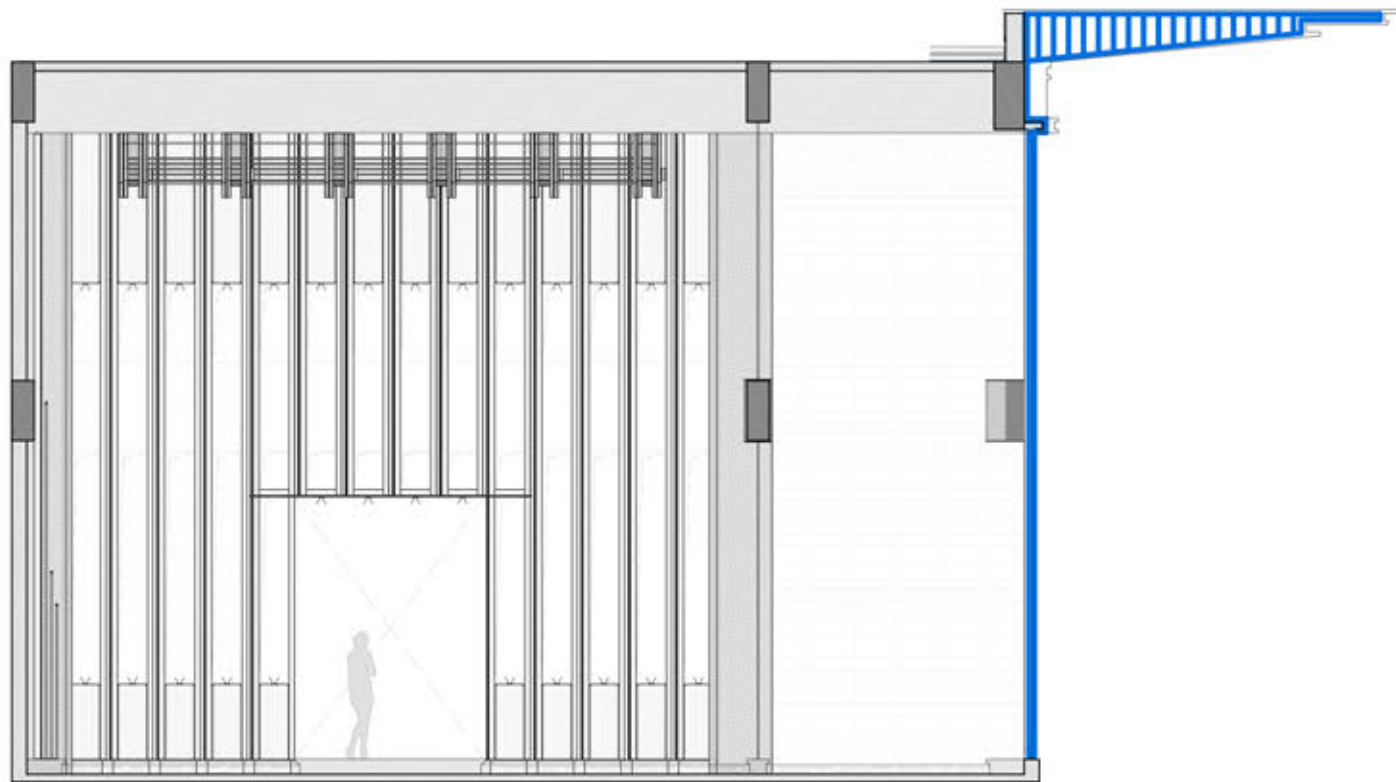
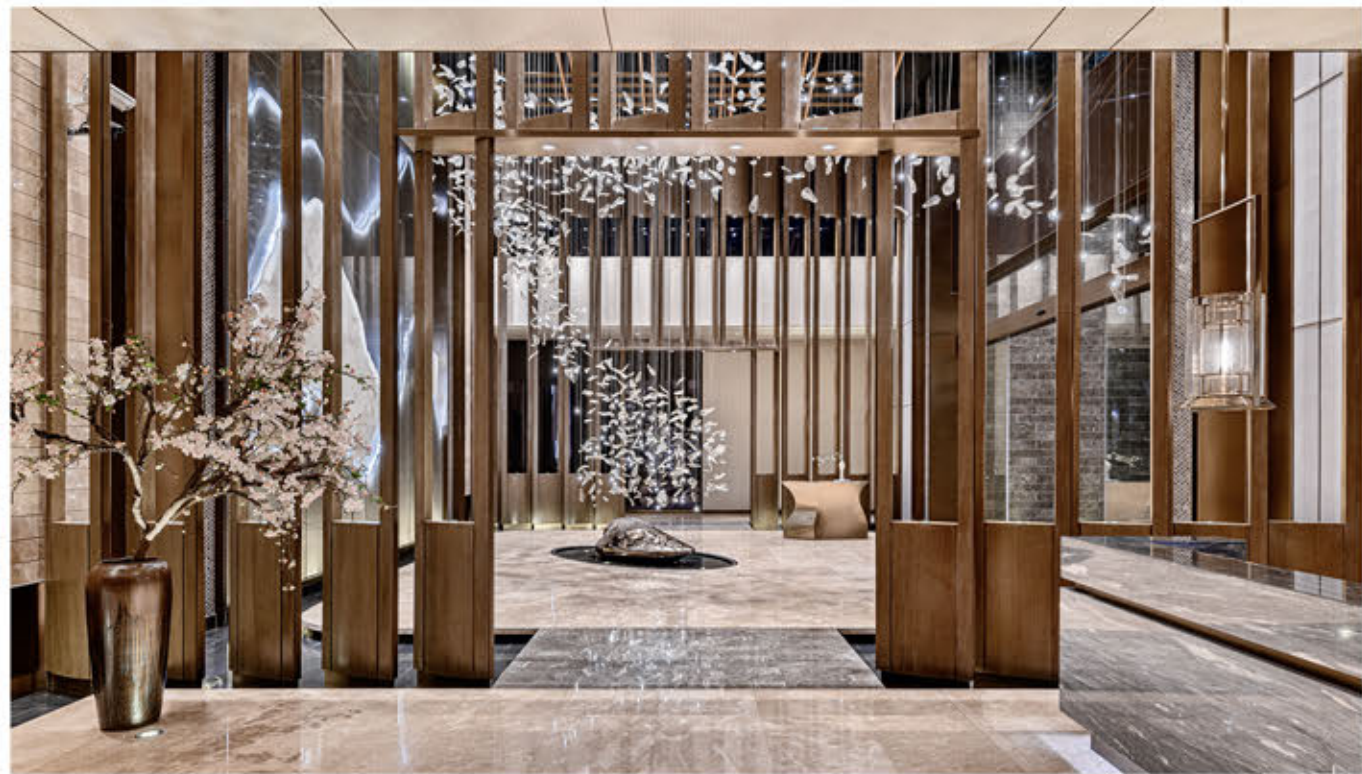
INTRODUCTION-BEGINNING PAVILION

Introduction. When you first enter the reception center, as the beginning of the creation of a spatial sequence, the designers use a set of "wood truss" structures as ceilings in the area of the entrance lobby to form a pavilion shape. The pavilion was a place for pedestrians to rest in ancient times. As an old Chinese saying goes: "The pavilion is where people stop for a rest and gathering". Integrating eastern philosophy and art into design, it constitutes a dialogue between tradition and modernity.

ELUCIDATION -EXTENSION FALLING LEAVES

The glazed leaf installation art runs through the entire space to create a progressive space charm. From the side of the foyer, the leaves begin to fall, and then to the foyer ceiling, and finally falls in the foyer pool. The orderly layout pendant design looks like that as if the leaves blown into the space by the wind. The charm not only plays an artistic role in the space, but also plays a role in "undertaking" the next space.





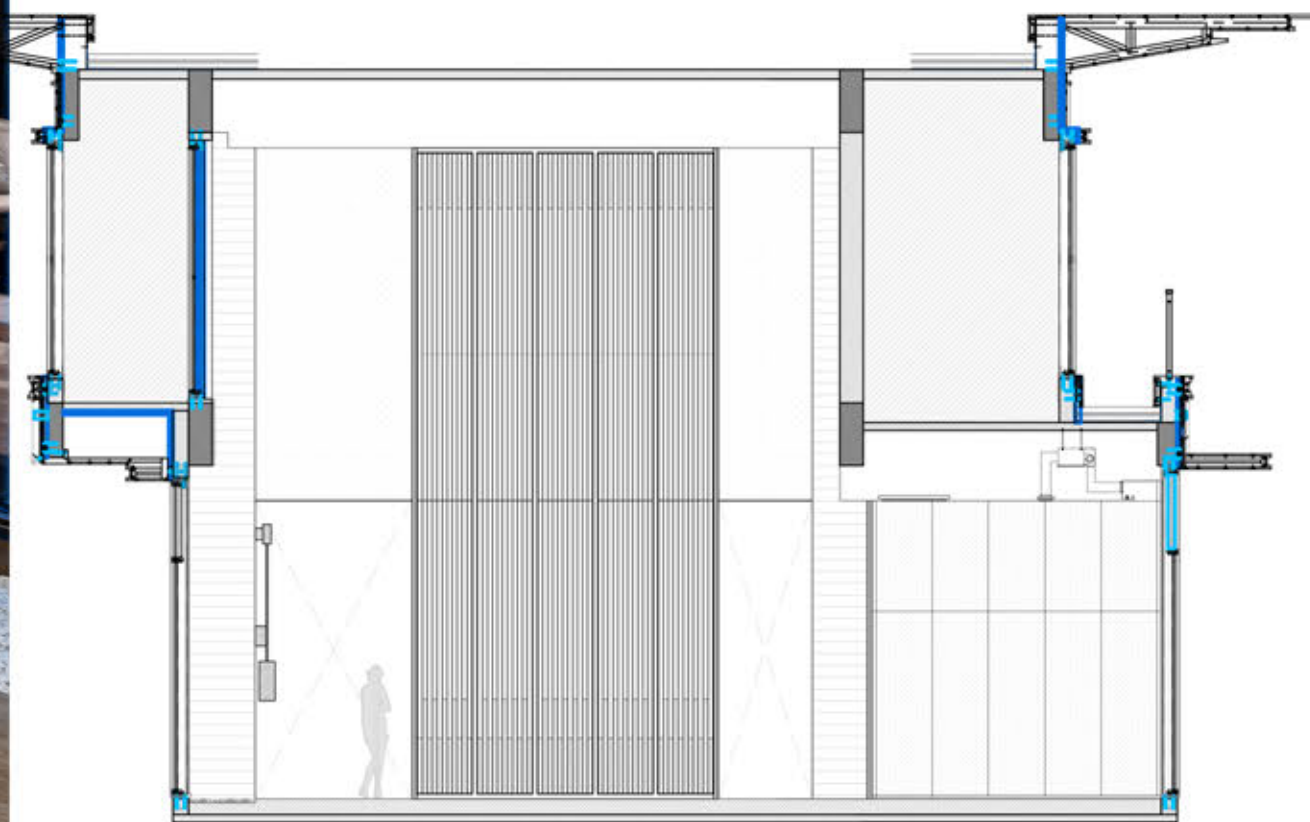








Transition. Changes in the spatial sequence begin to give a new sense of freshness. With the pool promenade, the water has been connected in series to the VIP room. Light and shadow pass through the wooden grille, and the waterscape is reflected in the water, further displaying the flexibility of the space. The flowing corridor is in the glimpse of the lake, various spaces are also penetrated by it.





Summary-Return: Lonely Tree

Return. Everything comes to tranquility. The fallen leaves return to the soil and turn into spring mud, nourish a lone begonia tree, the begonia tree is elegant, and the flowers are blooming. Since ancient times, it is a famous flower that is appreciated by both the vulgar and the common. It has been known as "flower goddess" "concubine of flowers" and "noble flower". They are often planted with magnolia, peony, and osmanthus in the royal garden, forming the artistic conception of rich and noble when you have begonia and magnolia under the roof.

