



WAVE WHISPER



CATALOGUE

- 01** | UNIQUE PROPERTIES / PROJECT EXPLANATION
- 02** | INSPIRATION
- 03** | PRODUCTION OR REALIZATION TECHNOLOGY (AND MATERIALS)
- 04** | SPECIFICATIONS / DIMENSIONS / PACKAGE / TECHNICAL PROPERTIES
- 05** | OPERATION / FLOW / INTERACTION



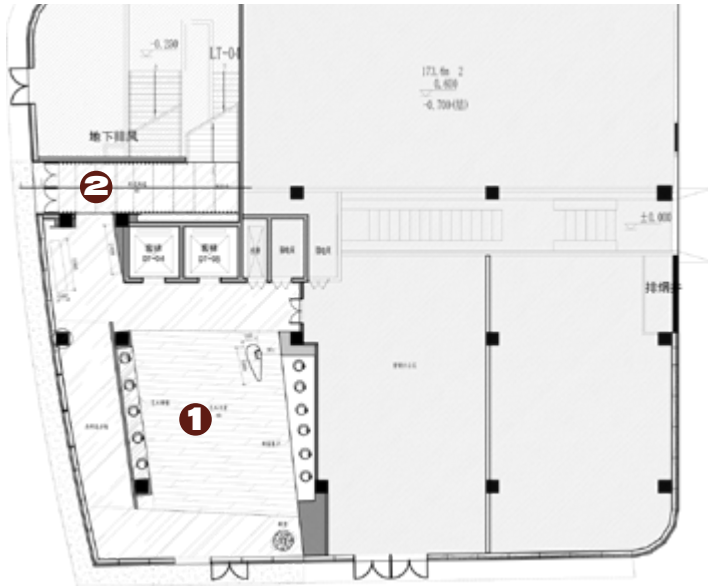
1-Reception hall



8-Toilet



7-Accounting office



6-VIP



2-"Space-Time Tunnel"



3-Bar



4-Sofa area



5-Kids area



01 UNIQUE PROPERTIES / PROJECT EXPLANATION

A. Geographic Advantage:

The project boasts a prime river view, facing the Ningbo "Yong River," one of the eight major river systems in Zhejiang Province. The "Yong River" runs through the entire city of Ningbo, serving as the city's main economic lifeline.



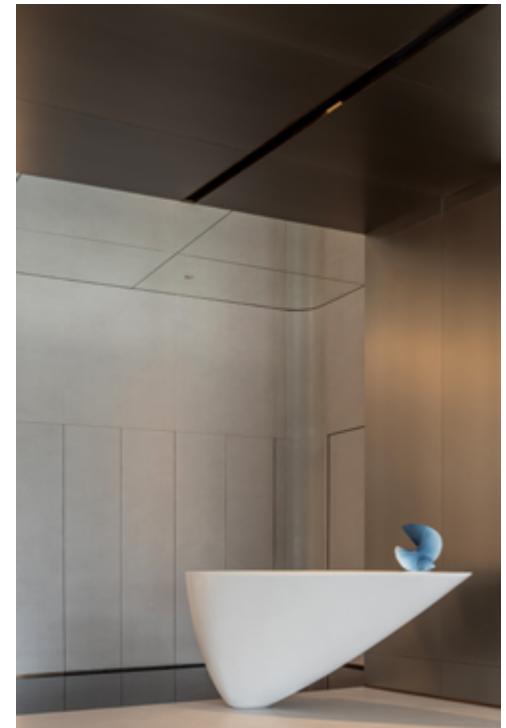
B.Purpose:

The project is positioned as a world-class riverside cultural and creative industry core area. Drawing inspiration from the rhythm of the local river waters and the "flowing form of river water," it integrates innovative methods with artistic trend-setting IPs to create an urban trend-setting art center. It aims to construct a functional and interactive urban landmark, enriching the city's developmental drive.









"Sculptural Ice Peak Stool"



Time Tunnel



WAVE WHISPER Concept



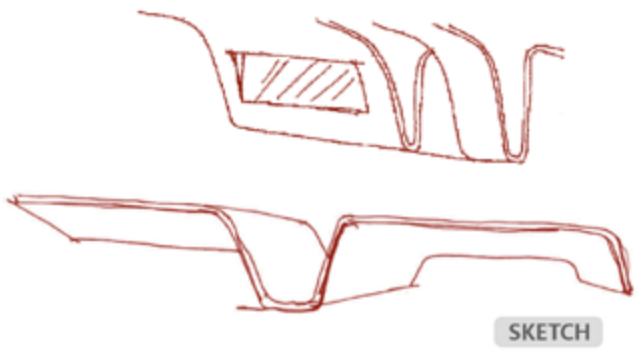
02 INSPIRATION

1. Rhythm of the River

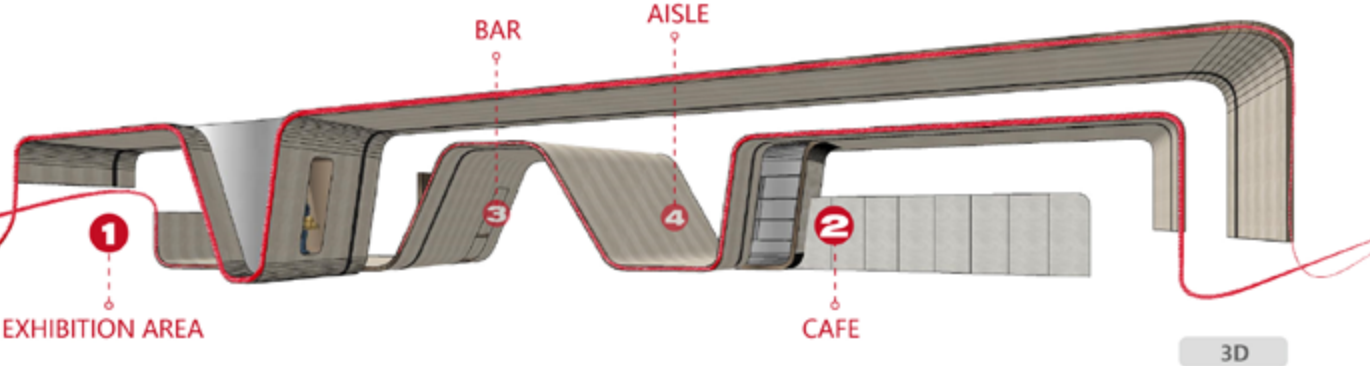
The project faces the Yong River, the economic lifeline of Ningbo, possessing prime riverside natural resources. This case hopes to bring the rhythm of the river into the interior, merging nature with the indoor environment.

2. Dynamic Space

Extracting the rhythmic form of the river water, new materials are utilized to integrate the space and the sky-earth curtain walls, presenting a dynamic urban space reminiscent of the flowing river water.



SKETCH

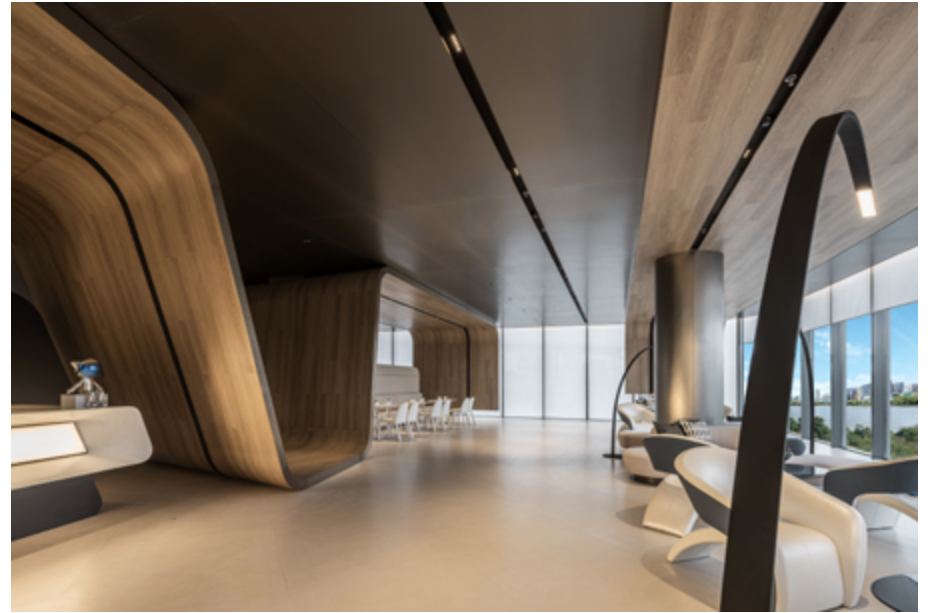


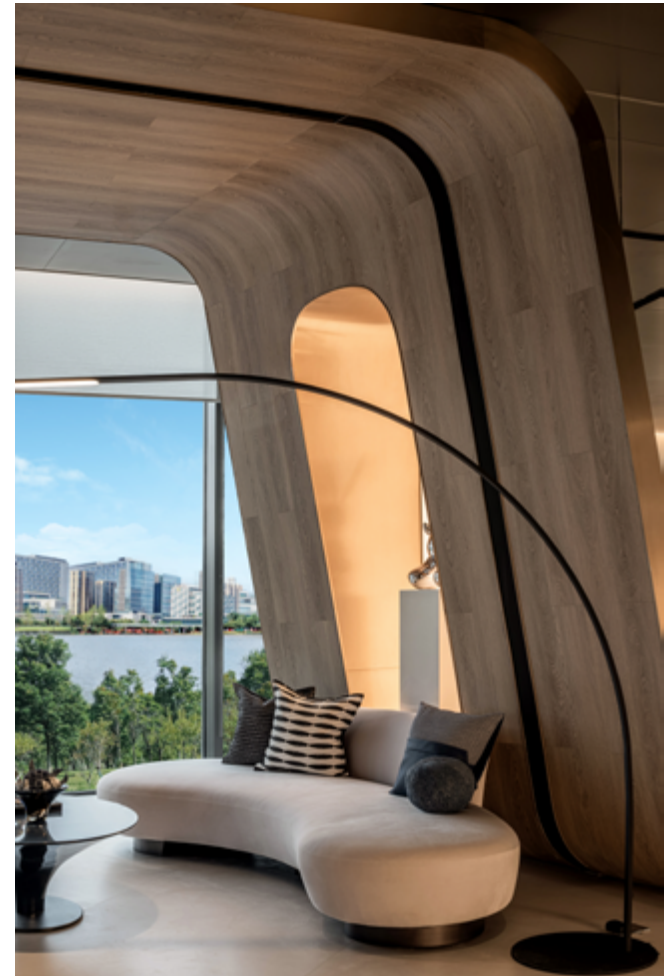
3D



Bring nature indoors
enjoy the view of the river







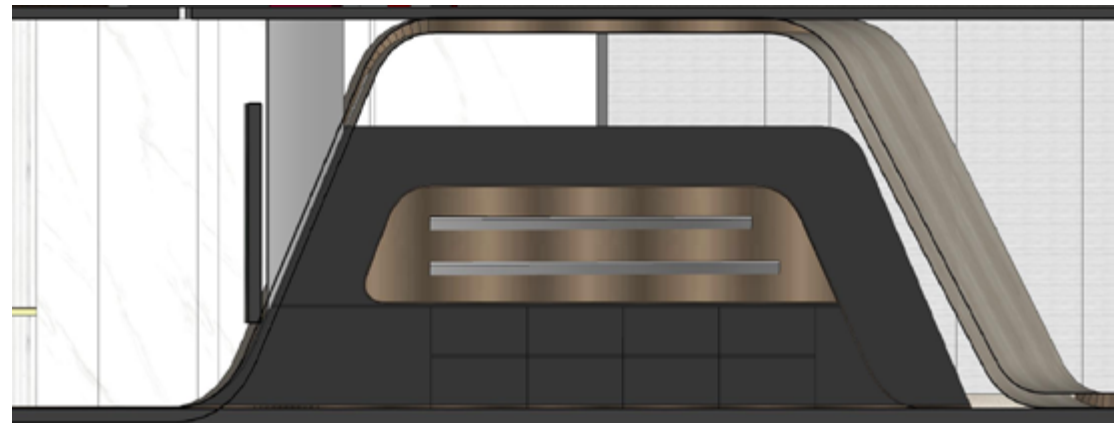
Nature blends with the interior





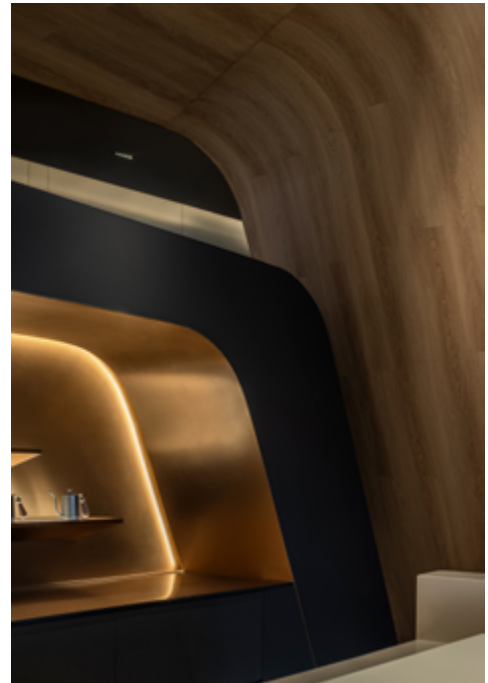
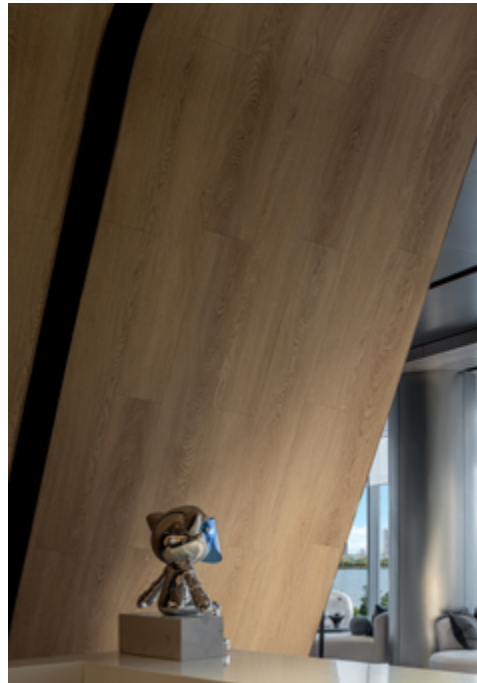


sketch











03.PRODUCTION OR REALIZATION TECHNOLOGY (AND MATERIALS):

To ensure the space captures the dynamic movement of river water, the Belgian Lamett Swiss Rigi Mountain Oak SPC flooring is employed, featuring four main characteristics:

- 1.**Lightweight** - Suitable for ceiling suspensions, wall decorations, and offering rich performance features;
- 2.**Wear and Pressure Resistance** - High-density product suitable for flooring, offering wear resistance and impact resistance;
- 2.**Bendable** - The flooring includes a high-polymer elastic buffer layer in the middle, providing excellent elasticity and toughness. It can be significantly bent during installation, ensuring stability without deformation;
- 3.**Easy Installation** - The flooring system is glue-free and joist-free, allowing for immediate use upon installation, saving both time and costs.

These four characteristics achieve a harmonious unity between the ceiling and curtain walls of the project, perfectly presenting a harmonious spatial sensation of meandering river water.



Lamett Swiss Rigi Mountain flooring



Arc process







04.SPECIFICATIONS / DIMENSIONS / PACKAGE / TECHNICAL PROPERTIES:

The lamett SPC flooring, with dimensions of 5*178*1235mm, combines its material properties of being

1. lightweight, 2. wear and pressure resistant, 3. bendable, and 4. easy to install, with the extended length of 1235mm. This allows the material to stretch from the ground to the walls and even the suspended ceilings, ensuring a coherent and harmonious visual effect in the space. Achieving a harmonious unity between the floor, walls, and ceiling, it enhances the rhythmic sensation of flowing river water throughout the space.





05. OPERATION / FLOW / INTERACTION:

1. Iconic Space Located beside the Yong River which symbolizes the economic and cultural pulse of Ningbo city, the project leverages the rare prime riverside view and the rhythmic form of the river water to create a dynamic indoor space, aiming to become an iconic space within the city.

*2. Trend culture IP
Integrate art tide play IP, enhance the sense of participation and experience of visitors, encourage cultural exchanges, and achieve social benefits.*





