

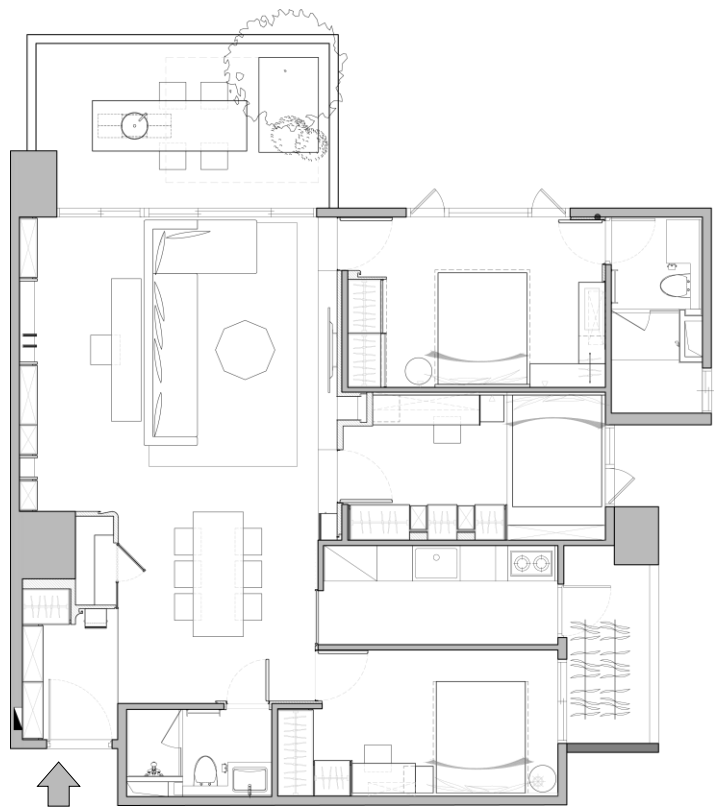


PURE HOUSE

單層住宅設計

華人
金創獎

TAIWAN
GOOD DESIGN
AWARD



平面圖



地點

臺灣 高雄市

坪數

37.5坪 | 124.5M²

格局

三房兩廳

材料

藝術塗料．空心磚．植生牆．鐵件．薄板磁磚．木作特殊玻璃．油漆．
超耐磨地板．系統櫃．傢俱飾品

城市中的喧囂，在轉動房門的那刻，一切仿佛沉靜了下來，只盼將身上累積一天的疲勞拋諸在門外，蜷縮在沙發的一隅，享受一個人的世界。

本案作為實品屋的表現，期盼做出不像實品屋的模樣，給予回到家的那一刻能有截然不同的感受。

故全案保持一個中心理念：
化繁為簡、能一就不要有二的精神。

At the moment when you open the door, the hustle and bustle in this city seems to be clam. All we want is to throw away the tiredness we have accumulated for a day. Curled up on the corner of the sofa is a perfect getaway from the bustling city and enjoy some me time.

As a model house, this design concept is hoped to make it look different from a model house, and give a completely different feeling the moment when you got home.

The whole design maintains a central idea: simplify the complex design and not having two materials if one can be done.





玄關以特殊花磚作為回家時的落塵區，在此刻暫足片刻整理儀容衣物，側面預留了大空間收納櫃兼鞋櫃，將凌亂的物件歸類整齊。空間中保留儲藏室的概念元素，結合玄關後區的過道空間，將其隱藏於屋子一角，而不顯突兀。

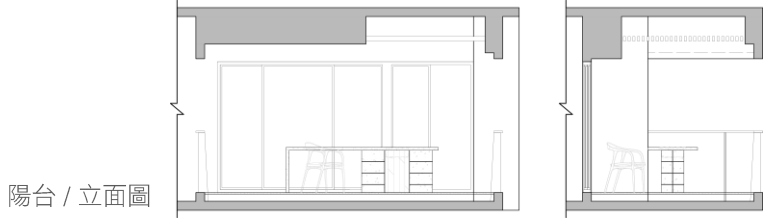
The porch uses special tiles as the dust-falling area when returning home. Take a moment to tidy up your grooming clothes. A large cabinet is reserved on the side to categorize messy objects neatly. The concept elements of the storage are retained in the space, combined with the aisle space behind the entrance, hide it in a corner of the house without being obtrusive.

公區活動空間讓靜態 / 動態 / 互動三者呈現三角動線，各自為域卻又互相連結，讓生活中充滿自在、舒適感。

The activity space in the public area presents the three dynamic lines of static, dynamic and interactive. Each being an independent space but connected to each other, making life full of freedom and comfort.

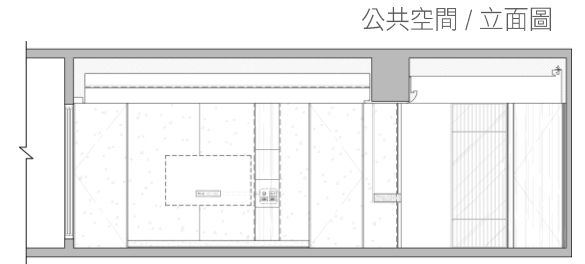
陽臺為高雄厝的大面預留空間，利用塑化木的肌理特性延伸室內木地板的語彙，使室內延展至外部空間，沙發 & 吧檯的雙重層次，依照使用需求可輕易的轉換兩者之間。

The balcony reserves space for the large area required by Kaohsiung House. Using the plastic wood deck to extend indoor wooden floor, so that the interior extends to the outdoor space. Although they are two separate and independent spaces, they are connected by the same elements.



陽台 / 立面圖





擴大主牆的面積效果 **Enlarge the effect of the main wall**

將磁磚的材質從牆面一路延伸到電視底座，最後連同地面也採用相同材料，使主牆的一體性及延伸性擴張。

此案的困難點在於主牆面同時有四個空間的開口，利用建築本身的缺點轉化為另一種可能性，利用無框門及隱藏的手法，將其藏匿在主牆造型內，利用色塊分割及材質轉化，創造完整的立面主牆效果。

Extend the material of the tiles from the wall to the TV stand, and also use the same material as the ground to expand the integrity and extensibility of the main wall.

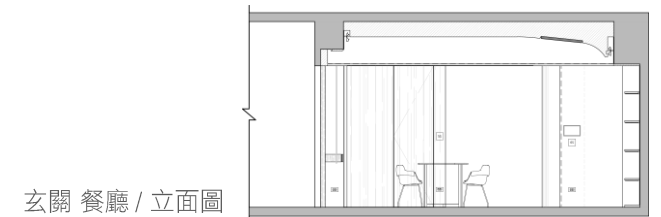
Since the main wall of the interior is an important interface leading to various spaces, the subtraction method is used to reduce the complexity of the room opening. The transformation between different materials is cleverly used to hide the door.



儲藏室的壁面切線 **Storage wall partition**

利用牆面的厚度做面的切割轉化，將原本為一面牆的壓迫感，斷開以簡化量體感。

Using the thickness of the wall to hide the linear lighting fixture to cut and transform the surface. The oppression of the wall is reduced to simplify the sense of volume.





讓白色於空間中央向外暈染 **Let the white elements blend out from the center of the space**

純淨、清透的材質、軟件穿插於各空間中，皆以令人舒適的配色呈現。

Pure, clear materials and furniture are interspersed in each space. All presented in a comfortable color scheme.

藝術家的手繪 **Artist's hand drawing**

整個空間強調自然、人文、簡約，於主臥室中讓藝術家手繪抽象藝術圖畫於背牆，體現一種沉靜的氛圍。

主臥休息區以低彩度的配色為主，讓屋主休息時感官不再受到強烈的顏色影響，讓視覺 / 精神放鬆下來，配以藝術家獨一無二的現場繪製主題牆面，取代傳統床頭主牆。

The entire space emphasizes nature, humanity, and simplicity. In the master bedroom, the artist has hand-painted abstract art piece on the back wall to reflect a calm atmosphere.

The master bedroom uses a low-color saturation color scheme, so that the owner is no longer affected by strong colors when resting. Let the vision and spirit relax. The bedside wall uses the artist's unique painting to replace the traditional bed back board.

主臥 / 立面圖

