

CIRCLE

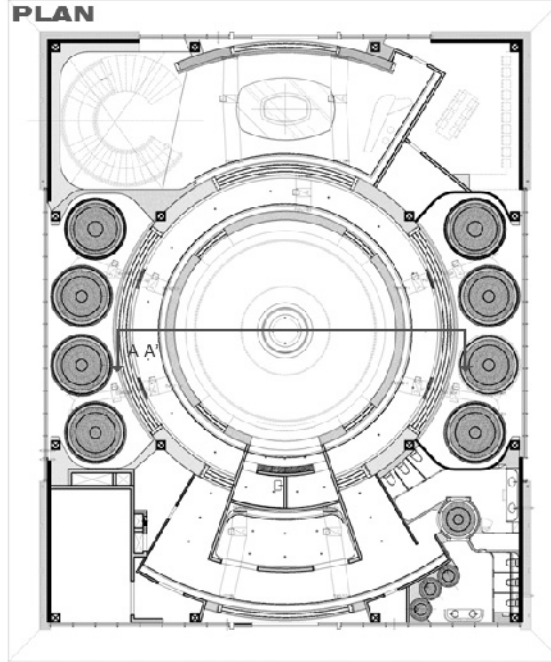
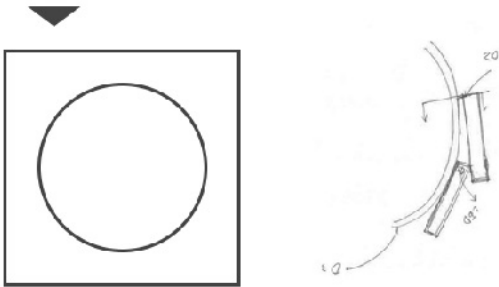
CIRCLE

CONCEPT

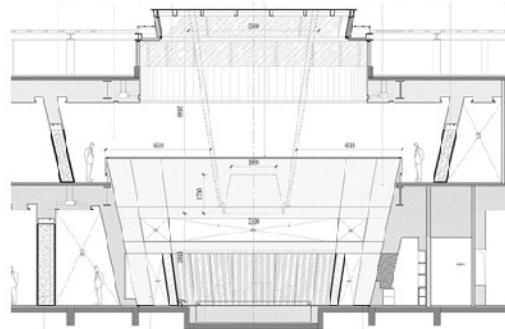


SQUARE SKY AND CIRCLE EARTH

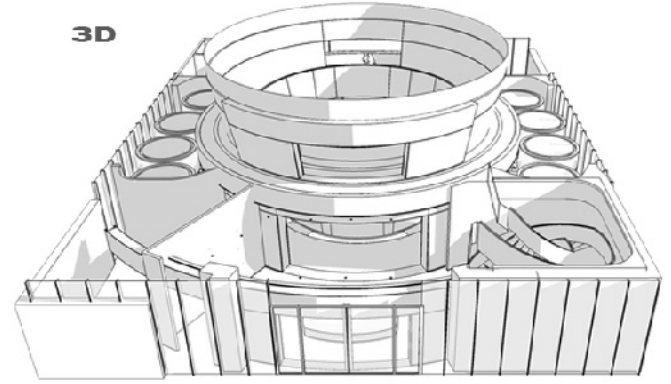
Knowing little about the earth, the ancient people thought the sky is circle and the earth is square, the sky covers the earth and the earth is supported by four columns. Modern people have proved sky is not circle but infinite large, the earth is circle, so it can be referred to as Square Sky and Circle Earth. This is the people knowledge and understanding of nature in the traditional oriental culture. The overall exterior wall is square and facing the sky while a circle mould facing the earth is made in the interior space which forms the concept of Square Sky and Circle Earth in a very modern way.



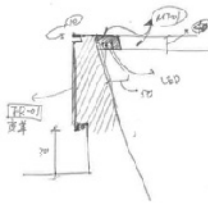
SECTIONAL VIEW A A'



3D



The usual plan is to use a flat square, but this time using circle for planar planning, 40 types of circles in different sizes are applied to form the overall interior space layout. The sand table in the center of the building is the biggest circle in the whole building. Starting from the center circle, there scatters out circles in different sizes to complement the whole interior space, while forming a complete and dimensional space with other function area such as VIP meeting area.







Transparent wired glass is used in the interior cone of steel structure. This shows a visual effect which has certain space boundary but very transparent.





The Waterfall of Light



A main light is set in the big circle in the center of the building. It pours down like a waterfall of light and becomes the visual center and luminous point of the whole building.







