



THE PARK

CONCEPT



IN SHANGHAI



THE PARK

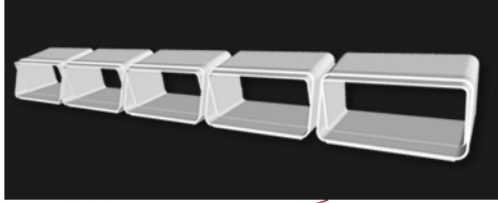


SHANGHAI

The park locates in the triangle area formed by the three active zones the Bund, Lujiazui and the North Bund and enjoys the prospects of development in the area. Adjacent to North Sichuan Road Park and Hailun Park the designer draws the inspiration of the landmark parks with history of decades and implants the concept of oriental garden into the design. This implies a natural and quality living environment under hundreds of years of humanity.

THE PARK

A. Pavilion



B. Lotus Leaf



C. Screen



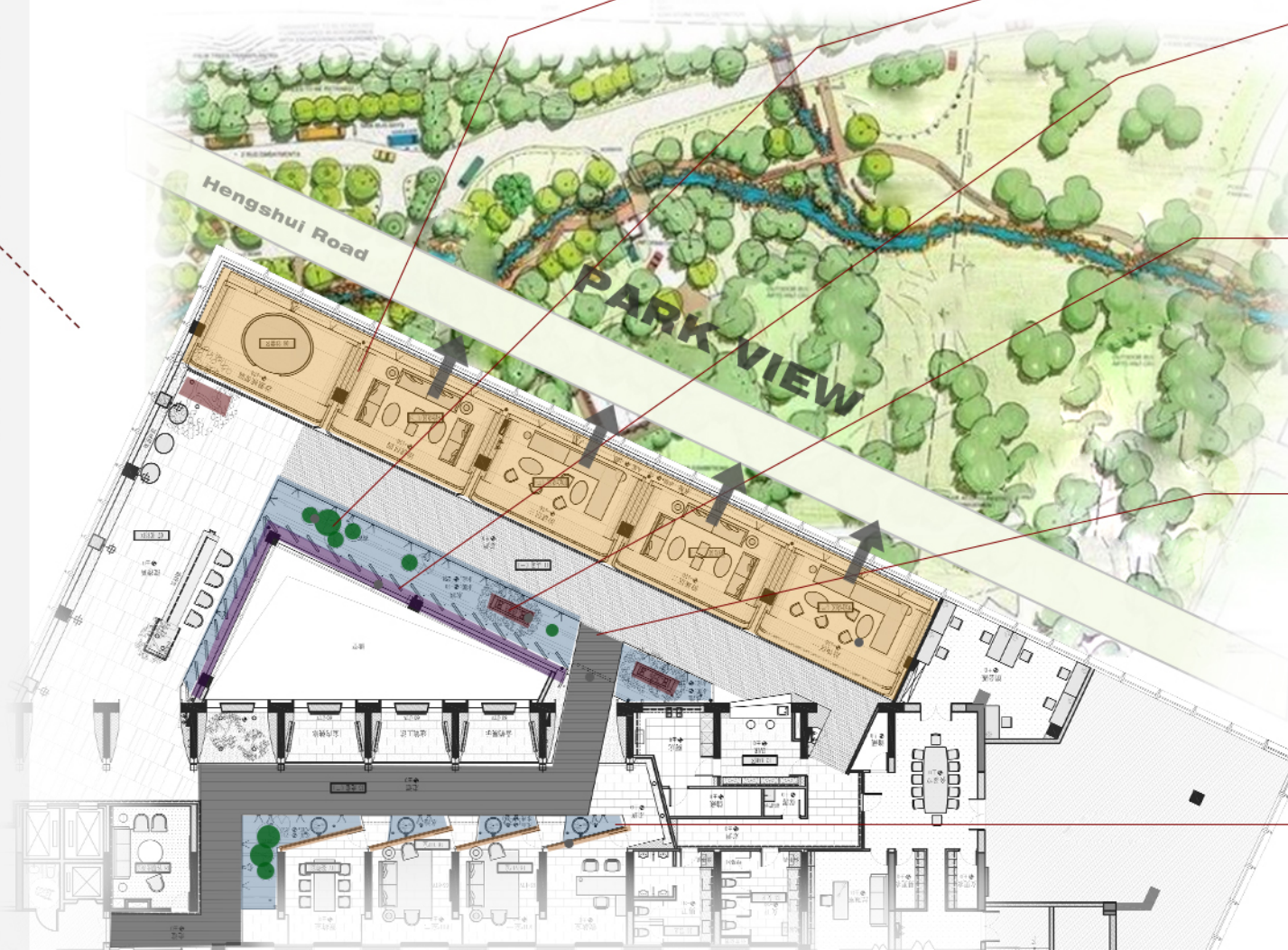
D. Peach Tree



E. Bridge




F. Metal Gold



Movement of Steps Shift of Scenes



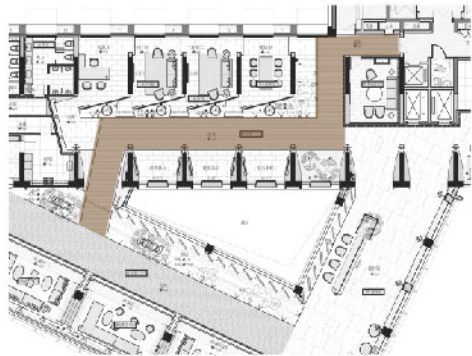
In China, the highest image of the park is the oriental garden. The oriental garden is the legacy of the Chinese aristocracy. It has the implicit personality of the Chinese and the looming oriental garden spirit.



The bridge and flowing water, fashion elements, together with the light and shadow as well as other elements, the scene shifted with movement of steps stressed by the oriental culture is realized in the interior space.



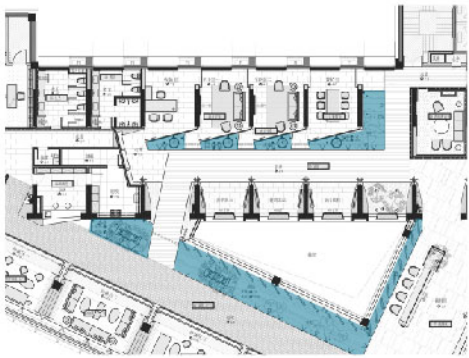
Bridge



Separated by waterscape and the corridor to establish privacy, the interior bridge built with marble becomes the sole connection of VIP room and corridor. It improves the oriental beauty in the interior space and shows the fun and ingenuity of the design.



Flowing Water

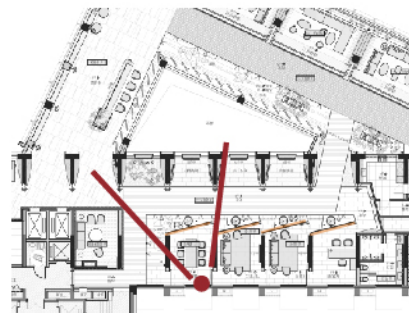


As the proverb goes, beautiful water attracts people to come and beautiful waterfront attracts people to enter. The designer moves the waterscape from exterior to the interior and express the wish to the harmony between human and the nature by application of lotus pond in many areas. The artistic metal lotus leaf runs through the oriental charm of modern humanity and brings special fashion of metal. The two cultures communicate and collide with each other within the space and form special charm of oriental garden.

Metal Gold



Metal frame grid is applied to separate the VIP room. The elegant geometry metal grid not only ensures the privacy of VIP room, but also makes the overall space transparent. In the daytime when the sunshine enters, the light and shadow make the space more bright and alive.

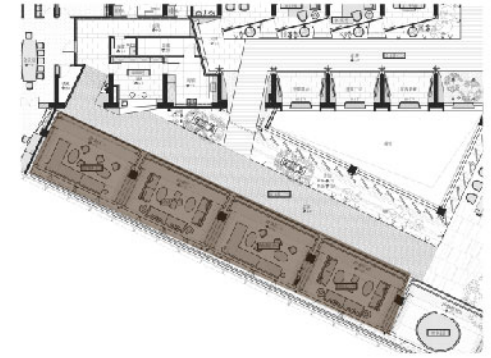








pavilion



Despite of retaining traditional humanity and oriental culture, the designer also wants to show the fashion style by combining some elements of modern science and technology into Chinese style. Light strips on the floor of negotiation area and the profile at the entrance offer the space a sense of future, the metal artwork frame on the wall echoes this sense of future and forms a sense of future with special fashion. The designer combines the two different styles with colors and finish, furniture and equipment and forms a modern new oriental design style. No matter the furniture and finish or the material of finishing, the overall space gives out a charming modern oriental beauty and wish for happy life.











Screen

The profile walls orderly stand on the floor behind the peach tree like ancient Chinese style screen. Simple metal lines and elegant color match make the space peace and pleasant while bringing into space the wishes for happy life of oriental people.



