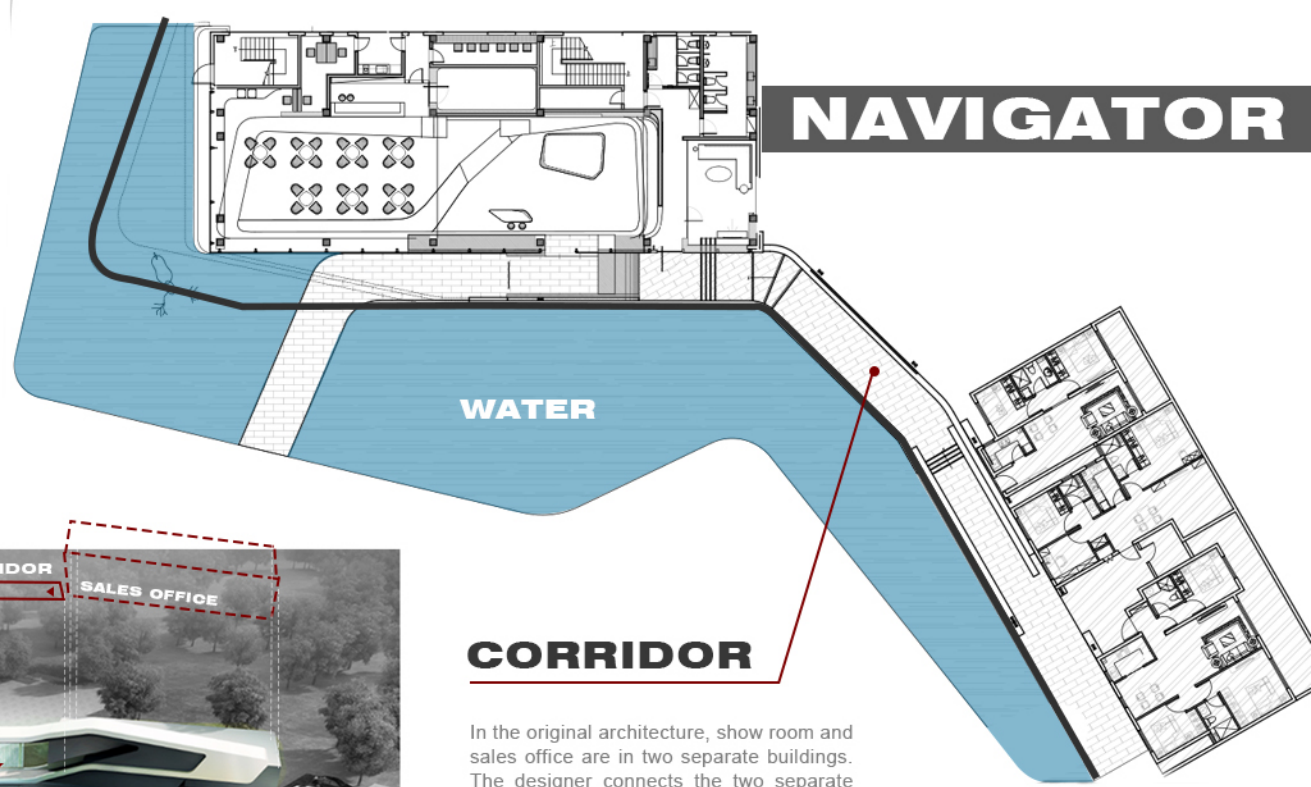
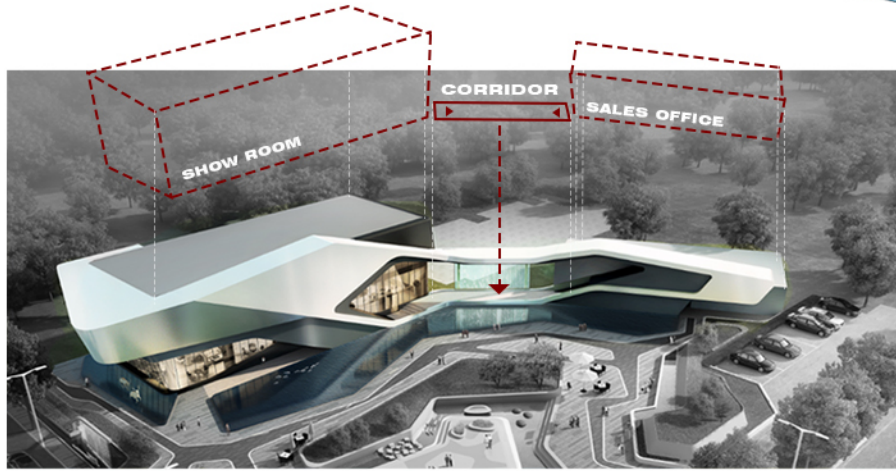




NAVIGATOR

Historical Significance

The original building is Tianjin Shipyard with history of one hundred years. It is the milestone in Chinese shipbuilding history and made great contribution to the navigation industry as industry leader of that time. For deep memory of history and respects to the original shipyard, we consider designing this project with the concept of navigator which means a large ship is sailing on the sea.



NAVIGATOR

CORRIDOR

In the original architecture, show room and sales office are in two separate buildings. The designer connects the two separate buildings together through a corridor and make them a complete one. We outline the profile of the ship with flow lines and attach the LED light strip based on the profile to present a large ship of modern times with future sense of science and technology.

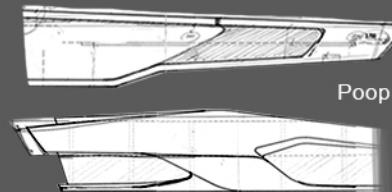
CONCEPT



Large ship

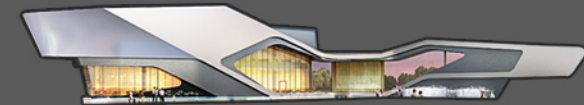


Curve



Prow

Poop



Connection



The project is located in Tianjin, the building was originally the Tianjin shipyard, now use style approach, combined with the shipyard shape, making it a modern style of the sales offices.

ARCHITURE

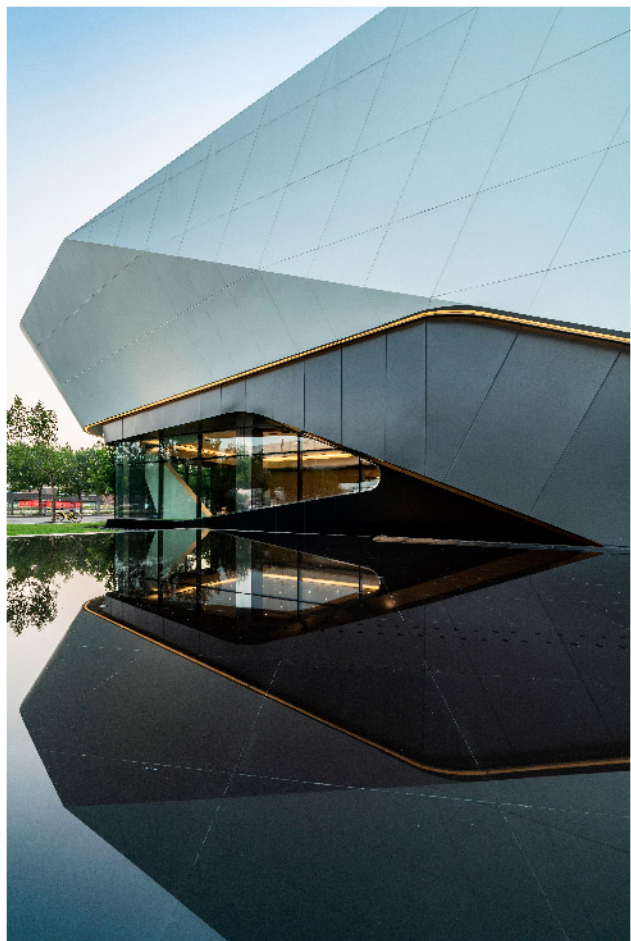


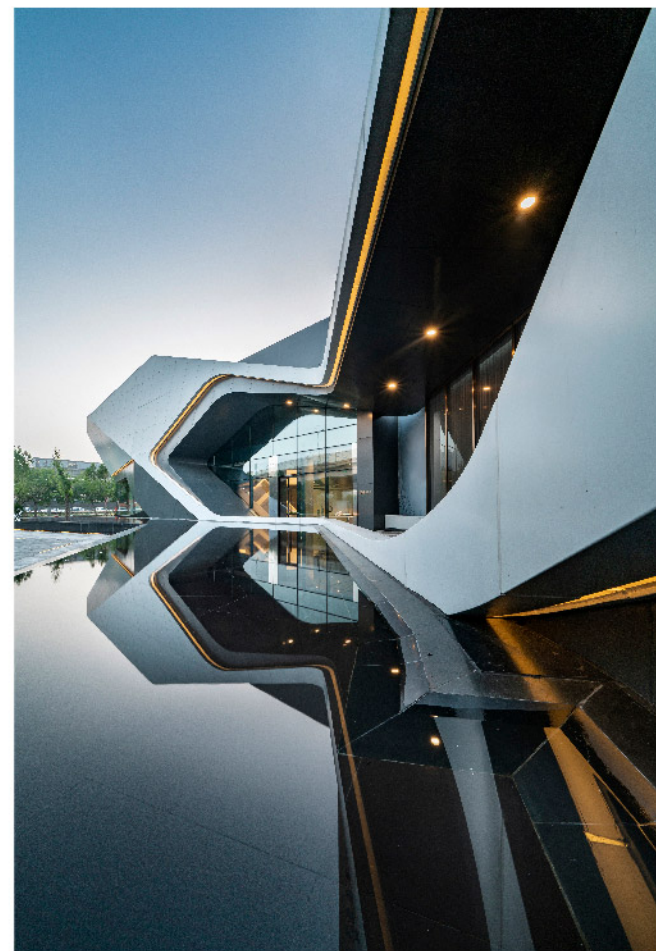
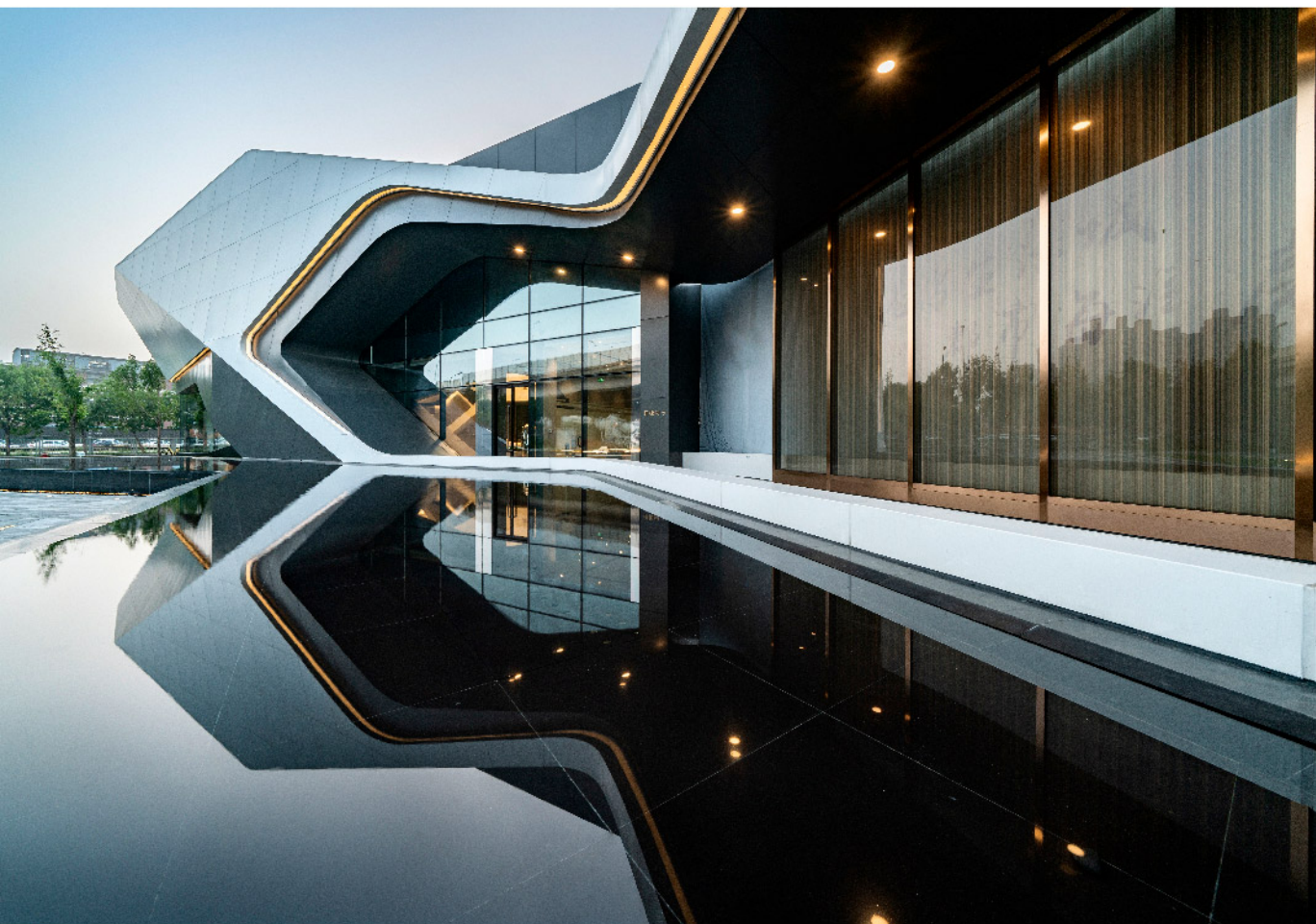








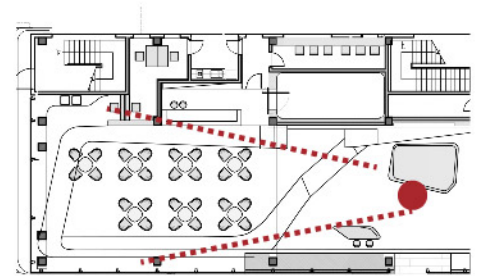






INTERIOR

The interior design, with black, white and grey as its main tone, conveys the layout features of a strong cabin machinery and industrial style







The main lamp of the indoor ceiling part adopts the shape of clouds, combined with the design of lines, to convey to people a huge ship sailing in the ocean under the clear sky for thousands of miles. In order to echo the theme of the whole design, it brings a visual impact and surprise

