



華人之創獎

TAIWAN GOOD DESIGN AWARD

日之森

HINOMORI

作品資訊

Work information

項目地點：台灣北部

項目類型：住宅公寓類

項目規模：148平方米

空間格局：3房2廳

主要建材：實木、噴漆、超耐磨地板、清水模、風琴簾

Site location: north Taiwan

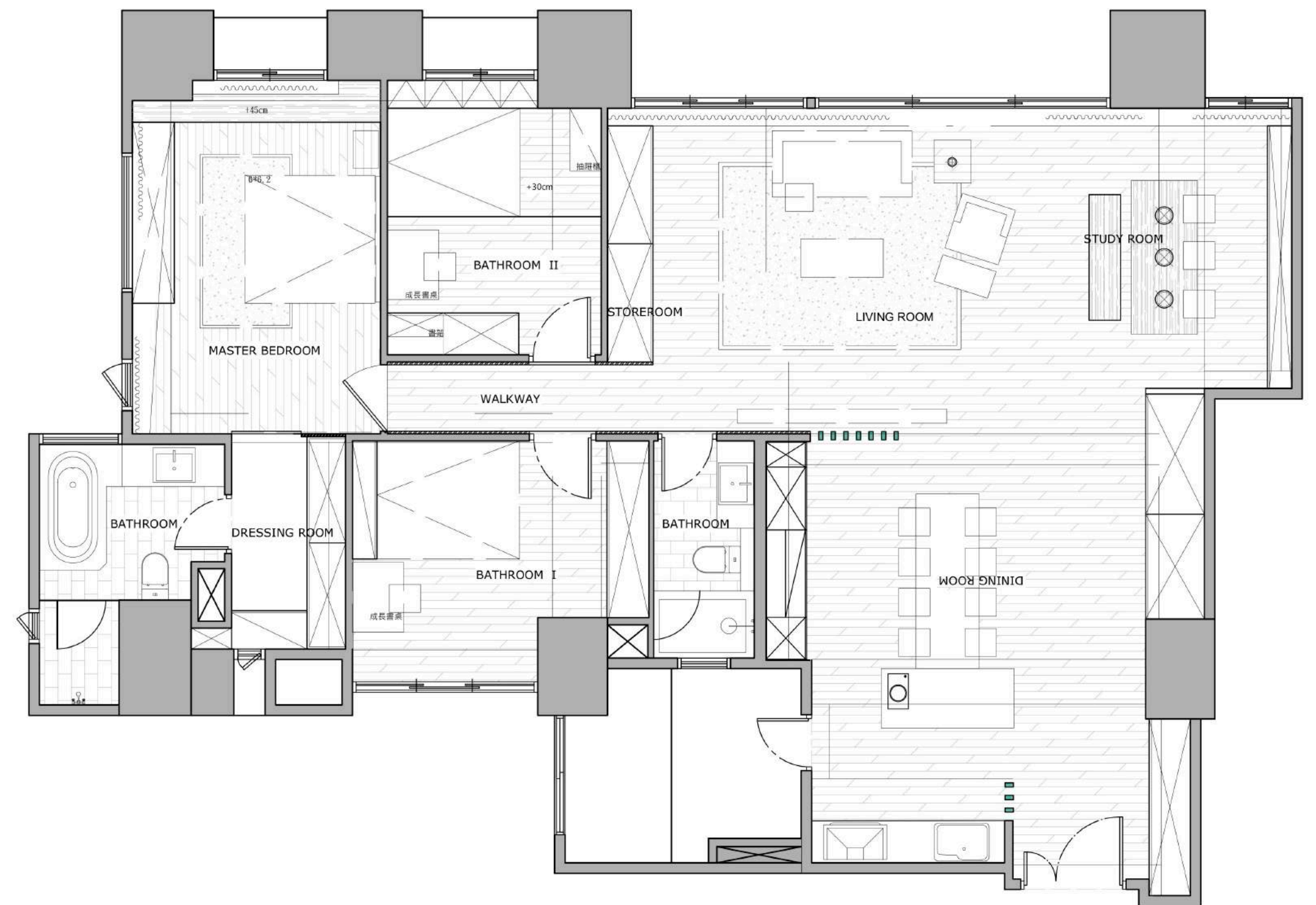
Type of construction: Residential apartment

Construction of size: 148 square meters

Spatial pattern: three bedrooms and two living rooms

Main building materials: Solid wood, Spray paint,

Laminate Flooring, Exposed Concrete, Hunter Douglas





項目定位

Design Proposition

本案為45坪的四口之家，屋主希望打造明亮舒適的開放式氛圍，並讓客廳得到最大限度的利用；因此我們去除場域隔間，僅透過天頂線條擘劃空間性質，創造空間中的彈性使用度，使各區域間得以串連互動。

This is a 148.5 square meters residence with a family of four. The owner expects to create a bright and comfortable open mind atmosphere and make the best usage of the living room. Therefore, we remove the compartments, with ceiling lines to delineate the space, bring out the flexibility of space usage, so that the various areas can interact in series.



風格情境

Creativity & Aesthetics

屋主喜愛簡單日式又帶變化的空間情境，因此我們採以純白基底，搭佐溫潤木質及灰階水泥色，圍塑清新自然的質樸韻致。家飾選配上則置入現代語彙，以簡約圓潤的造型燈件作為點綴，幾幅意象掛畫、綠意植栽，緩緩流露自然寫意，一幢人文舒壓宅「日之森」應運而生。

The house owner loves both guileless Japanese-style and changeable spatial context, so we adopt base on pure white, with cozy wood and gray cement color, to found a breezy and natural atmosphere. Furniture decoration adorned with simple and spherical modeling lights as modern symbols. Several image paintings and green plants reveal the natural scene. A humanistic conciliate house "HINOMORI" emerges at moment.



空間配置

Space planning

為達到屋主企求的通透視感及流暢動線，並同時保有休憩區的敞朗舒適，我們捨棄一般住宅的規劃方式，將玄關進門處規劃為餐廚場域，客廳及書房則靠向臨窗區，盡享大片自然採光。撤除區域間的樑柱隔閡，僅以橢圓形原木柱體作為格柵，除了弱化分界之外亦能享有日光照拂。

In order to achieve the vision of transparency and smooth circulation required by the owner and keep the capacious and comfortable recreational area, we abandon the general residential planning method. Behind the foyer is the kitchen and dining area. The living room and the study are with large windows to enjoy the natural daylight illumination. Remove beams and barriers; use the elliptical log as the grille. Besides weakening the boundary, can also enjoy the sunshine.



選材效用

Materials & Cost
Effectiveness

本案的設計困難點在於鑲嵌魚缸進櫃體，考量牆面櫃體潮濕發霉的狀況，我們使用防潮發泡板避免黴菌孳生，並透過排風扇達到散熱效果。而在書房的牆櫃上，採以厚度4cm的木皮層板，加上方管鐵加強結構性，即便擺滿書籍也不會有變形的疑慮產生。

The difficulty of the design is that how to inlaid the fish tank into the cabinet body? Considering the damp and mildewed condition of the wall cabinet, so that we use the moisture proof foam board to avoid mildew breeding and achieve heat dissipation through the exhaust fan. Use 4 cm thickness wood cortex laminate board to erect bookshelves on the study wall, and the iron square pipes are used to strengthen the structure. Even if put plenty of books on won't be deformed.

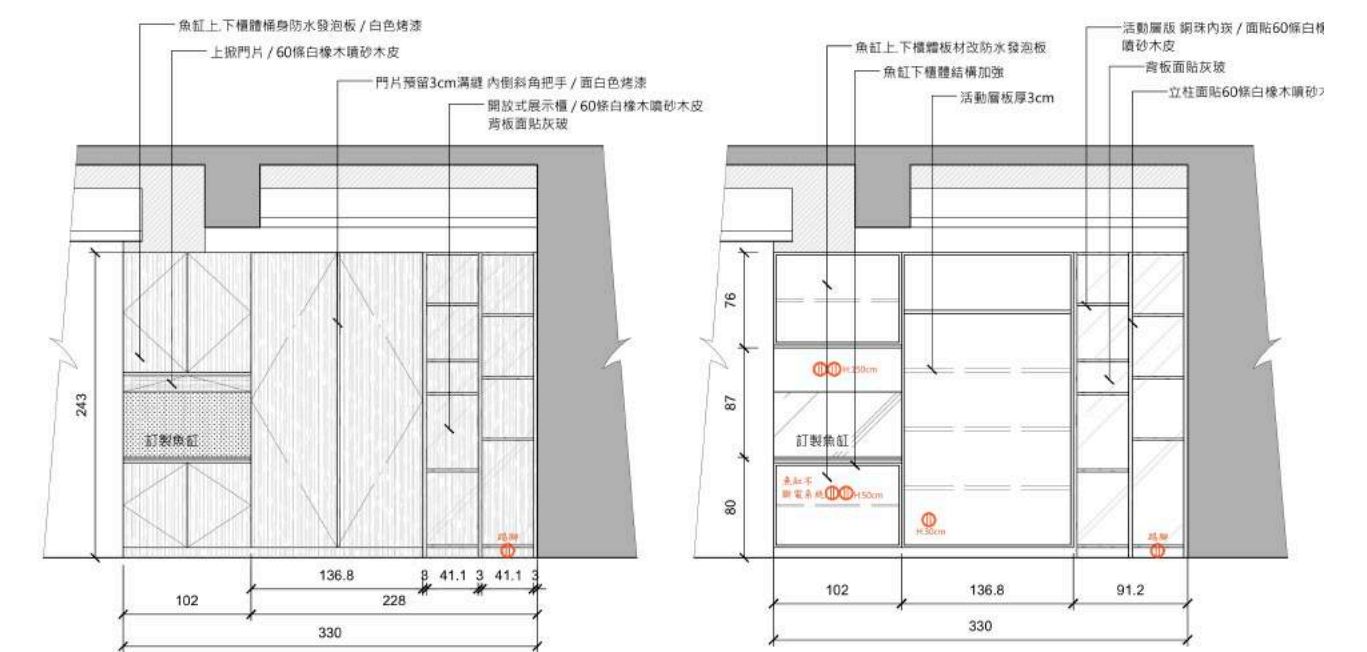
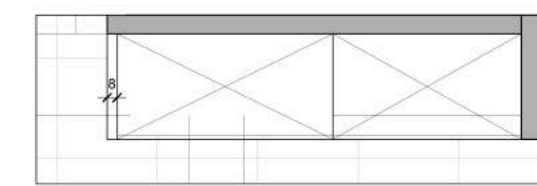
玄關及餐區

Porch, Kitchen & Dining area



有別於一般入門的印象，我們在進門處便設置了餐廚場域，讓歸家或來訪的人能感受到家的溫暖自適，也讓餐時間的歡聲笑語得已流動、感染每一個人。並將原先「一」字型並列的中島及餐桌改為「T」字型擺放，跳脫餐廚場域制式的排列方式，也讓兩相性質在互動同時有了些微劃分。因應屋主期望的開放式設計，我們將客廳的隔間拆除，採以橢圓形原木柱體建構格柵，在弱化分界同時亦能享有通透的視覺感受。

Different from the general impression of entry, set up a kitchen and dining area at the entrance. For that the family members or visitors would feel the warmth and comfort of home, also let the laughter of the mealtime has been flowing and infected everyone. Break the standard arrangement of the kitchen and dining field, the original "horizontal" shape island and dining table was supplanted by the "T" font display. With micro partitioning, the two areas still can interact with each other. In response to the open style expected by the house owner, dismantled the compartments between the living room and dining room. Use the elliptical logs to construct grills to weaken the boundary but also can enjoy the penetrable vision.



走道收納櫃設計立面圖 S:1/30 cm

走道收納櫃設計立面圖 S:1/30 cm

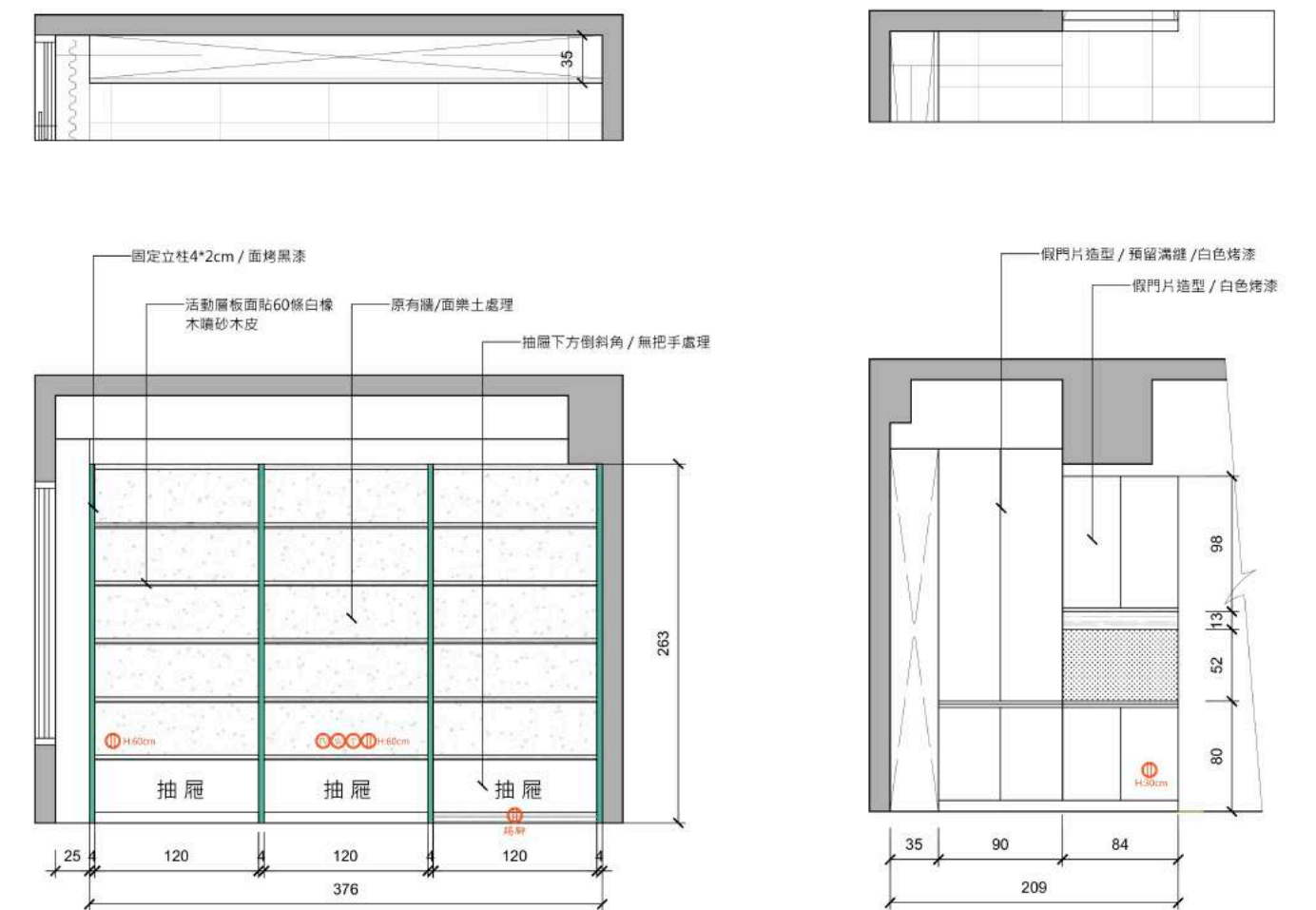


「魚缸」的設計為本案中的一大重點，為讓有養魚嗜好的屋主能隨時觀賞玩味，以及為居家情境置入綠意，我們特別在玄關步入公領域的轉角處，以嵌入櫃體的方式為其量身訂製。

另外考量牆面櫃體潮濕發霉的問題，我們採用防潮發泡板避免黴菌孳生，並透過排風扇達到散熱效果。摒棄常見的櫃體設計，我們將書櫃結合牆面，達到收納及展示之效，構築家的日常端景。水泥粉光背牆及水泥材質燈飾，亦為空間鋪陳日式靜謐氛圍。

The major point of the design is the “aquaria”. In order to let the house owner who has the hobby of fish breeding can enjoy it at any time, and make a new interpretation of home greenness, especially at the corner of the entrance customized an “aquaria” in an embedded way.

Also considering the damp and mildew condition of the wall cabinet, adopt the moisture proof foam board to avoid mildew breeding and achieve heat dissipation through the exhaust fan. Abandon the common cabinet design affix the bookshelves on the wall to achieve the effect of stowing and displaying. The cement premier layer back wall and the lamps of cement material shape the tranquil Japanese-style home atmosphere.



書櫃設計立面圖 S:1/30 cm

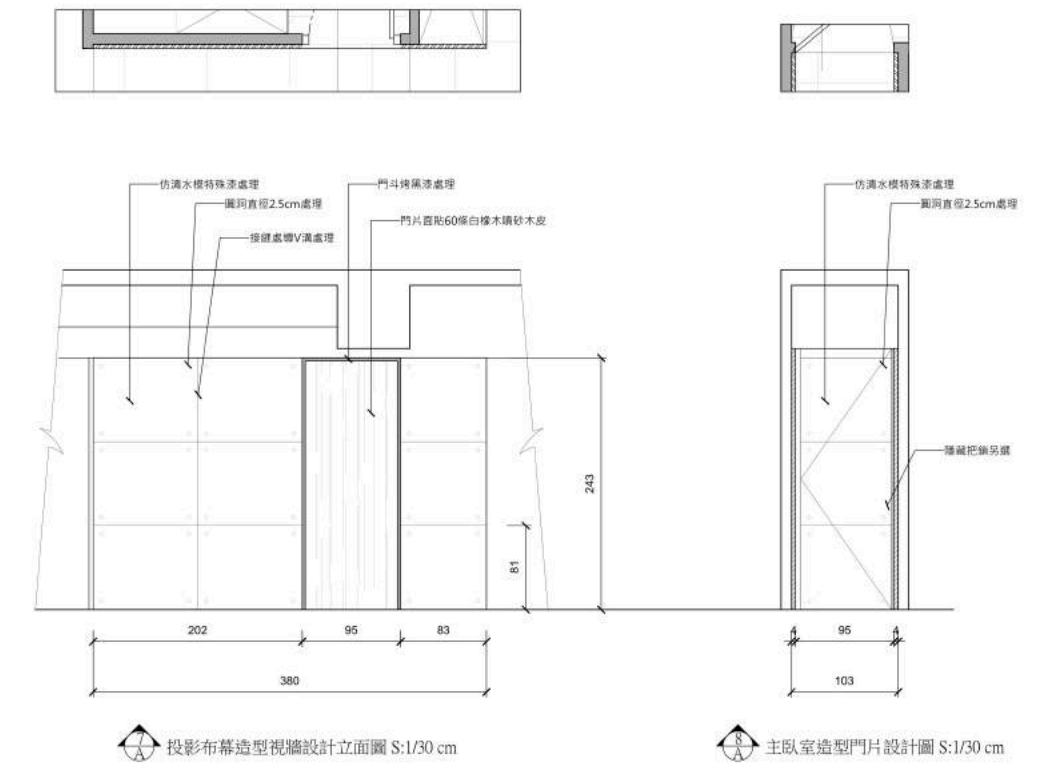
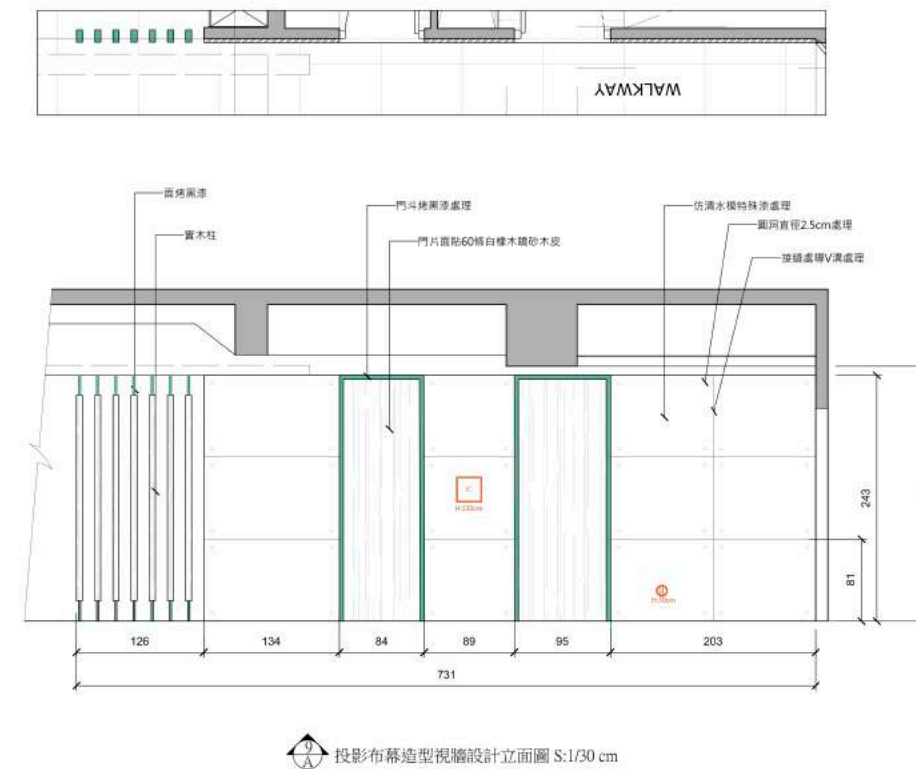
收納櫃造型視牆設計立面圖 S:1/30 cm

客廳 The Living Room



為因應業主不放置電視，而改以安裝投影機及布幕的需求，我們在客廳的樑上做了縝密規劃，將投影機及布幕採升樑式處理，讓線路及燈光皆收束整齊，達到簡潔俐落的清爽視感。因先天的地利優勢，屋內享有充沛的日光照射，因此燈源配置上，我們僅利用層板燈創造間接照明效果。其中考量客廳上方的壓樑問題，我們則採斜面設計，減緩視覺上的壓迫，亦讓場域間更添變化及趣味性。

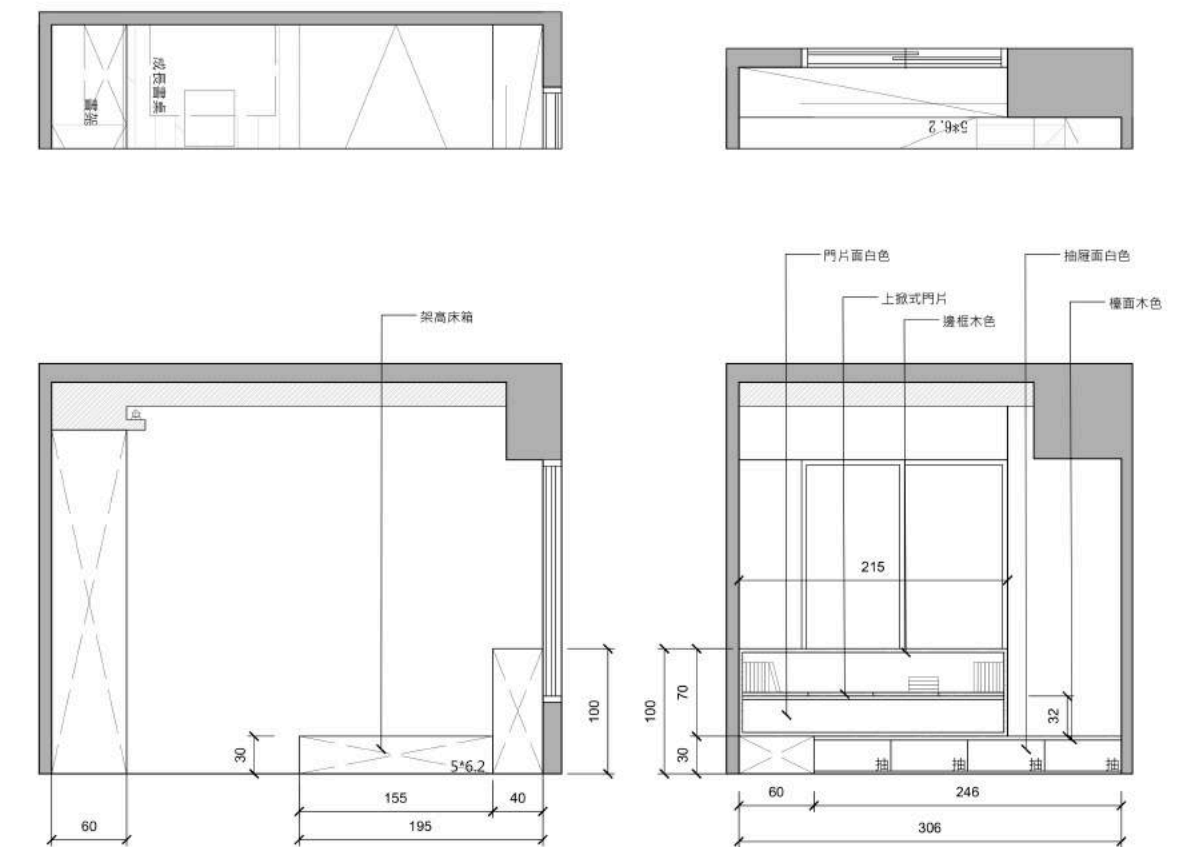
In response to the owner prefers projector and screen instead of TV sets, we made a attentively plan in the living room beam. The screen and the projector are lift up to the ceiling beam, put the circuits and lights in order to achieve a neat and well-executed visual effect. Because of its natural advantages, the interior space enjoys abundant sunlight. Therefore, in terms of lighting configuration, only use laminated lamps to create indirect lighting effect. Considering the doubts of pressure beams above the living room, adopt inclined plane design to alleviate the pressure of vision and make the field more diverse.





臥室的本質便是休眠、放鬆，
我們在小孩房的設計上，
注重空間收納的利用，
及色調氛圍的鋪陳。
木質的溫潤，極簡的刻畫，
純淨的色調，日式無印氛圍油然而生，
靜謐且無壓，陪伴休憩、成長的漫漫時光。

The essential aspect of the bedroom is dormancy and relaxation.
In the design of the children's room,
focus on the utilization of space storage
and the tone atmosphere layout. Warm wood,
simple and pure color tone, the Japanese style
impression arises spontaneously.
Serene and pressure-free atmosphere
accompany the kid's growth times.



臥室二床頭書桌設計立面圖 S:1/30 cm

臥室二展示櫃設計立面圖 S:1/30 cm



華人之創獎

TAIWAN GOOD DESIGN AWARD

Thank You