



華人之創獎

TAIWAN GOOD DESIGN AWARD

幽岸岩光

Tranquil Petrosal Majesty

作品資訊

Work information

項目地點：台灣北部

項目類型：住宅公寓類

項目規模：330平方米

空間格局：3房2廳

主要建材：木皮、石皮、鐵件、噴漆、
薄石板、薄板磁磚、手刮木地板

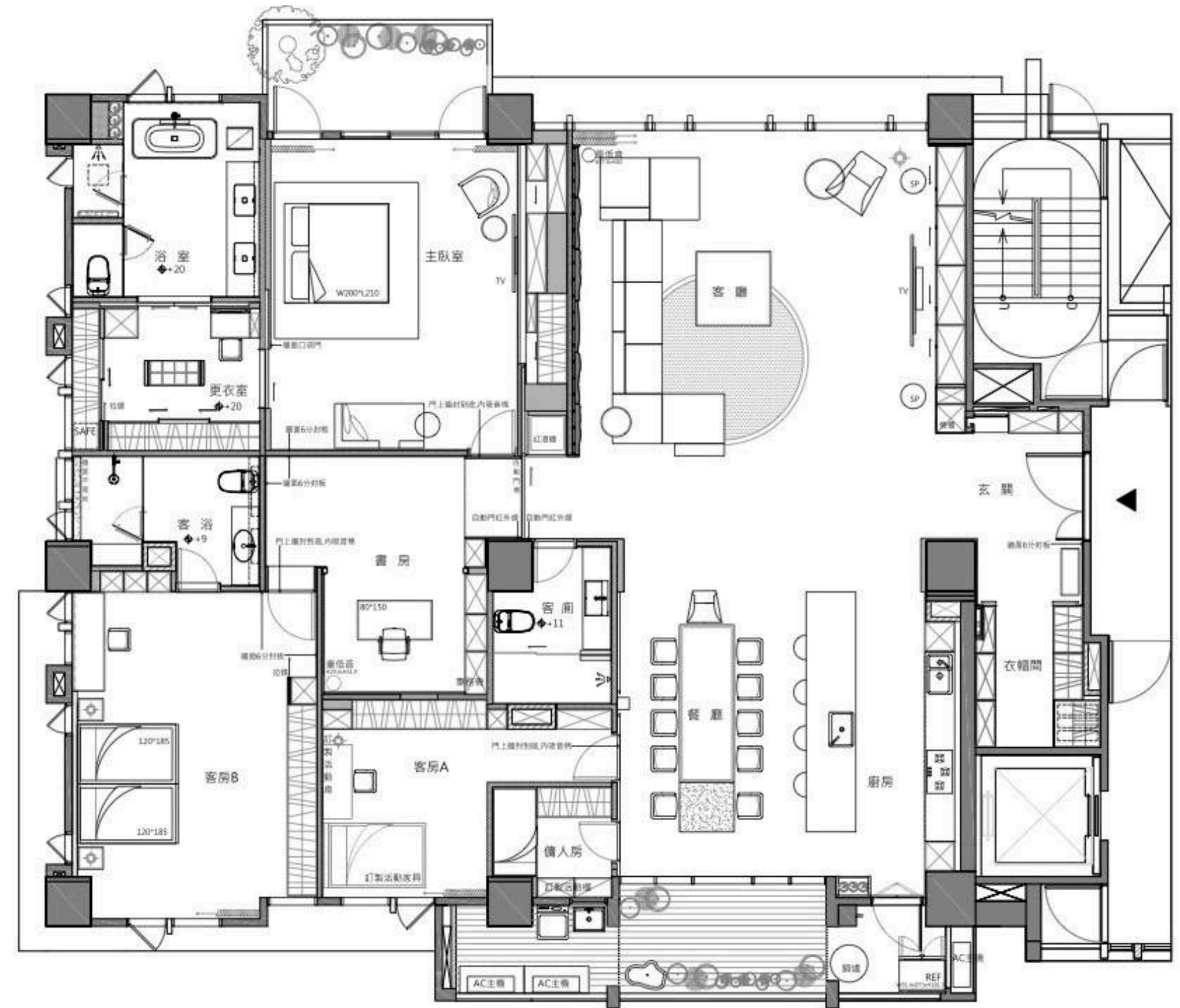
Site location: North Taiwan

Type of construction: Residential apartment

Construction of size: 330 square meters

Spatial pattern: three bedrooms and two living rooms

Main building materials: Veneer, Stone, Iron piece,
Spray paint, bastard ashlar, Thin ceramic tile,
handmade timber floor





項目定位

Design Proposition



本案作為新婚房使用，業主希望空間中盡量開放，讓客廳餐廳區域達到連結，主要的活動場域留給公領域。因喜歡簡單純粹，故在色調選擇上，我們以冷色調性為主，利用黑、白、灰作為基底，鋪墊出沈穩大氣氛圍。

This is a house for new marriage couples. As they wish the space to be as open as possible, in addition the dining room and living room can be connected to each other, reserved public space for the main daily activities. For fond of simplicity and clarity tones, therefore choose cold colors as the main tone. Black, white and grey are used to scatter a profound, distinguished atmosphere.



設計困難點1

Design Difficulties 1



業主捨棄傳統的電視牆，希望以落地式電視音響為設計出發點，但這就必須考量線路問題，在施工上也有一定的困難度。我們特別設計了線槽，將所有線槽都連接至主機端，讓線路間能夠互通有無，視覺上看起來卻乾淨清爽，達到兼具實用與美觀的體驗感受。

The owner abandoned the traditional TV wall, replaced with the Floor-standing TV stereo design scheme. Considered about the circuit problem, also there are certain difficulties in construct process, thus, we especially designed the wire way and connect them to the host, so that the circuits can communicate with each other. Not only has neat and tidy vision, but also both practical and artistic.



設計困難點2

Design Difficulties 2



為了減緩空間中深沈的視覺感受，我們在中島吧台區一改以往的大理石材，改以1米x3米的磁磚，呈現透亮高雅質感。一般大理石材是利用45度切腳，而磁磚質地則因較薄，所以我們利用水切技術，讓接縫間更顯精緻俐落。

In order to alleviate the heavy visual feeling in the space, the island bar area toss away the common marble material, replaced with 1 m x 3 m tiles, showing a bright and elegant texture. Normally, marble is made of 45-degree angle of cutting. For The reason that the texture of the tiles is thinner, therefore, water-cutting technique is used to make the seams more delicate.



風格情境

Creativity & Aesthetics



年輕的業主特別喜歡黑、白、灰色調與簡練線條，因此我們在深色主調上飾以溫潤木紋及純白櫃體、家具，平衡居家溫度及視覺感受。客廳主牆採以大面石材塊體，形塑大氣磅礴之感；有別一般的黑色岩塊，我們建議業主改以米色系觀音石鑲嵌暖黃燈源，讓整體視感不會過於冰冷，並透過分割錯置手法增添場域趣味。

Young owners are particularly fond of black, white and grey tones and concise lines. Therefore we ornament the deep dark tone with warm wood grain and pure white cabinet and furniture to balance the temperature and visual sensation. The main wall of the living room is made of large stone blocks, which shapes the feeling of magnificence. Not using the ordinary black rocks, we suggest the owner to utilize beige andesite stone inlay with warm yellow light. Via the staggered techniques to delight the space and make the whole visual sensation won't be too icy.



空間配置

Space planning



因應屋主希望盡可能保有公領域的通透性，我們在公私領域的過度區——書房中，採開放式設計，以此串連小孩房與主臥室，並運用大量鮮明線條，展現屋主個性和喜好。

In response to the desire of homeowners to maintain as much openness as possible in the public domain, The study as the transitional area of the public and private spheres ----- adopted the open design style to adhere the kid's room with the master bedroom. Utilize a large number of apparent lines to reveal the owner's personality and preferences.



選材效用

Materials & Cost
Effectiveness



為平衡黑、白、灰色調為主的場域氛圍，我們利用自然質材及燈光配置增添家的溫暖意蘊，以木質及石材的明暗對比，醞生空間中的對話；並飾以鐵件收邊，讓整體看來顯得簡練而精緻，尤在細節處運用許多線條，呼應主人的性格與喜好。

In order to balance the space atmosphere of the black, white and grey tones, employ natural material and lighting configuration to expand the warmth and coziness of the house. With wood and stone of the chiaroscuro; and the edge is decorated with iron pieces, so that the overall looked concise and delicate. Especially in the details of the use of lines, echoes the master's character and fondness.

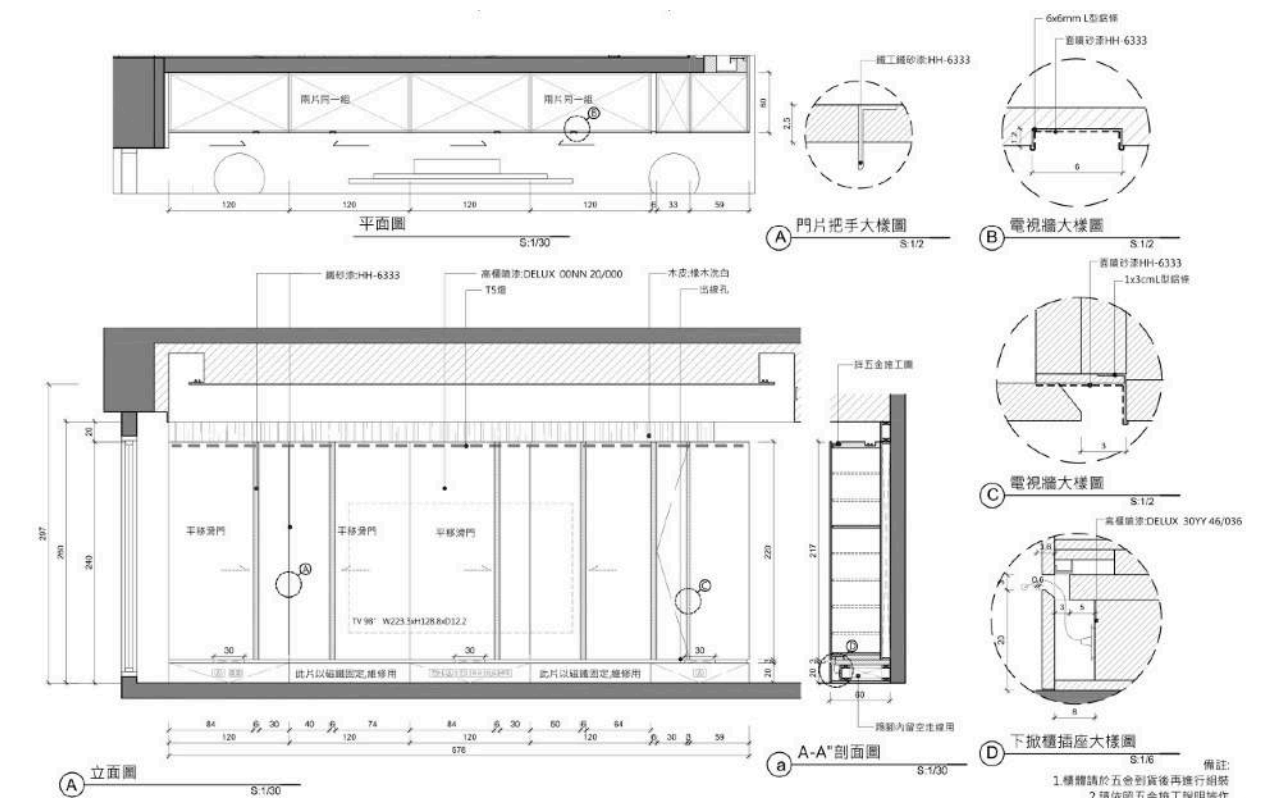


客廳 The Living Room



屋主希望空間中不要有太多造型裝飾，僅呈現簡明純淨的居家氛圍即可，因此我們也不做過多的雕飾與色彩變化，僅利用材質特點及線條點綴，展現沈穩內斂的空間性格，同時豐富空間中的變化性和趣味。20坪大的客廳，偌大的天花板顯得單調，我們索性呼應地板線條，以大面斜線條相映成趣。

In the dining area, set apart the area of ceiling and the wall via vaguely cutting lines. The dining table and the island also present a distinct and bouncing visual effects through the contrast of cold and warm of the tile and wood. In order to make the whole space look not too dim, while maintaining a low-profile temperament, use anti-indirect lighting, kneading out of the gentle and elegant charm.





餐廚

Kitchen and Dining room



餐區中我們隱約地以線條切割天花板與壁面，劃分區域性質。餐桌和中島亦透過木質與磁磚的冷暖對比，呈現鮮明而跳躍的視覺效果。為讓整體空間看來不要過於昏暗，卻又同時保有低調氣質，我們利用反間接照明燈，揉合出溫潤的靜雅韻致。

In the dining area, set apart the area of ceiling and the wall via vaguely cutting lines. The dining table and the island also present a distinct and bouncing visual effects through the contrast of cold and warm of the tile and wood. In order to make the whole space look not too dim, while maintaining a low-profile temperament, use anti-indirect lighting, kneading out of the gentle and elegant charm.

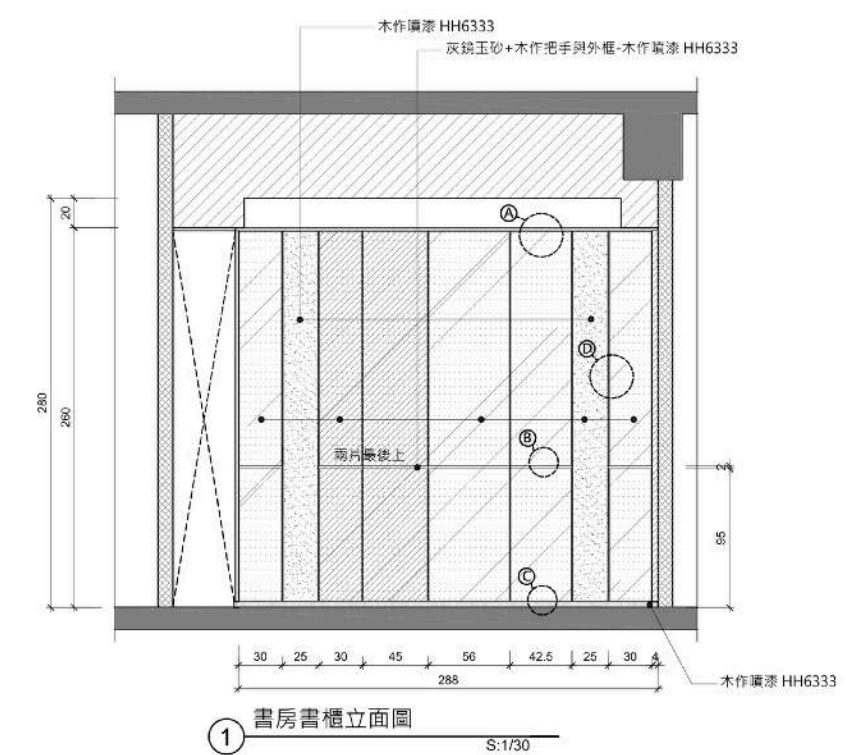


書房 The Study



書房作為公私領域的過度，且又是開放性空間，必然要彰顯其乾淨俐落。因此我們將牆面與書櫃規劃為一體，僅以色彩噴漆區隔性質，並鑲嵌黑色鐵件，收束整體視覺效果。

The study as an open transition space between public and private fields, must highlight its conciseness. Therefore, gear the bookshelves on the metope, partition with spray paint, and inlaid black iron pieces, to accomplish the overall visual effect. The metope design at the bottom of the corridor also has special ingenuity.



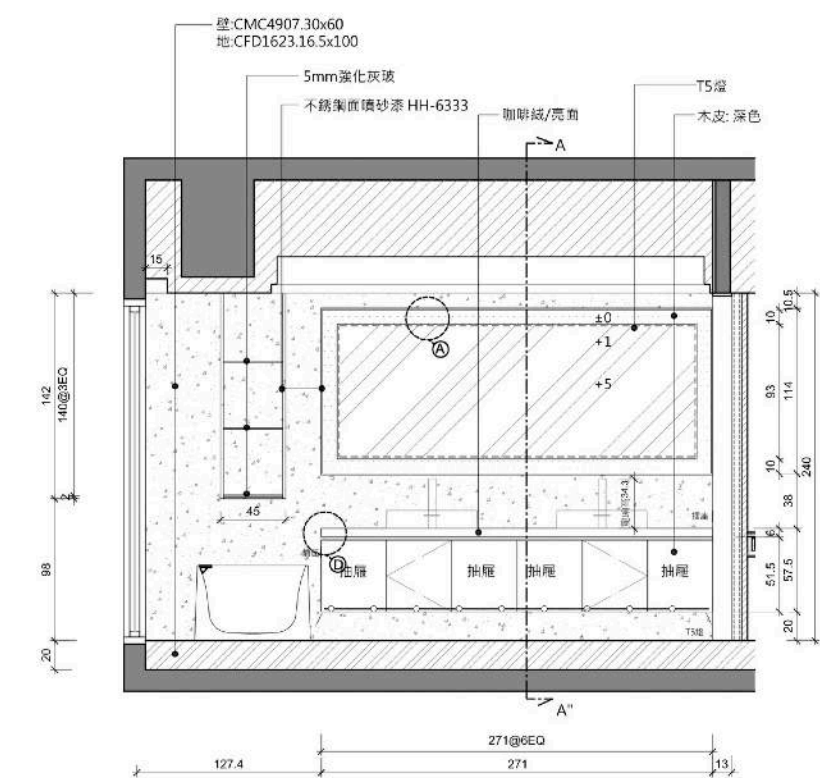


浴室 Bathroom



沐浴時分是一整天下來最令人放鬆的時刻，為讓屋主能見得窗外的風光景致，我們將空間重新劃設，並將浴缸範圍區分出來。其實背後還有一個原因，屋主希望營造日本溫泉飯店中，卵石鋪設地面的情境氛圍，但考量保養不易、易生青苔，因此我們採用檜木呈現日式意境，遇熱水時還會散發天然香氣，取意為境，靜靜倚躺其中，蔓生空間情韻。

Bathing time is the most relaxing time of a day. In order to view the window scenery, re-zoned the space, especially distinguish the bathtub area. The owner hopes to create an atmosphere of cobblestone paving ground, which the Japanese hot spring hotel frequently used. But consider the difficulty of maintenance and would grow moss easily, thus adopt Taiwan cypress to accord the Japanese artistic conception. When hot water flow through will emit natural aroma. Lying in it, immersed in the soothed feeling leisurely.



① 主浴櫃立面圖

S:1/30



華人之創獎

TAIWAN GOOD DESIGN AWARD

Thank You