

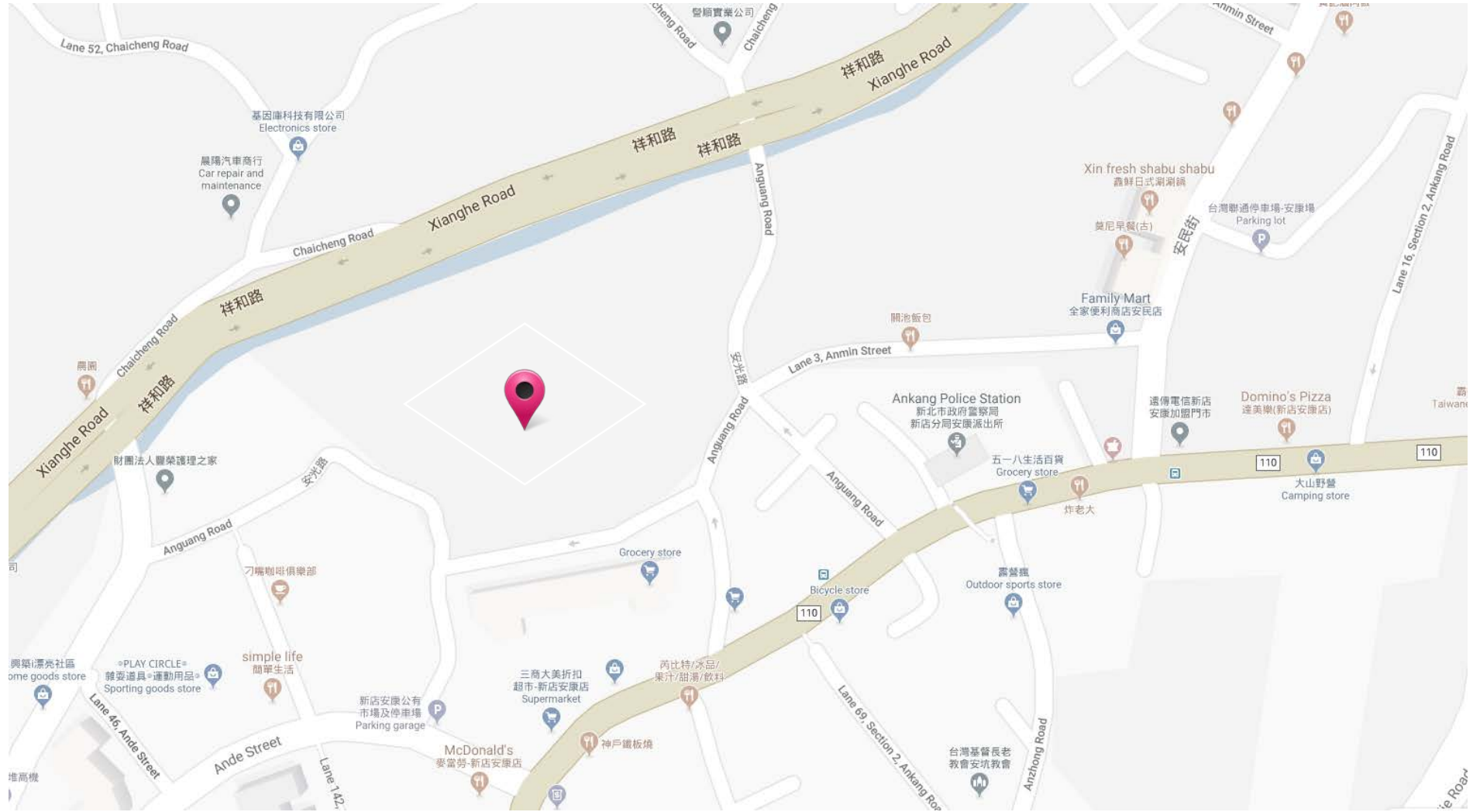
天擎之境，靜逸居所

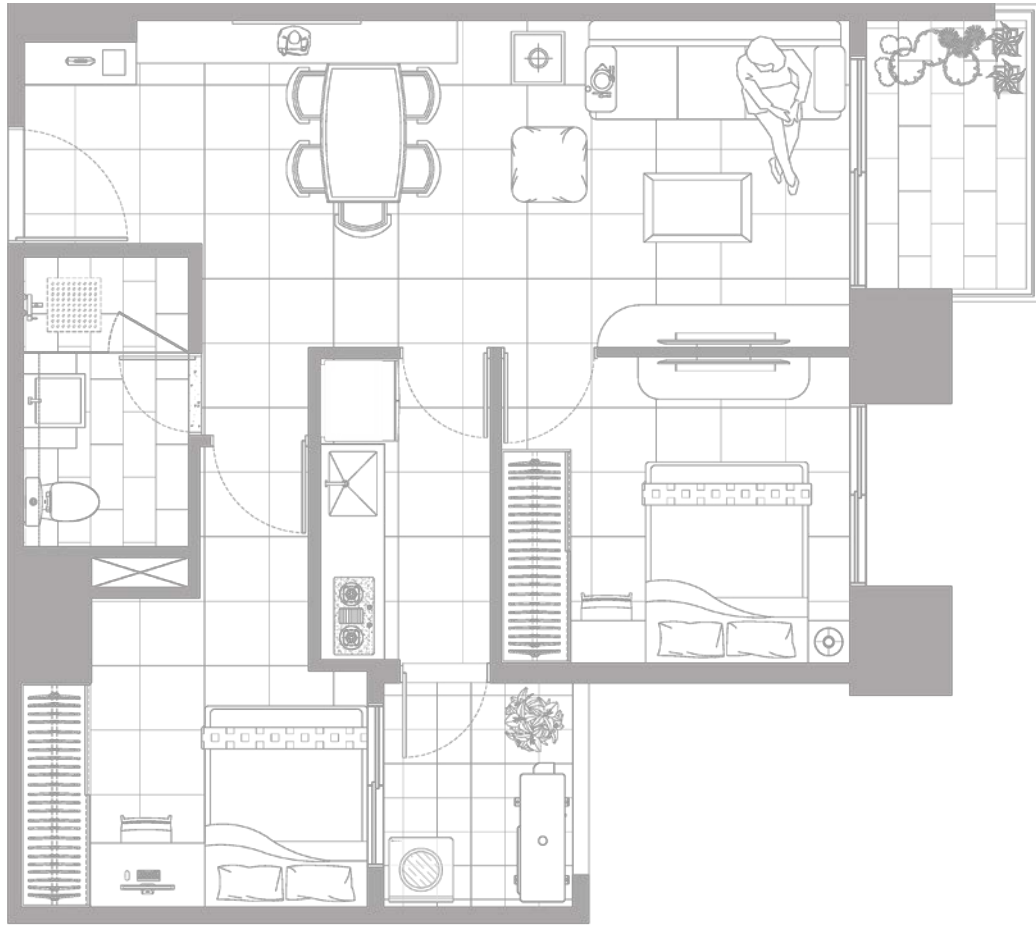
Tranquility

Location

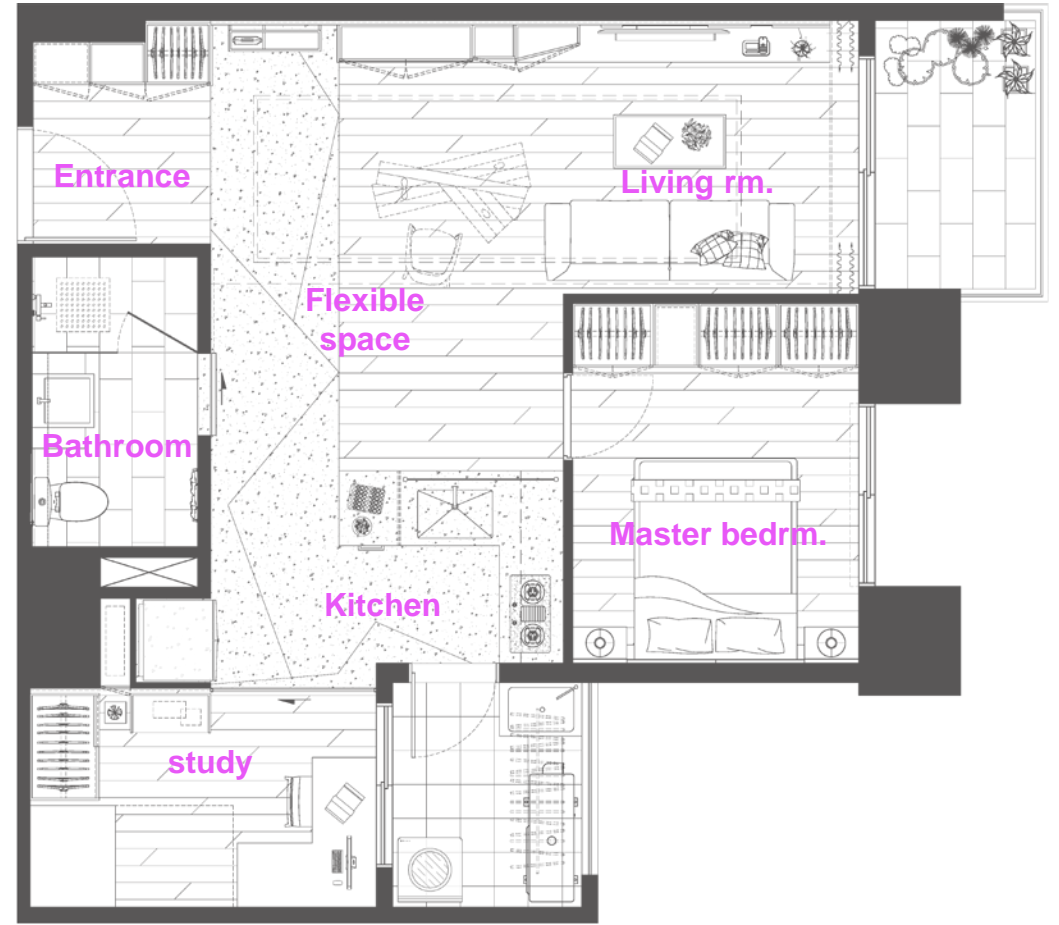
- 地點：新北市新店區
- 用途：住宅空間
- 面積：15坪
- 材料應用：清水模、大理石、木皮、超耐磨地板

- Location：Xindian District, New Taipei City
- Uses：Residential space
- Area：Area
- Material application：concrete, marble, veneer, metal, resistant floor





Before



After

CONDITION :

- bedrooms, living room, kitchen, bathroom , study
- Open kitchen
- Master bedroom closet
- Flexible space (work / party)
- study
- Architectural concrete

空間需求 :

- 兩房一廳一廚一衛
- 開放式廚房
- 主臥室需要衣櫃
- 彈性空間(工作/聚會)
- 一房為書房
- 搭配清水模材質

透過空間構成元素：天 / 地 / 壁 使其一二連結
讓空間產生連貫性，且清楚的劃分機能及起居空間。

Through the space to form elements:
ceiling / floor / wall to make one or two links,
Make the space coherent and clearly
divide the function and living space.



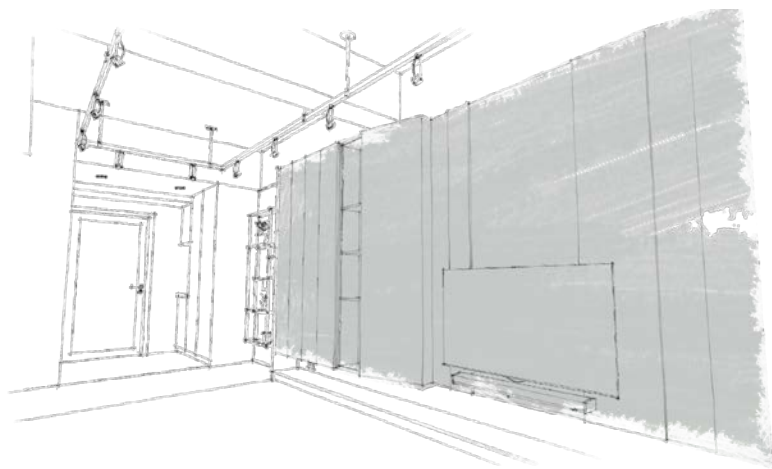


細節之處則展現了許多內化的材質轉換，
表現在天花板的層次、立面的延伸、靜謐的清水模與溫潤木質上，
細節層次的各區域則以不同的氛圍來呈現。

The details show a lot of internal material conversions.
Expressed in the level of the ceiling, the extension of the facade,
the quiet concrete and the warm wood,
Each area of the level of detail is presented in a different atmosphere.

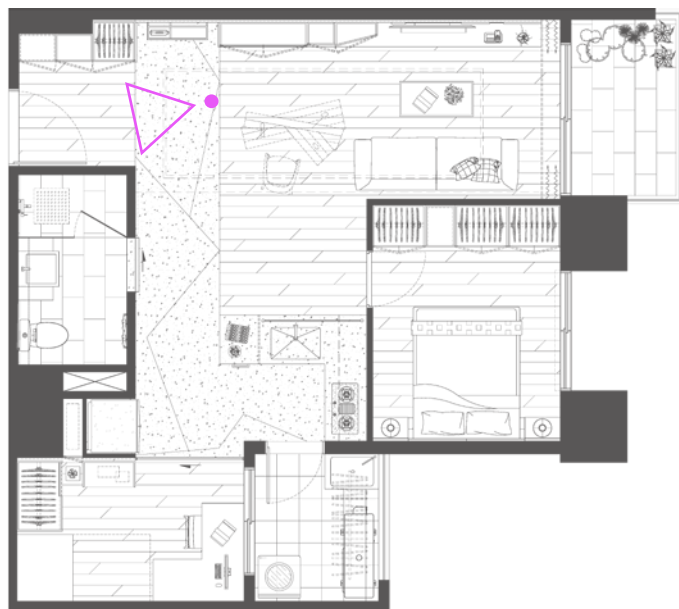




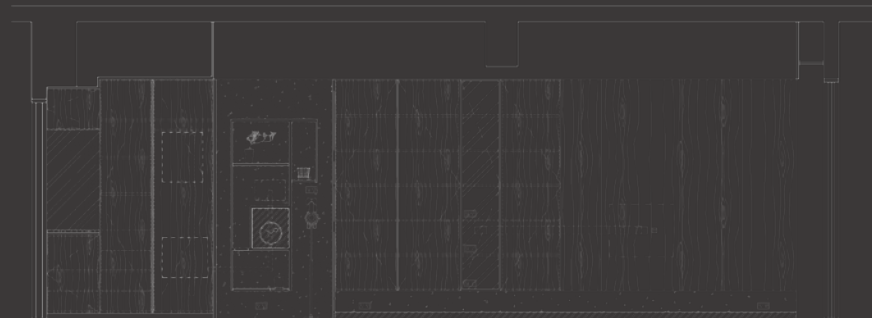


電視主牆以懸吊櫃的方式呈現，形成較輕盈的氛圍，襯托沙發背牆清水模的泰然自若。

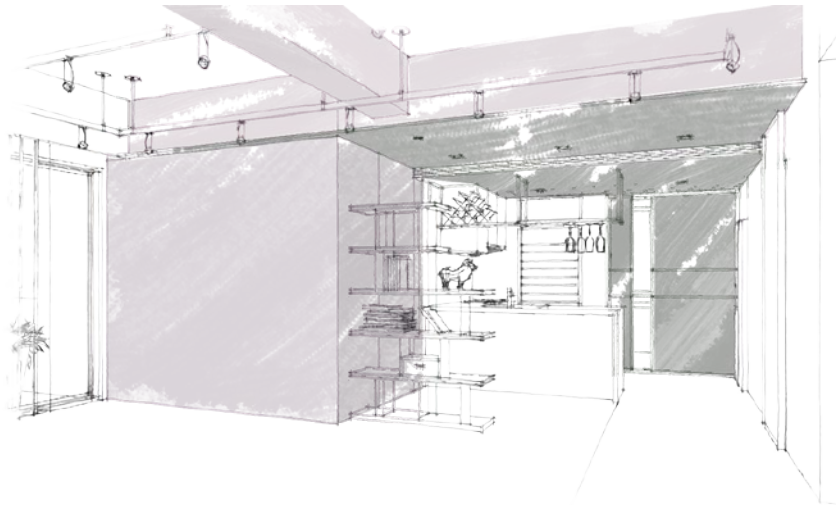
The main wall of the TV is presented in the form of a hanging cabinet, forming a lighter atmosphere, setting off the calmness of the sofa back wall.



PLAN

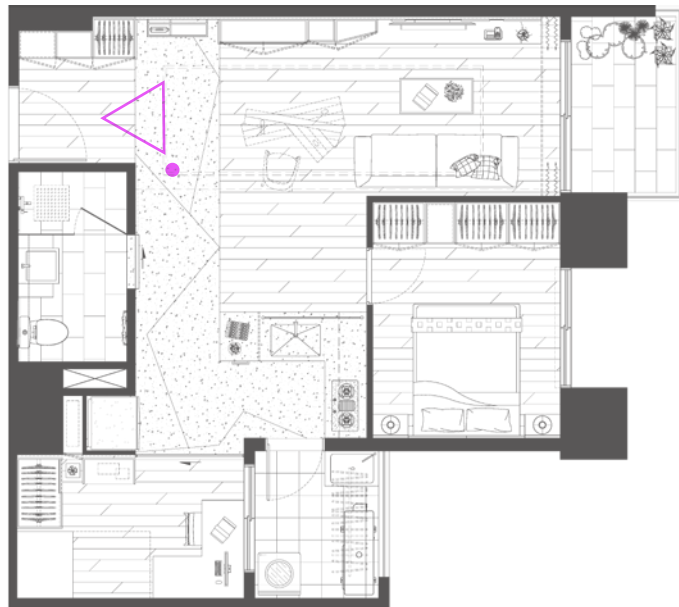


ELEVATION

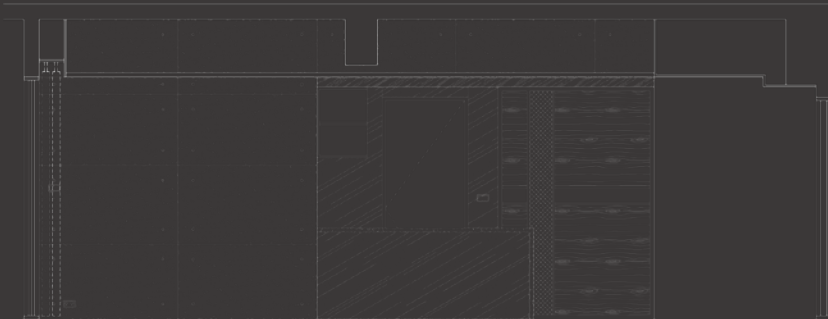


餐廚空間的天花板延伸則以實木皮為主，細緻的展延至沙發背牆及書房拉門，在多重面向的堆疊下，回歸材質最原始的力道。

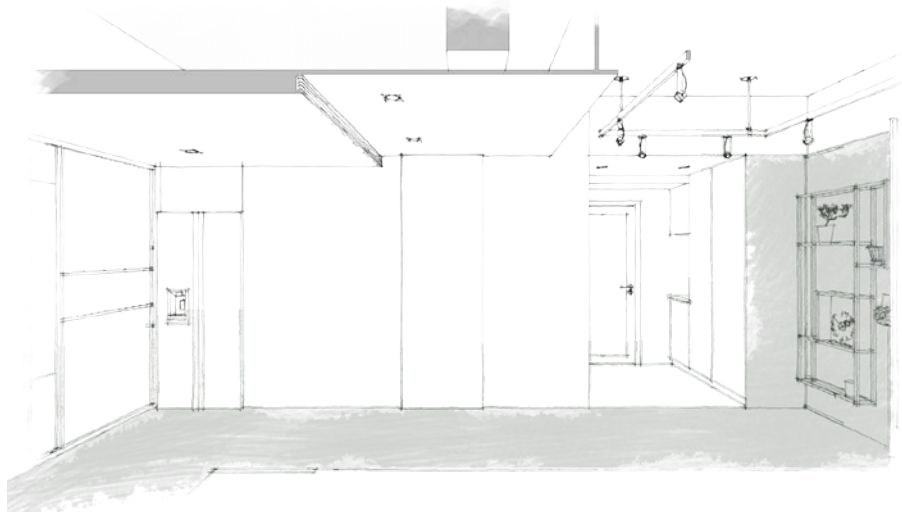
The ceiling of the kitchen space is mainly made of veneer, which is carefully extended to the sofa back wall and the study sliding door. Under the multi-faceted stack, the material is the most original.



PLAN

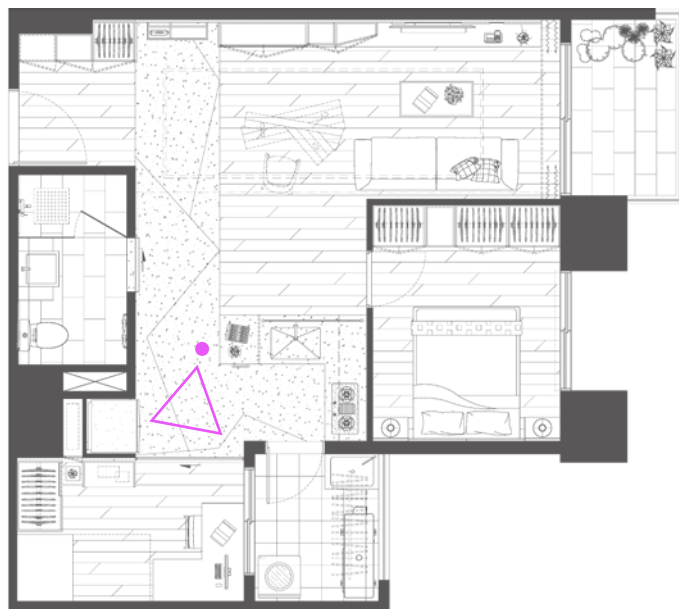


ELEVATION



端景牆面是由機能動線上所延伸為一整體造型。懸浮展示架擺脫鐵件沉重的語彙，整合家電及陳列展示的功能讓該處成為空間上的焦點。

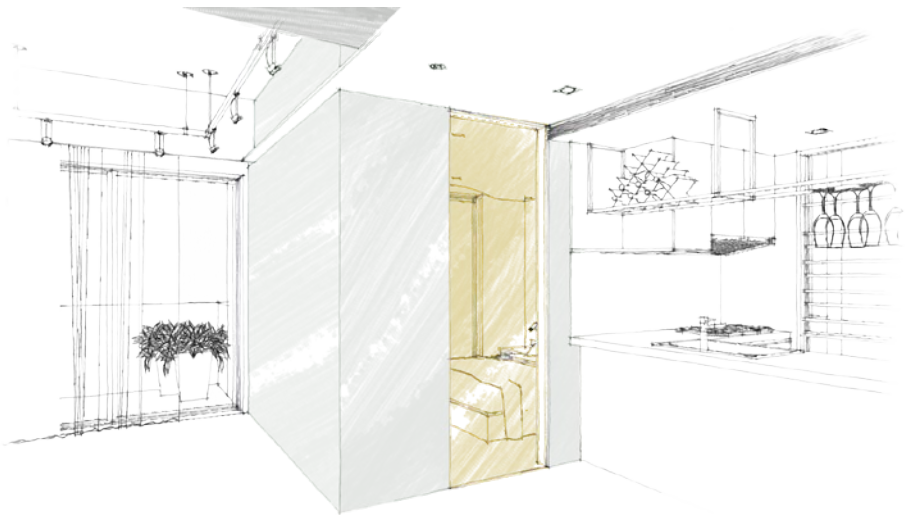
The end wall is extended by the functional line into a whole shape. The suspended display stand gets rid of the heavy vocabulary of iron pieces, and the integration of home appliances and display features makes the place a focal point in space.



PLAN

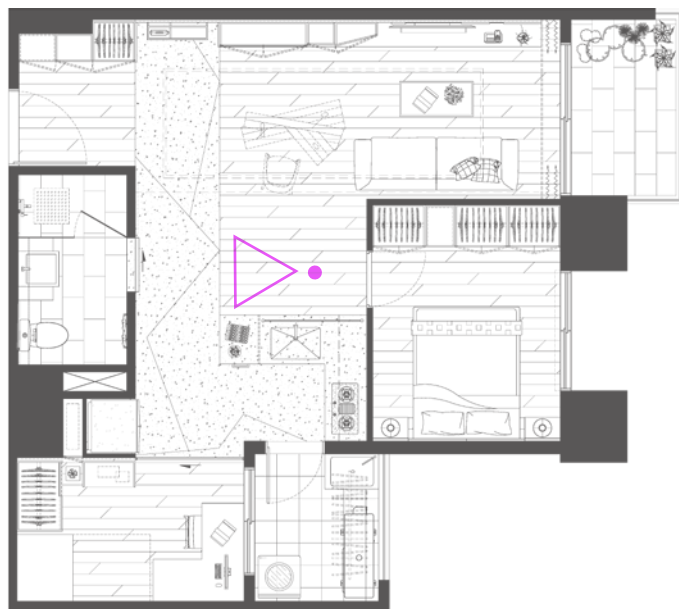


ELEVATION

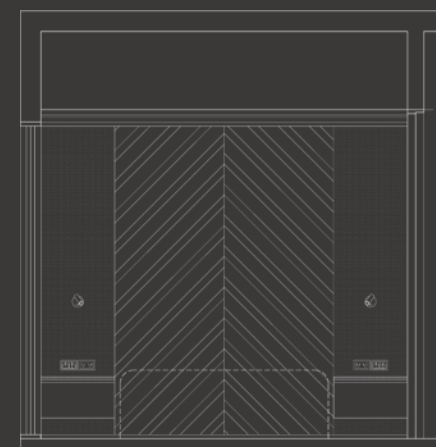


主臥室則以隱藏門的手法使其別有洞天。

The main bedroom has a hidden door that makes it another world.



PLAN



ELEVATION