



華人生創獎

TAIWAN GOOD DESIGN AWARD

回然

Reactivate Zone

作品資訊

Work information

項目地點：台灣中部

項目類型：工作空間類

項目規模：119平方米

空間格局：辦公室、會客區、茶水間、會議室、儲藏室

主要建材：砂岩漆、壁紙、雅士白大理石、不鏽鋼、
長虹玻璃、甲板、角料、水泥粉光

Site location: Central Taiwan

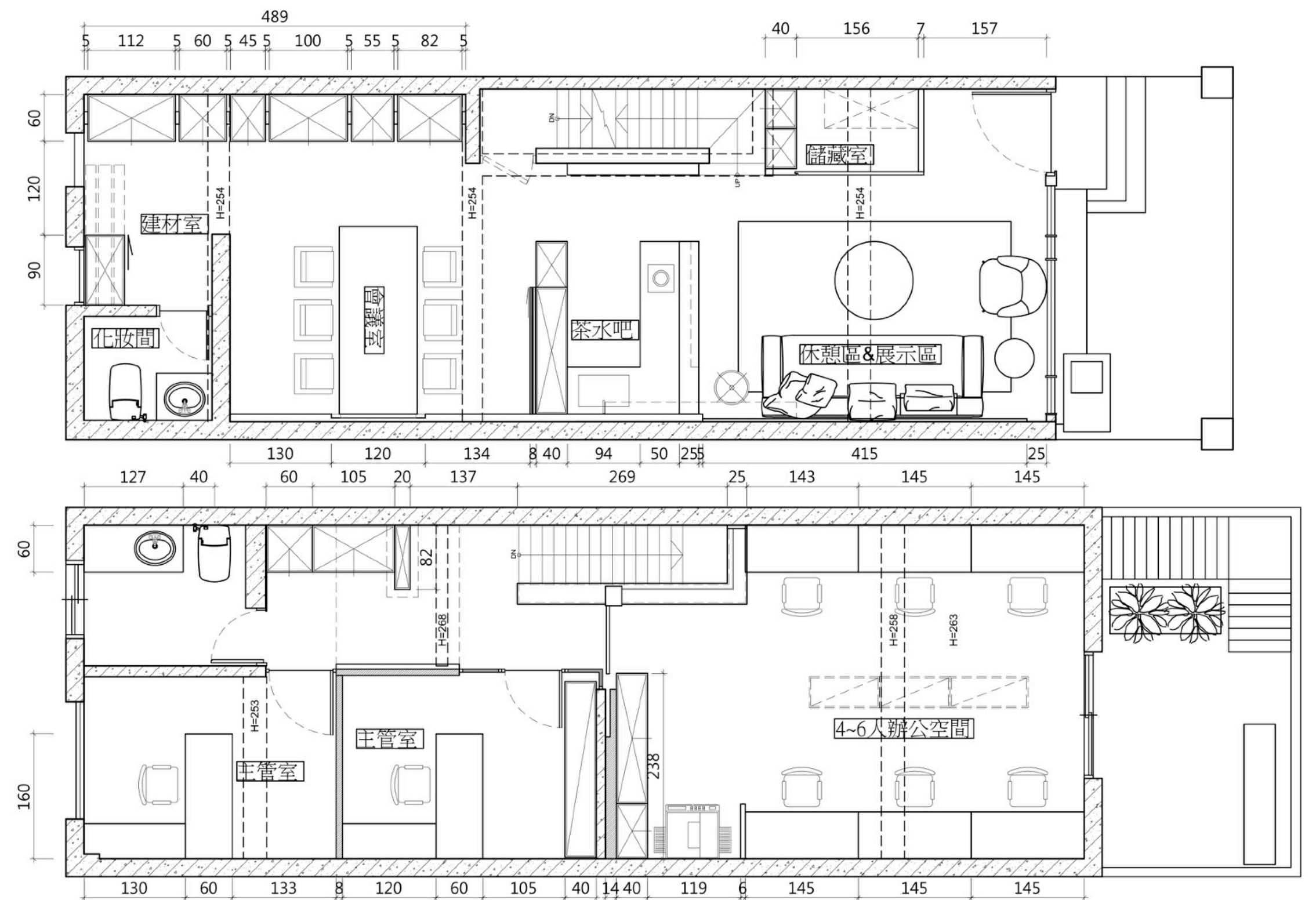
Type of construction: working space

Construction of size: 148 square meters

Spatial pattern: Office, Reception Area,

Pantry room, meeting room, Storage room,

Main building materials: Sandstone paint, wall panel,
soft Ariston marble, stainless steel material, Super Clear
Pattern Glass, plywood and cement powder.





項目定位

Design Proposition

本案為40年的老屋，欲重劃為全新的辦公場所，業主特別希望保留建物原初的本質，因此我們在空間中不做過多的裝修，僅以單純的材料運用和配置，延續並重塑老宅的面貌與表情。

「環保」亦是我們在本案中之一大訴求，不論是地坪或牆面，皆採環保無毒的安全質材，呼應設計的本然初衷，同時給予使用者一個安心的場所。

This is a 40-year-old house, which is intended to transform into a brand-new office. The owner especially want to retain the original essence of the building, thereupon does not do superfluous adornment, merely make use of materials and well spatial configuration, expect to re-molding the features and the durative of the historical house.

"Environmental protection" is one of the major appeal, whether floor or the metope, all adopt environmentally friendly and non-toxic safety materials, which echoes the original intention of the design, and at the same time renders the customer a reassured place.



風格情境

Creativity & Aesthetics

在決定保留空間的原始樣貌後，我們將建築外觀及室內空間皆刷白，於純白基質下賦予場域更多的彈性想像；摒除過多繁複的線條及色彩，保留最初的紅磚、石牆及木作，回歸空間的使用本質和純然模樣，視覺上亦更顯開闊、和諧；通過材質、光影的交織變化，呈現更加豐富的情感對話與優美質韻。

After decided to preserve the original style of the interspace, and then whitewash the exterior appearance and interior area of the building. Beneath the pure white status, endow much more manipulate imagination to the field. Cast aside too many complicated lines and tints, keep hold of the original red bricks, stone walls and wood works, returning to the essence of space and natural appearance, thus enlarge harmonious vision; as a result of the interweaving changes of material and light, evince plentiful emotional dialogue and graceful temperament.



空間配置

Space planning

本案設計中的一大困難點在於「新舊整合」，舊的空間線段紊亂不一，有些牆面線段做至2米4，有些則為2米5、2米7，因此我們必須將他們抓在同一個基準點上，讓視覺整齊劃一，管線配置上也更為便利。我們打破原有的隔牆，透過通透的玻璃及鏡面材質，以及深淺色階的礦石廊道，劃分環境性質，同時達到視野放大與空間延伸之效用。

How to integrate the old construction with new design is a primary challenge of this project. The compartments in the former space are disorganized. Some metope segment is 2.4 meters, some are 2.5 meters and 2.7 meters, and therefore we have to set up a benchmark. Not only obtain tidy vision, but also be more convenient for the pipeline configuration. Thus we dismantled the original compartments of the building, adopt transparent glass and mirror plane, as well as various shades ore corridors, to mark out the environmental properties, while achieving the utility of visual enlargement and spatial extension.



選材效用

Materials & Cost
Effectiveness

空間整體以「環保」及「耐用」作為選材依據，玄關地坪採回收製成的礦石材料鋪陳，具防水、耐刮、收縮率低之特性。會客區的壁紙以環保油墨輸出，各區牆面亦選用除甲醛塗料，力求為業主打造安全無毒的辦公空間。

其中，一處呼應本案舊屋新生的亮點，即通往二樓的斑駁視感壁面，為天然石粒所組成的砂岩漆；其手感創造出的特殊紋路，呈現工藝質感，同時兼具優良耐候性與不易褪色和耐沾污效果，讓業主在清潔保養上都更為輕鬆簡便。

The whole space takes "environmental protection" and "durability" as the basis for the selection of materials. Pave the porch floor with recycled ore material, which has waterproof, scratch-resistant and low shrinkage rate features. The Wallpaper of the reception area is outputted with environmental protection ink, and the metope of each area is also selected the dislodge formaldehyde coating to create a safe and non-toxic office space for the customer.

Among them, the mottled visual wall leading to the second floor is a highlight of this "old building new life" project. Sandstone paint composed of natural stone grains, the special textures created by hands display delicate craft, while having both excellent weather resistance, non-fading and stain-resistant effects, so that for customer will be more cushy and handy in cleaning and maintenance.

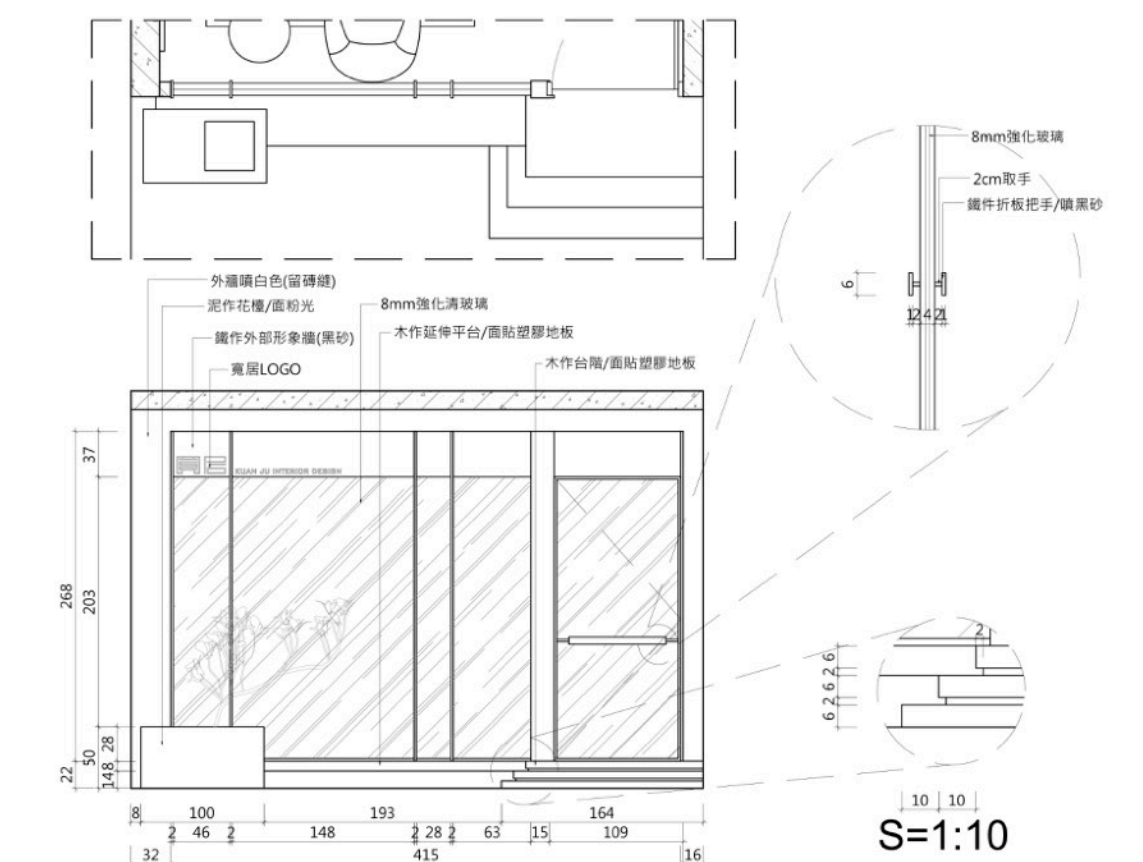
玄關地坪

Porch / Flooring



我們希望作為空間門面的玄關，呈現給來客不一樣的感覺，因此通過材質與色調的變化創造鮮明印象。入口處利用深淺不同的地坪（分色及卡扣方式）揭示場域劃分，有別於一般採橫向的行進方式，我們將線段垂直拉伸至樓面盡頭，達到視覺延伸的效果，並與落地窗的線條相互呼應。地坪材質是以石料磨粉製成的礦石材料，具防水、耐刮、收縮率低等特性，且十分環保。

As the facade of space, the porch creates a distinct image through the variation of tinges, and presents an unconventional impression to the guests. The entrance adopted posterization and buckled technique, paved the floor in different shade tone that revealed the partition of the area. Different from the common horizontal extension, we vertical stretching the segment of lines to the end of the floor to achieve the visual extension effect, and echoed with the line of the French window. The material of the floor is an ore material made of stone grinding powder, which has the advantages of waterproof, scratch resistance, low shrinking rate and environment friendly.



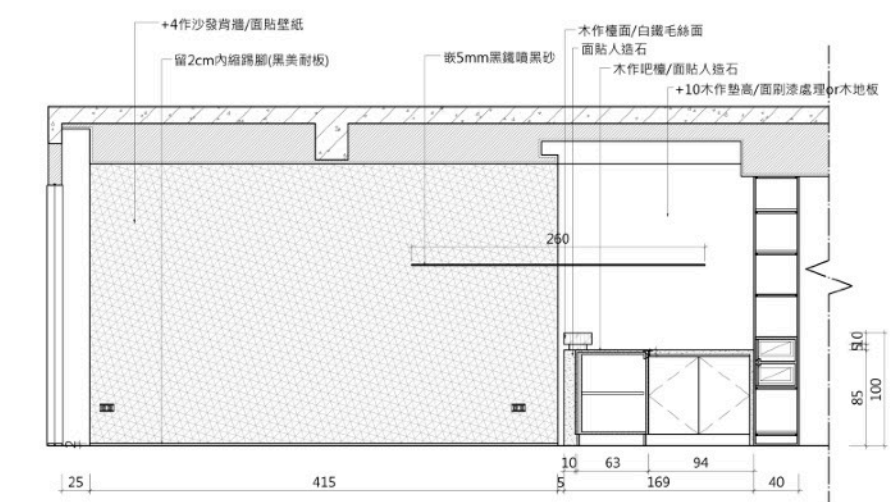
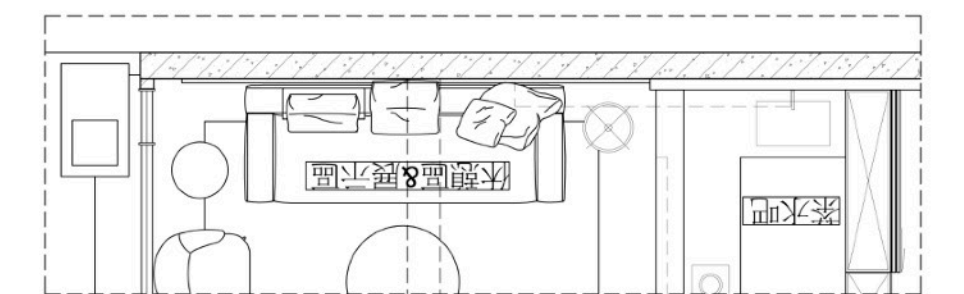
會客區

Reception Area



進門後映入眼簾的大面電視牆，除了可看見線條刻畫的痕跡呼應空間基調，亦因其附加的儲藏功能為場域增加坪效。另在入口處設立大片鏡面，方便業主及賓客整理儀容，同時創造通透及放大的視覺效果。而為讓會客區擁有住家廳室般的舒適氛圍，我們利用軟件家飾的配置，營造放鬆感受。整面大圖輸出的壁紙，以清水模色階搭配整體氛圍，沈靜色調下使人心緒獲得舒緩；並通過梅花鹿的圖形象徵，注入自然意象與祝福意涵。

The large-scale TV wall come into view after entering the door, in addition to seeing the traces depicted by lines that echoing the spatial base mode, moreover enhances the field efficiency due to its additional storage function. A large mirror is set up at the entrance to create a pass through and broaden visual effect. In order to make the reception area has a comfy atmosphere as in the living room at home; make use of the configuration of software furniture to create a relaxing feeling. The large image output wallpaper of Exposed Concrete, the placid tone matches with the overall atmosphere, so that brings people soothed mood. By the graphic symbol of Formosan Sika deer, imbue the natural image and the meaning of blessing.



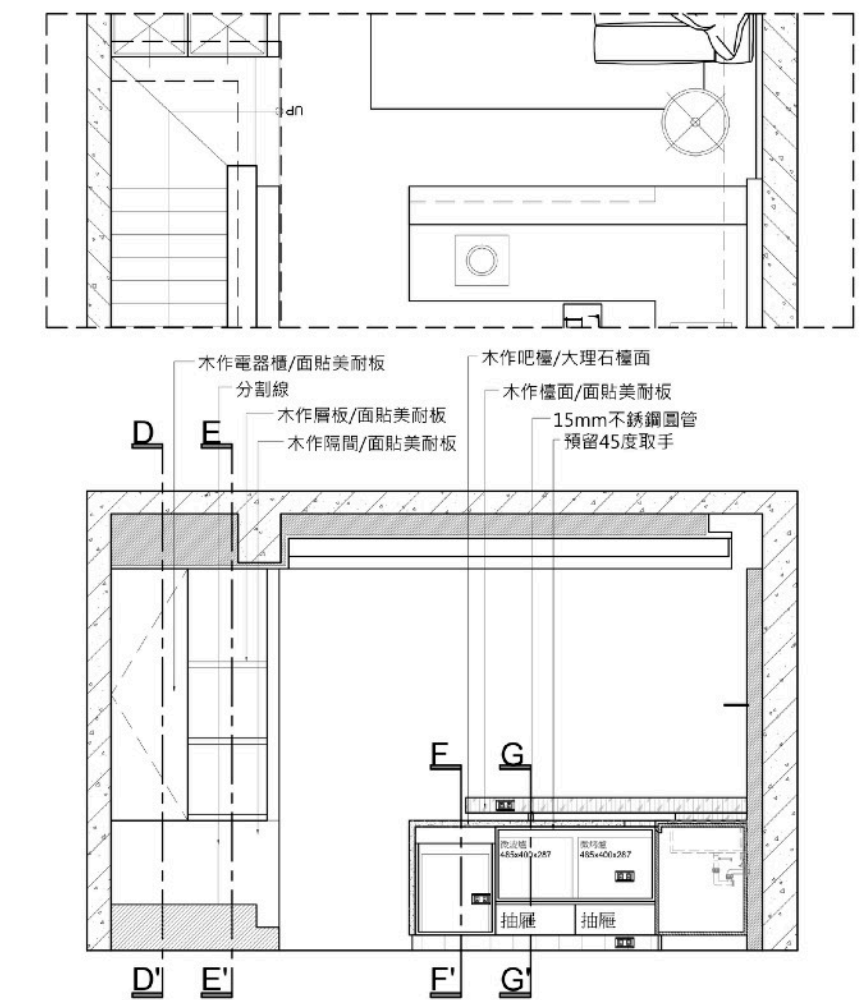
中島吧檯及會議室

Island Bar & Conference Room



以中島吧檯作為場域的分界，前為會客區、後為會議室，方便遞送茶水招待來客，並讓兩者不同功能性質的空間得以同時運作。吧台桌面使用質樸柔和的雅士白大理石，其耐磨性強、不易粘微塵，在維護保養上亦較為簡便。門體特別選用長虹玻璃，希望通過規律的紋路，讓物與景間產生輕盈、流動的折射效果；在視覺上也會相對拉高層次，使之看來更加寬敞通透。

The Island bar is as the separation zone of the site, ahead is the reception area and at the rear is the conference room, which enables the space of different functions to operate simultaneously. The desktop of the bar mounted with rustic and soft Ariston marble, which has good wear resistance, not easy to stick dust, easy to maintenance. It is hoped that via the organized texture of Super Clear Pattern Glass, the nimble and flowing refraction effect can be produced between the objects and scenes, and the whole area seems more spacious and transparent.



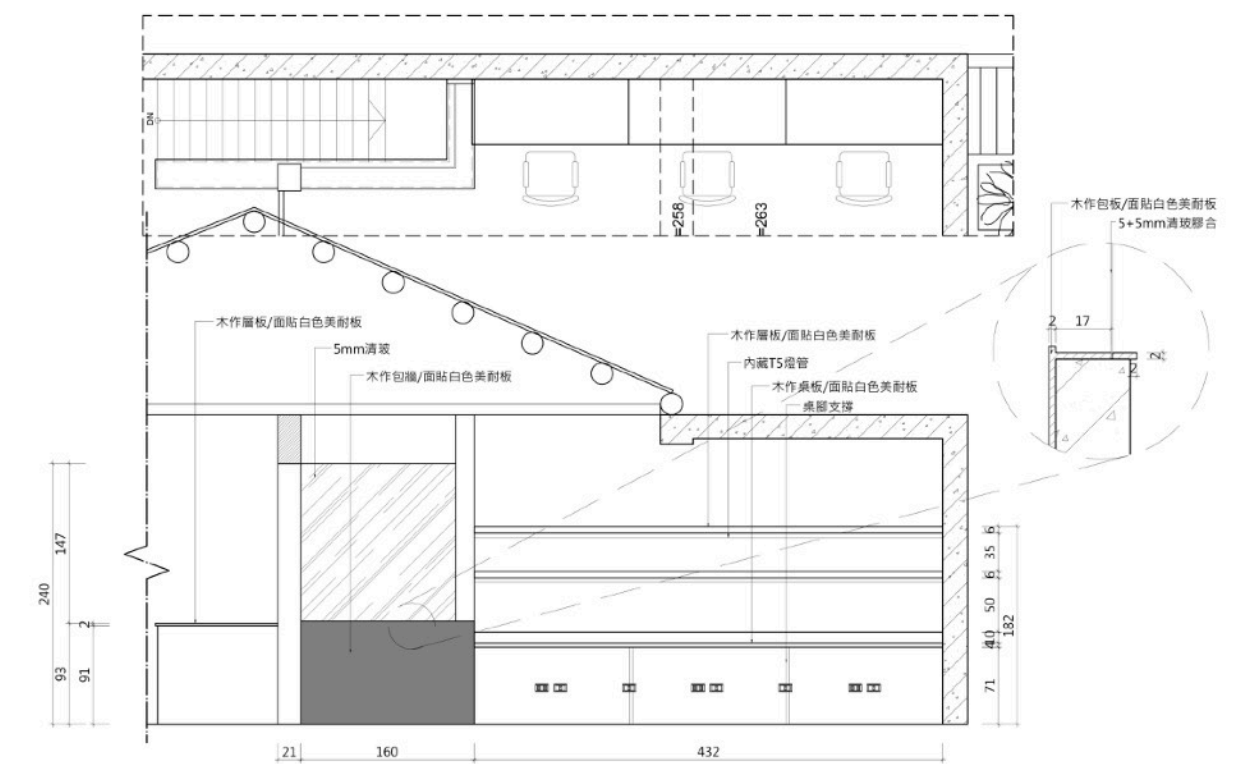
樓梯及辦公空間

Staircase & office space



牆面延續40年老屋的原始樣貌，請師傅以沙岩漆塗繪出手感紋路，增添時光背景的韻味及空間中的趣味性。我們亦拆除原先屋主多加的裝潢，僅透過單純的材料本質，如甲板、角料、水泥粉光等，建構二樓的辦公空間；並因應建物原有的斜屋頂條件，保留紅磚的透氣孔，讓空氣對流順暢，達至冬暖夏涼的舒適感受。

The walls lasted the original appearance of the 40-year-old house. Requested the master to lacquer with stone paint thus present a hand drawn texture, yet illustrated the charm of time. Removed the redundant decoration and construct the office space on the second floor with natural materials such like plywood and cement powder. In accordance with the original inclined roof of the building, retained the air permeability holes of red bricks, so that the air convection is smooth and bring about a comfy sensation of warm in the winter and cool in the summer.





華人金創獎

TAIWAN GOOD DESIGN AWARD

Thank You